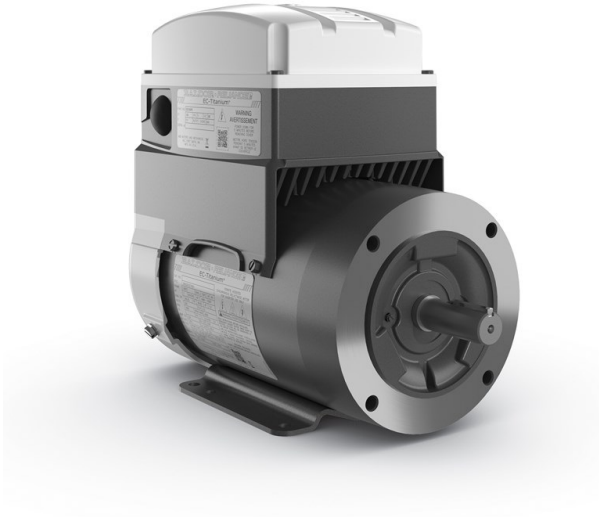


www.pfcstore.com - 763-425-7890 / 800-328-2350



BALDOR EC TITANIUM INTEGRATED MOTOR WITH VFD, 10HP, 460V, C-FACE, FOOTED

10HP | TEFC-Integrated VFD |
1800RPM to 4000 RPM | 3phase,
460 Volts | 215TC Frame | Footed
Motor

ECMTools Mobile App is an intuitive and easy-to-use Smartphone App designed to work exclusively with the ABB EC Titanium™ product range and provides wireless configuration and monitoring for the motor mounted drive. Wireless operation is carried out via Bluetooth BLE low energy interface and is available for the EC Titanium Bluetooth enabled drive or when the COPYSTICK2 is plugged into a drive or a drive network.



SKU: ECS100T4H10FB4

Stock: Out of stock contact us for
lead time

www.pfcstore.com - 763-425-7890 / 800-328-2350

Categories: [Baldor Motors](#)
Tags: [Baldor Motors](#)
Part Number ECS100T4H10FB4

PRODUCT DESCRIPTION

- Permanent Magnet PWM AC Drive Control
 - IP54 Gasket Plastic Cover Enclosure
 - Built-in ABB Ability and Bluetooth communications
 - Serial Modbus RJ45 Interface
 - 2 Digital Inputs, 2 Configurable Inputs (Analog or Digital)
 - 1 Relay Output
 - IE5+ Motor Efficiency
 - Class F Insulation with Class B Motor temperature
- Internal grounding brush for bearing current mitigation
- Motor rated for inverter use per NEMA MG1 Part 31.4.4.2

Estimated delivery is 1 to 2 weeks

[Motor Specs](#)
[Quick Start](#)
[Manual](#)

ADDITIONAL INFORMATION

| | |
|-------------------|-----------------|
| Weight | 150 lbs |
| Dimensions | 30 × 16 × 16 in |

www.pfcestore.com - 763-425-7890 / 800-328-2350

| | |
|-------------|-----------------------------|
| Frame | <u>215JM</u> |
| Horse Power | <u>10</u> |
| Motor Type | <u>TEFC-INTERGRATED VFD</u> |
| Phase | <u>3</u> |
| RPM | <u>1800, 3600</u> |
| Voltage | <u>460</u> |