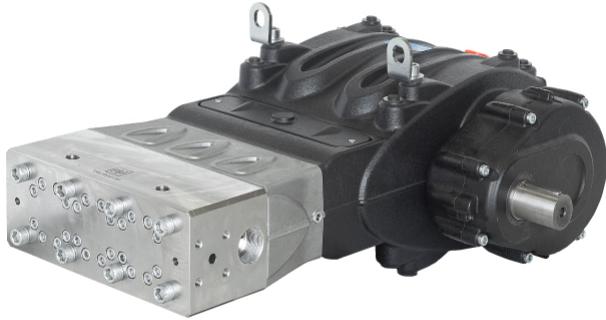


www.pfcstore.com - 763-425-7890 / 800-328-2350



## GENERAL PUMP SM1418R1 - 7 GPM AT 21750 PSI - 420 STAINLESS MANIFOLD

**Contact us for pricing**

7 GPM @ 21750 PSI | 1800 RPM |  
420 STAINLESS | INLET 1.5" G,  
OUTLET 3/4" HP SPECIAL

MAX INLET PRESSURE 100 PSI |  
MIN INLET PSI 75 PSI

MAX FLUID TEMP 85°F



---

**SKU:** SM1418R1

**Stock:** Out of stock contact us for  
lead time

**Categories:** [General Pump](#)

**Part Number** SM1418R1

## PRODUCT DESCRIPTION

### General Pump SM Series

#### FEATURES

[www.pfcstore.com](http://www.pfcstore.com) - 763-425-7890 / 800-328-2350

- Triplex Plunger Pump, available in 6 flows
    - Double pressure packings
  - Pressure packing integrated cooling system
    - Horizontally fitted in-line valves
    - Splash lubrication
  - Gear ratios: 1500 RPM=1.875:1, 1800 RPM=2.238:1, 2200=2.722:1, 2600=3.25:1
- Solid shaft only for belt-driven applications

### **MATERIALS**

- High resistance stainless steel manifold
  - Solid ceramic plungers
  - Forged steel connecting rods
  - Stainless steel valves
- Tempered steel alloy crankshaft
  - Cast iron crankcase
  - Double rim roller bearings
  - Proprietary seal technology

### **Estimated Delivery 1 to 2 weeks**

[SM Specs](#)

[SM Manual](#)

[SM Repair](#)

### **ADDITIONAL INFORMATION**

<b>Weight</b>	600 lbs
<b>Dimensions</b>	42 × 30 × 20 in
<b>GPM/PSI</b>	<a href="#"><u>7 GPM @ 21750 PSI</u></a>
<b>Wetted Material</b>	<a href="#"><u>420 SS MANIFOLD</u></a>

**www.pfcestore.com - 763-425-7890 / 800-328-2350**