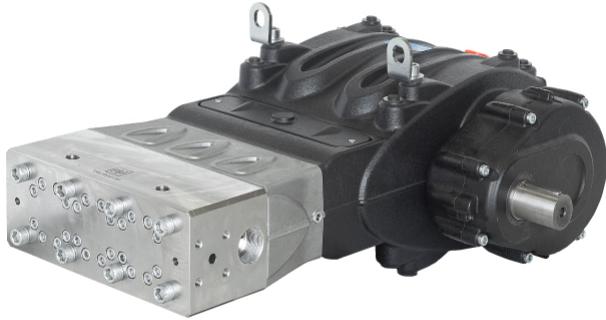


www.pfcestore.com - 763-425-7890 / 800-328-2350



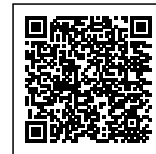
GENERAL PUMP SM1818R1 - 11.4 GPM AT 13050 PSI - 420 STAINLESS MANIFOLD

Contact us for pricing

11.4 GPM @ 13050 PSI | 1800 RPM
| 420 STAINLESS | INLET 1.5" G,
OUTLET 3/4" HP SPECIAL

MAX INLET PRESSURE 100 PSI |
MIN INLET PSI 75 PSI

MAX FLUID TEMP 85°F



SKU: SM1818R1

Stock: Out of stock contact us for
lead time

Categories: [General Pump](#)

Part Number SM1818R1

PRODUCT DESCRIPTION

General Pump SM Series

FEATURES

www.pfcstore.com - 763-425-7890 / 800-328-2350

- Triplex Plunger Pump, available in 6 flows
 - Double pressure packings
 - Pressure packing integrated cooling system
 - Horizontally fitted in-line valves
 - Splash lubrication
 - Gear ratios: 1500 RPM=1.875:1, 1800 RPM=2.238:1, 2200=2.722:1, 2600=3.25:1
- Solid shaft only for belt-driven applications

MATERIALS

- High resistance stainless steel manifold
 - Solid ceramic plungers
 - Forged steel connecting rods
 - Stainless steel valves
- Tempered steel alloy crankshaft
 - Cast iron crankcase
 - Double rim roller bearings
 - Proprietary seal technology

Estimated Delivery 1 to 2 weeks

[SM Specs](#)

[SM Manual](#)

[SM Repair](#)

ADDITIONAL INFORMATION

Weight	600 lbs
Dimensions	42 × 30 × 20 in
GPM/PSI	<u>11.4 GPM @ 13050 PSI</u>
Wetted Material	<u>420 SS MANIFOLD</u>

www.pfcestore.com - 763-425-7890 / 800-328-2350