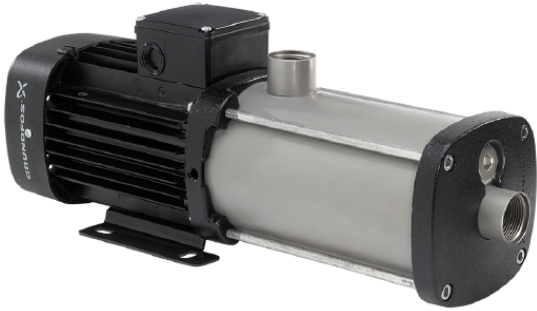


www.pfcestore.com - 763-425-7890 / 800-328-2350



GRUNDFOS CM 1-2 PUMP 304SS, EPDM SEAL, SINGLE PHASE

BEP 9 GPM @ 57 FTH | Connections
1" NPT | Horse Power .805 | 1
Phase | Volts 115-230 | Wetted
Material 304SS-EPDM



SKU: 97568196

Stock: Out of stock contact us for
lead time

Categories: [Grundfos CM Pumps](#)

Model Number 97568196

Part Number CM 1-2 A-S-I-E-
AQQE B-A-A-N

PRODUCT DESCRIPTION

Grundfos CM pump has been created with compactness, flexibility and reliability as its central features. This horizontal multistage close-coupled pump is a compact, reliable and quiet pump designed to work in a variety of applications.

The difference between the CM and the CME pump ranges is the motor. CM pumps are fitted with mains-operated motors, whereas the motors for CME

www.pfcstore.com - 763-425-7890 / 800-328-2350

pumps have an integrated frequency converter and PID controller.

A Grundfos engineered mechanical shaft seal has been designed to eliminate industry-wide problems with shaft seals sticking where SIC-SIC seal faces are used. The solution builds on both the implementation of a rotation stop on the stationary ring and different surface finishing on both the stationary and rotating rings.

The CM and CME pumps are available in cast iron or stainless steel

- AISI 304/DIN 1.4301 stainless steel for water and non-corrosive liquids
- AISI 316/DIN 1.4401 stainless steel offers

Product photo could vary from the actual product

Estimated delivery is 3 to 4 weeks

[Curves & Specs](#)

[Manual](#)

ADDITIONAL INFORMATION

Weight	40 lbs
Dimensions	26 × 20 × 20 in
Best Efficiency Point	9 GPM @ 57 FTH
Horse Power	.805
Phase	1
Voltage	115-230
Wetted Material	CAST IRON-304SS-EPDM