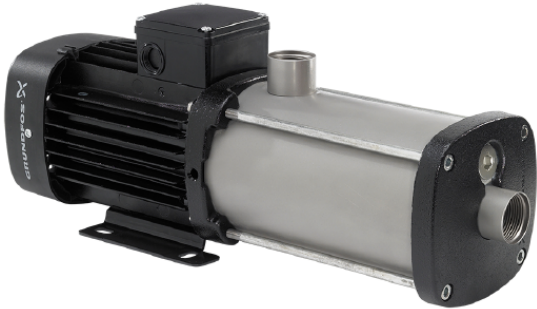


www.pfcestore.com - 763-425-7890 / 800-328-2350



## GRUNDFOS CM 1-2 PUMP 304SS, EPDM SEAL, SINGLE PHASE

BEP 9 GPM @ 57 FTH | Connections  
1" NPT | Horse Power .805 | 1  
Phase | Volts 115-230 | Wetted  
Material 304SS-EPDM



---

**SKU:** 97568196

**Stock:** Out of stock contact us for  
lead time

**Categories:** [Grundfos CM Pumps](#)

**Model Number** 97568196

**Part Number** CM 1-2 A-S-I-E-  
AQQE B-A-A-N

## PRODUCT DESCRIPTION

Grundfos CM pump has been created with compactness, flexibility and reliability as its central features. This horizontal multistage close-coupled pump is a compact, reliable and quiet pump designed to work in a variety of applications.

The difference between the CM and the CME pump ranges is the motor. CM pumps are fitted with mains-operated motors, whereas the motors for CME

[www.pfcstore.com](http://www.pfcstore.com) - 763-425-7890 / 800-328-2350

pumps have an integrated frequency converter and PID controller.

A Grundfos engineered mechanical shaft seal has been designed to eliminate industry-wide problems with shaft seals sticking where SIC-SIC seal faces are used. The solution builds on both the implementation of a rotation stop on the stationary ring and different surface finishing on both the stationary and rotating rings.

The CM and CME pumps are available in cast iron or stainless steel

- AISI 304/DIN 1.4301 stainless steel for water and non-corrosive liquids
- AISI 316/DIN 1.4401 stainless steel offers

Product photo could vary from the actual product

**Estimated delivery is 3 to 4 weeks**

[Curves & Specs](#)

[Manual](#)

## ADDITIONAL INFORMATION

<b>Weight</b>	40 lbs
<b>Dimensions</b>	26 × 20 × 20 in
<b>Best Efficiency Point</b>	<a href="#"><u>9 GPM @ 57 FTH</u></a>
<b>Horse Power</b>	<a href="#"><u>.805</u></a>
<b>Phase</b>	<a href="#"><u>1</u></a>
<b>Voltage</b>	<a href="#"><u>115-230</u></a>
<b>Wetted Material</b>	<a href="#"><u>CAST IRON-304SS-EPDM</u></a>