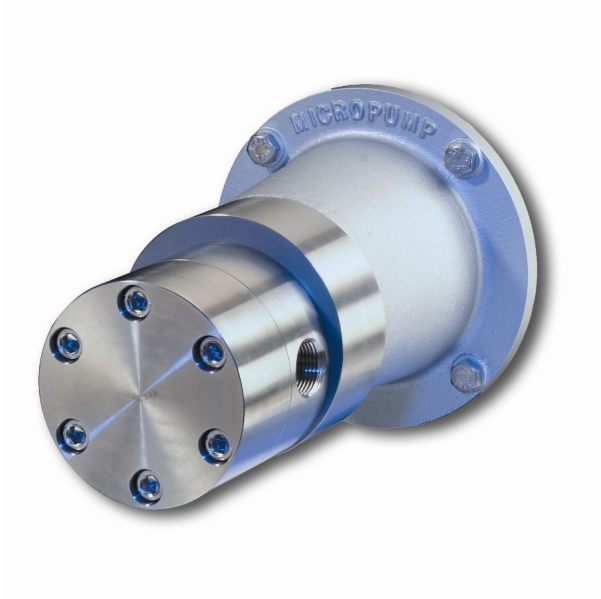
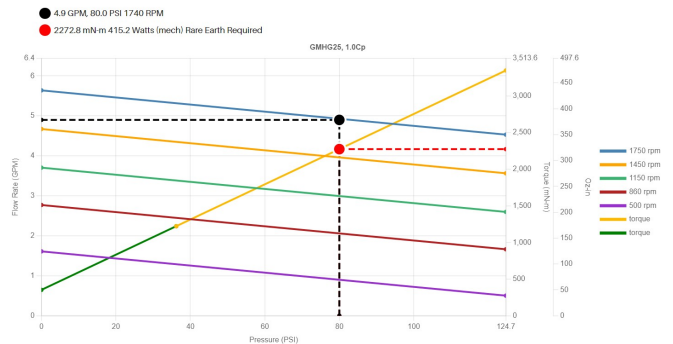


www.pfcstore.com - 763-425-7890 / 800-328-2350

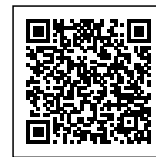


## MICROPUMP GMHG25 GEAR PUMP WITHOUT HUB

4.80 GPM @ 80 PSI, based on 1cp at 1750RPM. Material 316SS, Gear set PEEK (Carbon fiber/ptfe), Static Seal Viton. Temp range -50°F/250°F. Driven Magnet SmCo. E mount 56c. Max System Pressure 1500PSI. Connections 3/4 FNPT



The data presented here are estimated based on combined historical data and calculations of physical science. Actual performance will vary. This information constitutes the proprietary/confidential information of Micropump and may not be distributed without permission. GMHG25, 7/31/2024, Copyright 2022, Micropump, Inc.



**SKU:** 86903

**Stock:** Out of stock contact us for lead time

**Categories:** [Micropumps](#)

**Model Number** GMH-G25JVS10.E-

## PRODUCT DESCRIPTION

### GMHG25

Product Type: Cavity Technology

The GMH Series pumps can handle tough fluid handling needs without taking up too much space. These cavity style gear pumps provides smooth, pulseless delivery and can withstand system pressures to 103 Bar (1500 psi). Designed using higher displacement gears, these pumps are configured to provide optimum flow with 4-pole motor speeds not exceeding 1750rpm. These designs allow for large plant systems to use common motors across a wide range of products.

GMH Series pumps deliver rugged, reliable performance for any high-precision pumping need.

**If not in stock usual lead time is 5 to 6 weeks**

[Spec & Curves](#)

[Datasheet](#)

## ADDITIONAL INFORMATION

<b>Weight</b>	24 lbs
<b>Dimensions</b>	12 × 12 × 12 in
<b>Max GPH</b>	<a href="#"><u>288</u></a>
<b>Max PSI</b>	<a href="#"><u>80</u></a>

**[www.pfcestore.com](http://www.pfcestore.com) - 763-425-7890 / 800-328-2350**