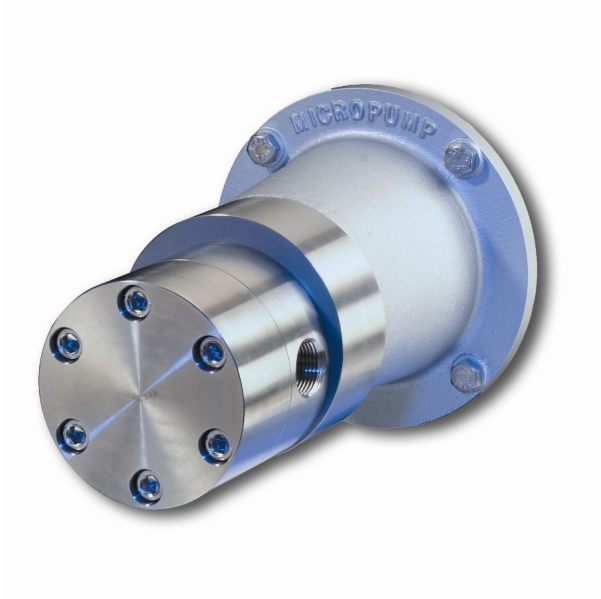


www.pfcstore.com - 763-425-7890 / 800-328-2350



## MICROPUMP GNHG35 GEAR PUMP WITHOUT HUB

10.50 GPM @ 60 PSI, based on 1cp  
at 1750RPM. Material 316SS, Gear  
set PEEK (Carbon fiber/ptfe), Static  
Seal Viton. Temp range  
-50°F/250°F. Driven Magnet SmCo.  
E mount 56c adaptor included.  
Max System Pressure 1500PSI.  
Connections 3/4 FNPT



---

**SKU:** 86935

**Stock:** Out of stock contact us for  
lead time

**Categories:** [Micropumps](#)

**Model Number** GNH-G35JVS10E  
**Part Number** 86935

## PRODUCT DESCRIPTION

[www.pfcstore.com](http://www.pfcstore.com) - 763-425-7890 / 800-328-2350

## GNHG35

Product Type: Cavity Technology

The GNH Series pumps can handle tough fluid handling needs without taking up too much space. These cavity style gear pumps provides smooth, pulseless delivery and can withstand system pressures to 103 Bar (1500 psi). Designed using higher displacement gears, these pumps are configured to provide optimum flow with 4-pole motor speeds not exceeding 1750rpm. These designs allow for large plant systems to use common motors across a wide range of products.

GNH Series pumps deliver rugged, reliable performance for any high-precision pumping need.

**If not in stock usual lead time is 5 to 6 weeks**

[Spec & Curves](#)

[Datasheet](#)

## ADDITIONAL INFORMATION

<b>Weight</b>	20 lbs
<b>Dimensions</b>	12 × 12 × 12 in
<b>Max GPH</b>	<a href="#">600</a>
<b>Max PSI</b>	<a href="#">60</a>