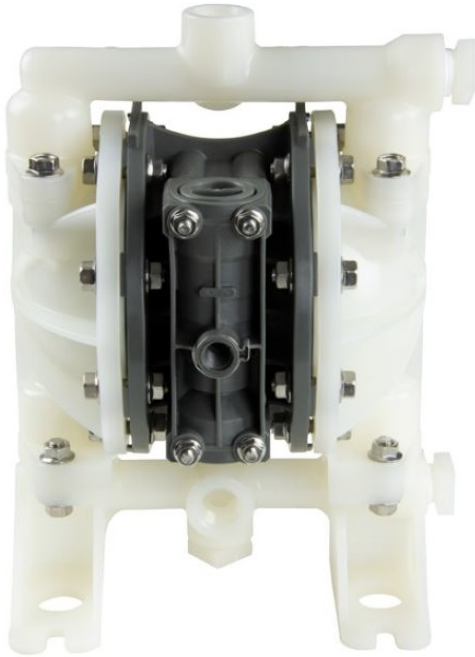


www.pfcstore.com - 763-425-7890 / 800-328-2350



YAMADA AOD PUMP GLOBAL SERIES IN KYNAR HYTREL-BUNA G15

Kynar-Hytrel-Buna

10 GPM @ 100 FTH / MAX 16.6
GPM

1/2 NPT Female

Max Temp 248°F

Maximum Dry Suction Lift: Rubber
fitted pump capability: 13.5' - PTFE
fitted pump capability: 11'

Replaces the ARO AODD Pump
660Sj



SKU: 854987

Stock: Out of stock contact us for
lead time

Categories: [AOD Pumps](#)

Tags: [Yamada Pumps](#)

Model Number 854987

Part Number G15VH11

www.pfcstore.com - 763-425-7890 / 800-328-2350

PRODUCT DESCRIPTION

Yamada AOD Pump

G15 Global Series 1/2" AODD pumps provide a maximum flow rate of 16.6 GPM and are available in Aluminum, Stainless Steel (316), Pure Polypropylene and Kynar. We offer a wide selection of diaphragm materials that cover a variety of applications.

Yamada pumps utilize a Step Spool (S-Spool).

Yamada Global Series pumps do not have an independent pilot valve system (less parts) and consume less air versus the competition. Available with multiport options, these AODD pumps perform extremely well in continuous stop/start operations and provide exceptional suction lift.

Estimated delivery 2 weeks

[Curves & Specs](#)

ADDITIONAL INFORMATION

Weight	12 lbs
Dimensions	15 × 15 × 16 in
Connections	<u>1/2"FNPT</u>
Max GPM	<u>16.6 GPM</u>
Wetted Material	<u>KYNAR-HYTREL-BUNA</u>