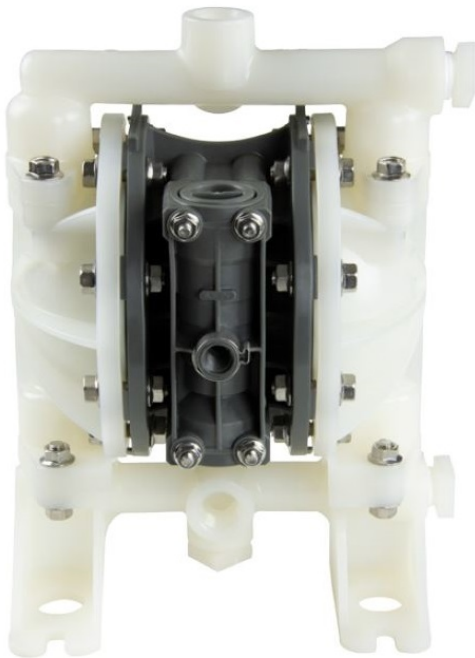


www.pfcestore.com - 763-425-7890 / 800-328-2350



## YAMADA AOD PUMP GLOBAL SERIES IN KYNAR & PTFE G15

Kynar-PTFE

10 GPM @ 125 FTH / MAX 16.6  
GPM

1/2 NPT Female

Max Temp 212°F

Maximum Dry Suction Lift: Rubber  
fitted pump capability: 13.5' - PTFE  
fitted pump capability: 11'

Replaces the ARO AODD Pump  
660Sj



---

**SKU:** 854985

**Stock:** Out of stock contact us for  
lead time

**Categories:** [AOD Pumps](#)

**Tags:** [Yamada Pumps](#)

**Model Number** 854985

**Part Number** G15VT11

www.pfcstore.com - 763-425-7890 / 800-328-2350

## PRODUCT DESCRIPTION

### Yamada AOD Pump

**G15 Global Series** 1/2" AODD pumps provide a maximum flow rate of 16.6 GPM and are available in Aluminum, Stainless Steel (316), Pure Polypropylene and Kynar. We offer a wide selection of diaphragm materials that cover a variety of applications.

### Yamada pumps utilize a Step Spool (S-Spool).

Yamada Global Series pumps do not have an independent pilot valve system (less parts) and consume less air versus the competition. Available with multiport options, these AODD pumps perform extremely well in continuous stop/start operations and provide exceptional suction lift.

### Estimated delivery 2 weeks

[Curves & Specs](#)

## ADDITIONAL INFORMATION

|                        |                                   |
|------------------------|-----------------------------------|
| <b>Weight</b>          | 12 lbs                            |
| <b>Dimensions</b>      | 15 × 15 × 16 in                   |
| <b>Connections</b>     | <a href="#"><u>1/2"FNPT</u></a>   |
| <b>Max GPM</b>         | <a href="#"><u>16.6 GPM</u></a>   |
| <b>Wetted Material</b> | <a href="#"><u>KYNAR-PTFE</u></a> |