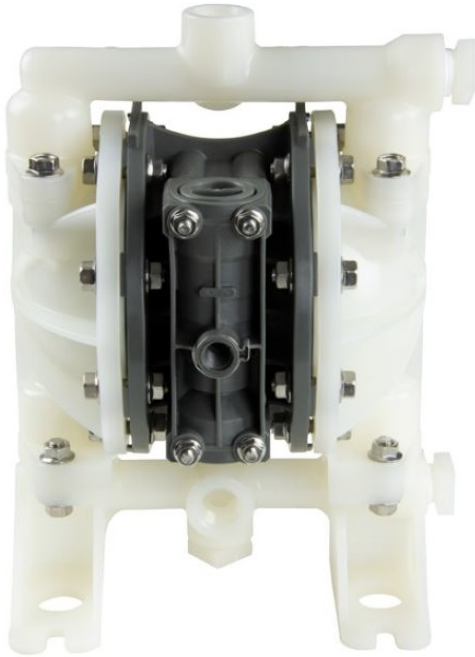


www.pfcstore.com - 763-425-7890 / 800-328-2350



YAMADA AOD PUMP GLOBAL SERIES IN KYNAR & PTFE G15

Kynar-PTFE

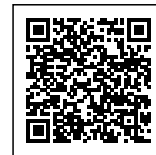
10 GPM @ 125 FTH / MAX 16.6
GPM

1/2 NPT Female

Max Temp 212°F

Maximum Dry Suction Lift: Rubber
fitted pump capability: 13.5' - PTFE
fitted pump capability: 11'

Replaces the ARO AODD Pump
660Sj



SKU: 854985

Stock: Out of stock contact us for
lead time

Categories: [AOD Pumps](#)

Tags: [Yamada Pumps](#)

Model Number 854985

Part Number G15VT11

www.pfcstore.com - 763-425-7890 / 800-328-2350

PRODUCT DESCRIPTION

Yamada AOD Pump

G15 Global Series 1/2" AODD pumps provide a maximum flow rate of 16.6 GPM and are available in Aluminum, Stainless Steel (316), Pure Polypropylene and Kynar. We offer a wide selection of diaphragm materials that cover a variety of applications.

Yamada pumps utilize a Step Spool (S-Spool).

Yamada Global Series pumps do not have an independent pilot valve system (less parts) and consume less air versus the competition. Available with multiport options, these AODD pumps perform extremely well in continuous stop/start operations and provide exceptional suction lift.

Estimated delivery 2 weeks

[Curves & Specs](#)

ADDITIONAL INFORMATION

Weight	12 lbs
Dimensions	15 × 15 × 16 in
Connections	<u>1/2"FNPT</u>
Max GPM	<u>16.6 GPM</u>
Wetted Material	<u>KYNAR-PTFE</u>