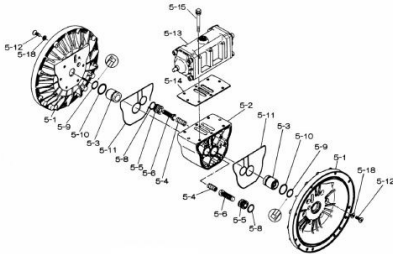
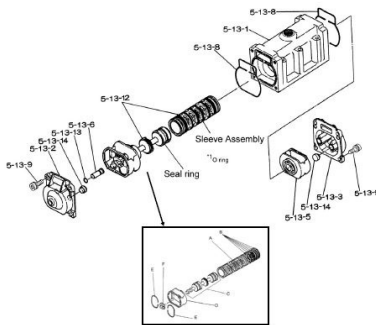


www.pfcestore.com - 763-425-7890 / 800-328-2350

■ Body Assembly



■ Valve Body Assembly



## YAMADA REPAIR KIT FOR THE NDP-20 & NDP-32 AIR MOTOR METALLIC

Fits the NDP-20 & NDP-32 Air Motor Repair Kit - Check Parts BOM (Below) for the parts content in the kit. Highlighted in Blue are parts in the pump kit. Highlighted in yellow are parts in the air motor kit



**SKU:** K225-AM

**Stock:** 9 in stock (can be backordered)

**Categories:** [Yamada Parts](#)

**Part Number** K225-AM

## PRODUCT DESCRIPTION

**If back ordered usual lead time is 1 to 2 weeks**

**Parts BOMs for the NDP-20 BA, BS, BST**

[NDP-20BA](#)

www.pfcstore.com - 763-425-7890 / 800-328-2350

[NDP-20BS](#)

[NDP-20BST](#)

**Parts BOMs for the NDP-32 ending in BAN, BAS,  
BAT**

[NDP-32BAN](#)

[NDP-32BAS](#)

[NDP-32BAT](#)

**ADDITIONAL INFORMATION**

<b>Weight</b>	8 lbs
<b>Dimensions</b>	10 × 10 × 6 in