


Position	Count	Description
	1	<p><b>CRN 1S-4 A-FGJ-A-E-HQQE</b></p>  <p>Product No.: <a href="#">96081784</a> Vertical, non-self-priming, multistage, in-line, centrifugal pump for installation in pipe systems and mounting on a foundation.</p> <p>The pump has the following characteristics:</p> <ul style="list-style-type: none"> <li>- Impellers, intermediate chambers and outer sleeve are made of</li> <li>- Pump head cover and base are made of</li> <li>- The shaft seal has assembly length according to EN 12756.</li> <li>- Power transmission is via cast iron split coupling.</li> </ul> <p>flanges/couplings.</p> <p>The motor is a 1-phase AC motor.</p> <p><b>Controls:</b> Frequency converter: NONE</p> <p><b>Liquid:</b> Pumped liquid: Water Liquid temperature range: -4 .. 248 °F Liquid temperature during operation: 68 °F Density: 62.29 lb/ft³</p> <p><b>Technical:</b> Rated flow: 4.84 US gpm Rated head: 77.76 ft Pump orientation: Vertical Shaft seal arrangement: Single Code for shaft seal: HQQE Approvals on nameplate: CURUS,NSF61 Curve tolerance: ISO9906:2012 3B</p> <p><b>Materials:</b> Base: Stainless steel EN 1.4408 AISI 316 Impeller: Stainless steel EN 1.4401 AISI 316 Bearing: SIC</p> <p><b>Installation:</b> Maximum ambient temperature: 104 °F Maximum operating pressure: 363 psi Max pressure at stated temperature: 363 psi / 250 °F 363 psi / -4 °F Type of connection: DIN / ANSI / JIS Size of inlet connection: DN 25/32 Size of suction port: 1 1/4 inch Size of outlet connection: DN 25/32 Size of outlet port: 1 1/4 inch Pressure rating for pipe connection: PN 25 Flange rating inlet: 300 lb</p>

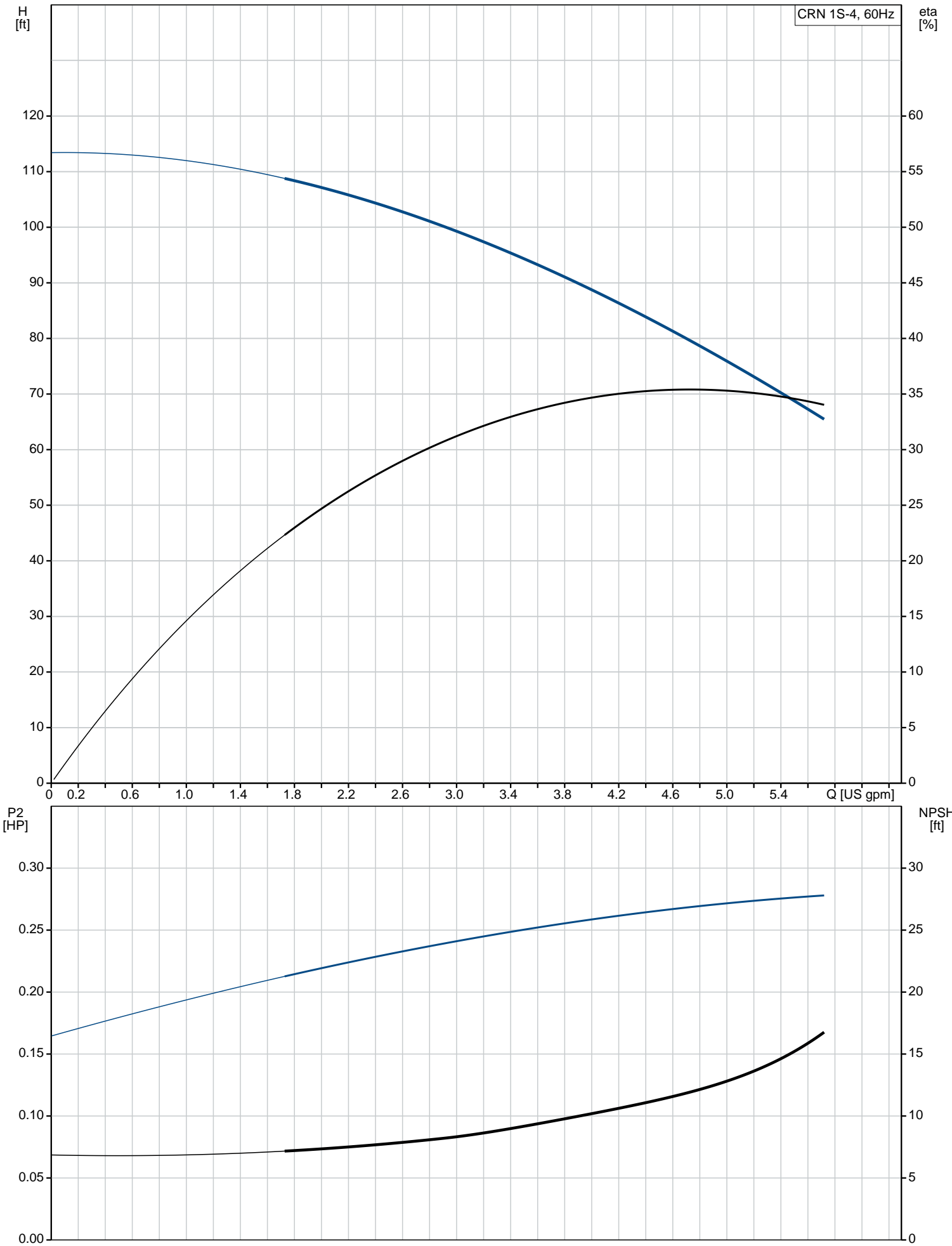


Company name:  
Created by:  
Phone:

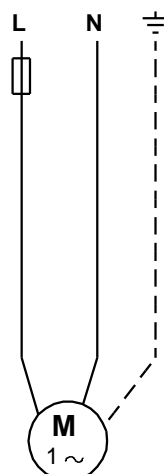
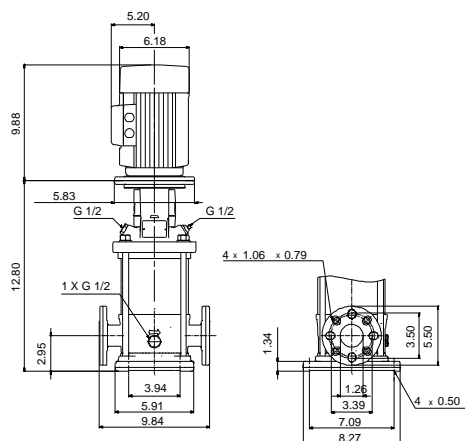
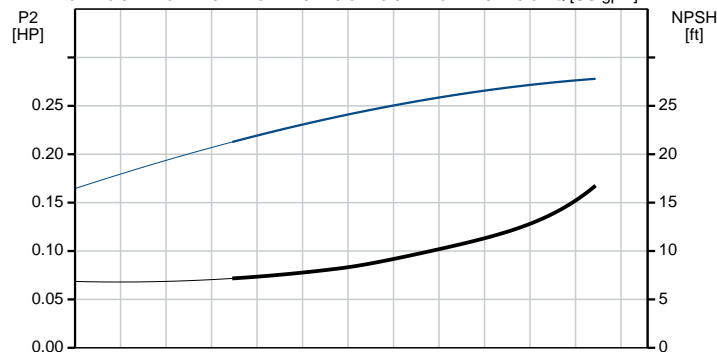
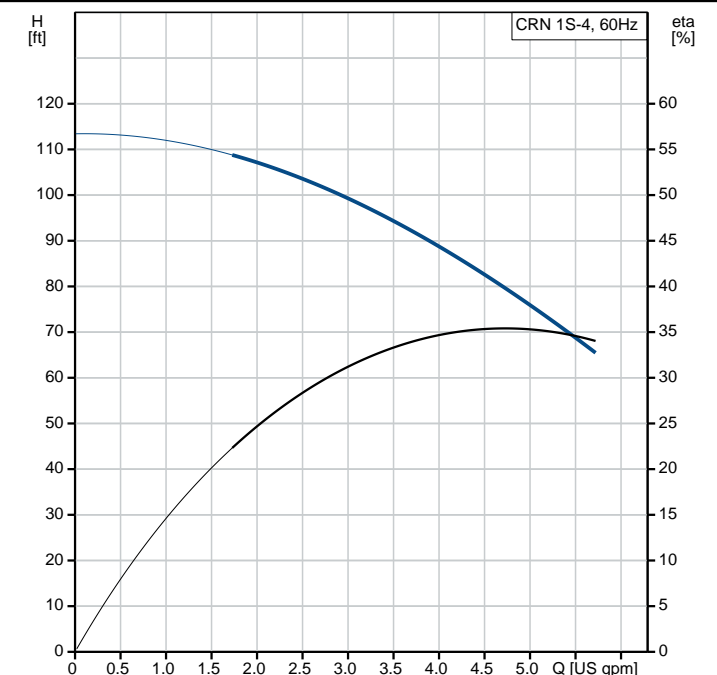
Date: 10/24/2018

Position	Count	Description
		Flange size for motor: 56C
		<b>Electrical data:</b>
		Motor standard: NEMA
		Motor type: Baldor
		Rated power - P2: 0.33 HP
		Power (P2) required by pump: 0.33 HP
		Main frequency: 60 Hz
		Rated voltage: 1 x 115/230 V
		Service factor: 1.35
		Rated current: 6.00/3.00 A
		Rated speed: 3450 rpm
		Number of poles: 2
		Insulation class (IEC 85): B
		<b>Others:</b>
		Net weight: 53.8 lb
		Gross weight: 64.8 lb
		Shipping volume: 4.94 ft³
		Country of origin: US
		Custom tariff no.: 8413.70.2040

**96081784 CRN 1S-4 A-FGJ-A-E-HQQE 60 Hz**



Description	Value
<b>General information:</b>	
Product name:	CRN 1S-4 A-FGJ-A-E-HQQE
Product No.:	96081784
EAN:	5700395162387
<b>Technical:</b>	
Rated flow:	4.84 US gpm
Rated head:	77.76 ft
Stages:	4
Impellers:	4
Number of reduced-diameter impellers:	0
Low NPSH:	N
Pump orientation:	Vertical
Shaft seal arrangement:	Single
Code for shaft seal:	HQQE
Approvals on nameplate:	CURUS, NSF61
Curve tolerance:	ISO9906:2012 3B
Pump version:	A
Model:	A
Cooling:	TEFC
<b>Materials:</b>	
Base:	Stainless steel
	EN 1.4408
	AISI 316
Impeller:	Stainless steel
	EN 1.4401
	AISI 316
Material code:	A
Code for rubber:	E
Bearing:	SIC
<b>Installation:</b>	
Maximum ambient temperature:	104 °F
Maximum operating pressure:	363 psi
Max pressure at stated temperature:	363 psi / 250 °F
	363 psi / -4 °F
Type of connection:	DIN / ANSI / JIS
Size of inlet connection:	DN 25/32
Size of suction port:	1 1/4 inch
Size of outlet connection:	DN 25/32
Size of outlet port:	1 1/4 inch
Pressure rating for pipe connection:	PN 25
Flange rating inlet:	300 lb
Flange size for motor:	56C
Connect code:	FGJ
<b>Liquid:</b>	
Pumped liquid:	Water
Liquid temperature range:	-4 .. 248 °F
Liquid temperature during operation:	68 °F
Density:	62.29 lb/ft³
<b>Electrical data:</b>	
Motor standard:	NEMA
Motor type:	Baldor
Rated power - P2:	0.33 HP
Power (P2) required by pump:	0.33 HP
Main frequency:	60 Hz
Rated voltage:	1 x 115/230 V
Service factor:	1.35
Rated current:	6.00/3.00 A
Load current:	6.8/3.4 A
Rated speed:	3450 rpm
Number of poles:	2
Insulation class (IEC 85):	B
Motor Number:	85680001
<b>Controls:</b>	
Frequency converter:	NONE
<b>Others:</b>	
Net weight:	53.8 lb



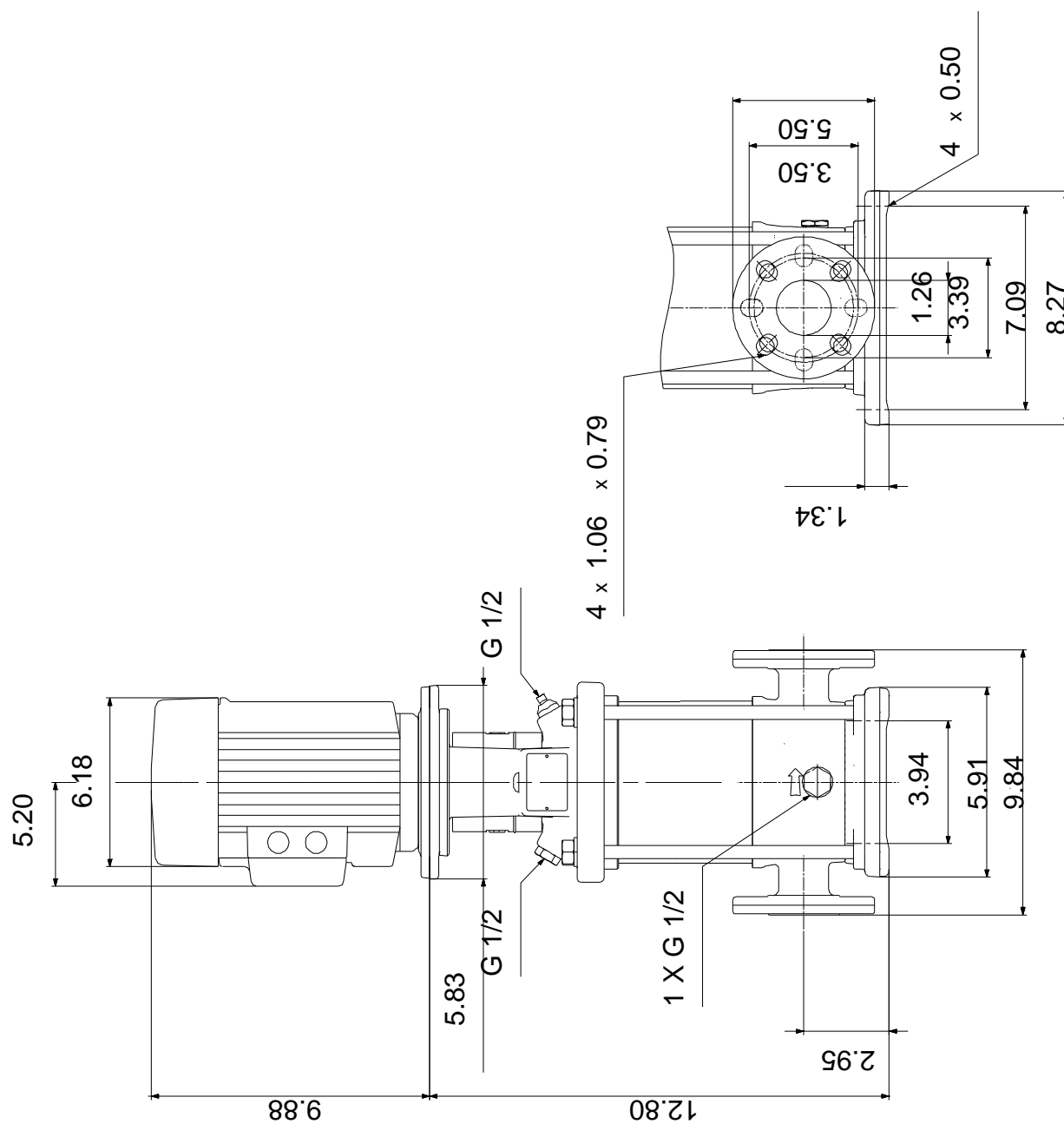


Company name:  
Created by:  
Phone:

Date: 10/24/2018

Description	Value
Gross weight:	64.8 lb
Shipping volume:	4.94 ft³
Country of origin:	US
Custom tariff no.:	8413.70.2040

## 96081784 CRN 1S-4 A-FGJ-A-E-HQQE 60 Hz



96081784 CRN 1S-4 A-FGJ-A-E-HQQE 60 Hz

