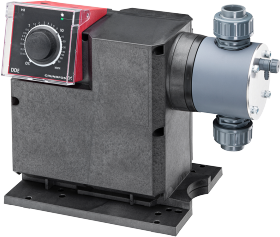


Count	Description
1	<p data-bbox="298 415 423 445">DDE 60-10</p> <div data-bbox="349 516 626 751">  </div> <p data-bbox="683 795 1138 821" style="text-align: center;">Product photo could vary from the actual product</p> <p data-bbox="298 829 704 884">Product No.: 99159412 DDE 60-10 B-PVC/E/C-F-31A7A7BG</p> <p data-bbox="298 915 1349 1041">The SMART Digital DDE is a compact positive displacement, diaphragm dosing pump with variable-speed drive (PMS motor) and intelligent control electronics with minimum energy consumption. The SMART Digital Dosing series operates at full stroke length to ensure optimum accuracy, priming and suction, even for degassing liquids. The duration of each discharge stroke varies according to the capacity set, resulting in optimum smooth and continuous discharge flow.</p> <p data-bbox="298 1058 1373 1134">The mounting plate allows quick installation and service. The control cube can be turned easily into front, left or right position. The dosing flow can be adjusted by means of an adjustment knob on a logarithmical scale from 0.1-100%. The control elements are protected by a transparent cover.</p> <p data-bbox="298 1171 662 1201">The dosing head is composed of:</p> <ul data-bbox="337 1203 1211 1287" style="list-style-type: none"> - Long lifetime and universal, chemically resistant full double PTFE diaphragm. - Ball valves for highest dosing accuracy. - Deaeration valve for easy startup. <p data-bbox="298 1320 496 1350">Operating modes:</p> <ul data-bbox="337 1352 735 1381" style="list-style-type: none"> - Manual dosing from 0.1 to 100%. <p data-bbox="298 1440 410 1465">Controls:</p> <p data-bbox="298 1470 696 1524">Control variant: B Ext. Stop input: NO</p> <p data-bbox="298 1558 383 1583">Liquid:</p> <p data-bbox="298 1587 789 1705">Pumped liquid: Water Liquid temperature range: 32 .. 104 °F Liquid temperature during operation: 68 °F Density: 62.29 lb/ft³</p> <p data-bbox="298 1738 423 1764">Technical:</p> <p data-bbox="298 1768 1065 1885">Type key: DDE 60-10 B-PVC/E/C-F-31A7A7BG Max. Flow: 15.85 US gal/hour Min flow: 75 ml/h Turn-down ratio: 1:800</p>



Company name: Specs

Created by:

Phone:

Date: 1/14/2019

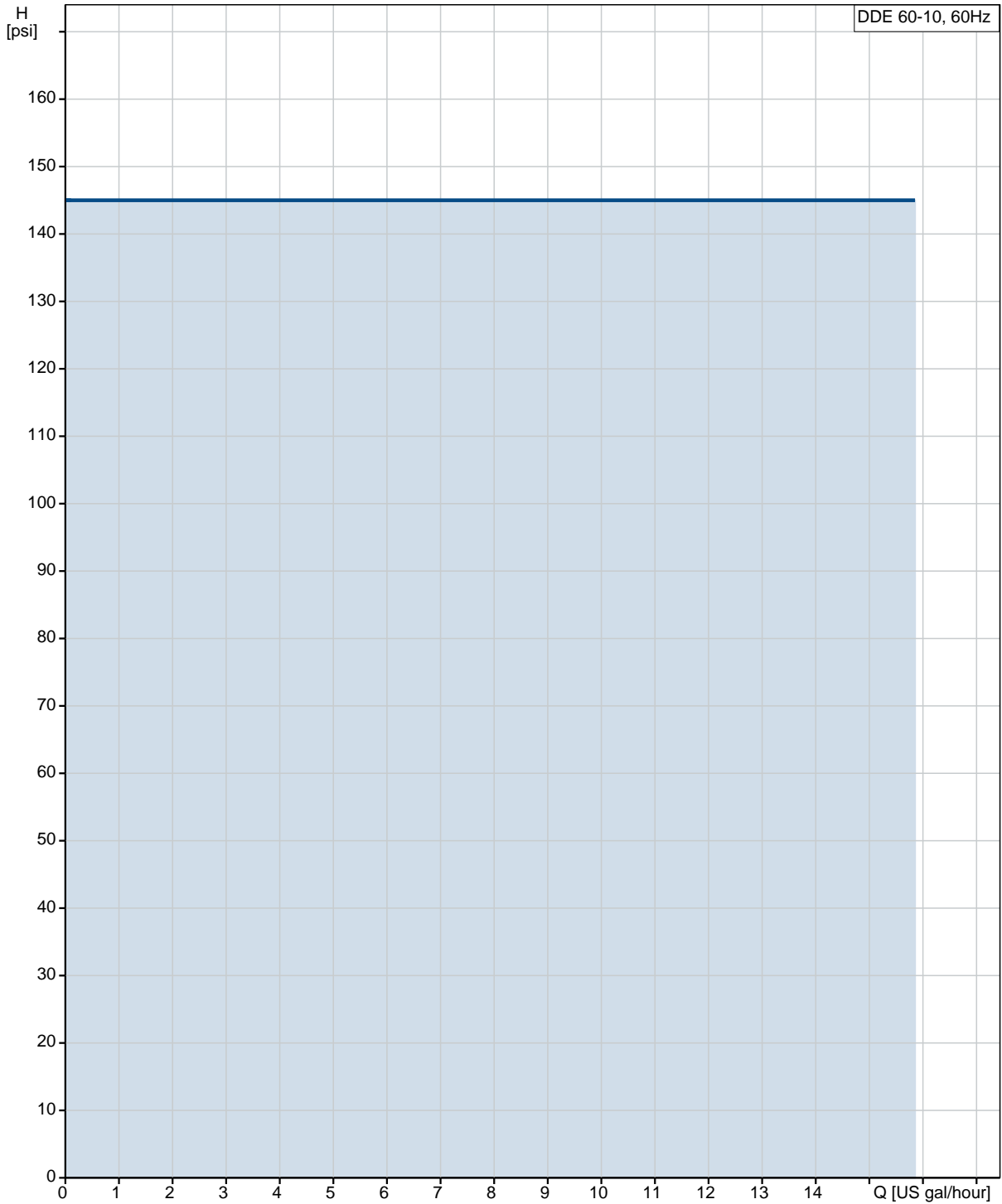
Count	Description
	Approvals on nameplate: CE,CSA-US,NSF61,RCM Valve type: Standard Maximum viscosity at 100 %: 100 mPas Maximum viscosity in slow mode 50 %: N/A mPas Maximum viscosity in slow mode 25 %: N/A mPas Accuracy of repeatability: 5 %
	Materials: Dosing head: PVC (Polyvinyl chloride) Valve ball: Ceramic Gasket: EPDM
	Installation: Range of ambient temperature: 32 .. 113 °F Maximum operating pressure: 145 psi Installation set: NO Installation type: No installation set Pump inlet: Conn. Threaded 3/4#NPTM CodeA7 Pump outlet: Conn. Threaded 3/4#NPTM CodeA7 Max. Suction lift during operation: 9.843 ft Max. Suction lift during priming: 4.922 ft
	Electrical data: Maximum power input - P1: 62 W Main frequency: 60 Hz Rated voltage: 1 x 100-240 V Enclosure class (IEC 34-5): IP65 / NEMA 4X Length of cable: 4.922 ft Type of cable plug: USA, Canada Inrush current: 70A at 240V (35A/100V) for 2ms
	Others: Net weight: 13.2 lb Gross weight: 15.4 lb COLOR: RED



Company name: Specs
Created by:
Phone:

Date: 1/14/2019

99159412 DDE 60-10 60 Hz

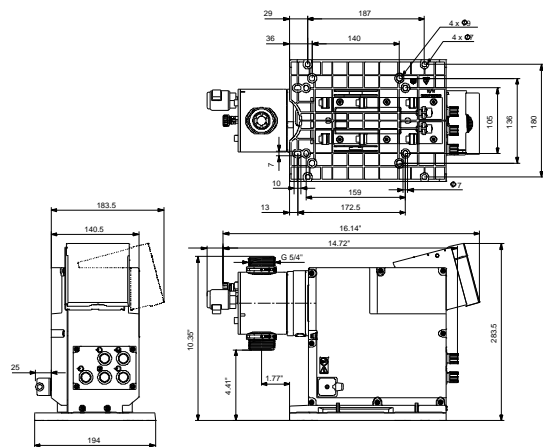
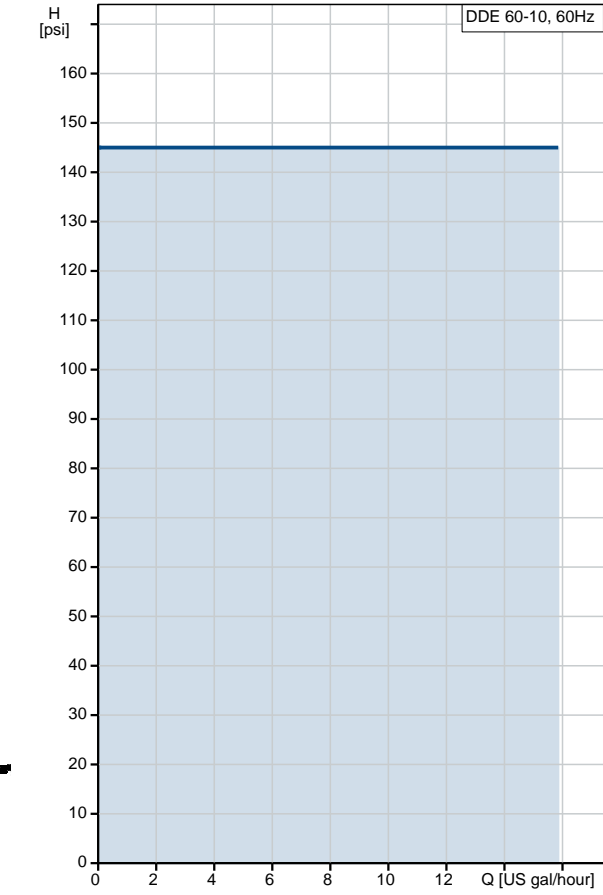




Company name: Specs
 Created by:
 Phone:

Date: 1/14/2019

Description	Value
General information:	
Product name:	DDE 60-10
Product No.:	99159412
EAN:	5712607842000
Technical:	
Type key:	DDE 60-10 B-PVC/E/C-F-31A7A 7BG
Max. Flow:	15.85 US gal/hour
Min flow:	75 ml/h
Turn-down ratio:	1:800
Approvals on nameplate:	CE, CSA-US, NSF61, RCM
Valve type:	Standard
Maximum viscosity at 100 %:	100 mPas
Maximum viscosity in slow mode 50 %:	N/A mPas
Maximum viscosity in slow mode 25 %:	N/A mPas
Accuracy of repeatability:	5 %
Materials:	
Dosing head:	PVC (Polyvinyl chloride)
Valve ball:	Ceramic
Gasket:	EPDM
Installation:	
Range of ambient temperature:	32 .. 113 °F
Maximum operating pressure:	145 psi
Installation set:	NO
Installation type:	No installation set
Pump inlet:	Conn. Threaded 3/4#NPTM CodeA7
Pump outlet:	Conn. Threaded 3/4#NPTM CodeA7
Max. Suction lift during operation:	9.843 ft
Max. Suction lift during priming:	4.922 ft
Liquid:	
Pumped liquid:	Water
Liquid temperature range:	32 .. 104 °F
Liquid temperature during operation:	68 °F
Density:	62.29 lb/ft ³
Electrical data:	
Maximum power input - P1:	62 W
Main frequency:	60 Hz
Rated voltage:	1 x 100-240 V
Enclosure class (IEC 34-5):	IP65 / NEMA 4X
Length of cable:	4.922 ft
Type of cable plug:	USA, Canada
Inrush current:	70A at 240V (35A/100V) for 2ms
Controls:	
Control variant:	B



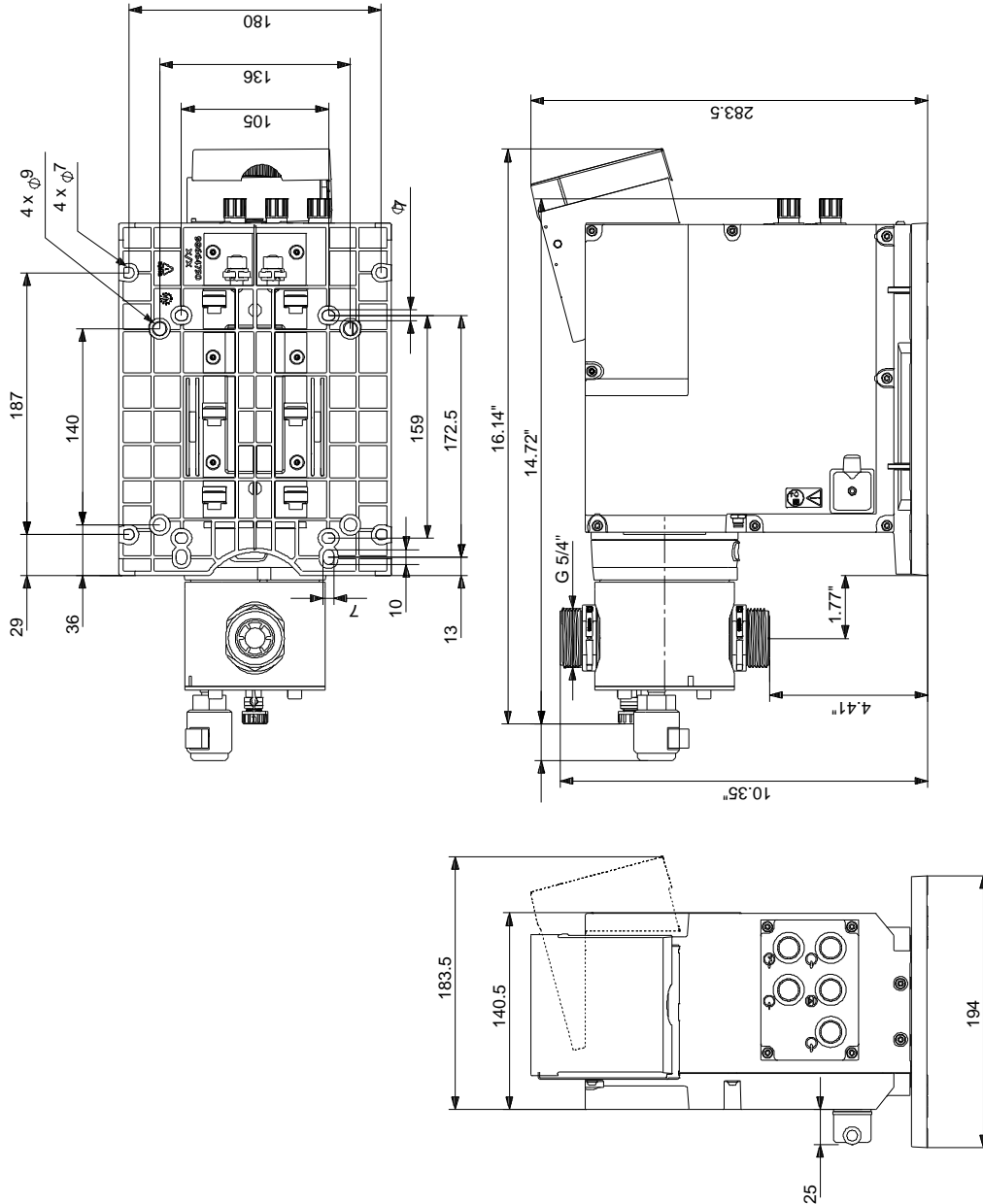


Company name: Specs
Created by:
Phone:

Date: 1/14/2019

Description	Value
Control panel:	FRONT-MOUNTED
Ext. Stop input:	NO
Others:	
Net weight:	13.2 lb
Gross weight:	15.4 lb
COLOR:	RED

99159412 DDE 60-10 60 Hz



Note! All units are in [mm] unless otherwise stated.
 Disclaimer: This simplified dimensional drawing does not show all details.