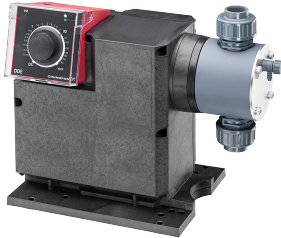


Count	Description
-------	-------------

1	<b>DDE 200-4</b>
---	------------------



Product photo could vary from the actual product

Product No.: [99159446](#)  
 DDE 200-4 B-SS/T/SS-F-31A3A3BG

The SMART Digital DDE is a compact positive displacement, diaphragm dosing pump with variable-speed drive (PMS motor) and intelligent control electronics with minimum energy consumption. The SMART Digital Dosing series operates at full stroke length to ensure optimum accuracy, priming and suction, even for degassing liquids. The duration of each discharge stroke varies according to the capacity set, resulting in optimum smooth and continuous discharge flow.

The mounting plate allows quick installation and service. The control cube can be turned easily into front, left or right position. The dosing flow can be adjusted by means of an adjustment knob on a logarithmical scale from 0.1-100%. The control elements are protected by a transparent cover.

The dosing head is composed of:

- Long lifetime and universal, chemically resistant full double PTFE diaphragm.
- Ball valves for highest dosing accuracy.
- Deaeration valve for easy startup.

Operating modes:

- Manual dosing from 0.1 to 100%.

**Controls:**

Control variant: B  
 Ext. Stop input: NO

**Liquid:**

Pumped liquid: Water  
 Liquid temperature range: 32 .. 122 °F  
 Liquid temperature during operation: 68 °F  
 Density: 62.29 lb/ft³

**Technical:**

Type key: DDE 200-4 B-SS/T/SS-F-31A3A3BG  
 Max. Flow: 52.83 US gal/hour  
 Min flow: 250 ml/h  
 Turn-down ratio: 1:800  
 Approvals on nameplate: CE, CSA-US, NSF61, RCM  
 Valve type: Standard  
 Maximum viscosity at 100 %: 100 mPas  
 Maximum viscosity in slow mode 50 %: N/A mPas  
 Maximum viscosity in slow mode 25 %: N/A mPas  
 Accuracy of repeatability: 5 %

**Materials:**

Dosing head: Stainless Steel 1.4435  
 Valve ball: Stainless steel



Company name:

Created by:

Phone:

Date:

1/18/2019

Count	Description
	Gasket: PTFE
	<b>Installation:</b>
	Range of ambient temperature: 32 .. 113 °F
	Maximum operating pressure: 58 psi
	Installation set: NO
	Installation type: No installation set
	Pump inlet: Conn. threaded 3/4#NPTF CodeA3
	Pump outlet: Conn. threaded 3/4#NPTF CodeA3
	Max. Suction lift during operation: 9.843 ft
	Max. Suction lift during priming: 4.922 ft
	<b>Electrical data:</b>
	Maximum power input - P1: 62 W
	Main frequency: 60 Hz
	Rated voltage: 1 x 100-240 V
	Enclosure class (IEC 34-5): IP65 / NEMA 4X
	Length of cable: 4.922 ft
	Type of cable plug: USA, Canada
	Inrush current: 70A at 240V (35A/100V) for 2ms
	<b>Others:</b>
	Net weight: 17.6 lb
	Gross weight: 19.8 lb
	COLOR: RED



Company name:

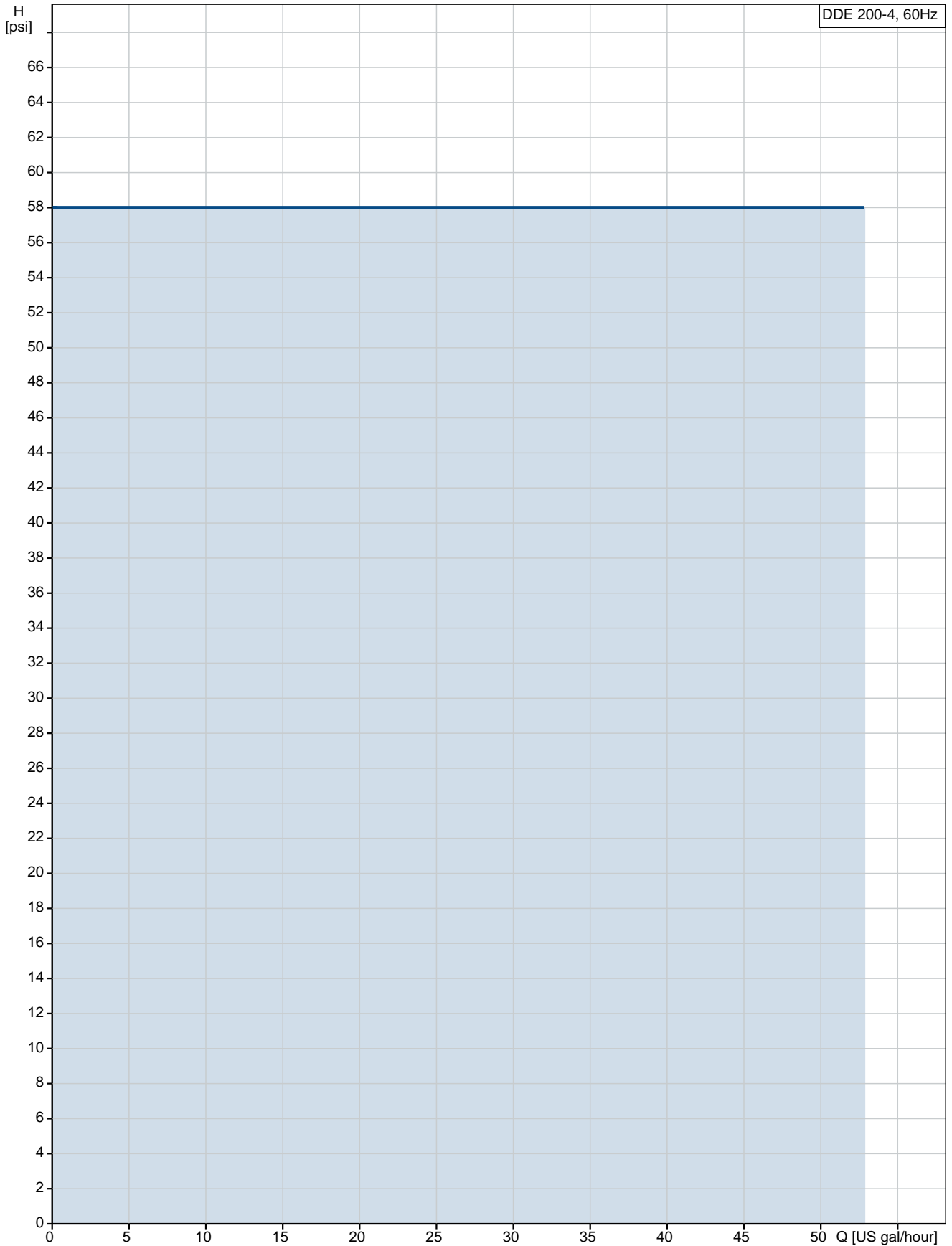
Created by:

Phone:

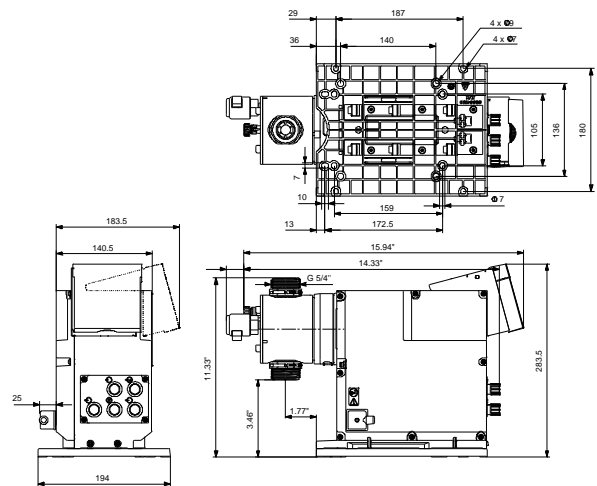
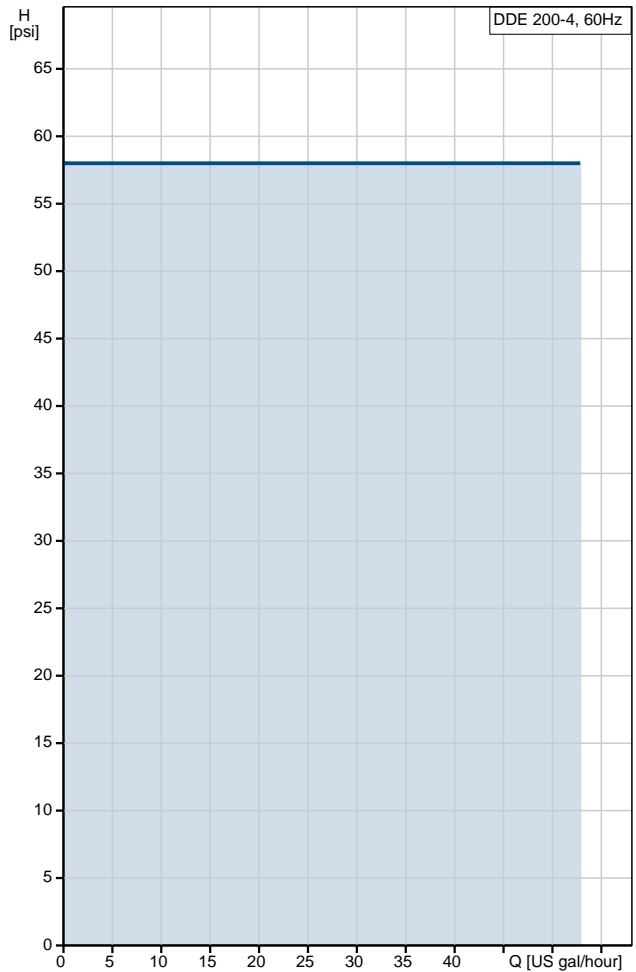
Date:

1/18/2019

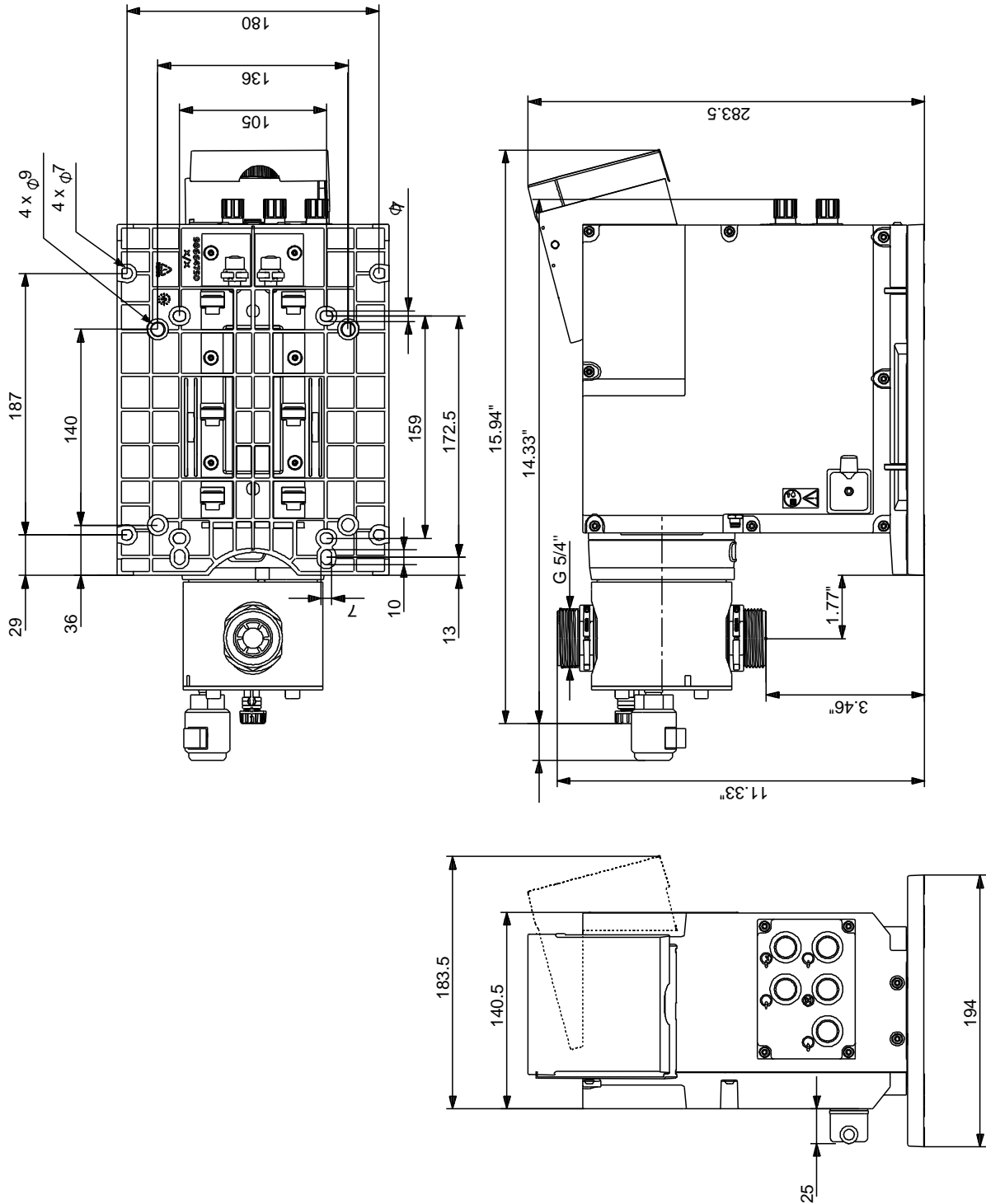
## 99159446 DDE 200-4 60 Hz



Description	Value
<b>General information:</b>	
Product name:	DDE 200-4
Product No.:	99159446
EAN:	5712607842345
<b>Technical:</b>	
Type key:	DDE 200-4 B-SS/T/SS-F-31A3A3BG
Max. Flow:	52.83 US gal/hour
Min flow:	250 ml/h
Turn-down ratio:	1:800
Approvals on nameplate:	CE,CSA-US,NSF61,RCM
Valve type:	Standard
Maximum viscosity at 100 %:	100 mPas
Maximum viscosity in slow mode 50 %:	N/A mPas
Maximum viscosity in slow mode 25 %:	N/A mPas
Accuracy of repeatability:	5 %
<b>Materials:</b>	
Dosing head:	Stainless Steel 1.4435
Valve ball:	Stainless steel
Gasket:	PTFE
<b>Installation:</b>	
Range of ambient temperature:	32 .. 113 °F
Maximum operating pressure:	58 psi
Installation set:	NO
Installation type:	No installation set
Pump inlet:	Conn. threaded 3/4#NPTF CodeA3
Pump outlet:	Conn. threaded 3/4#NPTF CodeA3
Max. Suction lift during operation:	9.843 ft
Max. Suction lift during priming:	4.922 ft
<b>Liquid:</b>	
Pumped liquid:	Water
Liquid temperature range:	32 .. 122 °F
Liquid temperature during operation:	68 °F
Density:	62.29 lb/ft <sup>3</sup>
<b>Electrical data:</b>	
Maximum power input - P1:	62 W
Main frequency:	60 Hz
Rated voltage:	1 x 100-240 V
Enclosure class (IEC 34-5):	IP65 / NEMA 4X
Length of cable:	4.922 ft
Type of cable plug:	USA, Canada
Inrush current:	70A at 240V (35A/100V) for 2ms
<b>Controls:</b>	
Control variant:	B
Control panel:	FRONT-MOUNTED
Ext. Stop input:	NO
<b>Others:</b>	
Net weight:	17.6 lb
Gross weight:	19.8 lb
COLOR:	RED



## 99159446 DDE 200-4 60 Hz



Note! All units are in [mm] unless otherwise stated.  
 Disclaimer: This simplified dimensional drawing does not show all details.