

PROJECT:	UNIT TAG:	QUANTITY:
REPRESENTATIVE:	TYPE OF SERVICE:	
ENGINEER:	SUBMITTED BY:	DATE:
CONTRACTOR:	APPROVED BY:	DATE:
	ORDER NO.:	DATE:

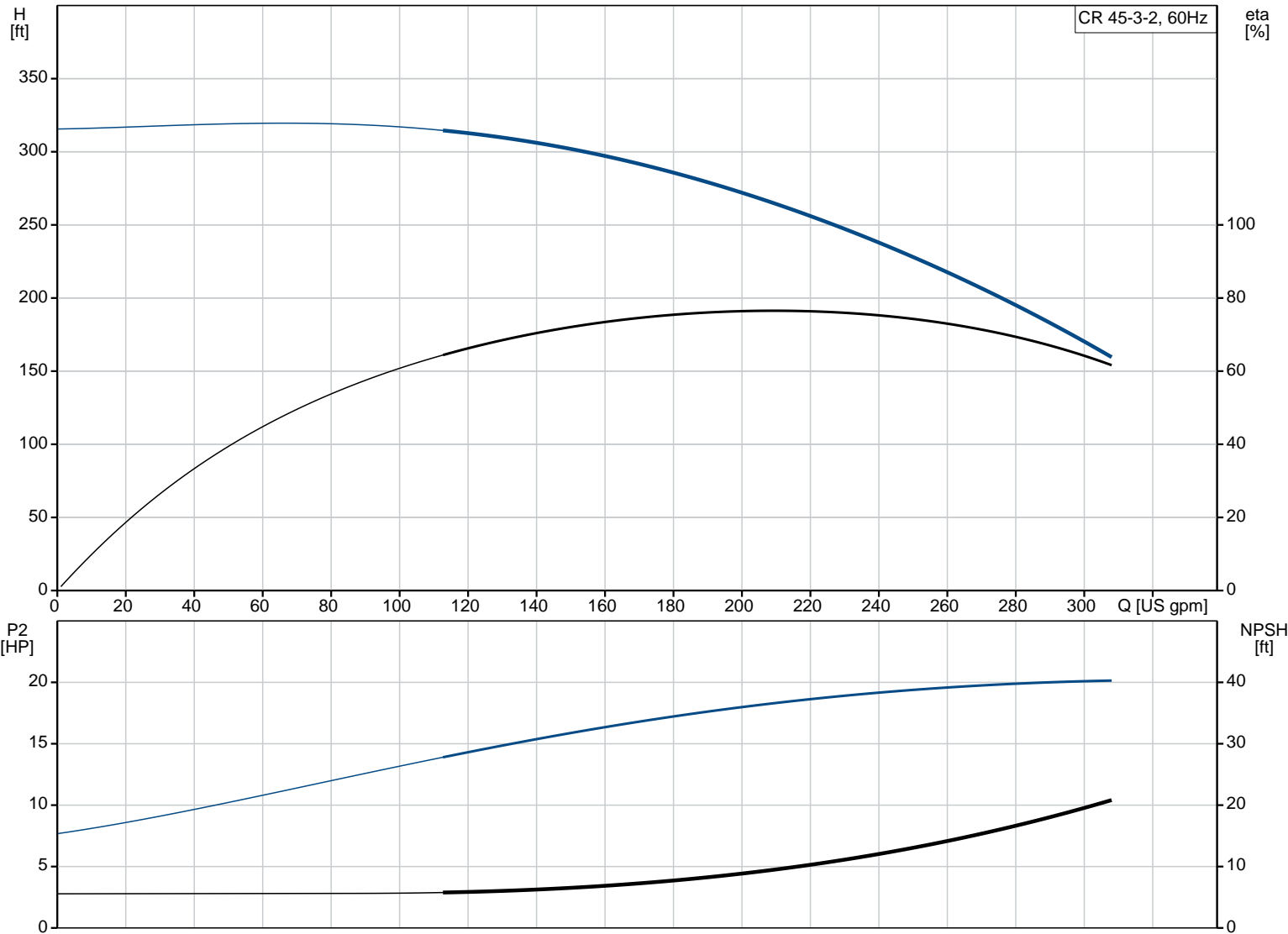


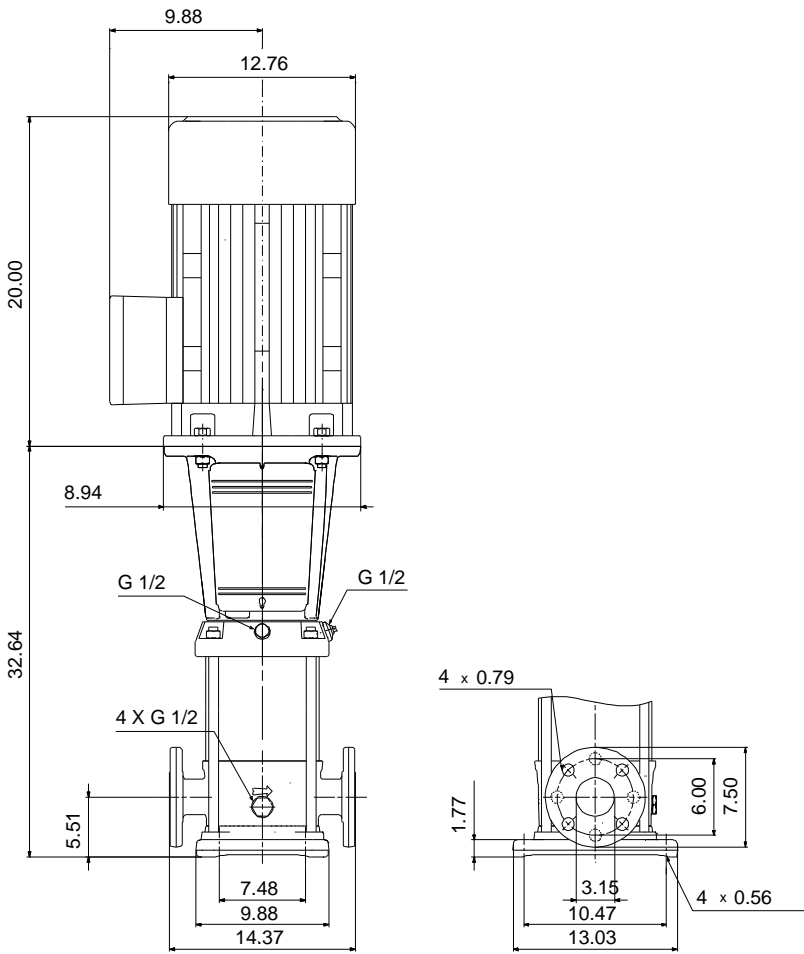
CR 45-3-2 A-G-A-E-HQQE

Vertical, multistage centrifugal pump with suction and discharge ports on the same level. The pump head and base are in cast iron. All other wetted parts are in stainless steel (EN 1.4301) (AISI 304)

Product photo could vary from the actual product

Conditions of Service	Pump Data	Motor Data
Flow: _____	Max pressure at stated temperature: 232 psi / 250 °F	Rated power - P2: 20 HP
Head: _____	Liquid temperature range: -22 .. 248 °F	Rated voltage: 208-230/460 V
Efficiency: _____	Maximum ambient temperature: 104 °F	Main frequency: 60 Hz
Liquid: Water	Approvals: CURUS,NSF61	Enclosure class: 54 Dust/Splashing
Temperature: 68 °F	Shaft seal: HQQE	Insulation class: F
NPSH required: ft	Product number: 96419139	Motor protection: NONE
Viscosity: _____		Motor type: Baldor
Specific Gravity: 1.000		






Materials:

Base: Cast iron
EN 1563 EN-GJS-500-7
ASTM A536 80-55-06

Impeller: Stainless steel
AISI 304
EN 1.4301

Material code: A

Code for rubber: E

Count	Description
1	<p>CR 45-3-2 A-G-A-E-HQQE</p>  <p>Product No.: 96419139 Vertical, non-self-priming, multistage, in-line, centrifugal pump for installation in pipe systems and mounting on a foundation.</p> <p>The pump has the following characteristics:</p> <ul style="list-style-type: none"> - Impellers and intermediate chambers are made of - The shaft seal has assembly length according to EN 12756. - Power transmission is via cast iron split coupling. <p>The motor is a 3-phase AC motor.</p> <p>Controls: Frequency converter: NONE</p> <p>Liquid: Pumped liquid: Water Liquid temperature range: -22 .. 248 °F Liquid temperature during operation: 68 °F Density: 62.29 lb/ft³</p> <p>Technical: Rated pump speed: 3497 rpm Rated flow: 238 US gpm Rated head: 247.4 ft Pump orientation: Vertical Shaft seal arrangement: Single Code for shaft seal: HQQE Approvals on nameplate: CURUS,NSF61 Curve tolerance: ISO9906:2012 3B</p> <p>Materials: Base: Cast iron EN 1563 EN-GJS-500-7 ASTM A536 80-55-06 Impeller: Stainless steel EN 1.4301 AISI 304 Bearing: SIC Support bearing: Grafflon</p> <p>Installation: Maximum ambient temperature: 104 °F Maximum operating pressure: 232 psi Max pressure at stated temperature: 232 psi / 250 °F 232 psi / -22 °F</p> <p>Type of connection: ANSI Size of suction port: 3 inch Size of outlet port: 3 inch Pressure rating for pipe connection: PN 16 Flange rating inlet: 150 lb Flange size for motor: 254TC</p> <p>Electrical data:</p>

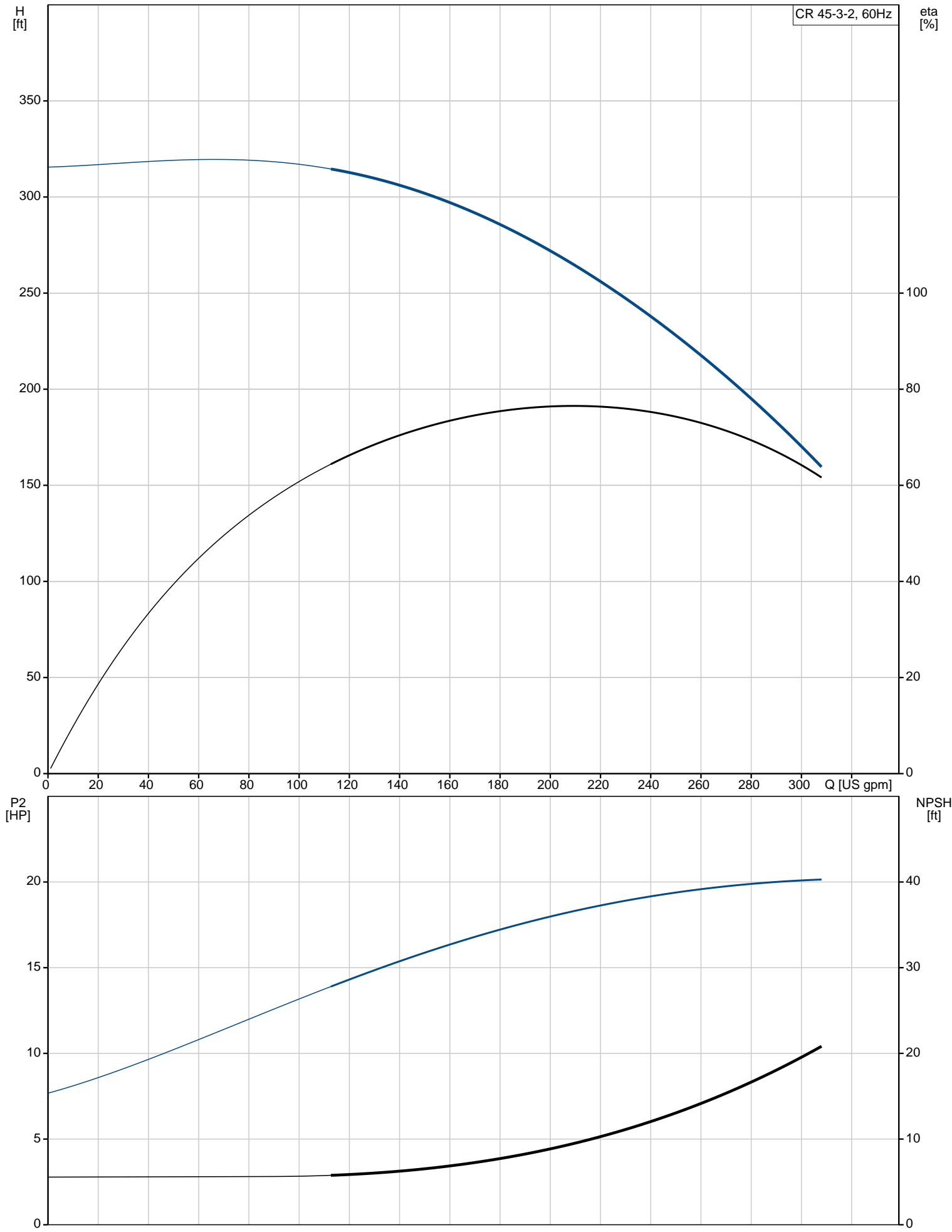


Company name:
Created by:
Phone:

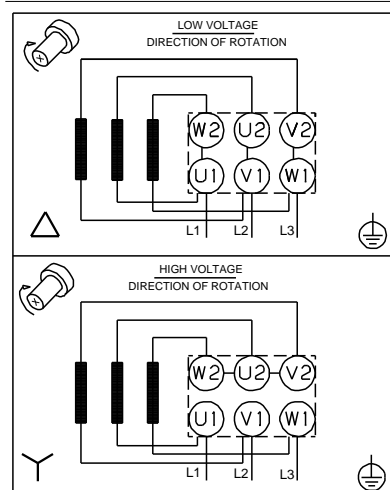
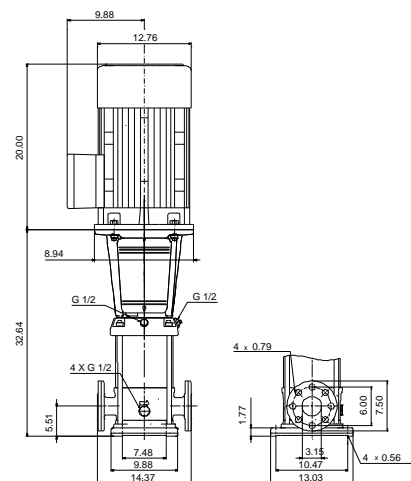
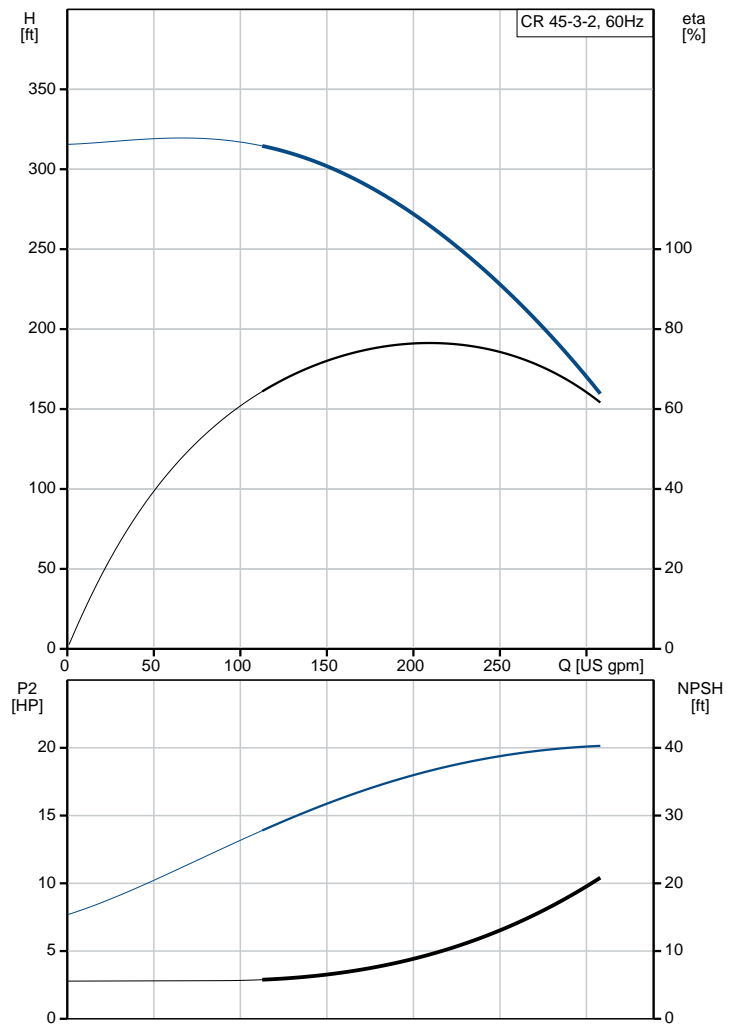
Date: 3/21/2019

Count	Description
	<div><div>Motor standard:</div><div>NEMA</div></div> <div><div>Motor type:</div><div>Baldor</div></div> <div><div>IE Efficiency class:</div><div>NEMA Premium / IE3 60Hz</div></div> <div><div>Rated power - P2:</div><div>20 HP</div></div> <div><div>Power (P2) required by pump:</div><div>20 HP</div></div> <div><div>Main frequency:</div><div>60 Hz</div></div> <div><div>Rated voltage:</div><div>3 x 208-230/460 V</div></div> <div><div>Service factor:</div><div>1.15</div></div> <div><div>Rated current:</div><div>48-44/22 A</div></div> <div><div>Rated speed:</div><div>3540 rpm</div></div> <div><div>Number of poles:</div><div>2</div></div> <div><div>Enclosure class (IEC 34-5):</div><div>54 Dust/Splashing</div></div> <div><div>Insulation class (IEC 85):</div><div>F</div></div> <div><div>Others:</div><div></div></div> <div><div>Net weight:</div><div>464 lb</div></div> <div><div>Gross weight:</div><div>482 lb</div></div> <div><div>Shipping volume:</div><div>29 ft³</div></div> <div><div>Country of origin:</div><div>US</div></div> <div><div>Custom tariff no.:</div><div>8413.70.2040</div></div>

96419139 CR 45-3-2 A-G-A-E-HQQE 60 Hz



Description	Value
General information:	
Product name:	CR 45-3-2 A-G-A-E-HQQE
Product No.:	96419139
EAN:	5700390748289
Technical:	
Rated pump speed:	3497 rpm
Rated flow:	238 US gpm
Rated head:	247.4 ft
Head max:	316.6 ft
Stages:	3
Impellers:	3
Number of reduced-diameter impellers:	2
Low NPSH:	N
Pump orientation:	Vertical
Shaft seal arrangement:	Single
Code for shaft seal:	HQQE
Approvals on nameplate:	CURUS, NSF61
Curve tolerance:	ISO9906:2012 3B
Pump version:	A
Model:	B
Cooling:	TEFC
Materials:	
Base:	Cast iron
	EN 1563 EN-GJS-500-7
	ASTM A536 80-55-06
Impeller:	Stainless steel
	EN 1.4301
	AISI 304
Material code:	A
Code for rubber:	E
Bearing:	SIC
Support bearing:	Graflon
Installation:	
Maximum ambient temperature:	104 °F
Maximum operating pressure:	232 psi
Max pressure at stated temperature:	232 psi / 250 °F
	232 psi / -22 °F
Type of connection:	ANSI
Size of suction port:	3 inch
Size of outlet port:	3 inch
Pressure rating for pipe connection:	PN 16
Flange rating inlet:	150 lb
Flange size for motor:	254TC
Connect code:	G
Liquid:	
Pumped liquid:	Water
Liquid temperature range:	-22 .. 248 °F
Liquid temperature during operation:	68 °F
Density:	62.29 lb/ft³
Electrical data:	
Motor standard:	NEMA
Motor type:	Baldor
IE Efficiency class:	NEMA Premium / IE3 60Hz
Rated power - P2:	20 HP
Power (P2) required by pump:	20 HP
KVA code:	K
Main frequency:	60 Hz
Rated voltage:	3 x 208-230/460 V
Service factor:	1.15
Rated current:	48-44/22 A
Load current:	56-50/25 A
Rated speed:	3540 rpm
Number of poles:	2
Enclosure class (IEC 34-5):	54 Dust/Splashing
Insulation class (IEC 85):	F
Motor protection:	NONE



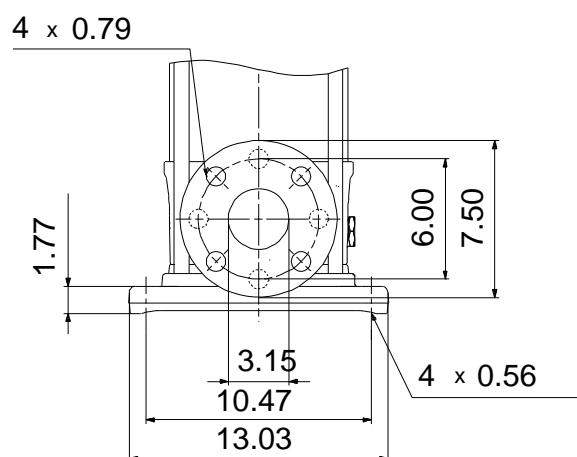
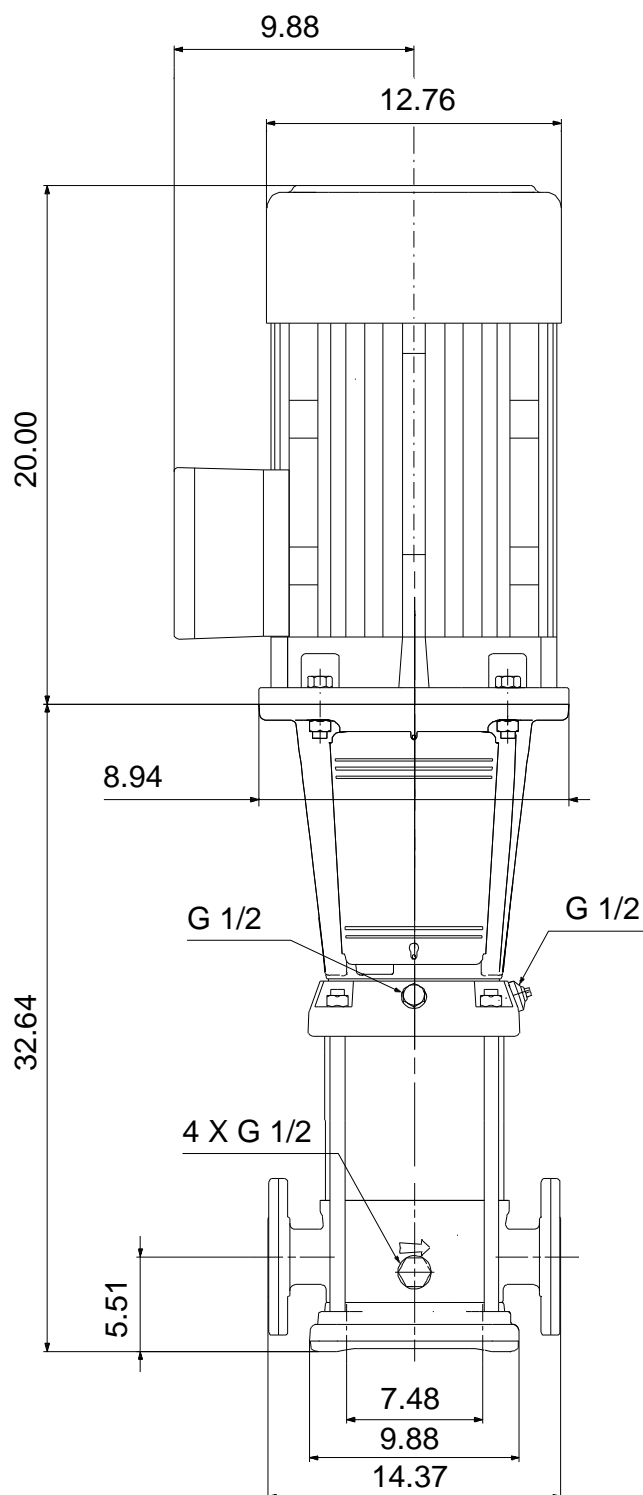


Company name:
Created by:
Phone:

Date: 3/21/2019

Description	Value
Motor Number:	84Z03971
Controls:	
Frequency converter:	NONE
Others:	
Net weight:	464 lb
Gross weight:	482 lb
Shipping volume:	29 ft³
Sales region:	Namreg
Country of origin:	US
Custom tariff no.:	8413.70.2040

96419139 CR 45-3-2 A-G-A-E-HQQE 60 Hz



96419139 CR 45-3-2 A-G-A-E-HQQE 60 Hz

