

| | | | | | |
|-----------------|-------|------------------|-------|-----------|-------|
| PROJECT: | _____ | UNIT TAG: | _____ | QUANTITY: | _____ |
| REPRESENTATIVE: | _____ | TYPE OF SERVICE: | _____ | DATE: | _____ |
| ENGINEER: | _____ | SUBMITTED BY: | _____ | DATE: | _____ |
| CONTRACTOR: | _____ | APPROVED BY: | _____ | DATE: | _____ |
| | _____ | ORDER NO.: | _____ | DATE: | _____ |

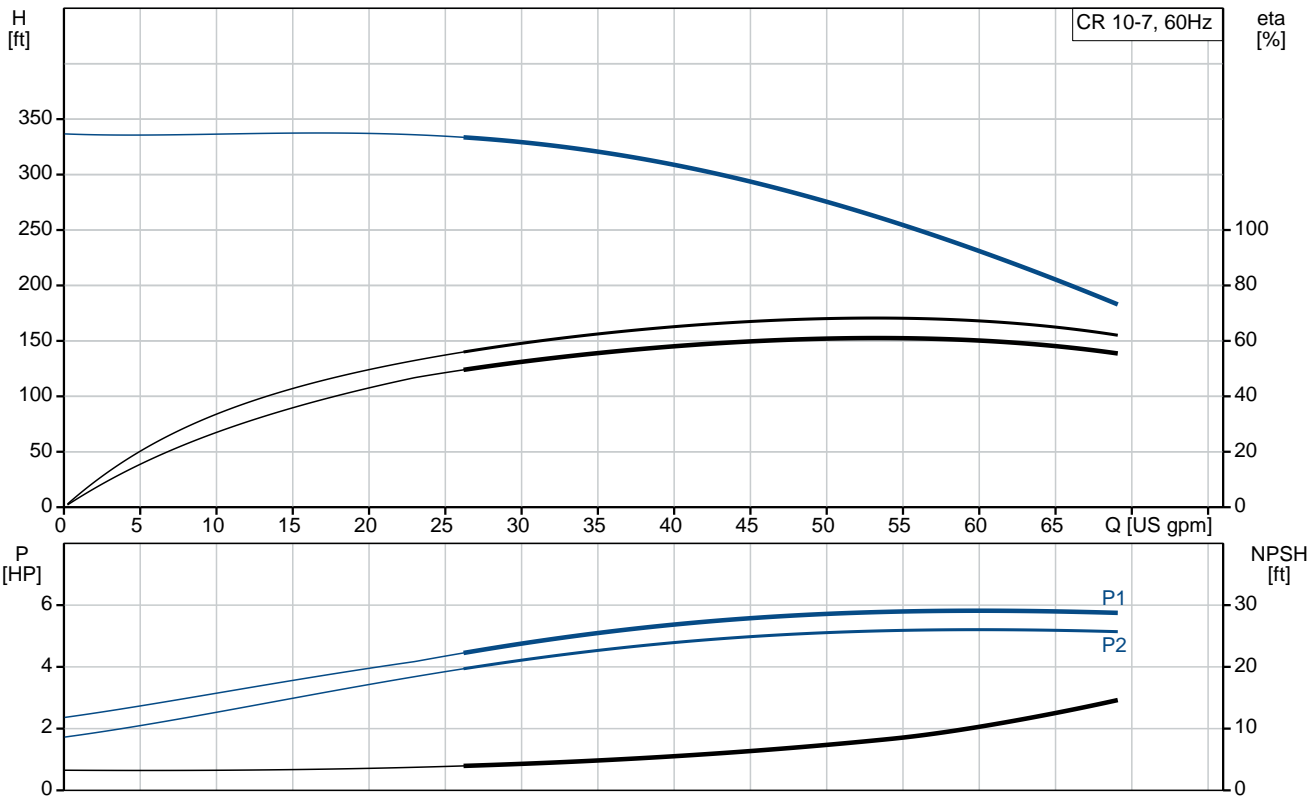


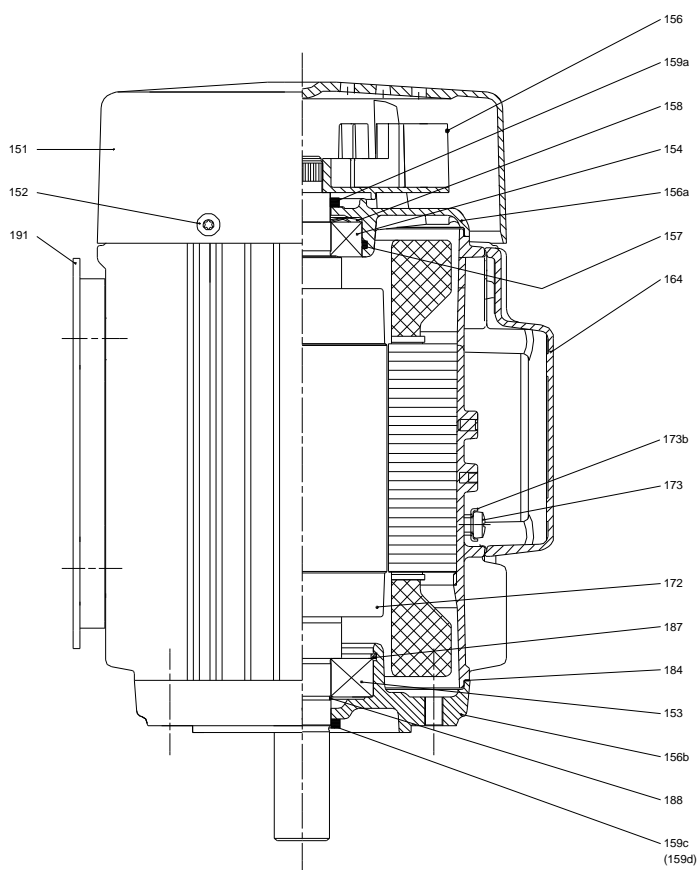
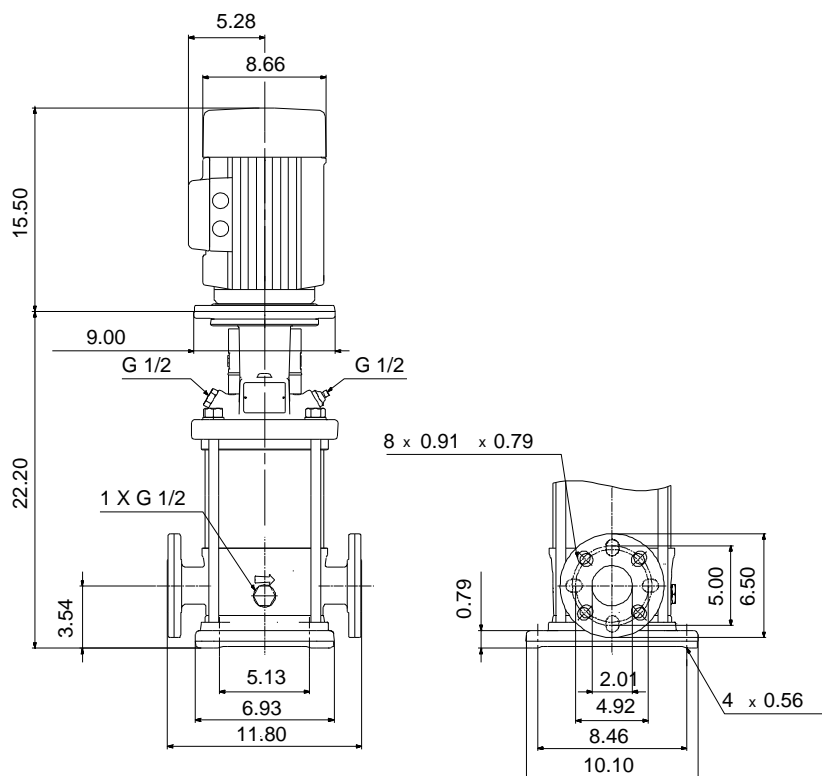
CR 10-7A-GJ-A-V-HQQV

Vertical, multistage centrifugal pump with suction and discharge ports on the same level. The pump head and base are in cast iron. All other wetted parts are in stainless steel (EN 1.4301)(AISI 304)

Product photo could vary from the actual product

| Conditions of Service | Pump Data | Motor Data |
|-------------------------|--|----------------------------------|
| Flow: _____ | Max pressure at stated temperature: 232 psi / 194 °F | Rated power - P2: 7.5 HP |
| Head: _____ | Liquid temperature range: -4 .. 194 °F | Rated voltage: 208-230YY/460Y V |
| Efficiency: _____ | Maximum ambient temperature: 140 °F | Main frequency: 60 Hz |
| Liquid: Water | Approvals: CURUS | Enclosure class: 55 Dust/Jetting |
| Temperature: 68 °F | Shaft seal: HQQV | Insulation class: F |
| NPSH required: ft | Product number: 97743225 | Motor protection: PTC |
| Viscosity: _____ | | Motor type: 132DA |
| Specific Gravity: 1.000 | | Motor_efficiency: 89.5 % |





Materials:

Base:

Cast iron
EN 1561 EN-GJL-200
ASTM A48-25B

Impeller:

Stainless steel
AISI 304
EN 1.4301

Material code:

A

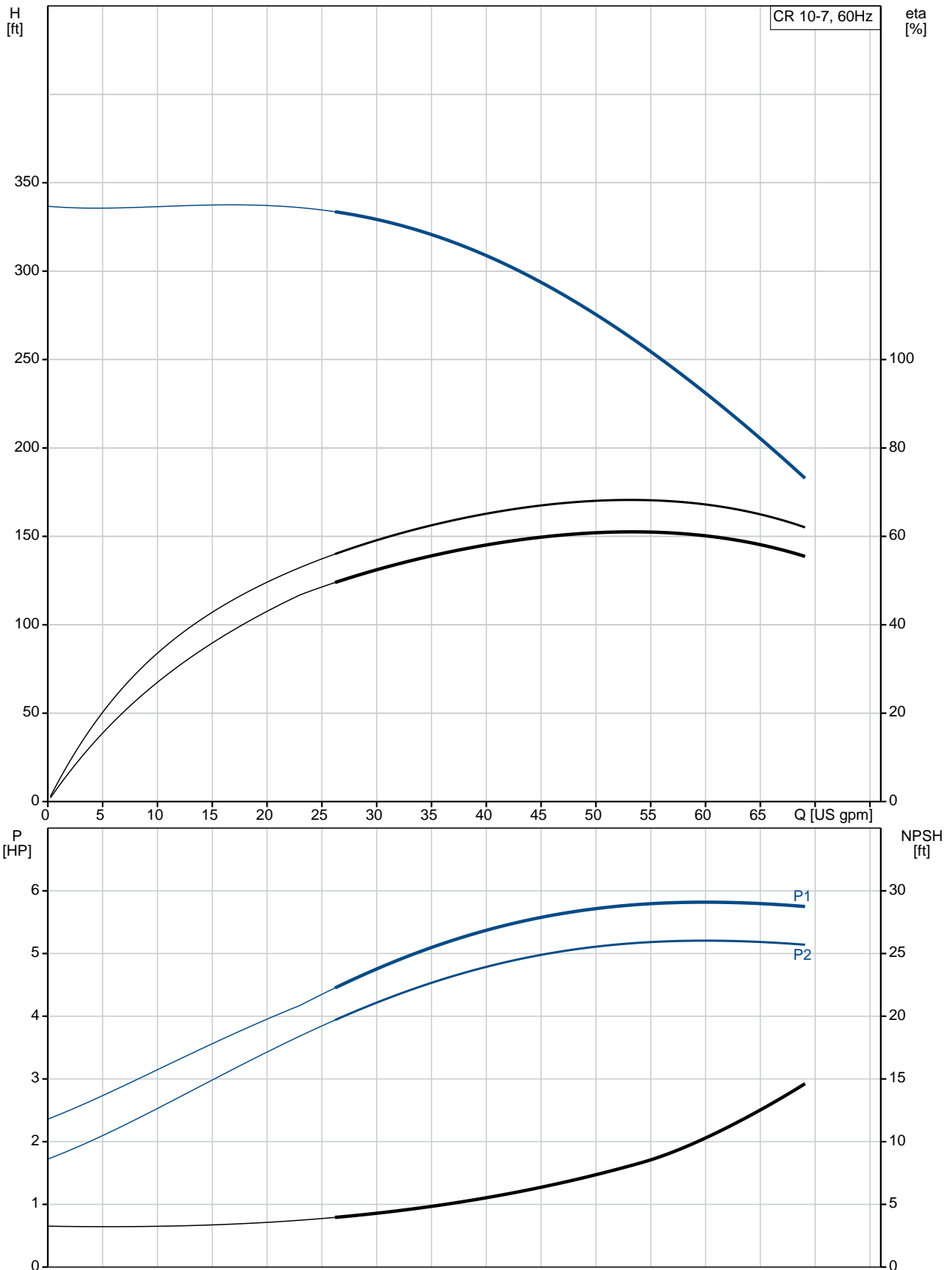
Code for rubber:

V

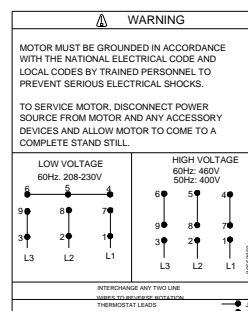
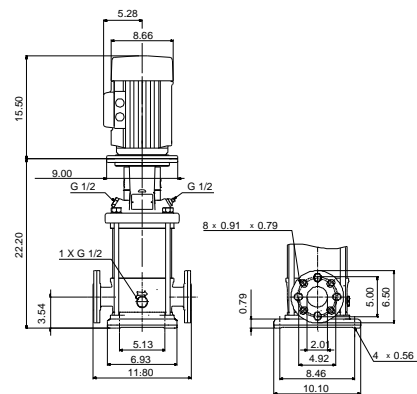
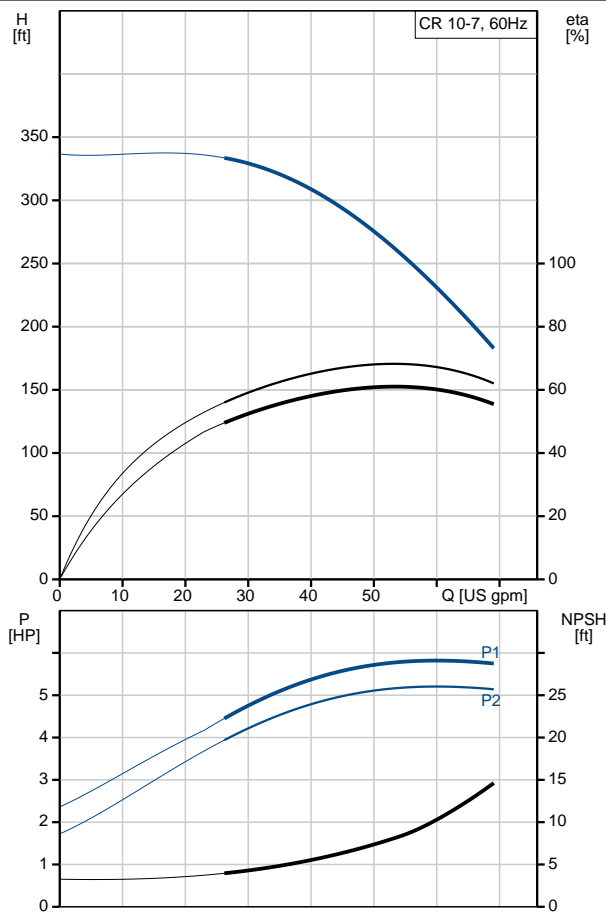
| Count | Description |
|-------|--|
| 1 | <p>CR 10-7A-GJ-A-V-HQQV</p>  <p>Product photo could vary from the actual product</p> <p>Product No.: 97743225</p> <p>Vertical, non-self-priming, multistage, in-line, centrifugal pump for installation in pipe systems and mounting on a foundation.</p> <p>The pump has the following characteristics:</p> <ul style="list-style-type: none"> - Impellers and intermediate chambers are made of - The shaft seal has assembly length according to EN 12756. - Power transmission is via cast iron split coupling. <p>The motor is a 3-phase AC motor.</p> <p>Controls:</p> <p>Frequency converter: NONE</p> <p>Liquid:</p> <p>Pumped liquid: Water</p> <p>Liquid temperature range: -4 .. 194 °F</p> <p>Selected liquid temperature: 68 °F</p> <p>Density: 62.29 lb/ft³</p> <p>Technical:</p> <p>Rated pump speed: 3461 rpm</p> <p>Rated flow: 53.3 US gpm</p> <p>Rated head: 262.2 ft</p> <p>Pump orientation: Vertical</p> <p>Shaft seal arrangement: Single</p> <p>Code for shaft seal: HQQV</p> <p>Approvals on nameplate: CURUS</p> <p>Curve tolerance: ISO9906:2012 3B</p> <p>Materials:</p> <p>Base: Cast iron EN 1561 EN-GJL-200 ASTM A48-25B</p> <p>Impeller: Stainless steel EN 1.4301 AISI 304</p> <p>Bearing: SIC</p> <p>Installation:</p> <p>Maximum ambient temperature: 140 °F</p> |

| Count | Description |
|-------|--|
| | <p>Maximum operating pressure: 232.06 psi Max pressure at stated temperature: 232 psi / 194 °F 232 psi / -4 °F</p> <p>Type of connection: ANSI / JIS Size of inlet connection: DN 50 Size of suction port: 2 inch Size of outlet connection: DN 50 Size of outlet port: 2 inch Pressure rating for pipe connection: PN 25 Flange rating inlet: 300 lb Flange size for motor: 213TC</p> <p>Electrical data:</p> <p>Motor standard: NEMA Motor type: 132DA IE Efficiency class: NEMA Premium / IE3 60Hz Rated power - P2: 7.5 HP Power (P2) required by pump: 7.5 HP Main frequency: 60 Hz Rated voltage: 3 x 208-230YY/460Y V Service factor: 1.15 Rated current: 19,5-18,1/9,09 A Starting current: 1020-1480 % Cos phi - power factor: 0.89-0.86 Rated speed: 3490-3515 rpm IE efficiency: IE3 89,5% Motor efficiency at full load: 89.5 % Motor efficiency at 3/4 load: 89.7 % Motor efficiency at 1/2 load: 88.3 % Number of poles: 2 Enclosure class (IEC 34-5): 55 Dust/Jetting Insulation class (IEC 85): F Motor Number: 85904392</p> <p>Others:</p> <p>Net weight: 196 lb Gross weight: 212 lb Shipping volume: 8.26 ft³ Country of origin: US Custom tariff no.: 8413.70.2040</p> |

97743225 CR 10-7A-GJ-A-V-HQQV 60 Hz



| Description | Value |
|---------------------------------------|-------------------------|
| General information: | |
| Product name: | CR 10-7A-GJ-A-V-HQQV |
| Product No.: | 97743225 |
| EAN: | 5710623582764 |
| Technical: | |
| Rated pump speed: | 3461 rpm |
| Rated flow: | 53.3 US gpm |
| Rated head: | 262.2 ft |
| Head max: | 337.9 ft |
| Stages: | 7 |
| Impellers: | 7 |
| Number of reduced-diameter impellers: | 0 |
| Low NPSH: | N |
| Pump orientation: | Vertical |
| Shaft seal arrangement: | Single |
| Code for shaft seal: | HQQV |
| Approvals on nameplate: | CURUS |
| Curve tolerance: | ISO9906:2012 3B |
| Pump version: | A |
| Model: | A |
| Cooling: | TEFC |
| Materials: | |
| Base: | Cast iron |
| | EN 1561 EN-GJL-200 |
| | ASTM A48-25B |
| Impeller: | Stainless steel |
| | EN 1.4301 |
| | AISI 304 |
| Material code: | A |
| Code for rubber: | V |
| Bearing: | SIC |
| Installation: | |
| Maximum ambient temperature: | 140 °F |
| Maximum operating pressure: | 232.06 psi |
| Max pressure at stated temperature: | 232 psi / 194 °F |
| | 232 psi / -4 °F |
| Type of connection: | ANSI / JIS |
| Size of inlet connection: | DN 50 |
| Size of suction port: | 2 inch |
| Size of outlet connection: | DN 50 |
| Size of outlet port: | 2 inch |
| Pressure rating for pipe connection: | PN 25 |
| Flange rating inlet: | 300 lb |
| Flange size for motor: | 213TC |
| Connect code: | GJ |
| Liquid: | |
| Pumped liquid: | Water |
| Liquid temperature range: | -4 .. 194 °F |
| Selected liquid temperature: | 68 °F |
| Density: | 62.29 lb/ft³ |
| Electrical data: | |
| Motor standard: | NEMA |
| Motor type: | 132DA |
| IE Efficiency class: | NEMA Premium / IE3 60Hz |
| Rated power - P2: | 7.5 HP |
| Power (P2) required by pump: | 7.5 HP |
| Main frequency: | 60 Hz |





Company name:

Created by:

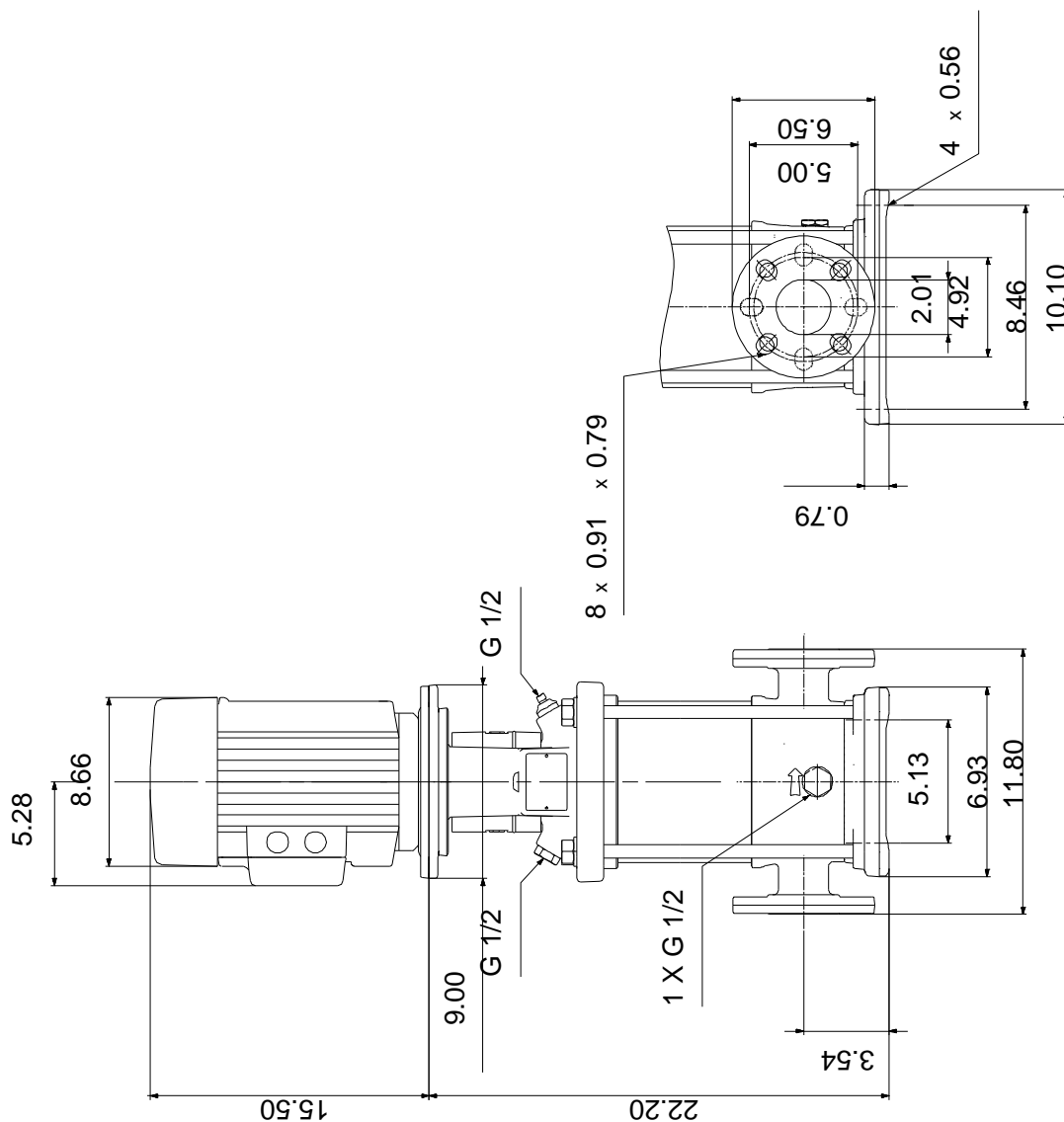
Phone:

Date:

4/17/2019

| Description | Value |
|--------------------------------|----------------------|
| Rated voltage: | 3 x 208-230YY/460Y V |
| Service factor: | 1.15 |
| Rated current: | 19,5-18,1/9,09 A |
| Starting current: | 1020-1480 % |
| Load current: | 22,4-20,8/10,4 A |
| Cos phi - power factor: | 0.89-0.86 |
| Rated speed: | 3490-3515 rpm |
| IE efficiency: | IE3 89,5% |
| Motor efficiency at full load: | 89.5 % |
| Motor efficiency at 3/4 load: | 89.7 % |
| Motor efficiency at 1/2 load: | 88.3 % |
| Number of poles: | 2 |
| Enclosure class (IEC 34-5): | 55 Dust/Jetting |
| Insulation class (IEC 85): | F |
| Motor protection: | PTC |
| Motor Number: | 85904392 |
| Controls: | |
| Frequency converter: | NONE |
| Others: | |
| Net weight: | 196 lb |
| Gross weight: | 212 lb |
| Shipping volume: | 8.26 ft ³ |
| Country of origin: | US |
| Custom tariff no.: | 8413.70.2040 |

97743225 CR 10-7A-GJ-A-V-HQQV 60 Hz



Note! All units are in [in] unless otherwise stated.
Disclaimer: This simplified dimensional drawing does not show all details.

97743225 CR 10-7A-GJ-A-V-HQQV 60 Hz

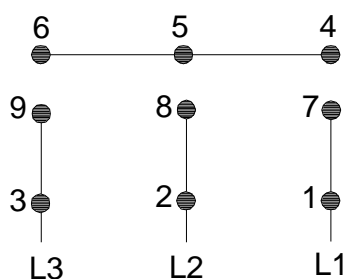


WARNING

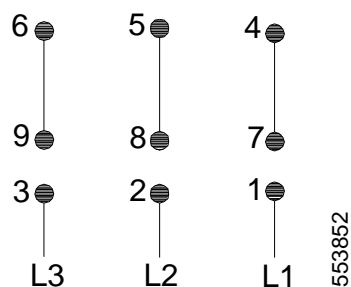
MOTOR MUST BE GROUNDED IN ACCORDANCE WITH THE NATIONAL ELECTRICAL CODE AND LOCAL CODES BY TRAINED PERSONNEL TO PREVENT SERIOUS ELECTRICAL SHOCKS.

TO SERVICE MOTOR, DISCONNECT POWER SOURCE FROM MOTOR AND ANY ACCESSORY DEVICES AND ALLOW MOTOR TO COME TO A COMPLETE STAND STILL.

LOW VOLTAGE 60Hz. 208-230V



HIGH VOLTAGE 60Hz: 460V 50Hz: 400V



INTERCHANGE ANY TWO LINE
WIRES TO REVERSE ROTATION

THERMOSTAT LEADS
(WHEN PROVIDED)

