

# CL-CC Series

## Gusher Series CL-CC General Service Industrial Pumps

**Design Features for a Wide Range of Industrial Services**

### **NEMA JPM Shaft Motor**

Commercially available motors eliminate need to stock “special” motors. Available in open drip-proof, total enclosed fan cooled and explosion-proof.

### **Renewable Shaft Sleeve**

Stainless steel shaft sleeve protects motor shaft from corrosion.

### **Cast Impeller**

### **Industrial Duty Casing**

Cast with generous wall sections, provides extended pump life on corrosive/erosive service. ANSI dimensional for ease of installation. ANSI Class 150 flanges are standard.

### **Casing Drain**

### **Close-Coupled**

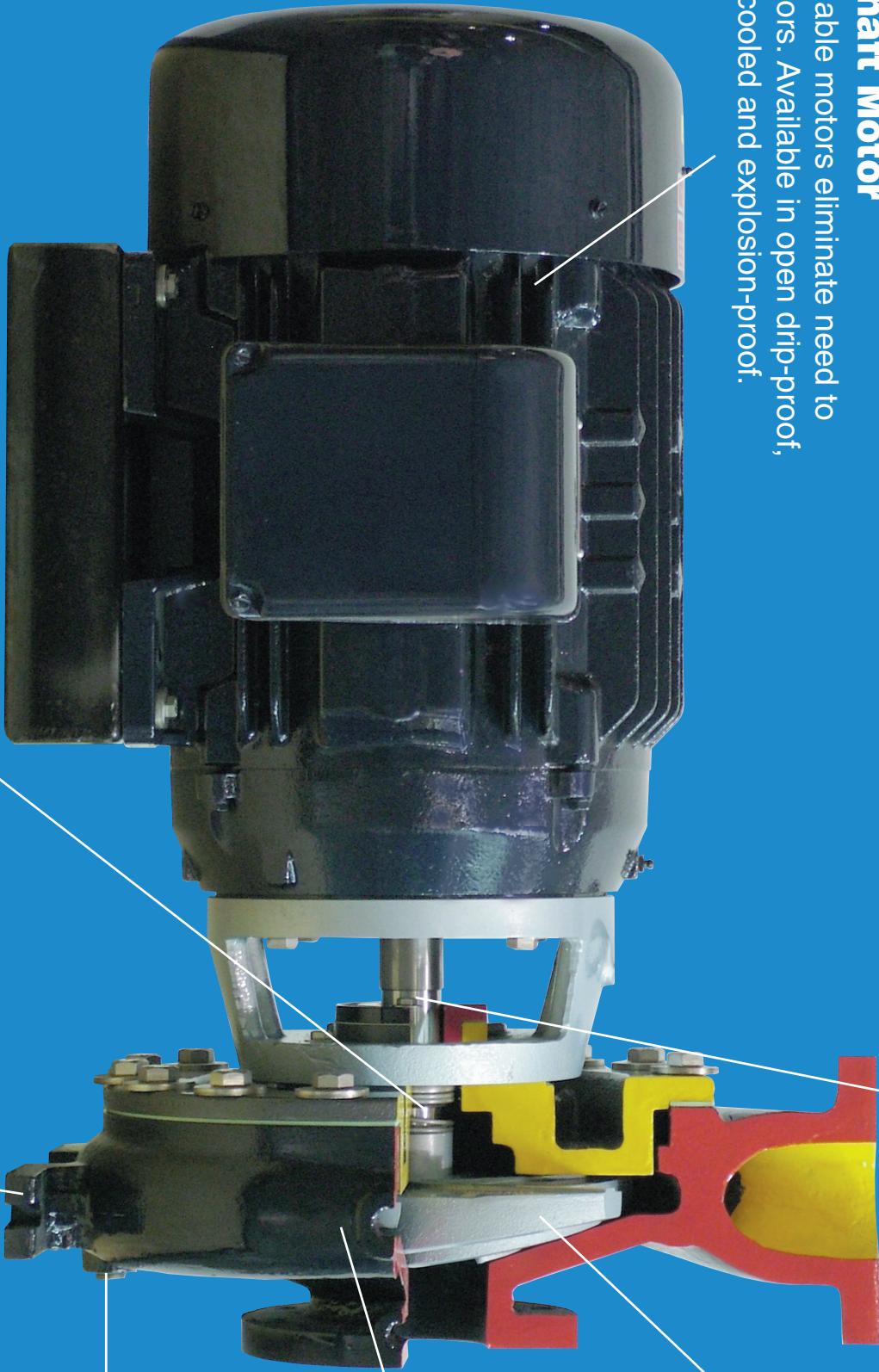
Design eliminates need to perform time consuming pump/motor alignment.

### **Single Inside Mechanical Seal**

Elastomeric bellows seal making it simple to install, easy to maintain.

### **Rigid Casing Feet**

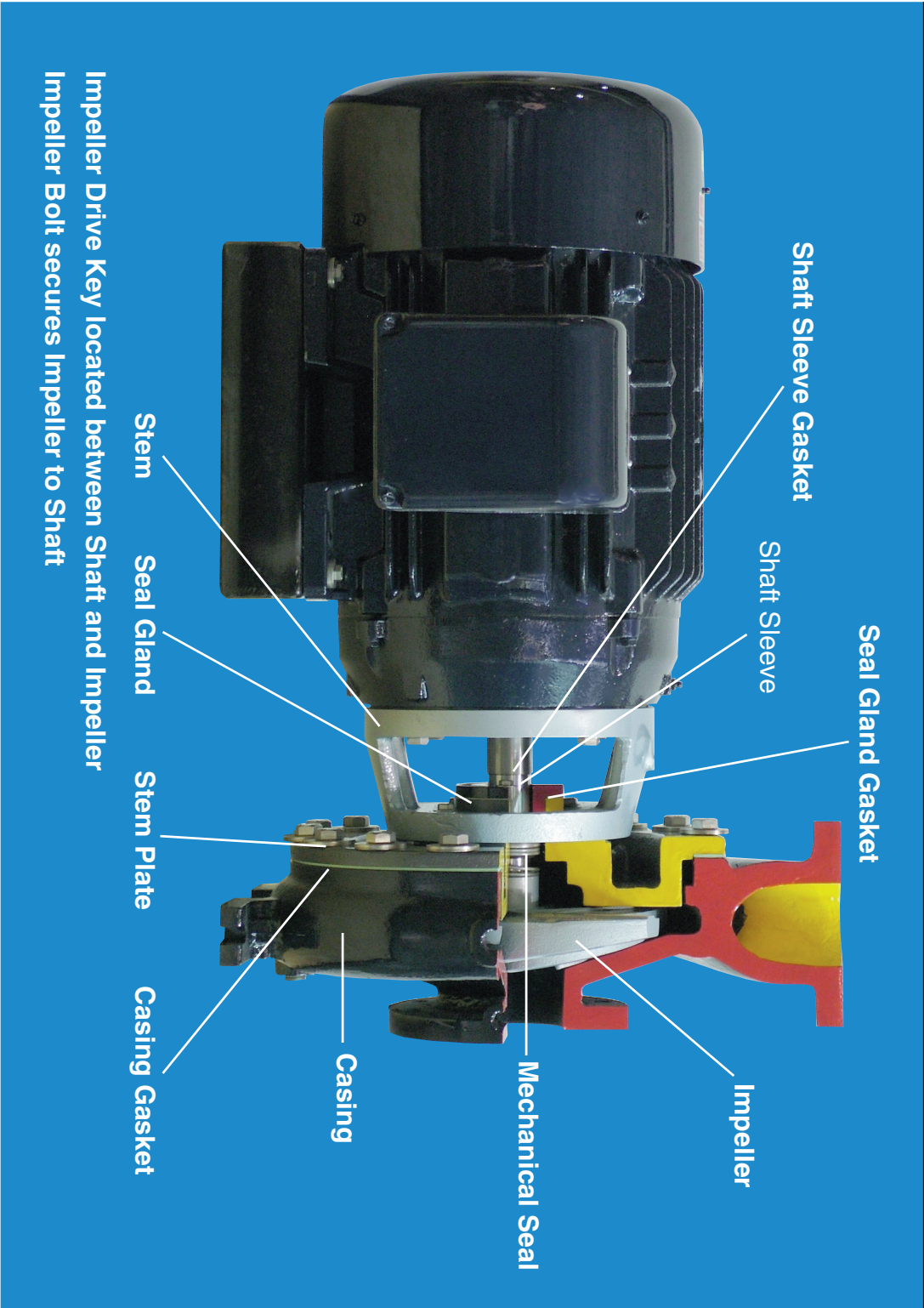
Reduces effect of pipe loads on pump performance. Facilitates back pull-out for ease of maintenance.





CL-CC Series Parts List

Pump Selection Curves



## Ordering Information

Order the Gusher CL-CC Series Pump to meet your needs by model name. The model name should be specified as follows:

Back Pull-out Design

Max Size Impeller

Closed-Coupled

Material (See Chart Below)

PCL

☐

X

☐

X

☐

SE

-

☐

CC

-

☐

4

-

☐

Center Line

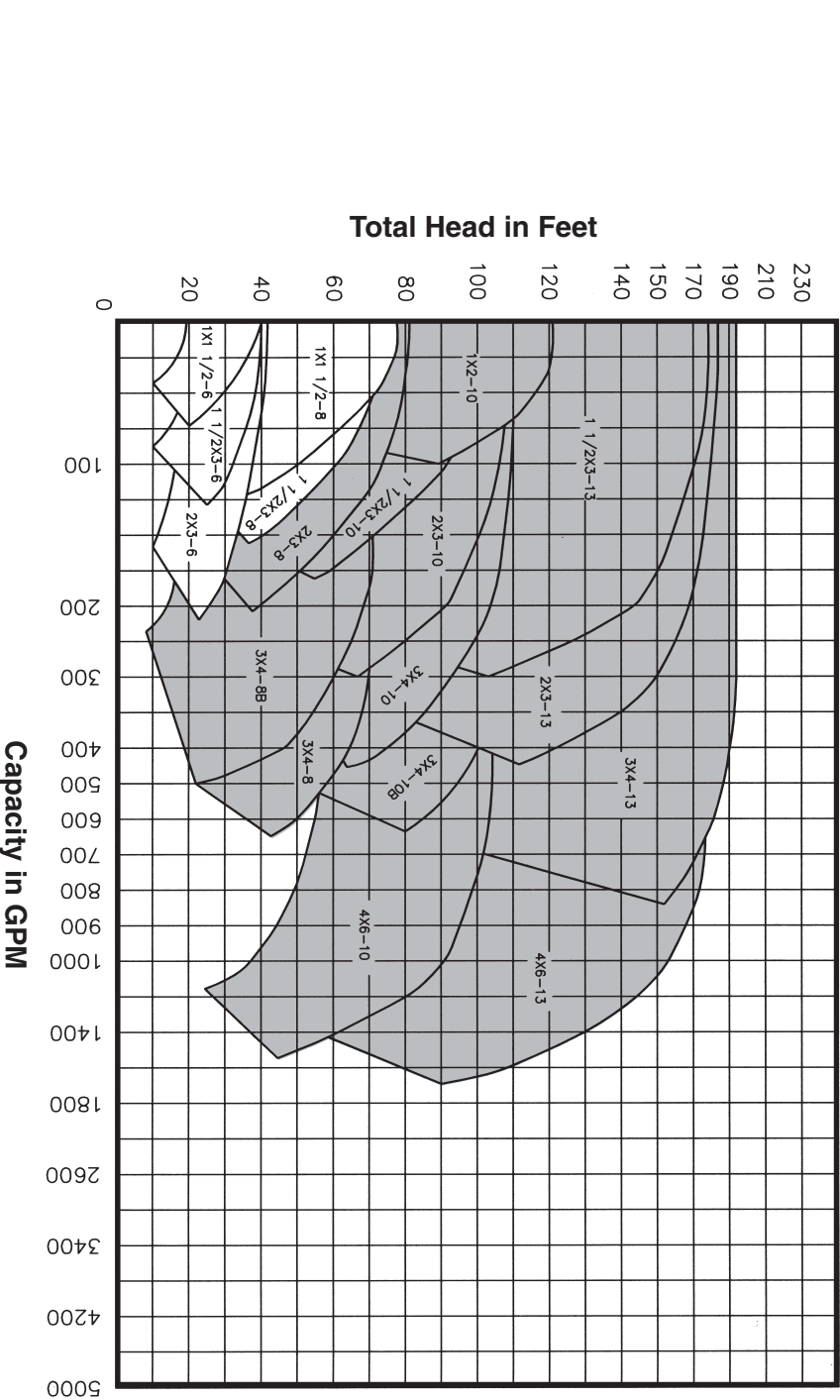
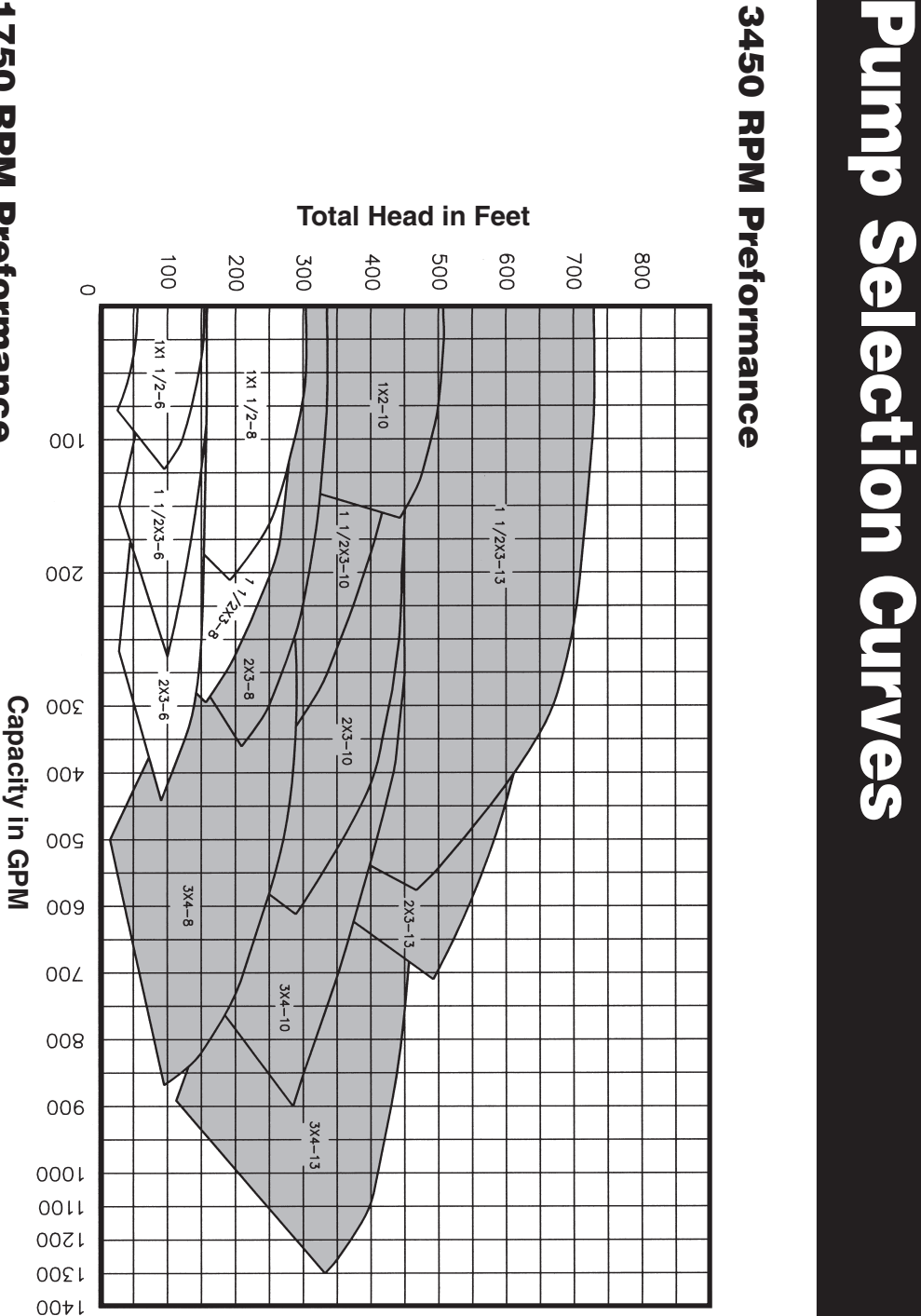
Discharge Size

Suction Size

Semi-enclosed Impeller

12 O'clock Discharge Position

Materials of Construction		
Material Designation	Type	Description
A	All Iron	Cast Iron Construction
B	Stainless Steel	316 Stainless Steel Wetted Parts
C	Stainless Steel Fitted	316 Stainless Steel Shaft and Impeller



# CL-CC Series

## General Service Industrial Pumps

- Capacities to 1600 GPM
- Heads to 700 feet
- Temperatures to 250° F (121° C)
- Pressures to 300 PSIG



## Performance Features For General Service

- Pump Reliability**
- Cast Stainless Steel & Iron Construction
- Foot Mounted Casing

## Ease of Maintenance

- Back Pull-Out Design
- NEMA JPM Shaft Motor
- Self-Setting Mechanical Seal

## Simple Installation

- Compact, Space Saving Close-Coupled Design
- No Pump/Motor Alignment Required
- ANSI Dimensional Casing

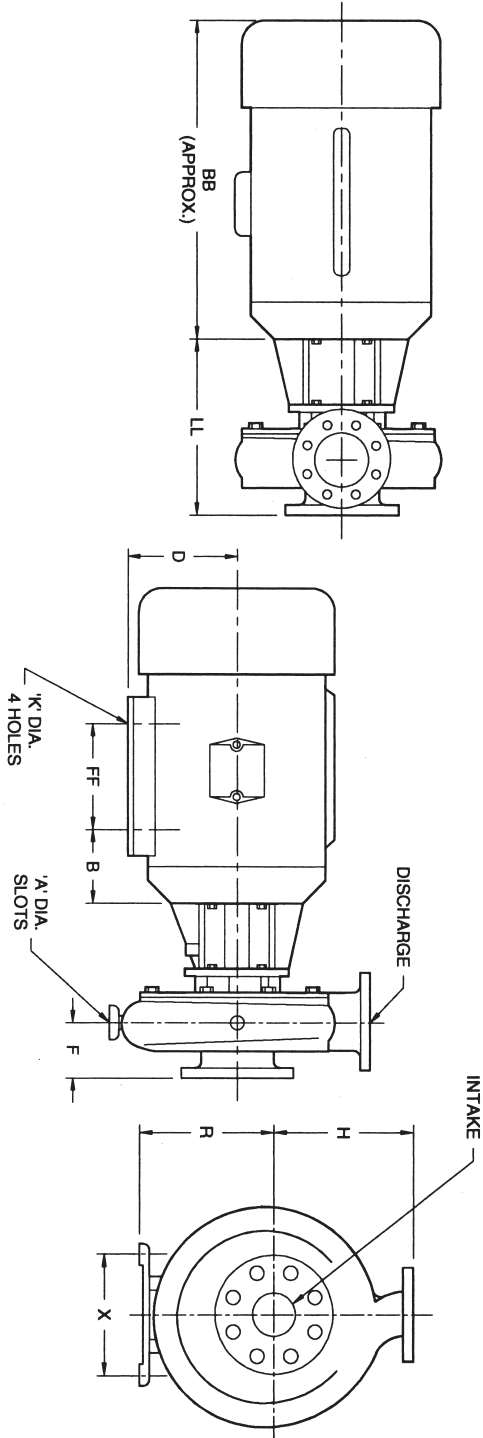
For general service pumping or industrial services, the CL-CC Series is a perfect reliable and economical solution. The close-coupled design and ANSI dimensional casing make installation extremely simple. The CL-CC Series is also easy to operate and maintain with the added benefit of substantially reduced maintenance costs.

## Services

Water Purification/Filtration  
(Reverse Osmosis, Ultra Filtration)  
Parts Cleaners/Washers  
Deionized Water  
Tank Transfer, Tank Cleaning  
Bottle Washing  
Waste Water  
Scrubbers  
Paint Systems  
OEM Skids  
Seal Water  
Condensate  
Boiler Circulation  
Cooling Water, Electronics Cooling  
Chillers  
Batch Processing

A complete range of **NEMA JPM Shaft motors** are available.

# Specifications



Model	H	F	X	R	LL	A	DISCH.	INTAKE
PCL-1 X 1 1/2-6SE	6.5	4	6	5.25	11.87	.62	1	1 1/2
PCL-1 X 1 1/2-8SE	6.5	4	6	5.25	11.56	.62	1	1 1/2
PCL-1 X 2-10SE	8.5	4	9.75	8.25	11.78	.62	1	2
PCL-1 1/2 X 3-6SE	6.5	4	6	5.25	11.88	.62	1 1/2	3
PCL-1 1/2 X 3-8SE	6.5	4	6	5.25	11.56	.62	1 1/2	3
PCL-1 1/2 X 3-10SE	8.5	4	9.75	8.25	11.78	.62	1 1/2	3
PCL-1 1/2 X 3-13SE	10.5	4	9.75	10	11.12	.62	1 1/2	3
PCL-2 X 3-6SE	6.5	4	6	5.25	11.25	.62	2	3
PCL-2 X 3-8SE	9.5	4	9.75	8.25	11.56	.62	2	3
PCL-2 X 3-10SE	9.5	4	9.75	8.25	11.78	.62	2	3
PCL-2 X 3-13SE	11.5	4	9.75	10	11.12	.62	2	3
PCL-3 X 4-8SE	11	4	9.75	8.25	11.56	.62	3	4
PCL3X4-8B-SE	11	4	9.75	8.25	11.56	.62	3	4
PCL-3 X 4-10-SE	11	4	9.75	8.25	11.5	.62	3	4
PCL-3 X 4-10B-SE	12.5	4	9.75	10	11.5	.62	3	4
PCL-3 X 4-13SE	12.5	4	9.75	10	11.75	.62	3	4
PCL-4 X 6-10SE	13.5	4	9.75	10	11.5	.62	4	6
PCL-4 X 6-13SE	13.5	4	9.75	10	11.75	.62	4	6
NEMA FR. SIZE								
	BB	D		FF	B	'K' DIA. HOLES		
143JP	10.62	3.5	-	4	2.87	.34		
145JP	11.62	3.5	-	5	2.87	.34		
182JP	12.68	4.5	-	4.5	3.5	.40		
184JP	13.68	4.5	-	5.5	3.5	.40		
213JP	15.37	5.25	-	5.5	4.5	.40		
215JP	16.87	5.25	-	7	4.5	.40		
254JP	19.5	6.25	-	8.25	4.75	.53		
256JP	21.25	6.25	-	10	4.75	.53		
284JP	21.56	7	-	9.5	4.75	.53		
286JP	23.06	7	-	11	4.75	.53		
324JP	23.93	8	-	10.5	5.25	.65		
326JP	25.43	8	-	12	5.25	.65		





A RUTHMAN COMPANY

**Gusher Pumps is a Division of  
Ruthman Companies  
Corporate Headquarters**

1212 Streng Street  
Cincinnati, OH 45233  
**Phone:** 513-559-1901  
**Fax:** 513-559-0035  
**Web:** www.ruthmancompanies.com

**Gusher Pumps of Dry Ridge**

22 Ruthman Drive  
Dry Ridge, KY 41035  
**Phone:** 859-824-5001  
**Fax:** 859-824-3011  
**Web:** www.gusher.com

**Gusher Pumps of Williamstown**

115 Industrial Drive  
Williamstown, KY 41097  
**Phone:** 859-824-3100  
**Fax:** 859-824-7248  
**Web:** www.gusher.com

**Gusher Pumps of Cincinnati**

1212 Streng Street  
Cincinnati, OH 45233  
**Phone:** 513-559-1901  
**Fax:** 513-559-0035  
**Web:** www.gusher.com

**Gusher Pumps of California**

8226 Salt Lake Avenue  
Cudahy, CA 90201  
**Phone:** 323-773-0847  
**Fax:** 323-773-0958  
**Email:** gusherca@aol.com

**Gusher Pumps of New Castle**

403 North Ninth Street  
New Castle, IN 47362  
**Phone:** 765-529-5624  
**Fax:** 765-521-0008  
**Email:** gusherpump@insightb.com

**BSM Pump Corp.**

180 Frenchtown Road  
North Kingstown, RI 02852  
**Phone:** 401-471-6350  
**Fax:** 401-471-6370  
**Web:** www.bsmump.com

**Nagle Pumps**

1249 Center Avenue  
Chicago Heights, IL 60411  
**Phone:** 708-754-2940  
**Fax:** 708-754-2944  
**Web:** www.naglepumps.com

**Wagner Processing – Bay Area**

23510 Bernhardt Street  
Hayward, CA 94545  
**Phone:** 510-786-3929  
**Fax:** 510-786-3722  
**Web:** www.wagnerprocess.com

**Ruthman...  
Another Word for Innovation**



the first vertical ball bearing sealless centrifugal pump, Ruthman Pump and Engineering furthered the design on a unit with a one piece motor driven shaft. The pump was called “Gusher”, giving birth to the trade name Gusher Pumps, and the coining of the term “coolant pump”.

Wanting to carry on the tradition of quality and reliability started by his father, Thomas R. Ruthman joined the company in 1949. In the early 1990’s Thomas R. Ruthman’s son, Thomas G. Ruthman joined the company, continuing this same tradition. Maintaining the reputation of Gusher Pumps by innovation and customer service, the company has grown to service companies worldwide.

It began in 1913, servicing mechanical components of the steamboats on the Ohio River.

The company founder, Alois Ruthman, was a man of vision and saw part of the future of the company was in the development of a reliable industrial pump.

In 1924, with the conception of

**Wagner Processing – Central Valley**

3675 N. Wilcox Street #C  
Stockton, CA 95215  
**Phone:** 209-931-0100  
**Fax:** 209-931-7910  
**Web:** www.wagnerprocess.com

**Great Lakes Pump & Supply Co.**

1075 Naughton  
Troy, MI 48083  
**Phone:** 248-528-9100  
**Fax:** 248-528-9015  
**Web:** www.greatlakespump.com

**Process Systems, Inc.**

**Michigan, Main Headquarters**  
23633 Pinewood  
Warren, MI 48091  
**Phone:** 586-757-5711  
**Fax:** 586-758-6996  
**Web:** www.INFO@psia4pumps.com

**Indiana**

485 N State Route 341 South  
Mellott, IN 47958  
**Phone:** 765-295-2206  
**Fax:** 765-295-2243  
**Web:** www.process-systems-inc.com

**Worldwide:**

**Ruthmann Pumpen**

Nortberger Strabe 60  
Eschweiler Germany D-52249  
**Phone:** +49 (0) 2403 5595 0  
**Fax:** +49 (0) 2403 5595 20  
**Web:** www.ruthmannpumpen.de

**Birmingham Pump**

Unit 7 Network Park  
Duddeston Mill Road  
Salleley, Birmingham England B81AU  
**Phone:** +44 (0) 121 503 3000  
**Fax:** +44 (0) 121 503 3002  
**Web:** www.birminghampumps.co.uk

**Guan Shen Industrial Pumps  
(Shanghai) Company**

**广申工业泵（上海）有限公司**

**Gusher Pumps (Shanghai) Co., Ltd.**  
Building D, Room 416  
No. 188 East Jiaqwan Road  
Shanghai, 200081  
P.R. CHINA

上海市东江湾路 188 号 D 栋 416 室

**Phone:** 86-21-33872056  
**Phone:** 86-21-33872058  
**Fax:** 86-21-33872057

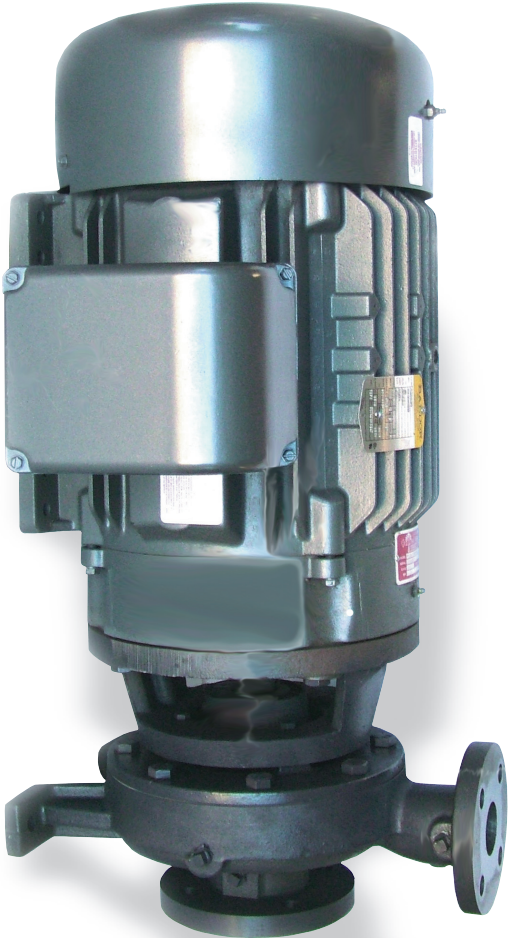
电话: 86-21-33872056  
86-21-33872058  
传真: 86-21-33872057



A RUTHMAN COMPANY

**General Service  
Industrial  
Pumps**

**CL-CC Series**



**RUTHMAN  
COMPANIES**



**RUTHMAN  
COMPANIES**