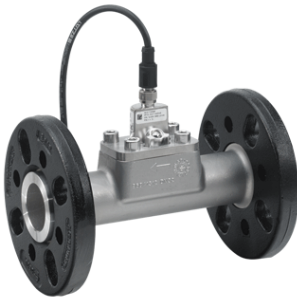


PROJECT:	_____	UNIT TAG:	_____	QUANTITY:	_____
	_____	TYPE OF SERVICE:	_____		_____
REPRESENTATIVE:	_____	SUBMITTED BY:	_____	DATE:	_____
ENGINEER:	_____	APPROVED BY:	_____	DATE:	_____
CONTRACTOR:	_____	ORDER NO.:	_____	DATE:	_____

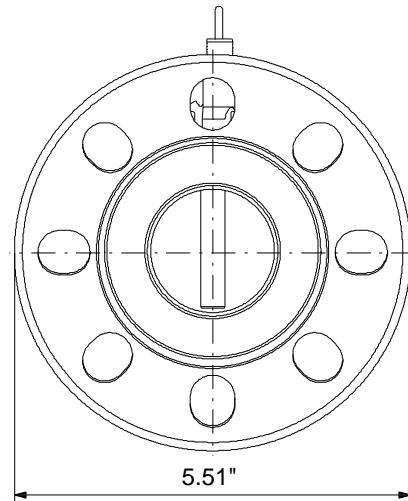
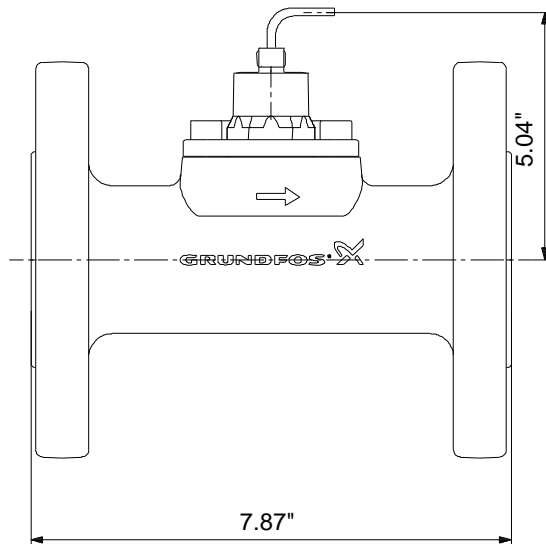
VFI/-1.3-25m/1/C/M5.00-X/VG6/S

Accessories



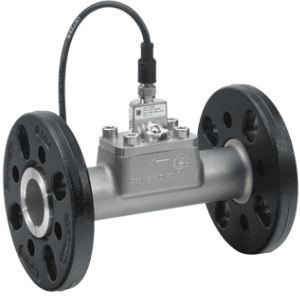
Product photo could vary from the actual product

Conditions of Service	Pump Data	Motor Data
Flow: _____	Maximum operating pressure: 435.11 psi	Enclosure class: IP67
Head: _____	Liquid temperature range: -22 .. 248 °F	
Efficiency: _____	Maximum ambient temperature: 158 °F	
Liquid: _____	Type of connection: Flange	
Temperature: _____	Product number: 97686142	
NPSH required: _____		
Viscosity: _____		
Specific Gravity: _____		



**Materials:**

Material: Stainless steel

Count	Description
1	<p><b>VFI-1.3-25m/1/C/M5.00-X/VG6/S</b></p>  <p>Product photo could vary from the actual product</p> <p>Product No.: <a href="#">97686142</a></p> <p>The VFI is the industrial version (4-20 mA output) of the Grundfos vortex flow meter range.</p> <p>The VFI is based on the principle of vortex shedding behind a bluff body.</p> <p>The VFI has no moving parts and is built into a stainless steel pipe.</p> <p>The rugged design allows the VFI to be used in a wide range of applications as a cost-effective and accurate flow transmitter.</p> <p>The VFI is delivered with a Cast iron, PN25/40 DN18/25/32, B16.5 1 1/4", Flange connection.</p> <p><b>Controls:</b></p> <p>Outputs: 4-20 mA, 2 wires</p> <p><b>Liquid:</b></p> <p>Liquid temperature range: -22 .. 248 °F</p> <p><b>Technical:</b></p> <p>Approvals and markings: CE,CCSAUS</p> <p>Measuring type: VORTEX</p> <p><b>Materials:</b></p> <p>Material: Stainless steel</p> <p>Connection mat.: Cast iron</p> <p><b>Installation:</b></p> <p>Range of ambient temperature: -67 .. 158 °F</p> <p>Maximum operating pressure: 435.11 psi</p> <p>Type of connection: Flange</p> <p>Pipework connection: PN25/40 DN18/25/32, B16.5 1 1/4"</p> <p>Range of flow measurement: 5.5 .. 110 US gpm</p>

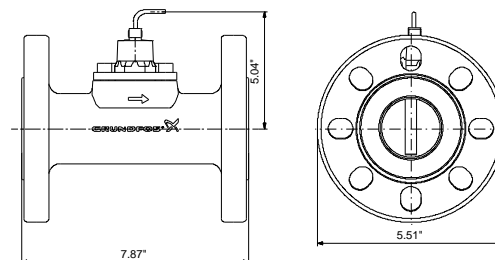


Company name:  
Created by:  
Phone:

Date: 8/19/2019

Count	Description
	<b>Electrical data:</b> Enclosure class (IEC 34-5): IP67 Length of cable: 16.4 ft Udc: 30 V 12 V  <b>Others:</b> Net weight: 9.94 lb Gross weight: 14.1 lb

Description	Value
<b>General information:</b>	
Product name:	VFI/-1.3-25m/1/C/M5.00-X/VG 6/S
Product No.:	97686142
EAN:	5710621490122
	5710621490122
<b>Technical:</b>	
Flow range:	1.3-25 m³/h
Approvals and markings:	CE,CCSAUS
Measuring type:	VORTEX
<b>Materials:</b>	
Material:	Stainless steel
Connection mat.:	Cast iron
<b>Installation:</b>	
Range of ambient temperature:	-67 .. 158 °F
Maximum operating pressure:	435.11 psi
Type of connection:	Flange
Pipework connection:	PN25/40 DN18/25/32, B16.5 1¼"
Range of flow measurement:	5.5 .. 110 US gpm
<b>Liquid:</b>	
Liquid temperature range:	-22 .. 248 °F
<b>Electrical data:</b>	
Enclosure class (IEC 34-5):	IP67
Length of cable:	16.4 ft
Udc:	30 V
	12 V
<b>Controls:</b>	
4-20 mA control:	YES
Outputs:	4-20 mA, 2 wires
<b>Others:</b>	
Brand:	GRUNDFOS DIRECT SENSORS
Net weight:	9.94 lb
Gross weight:	14.1 lb

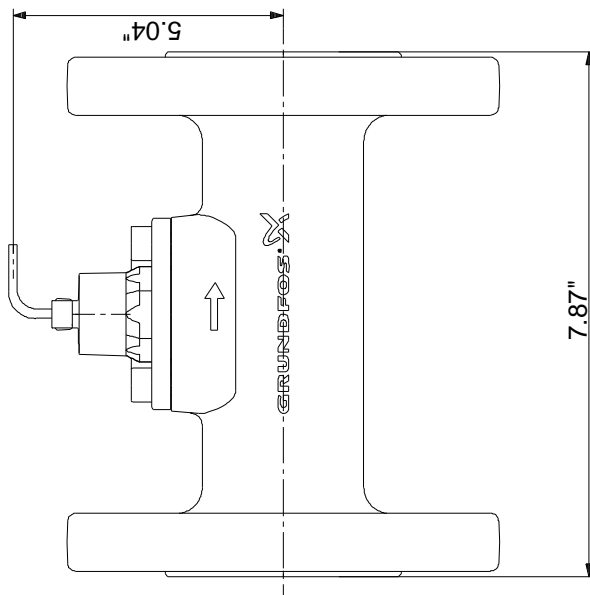
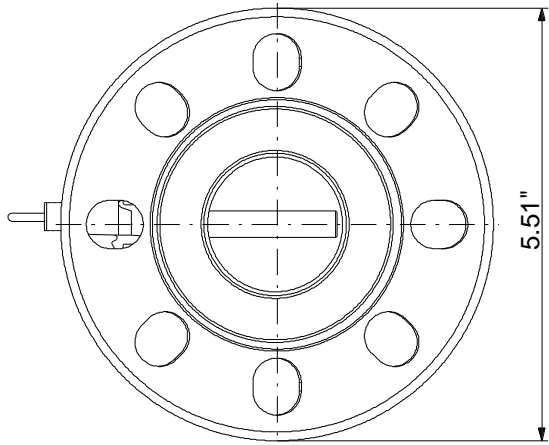




Company name:  
Created by:  
Phone:

Date: 8/19/2019

**97686142 VFI/-1.3-25m/1/C/M5.00-X/VG6/S 60 Hz**



Note! All units are in [in] unless otherwise stated.  
Disclaimer: This simplified dimensional drawing does not show all details.