

| | | |
|--------------|-------------|------------|
| Customer | Date | 20.03.2020 |
| Contact | Project | |
| Phone number | Project no. | |
| Email | | |

46SV50GP4C60N

Operating data

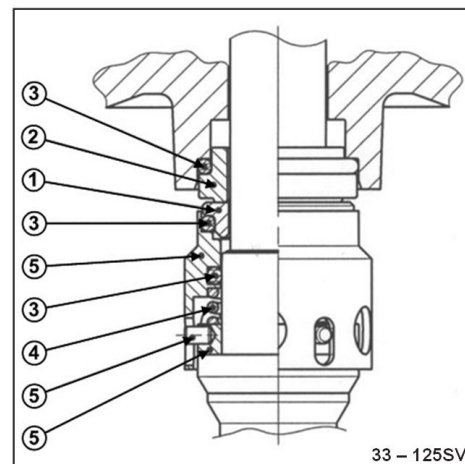
| | | | |
|---------------------------|-------------------|---------------------------|-----------------------------|
| Pump type | Multi-Stage Pumps | Fluid | Water |
| No. of pumps / Reserve | 1 / 0 | Operating temperature t A | °F 39.2 |
| Nominal flow | US g.p.m. 0 | pH-value at t A | 7 |
| Nominal head | ft 0 | Density at t A | lb/ft ³ 62.4 |
| Static head | ft 0 | Kin. viscosity at t A | ft ² /s 1.689E-5 |
| Inlet pressure | psi 0 | Vapor pressure at t A | psi 14.5 |
| Environmental temperature | °F 68 | Solids | 0 |
| Available system NPSH | ft 0 | Altitude | ft 0 |

Pump data

| | | | |
|-----------------------|-------------------------|------------------|--------------------|
| Make | Goulds Water Technology | Nominal | US g.p.m. () |
| Speed | rpm 3500 | Flow | Max- US g.p.m. 317 |
| No. of stages | 1 | | Min- US g.p.m. |
| Max. working pressure | psi 270.2 | Nominal | ft |
| Head H(Q=0) | ft 620 | Head | at Qmax ft 350.1 |
| Weight | lb 393 | | at Qmin ft 623.3 |
| Efficiency | % | Shaft power | hp () |
| NPSH 3% | ft | Max. shaft power | hp 43 |

Shaft Seal

| | |
|----------------------|---------------------------------|
| Single Seal | Xylem |
| Mechanical Seals | |
| 1 - Rotating Face | Carbon |
| 2 - Stationary Face | Silicon Carbide Graphite Filled |
| 3 - Elastomers | Viton |
| 4 - Spring | 316SS |
| 5 - Metal Components | 316SS |



Motor data

| | | | | | | | |
|-----------------|-------------------------------|------------------|-------|----------------------|----------|------------------|----------|
| Manufacturer | Baldor | Electric voltage | 460 V | Speed | 3450 rpm | Insulation class | F |
| Specific design | 3ph TPE | | | Frame size | 284TC | Colour | RAL 5010 |
| Type | 230/460V 284TC (V17A32F5BL2S) | | | Degree of protection | TEPE | | |
| Rated power | 40 hp | Electric current | 45 A | | | | |

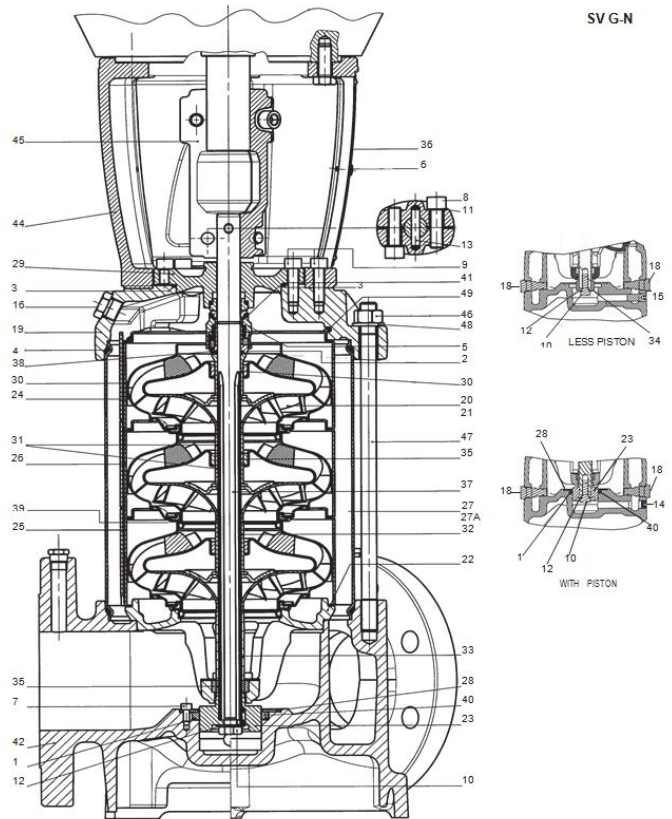
Remarks:

| | |
|--------------|-----------------|
| Customer | Date 20.03.2020 |
| Contact | Project |
| Phone number | Project no. |
| Email | |

46SV50GP4C60N

Pump Materials

| | |
|---------------------------------------|---------------------------------------|
| 1 - O-Ring, Piston Seal | Viton (std) EPDM (opt) |
| 2 - O-Ring, Mechanical Seal Sleeve | Viton (std) EPDM (opt) |
| 3 - O-Ring, Seal housing | Viton (std) EPDM (opt) |
| 4 - O-Ring, Sleeve | Viton (std) EPDM (opt) |
| 5 - Mechanical Seal | Refer Mechanical Seals |
| 5A - Cartridge Seal | Refer Mechanical Seals |
| 6 - Screw, Guard | Stainless Steel (A193-304) |
| 7 - Screw, Piston Holding Disc | Stainless Steel (A193-316) |
| 8 - Screw, Coupling | Zinc Plated Steel (B633) |
| 9 - Screw, MA and Seal Housing | Zinc Plated Steel (B633) |
| 10 - Screw, Impeller | Stainless Steel (A193-316) |
| 11 - Washer, Coupling | Carbon Steel (A108) |
| 12 - Washer, Impeller | Stainless Steel (A193-316) |
| 13 - Pin, Coupling | Carbon Steel (A108) |
| 14 - Plug, with Piston | Stainless Steel (A193-316) |
| 15 - Plug, without Piston | Stainless Steel (A193-316) |
| 16 - Plug, Fill | Stainless Steel/O-Ring (A193-316) |
| 17 - Plug, Vent | Stainless Steel/O-Ring (A193-316) |
| 18 - Plug, Drain | Stainless Steel/O-Ring (A193-316) |
| 19 - Pump Head | Cast Iron (A48 Class 35) |
| 20 - Impeller, Full Diameter | Stainless Steel (A193-316L) |
| 21 - Impeller, Reduced Diameter | Stainless Steel (A193-316L) |
| 22 - Lower Bearing Assembly | SS/Cast Iron (A193-316L/A48 Class 35) |
| 23 - Piston | Duplex SS (A182-F51) |
| 24 - Diffuser, Final | Stainless Steel (A193-316L) |
| 25 - Diffuser with Carbon Bushing | Stainless Steel (A193-316L) |
| 26 - Diffuser with Tungsten Bushing | Stainless Steel (A193-316L) |
| 27 - Outer Sleeve, 25 Bar | Stainless Steel (A193-316L) |
| 27A - Outer Sleeve, 40 Bar | Stainless Steel (A193-316L) |
| 28 - Holding Disc, Piston Seal | Stainless Steel (A193-316L) |
| 29 - Seal Housing | Cast Iron (A48 Class 35) |
| 30 - Spacer, Impeller Final | Stainless Steel (A193-316) |
| 31 - Spacer, Shaft Bushing | Stainless Steel (A193-316) |
| 32 - Spacer, Impeller | Stainless Steel (A193-316) |
| 33 - Spacer, Impeller Lower (66-92SV) | Stainless Steel (A193-316) |
| 34 - Bushing, Non-Piston | Stainless Steel (A193-316) |
| 35 - Tungsten Carbide Bushing | Tungsten carbide |
| 36 - Coupling Guard | Stainless Steel (A193-304) |
| 37 - Shaft | Duplex SS (A182-F51) |
| 38 - Mechanical Seal Shaft Sleeve | Stainless Steel (A193-316) |
| 39 - Wear Ring, Impeller | PPS Glass Filled |
| 40 - Piston Seal | Impregnated Carbon |
| 41 - Stop Ring, Impeller | Stainless Steel (A193-316) |
| 42 - Pump Body | Cast Iron (A48 Class 35) |
| 43 - Motor Adapter Plate | Cast Iron (A48 Class 25) |



Remarks:

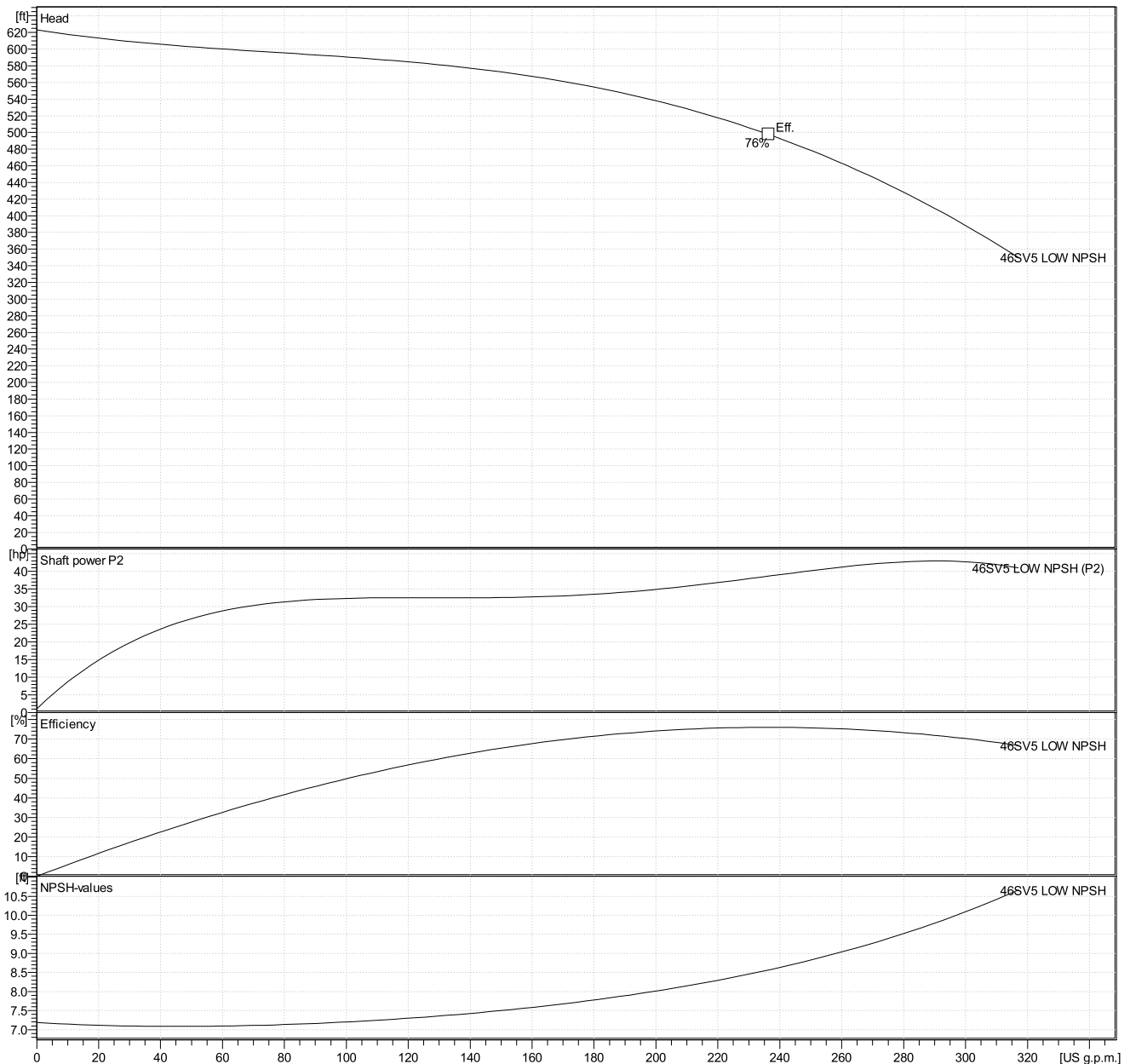
| | | |
|--------------|-------------|------------|
| Customer | Date | 20.03.2020 |
| Contact | Project | |
| Phone number | Project no. | |
| Email | | |

46SV50GP4C60N

Hydraulic Data

| Operating Data Specification | | Hydraulic data (duty point) | | Impeller design | |
|------------------------------|-------------|-----------------------------|--|-----------------|----------|
| Flow | 0 US g.p.m. | Flow | | Impeller R | " |
| Head | 0 ft | Head | | Frequency | 60 Hz |
| Static head | 0 ft | | | Speed | 3500 rpm |

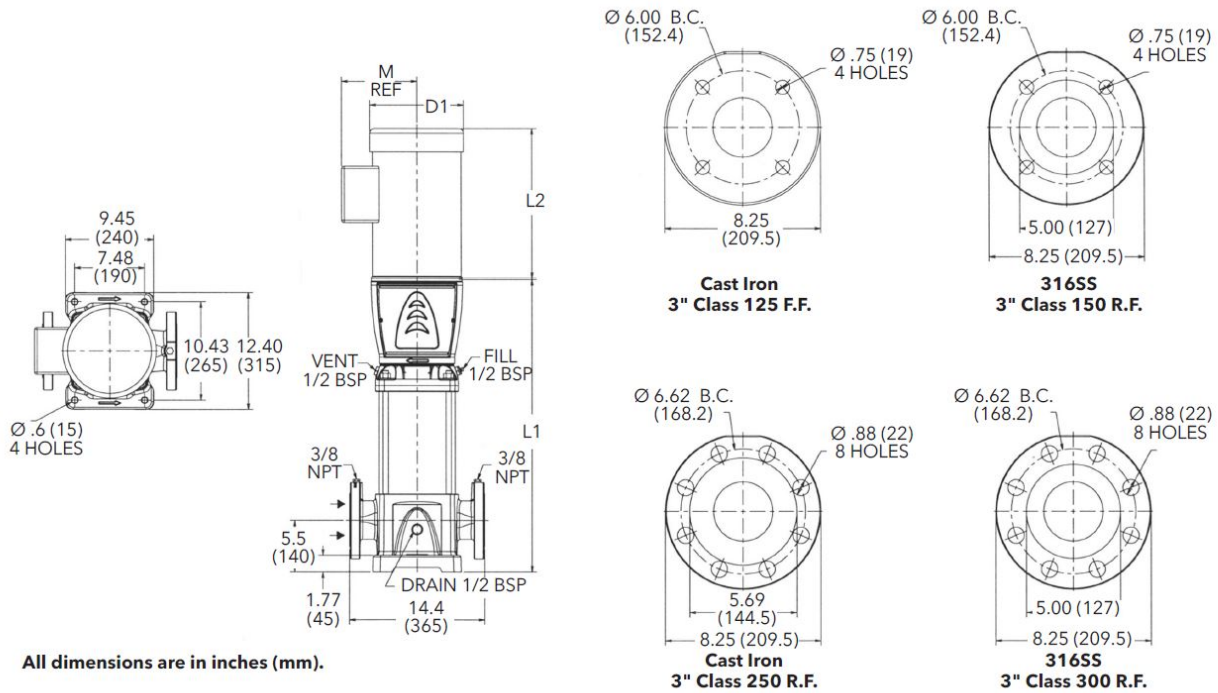
Power data referred to:
 Water [100%] ; 39.2°F; 62.4lb/ft³; 1.69E-5ft²/s
 Performance according to ISO 9906 - Annex A



| | | |
|--------------|-------------|------------|
| Customer | Date | 20.03.2020 |
| Contact | Project | |
| Phone number | Project no. | |
| Email | | |

46SV50GP4C60N

Drawing



Dimensions inch

| | | | | | | |
|------------|----------------------------------|--|--|--|--|--------------------|
| D1 max | 17 ³ / ₈ | | | | | Weight 392.5 lb |
| D2 | 13 ³ / ₈ | | | | | |
| L1 | 35 ⁷ / ₁₆ | | | | | |
| L2 | 27 ¹³ / ₁₆ | | | | | |
| M.Ref | 14 ¹ / ₈ | | | | | |
| NEMA Frame | 324-6TSC | | | | | |