

PROJECT: _____	UNIT TAG: _____	QUANTITY: _____
REPRESENTATIVE: _____	TYPE OF SERVICE: _____	DATE: _____
ENGINEER: _____	SUBMITTED BY: _____	DATE: _____
CONTRACTOR: _____	APPROVED BY: _____	DATE: _____
	ORDER NO.: _____	DATE: _____

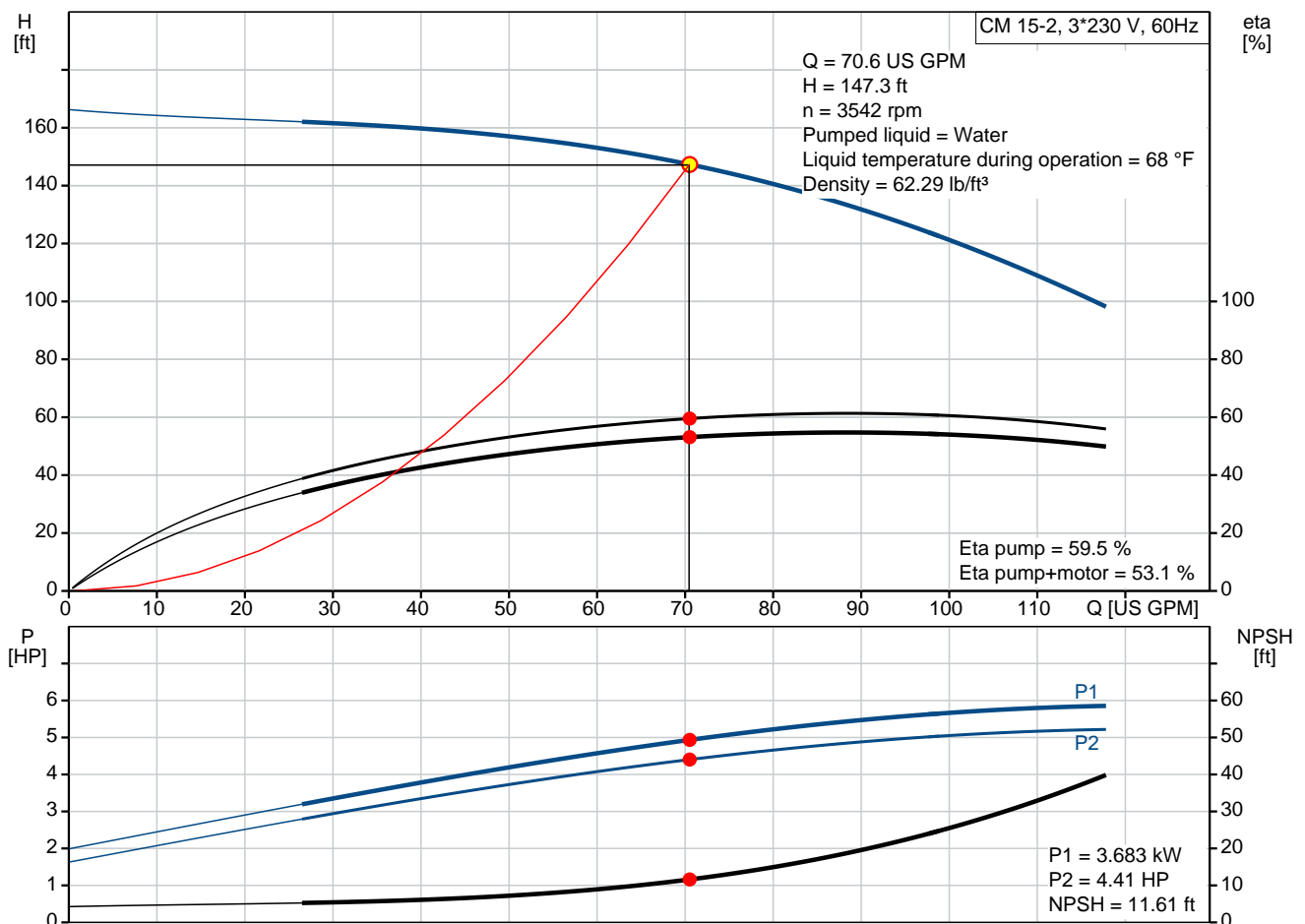
### CM 15-2 A-S-I-V-AQQV E-A-A-N

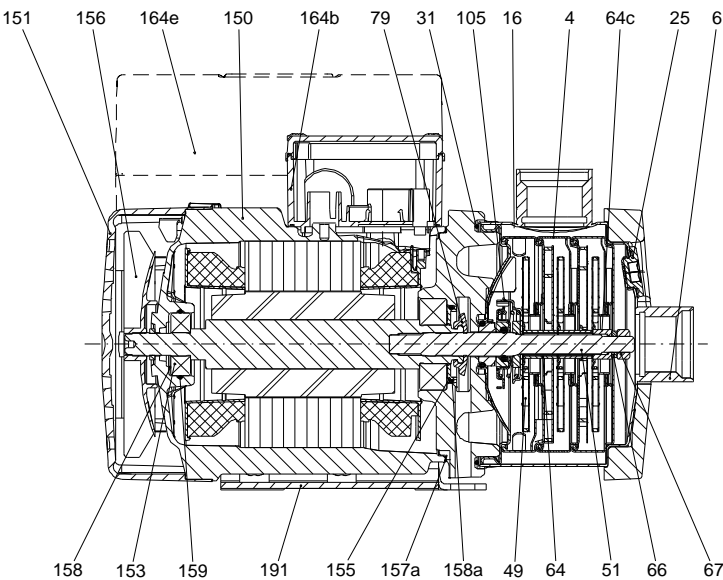
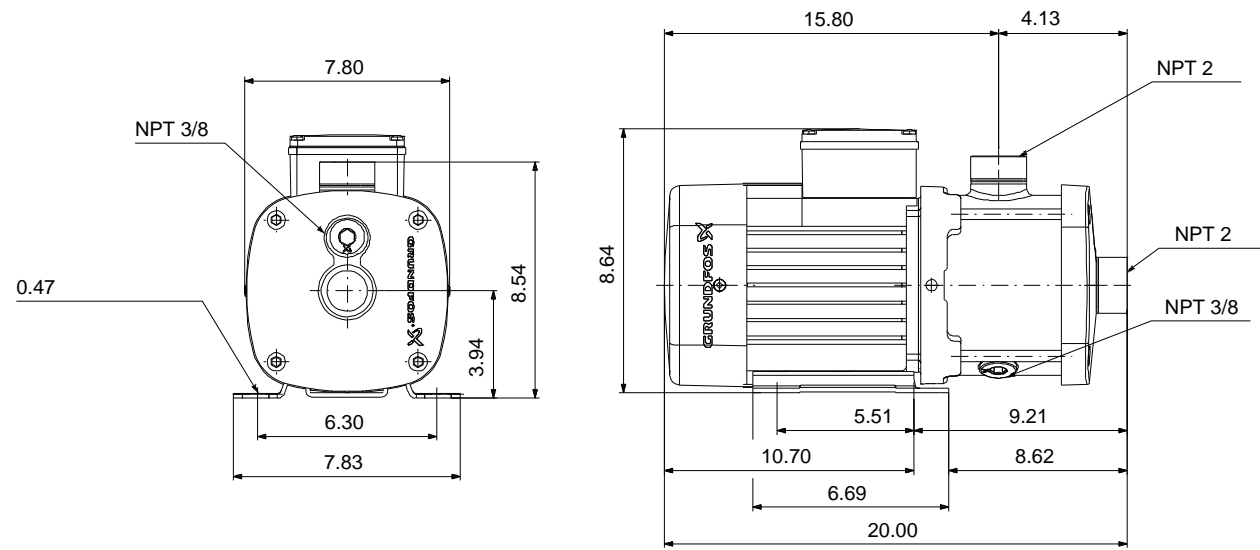


CM are reliable, quiet and compact horizontal end-suction pumps. The modular pump design makes it easy to make customised solutions. The CM pumps are available in cast iron and stainless steel

Note! Product picture may differ from actual product

Conditions of Service		Pump Data		Motor Data	
Flow:	70.6 US GPM	Max pressure at stated temp:	232 psi / 194 °F	Mains frequency:	60 Hz
Head:	147.3 ft	Liquid temperature range:	-4 .. 248 °F	Enclosure class:	IP55
Efficiency:	53.1 %	Maximum ambient temperature:	131 °F		
Liquid:	Water	Shaft seal:	AQQV		
Temperature:	68 °F	Product number:	96946009		
NPSH required:	11.61 ft				
Viscosity:	_____				
Specific Gravity:	1.000				



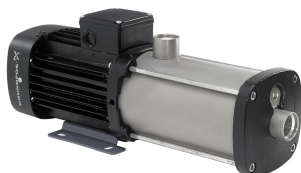


**Materials:**  
Pump housing: Stainless steel  
AISI 304  
Impeller: Stainless steel  
AISI 304  
EN 1.4301  
Material code: I  
Code for rubber: V

165x100

**Qty. Description**

1 CM 15-2 A-S-I-V-AQQV E-A-A-N



Note! Product picture may differ from actual product

Product No.: [96946009](#)

Compact, reliable, horizontal, multistage, end-suction centrifugal pump with axial suction port and radial discharge port. Pump materials in contact with the liquid are in stainless steel. The mechanical shaft seal is a special designed, unbalanced O-ring seal. Pipework connection is via internal NPT pipe threads.

The pump is fitted with a 3-phase, foot-mounted, fan-cooled asynchronous motor.

**Controls:**

Frequency converter: NONE

**Liquid:**

Pumped liquid: Water  
Liquid temperature range: -4 .. 248 °F  
Selected liquid temperature: 68 °F  
Density: 62.29 lb/ft³

**Technical:**

Pump speed on which pump data are based: 3480 rpm  
Actual calculated flow: 70.6 US GPM  
Rated flow: 89.8 US GPM  
Resulting head of the pump: 147.3 ft  
Rated head: 126.7 ft  
Code for shaft seal: AQQV  
Curve tolerance: ISO9906:2012 3B

**Materials:**

Pump housing: Stainless steel  
EN 1.4301  
AISI 304  
Impeller: Stainless steel  
EN 1.4301  
AISI 304

**Installation:**

Range of ambient temperature: -4 .. 131 °F  
Maximum operating pressure: 232.06 psi  
Max pressure at stated temp: 232 psi / 194 °F  
145 psi / 250 °F  
Type of connection: NPT(F)  
Size of inlet connection: 2 inch  
Size of outlet connection: 2 inch  
Outlet position: 12

**Electrical data:**

Motor standard: NEMA  
Frame size: 100B



Company name:

Created by:

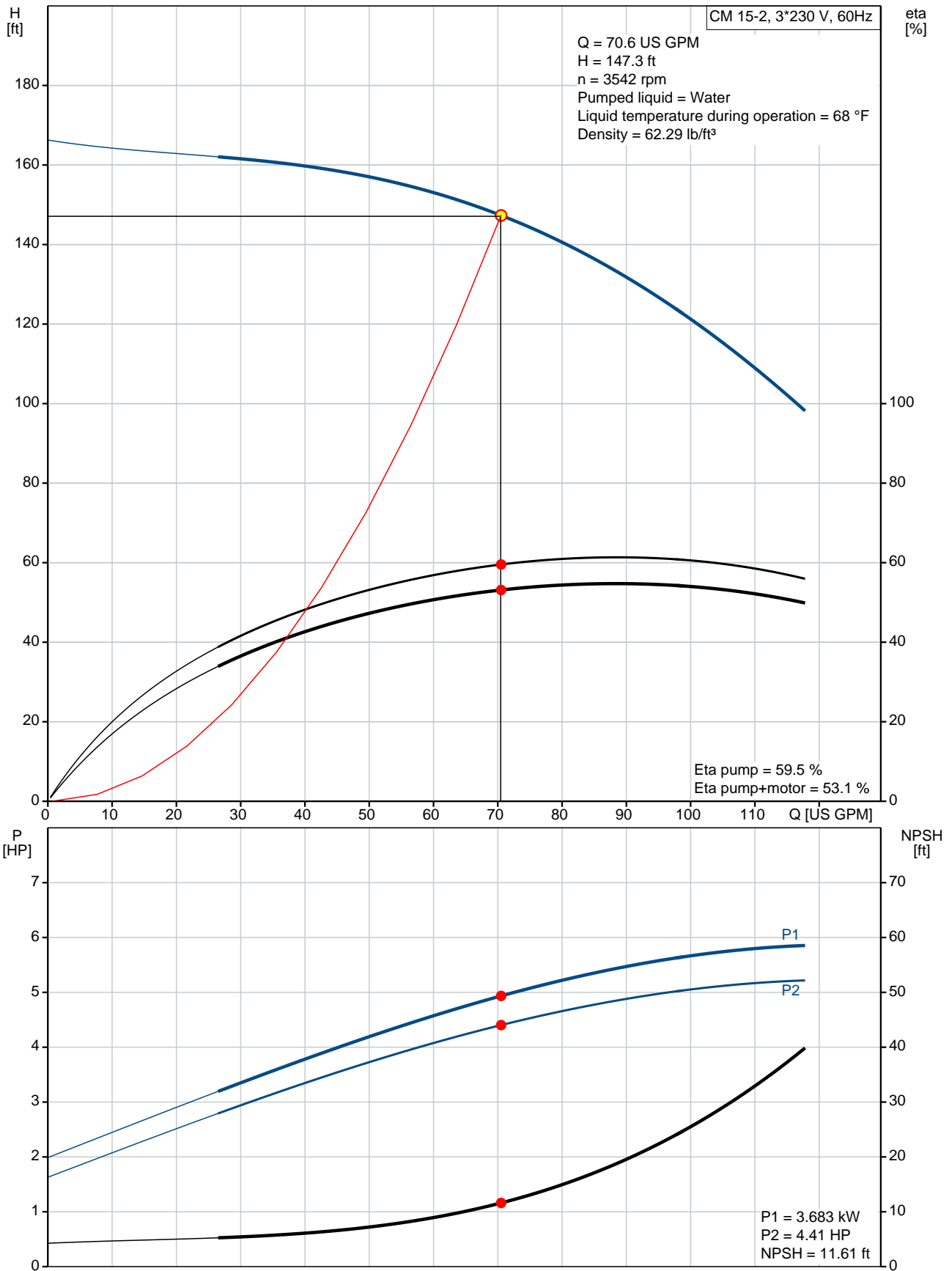
Phone:

Date:

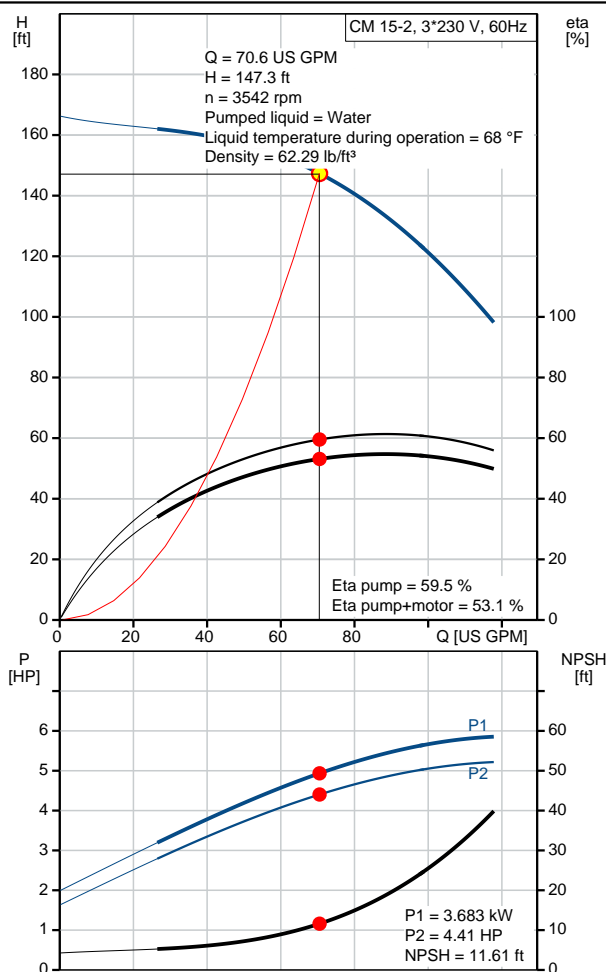
31/03/2020

Qty.	Description
	<p>IE efficiency class: IE3 / NEMA Premium</p> <p>Rated power - P2: 5.36 HP</p> <p>Mains frequency: 60 Hz</p> <p>Suitable for 50/60 Hz: N</p> <p>Phases: 3</p> <p>Rated voltage: 208-230YY/440-480Y V</p> <p>Service factor: 1.00</p> <p>Rated current: 14,8-14,2/7,2-7,0 A</p> <p>Rated speed: 3520-3530 rpm</p> <p>Enclosure class (IEC 34-5): IP55</p> <p>Insulation class (IEC 85): F</p> <p>Built-in motor protection: NONE</p> <p><b>Others:</b></p> <p>Terminal box position: 12</p> <p>Minimum efficiency index, MEI <math>\eta_{\%}</math>: 0.59</p> <p>Net weight: 77.5 lb</p> <p>Gross weight: 83 lb</p> <p>Approvals: CE,CULUS,WRAS,ACS,TR,EAC,CURUS</p> <p>Country of origin: US</p> <p>Custom tariff no.: 8413.70.2040</p>

## 96946009 CM 15-2 A-S-I-V-AQQV E-A-A-N 60 Hz



Description	Value
<b>General information:</b>	
Product name:	CM 15-2 A-S-I-V-AQQV E-A-A-N
Product No:	96946009
EAN number:	5700314386528 5700314386528
<b>Technical:</b>	
Pump speed on which pump data are based:	3480 rpm
Actual calculated flow:	70.6 US GPM
Rated flow:	89.8 US GPM
Resulting head of the pump:	147.3 ft
Rated head:	126.7 ft
Impellers:	2
Code for shaft seal:	AQQV
Curve tolerance:	ISO9906:2012 3B
Pump version:	A
Model:	A
<b>Materials:</b>	
Pump housing:	Stainless steel EN 1.4301 AISI 304
Impeller:	Stainless steel EN 1.4301 AISI 304
Material code:	I
Code for rubber:	V
<b>Installation:</b>	
Range of ambient temperature:	-4 .. 131 °F
Maximum operating pressure:	232.06 psi
Max pressure at stated temp:	232 psi / 194 °F 145 psi / 250 °F
Type of connection:	NPT(F)
Size of inlet connection:	2 inch
Size of outlet connection:	2 inch
Outlet position:	12
Connect code:	S
<b>Liquid:</b>	
Pumped liquid:	Water
Liquid temperature range:	-4 .. 248 °F
Selected liquid temperature:	68 °F
Density:	62.29 lb/ft³
<b>Electrical data:</b>	
Motor standard:	NEMA
Frame size:	100B
IE efficiency class:	IE3 / NEMA Premium
Rated power - P2:	5.36 HP
Mains frequency:	60 Hz
Suitable for 50/60 Hz:	N
Phases:	3
Rated voltage:	208-230YY/440-480Y V
Service factor:	1.00
Rated current:	14,8-14,2/7,2-7,0 A
Rated speed:	3520-3530 rpm
Enclosure class (IEC 34-5):	IP55
Insulation class (IEC 85):	F
Built-in motor protection:	NONE
<b>Controls:</b>	
Frequency converter:	NONE





Company name:

Created by:

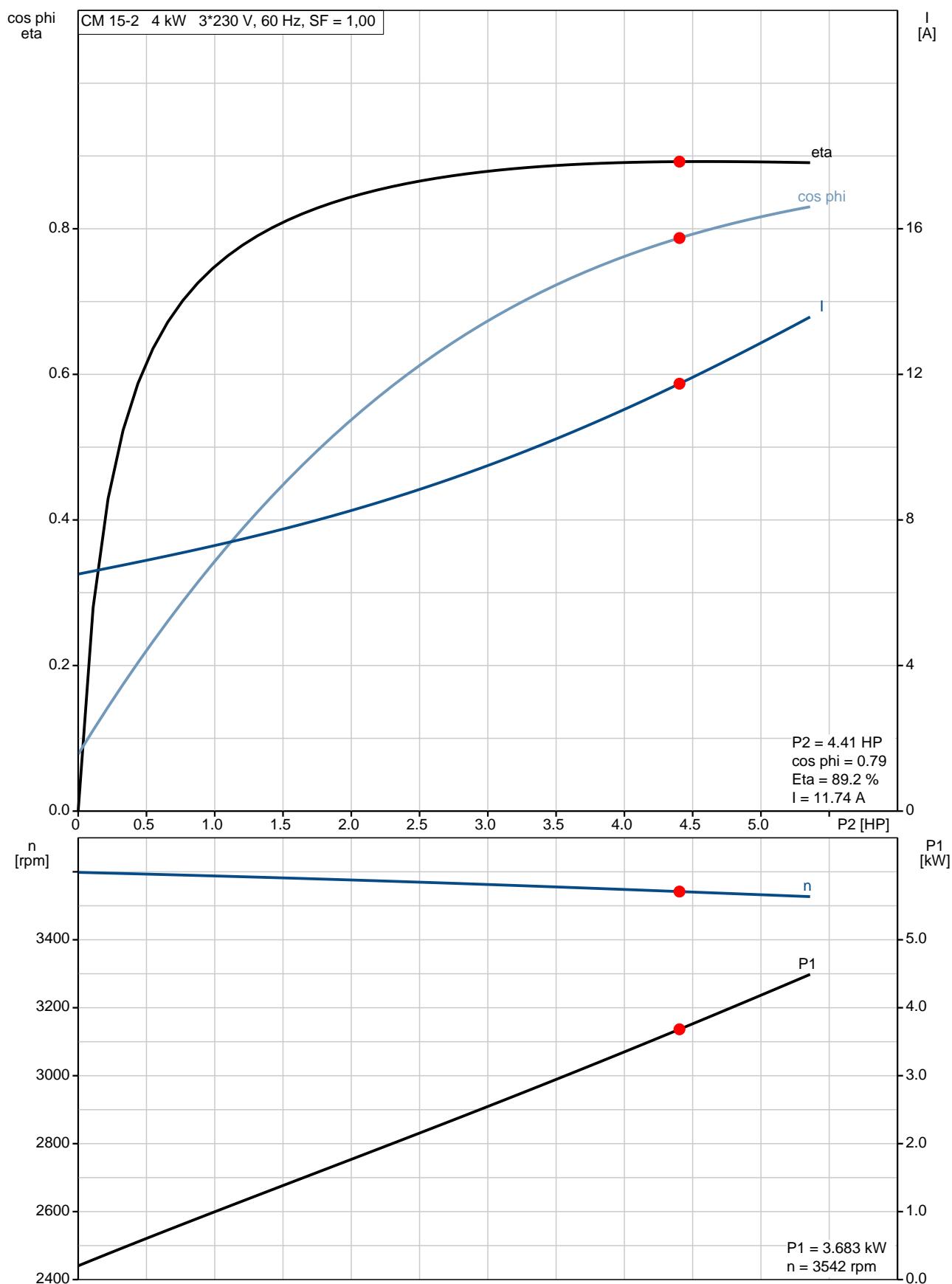
Phone:

Date:

31/03/2020

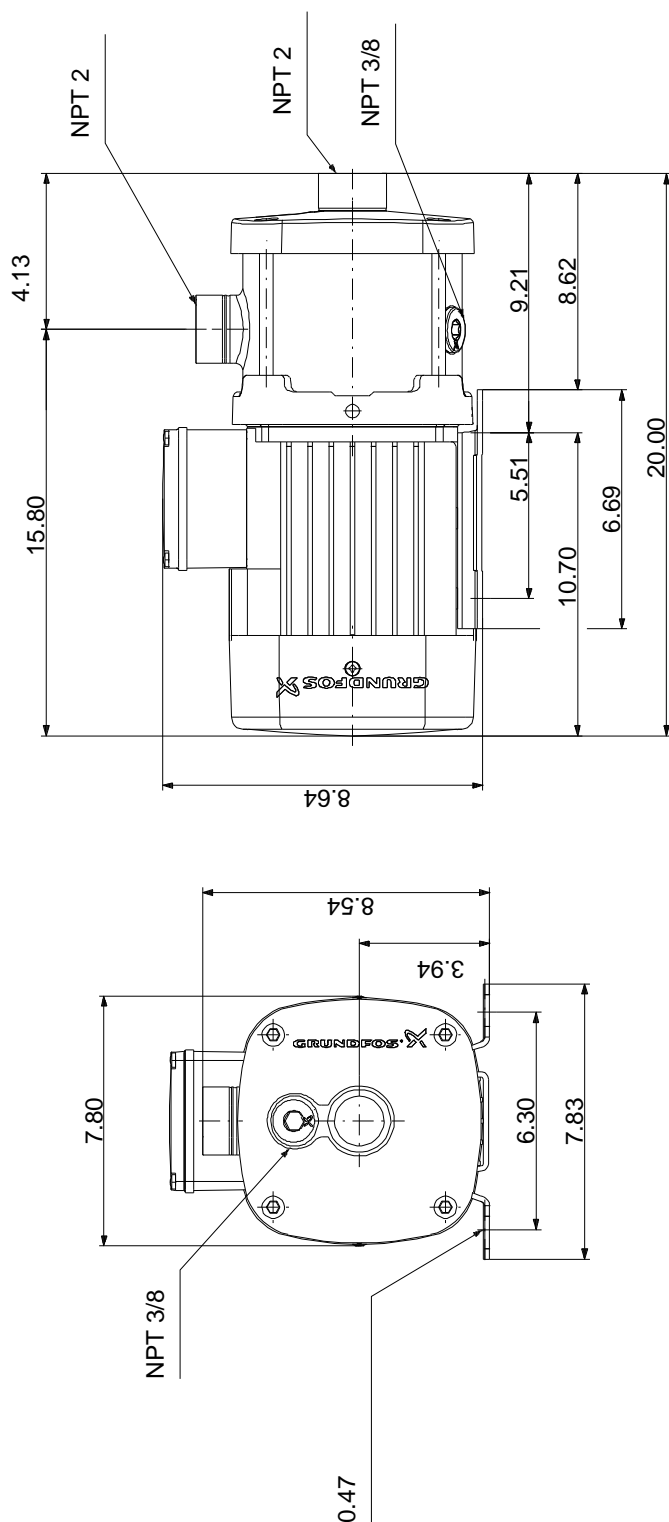
Description	Value
<b>Others:</b>	
Terminal box position:	12
Minimum efficiency index, MEI â%â€¢:	0.59
Net weight:	77.5 lb
Gross weight:	83 lb
Approvals:	CE,CULUS,WRAS,ACS,TR,EA C,CURUS
Country of origin:	US
Custom tariff no.:	8413.70.2040

## 96946009 CM 15-2 A-S-I-V-AQQV E-A-A-N 60 Hz





## 96946009 CM 15-2 A-S-I-V-AQQV E-A-A-N 60 Hz



Note! All units are in [in] unless others are stated.  
Disclaimer: This simplified dimensional drawing does not show all details.

## 96946009 CM 15-2 A-S-I-V-AQQV E-A-A-N 60 Hz



### WARNING

MOTOR MUST BE GROUNDED IN ACCORDANCE WITH THE NATIONAL ELECTRICAL CODE AND LOCAL CODES BY TRAINED PERSONNEL TO PREVENT SERIOUS ELECTRICAL SHOCKS.

TO SERVICE MOTOR, DISCONNECT POWER SOURCE FROM MOTOR AND ANY ACCESSORY DEVICES AND ALLOW MOTOR TO COME TO A COMPLETE STAND STILL.

#### LOW VOLTAGE 60Hz. 208-230V

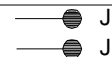


#### HIGH VOLTAGE 60Hz: 460V 50Hz: 400V



INTERCHANGE ANY TWO LINE  
WIRES TO REVERSE ROTATION

THERMOSTAT LEADS  
(WHEN PROVIDED)



Note! All units are in [in] unless others are stated.