

PROJECT: _____	UNIT TAG: _____	QUANTITY: _____
REPRESENTATIVE: _____	TYPE OF SERVICE: _____	DATE: _____
ENGINEER: _____	SUBMITTED BY: _____	DATE: _____
CONTRACTOR: _____	APPROVED BY: _____	DATE: _____
	ORDER NO.: _____	DATE: _____

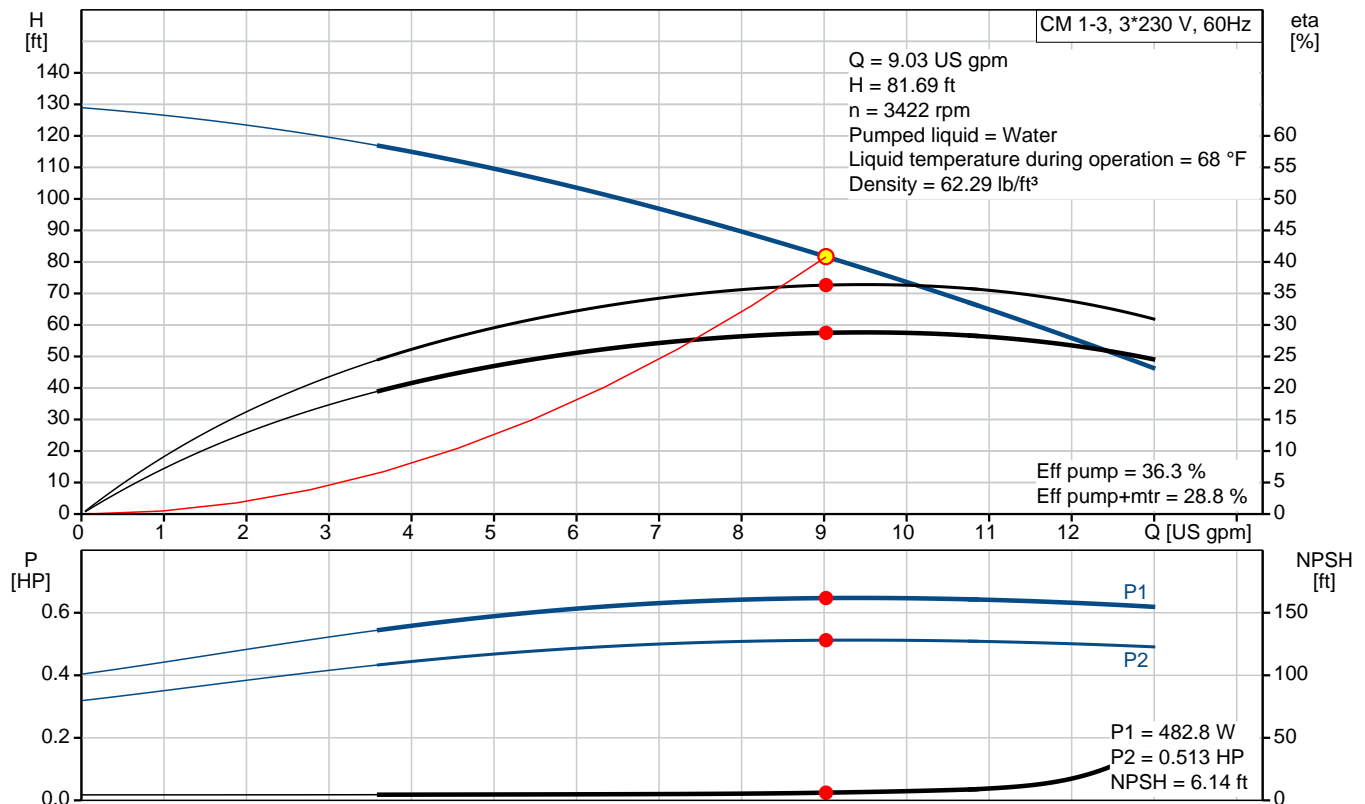
CM 1-3 A-S-I-V-AQQV E-A-A-N

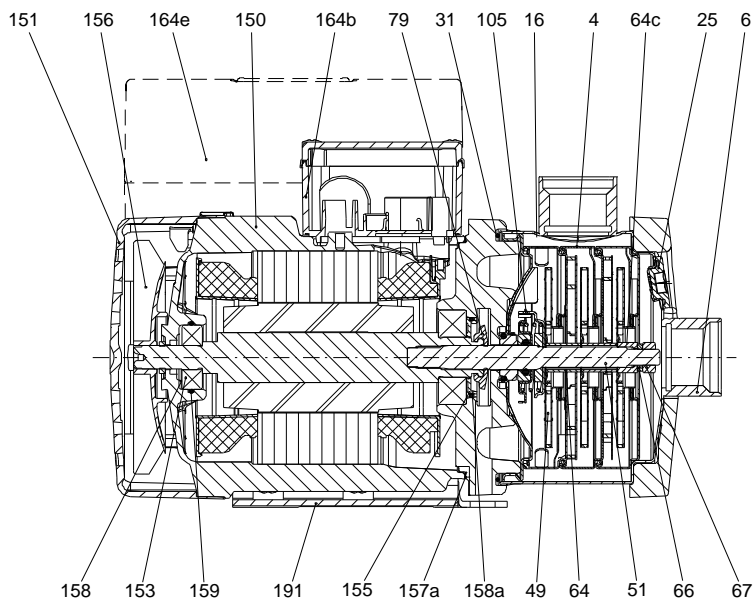
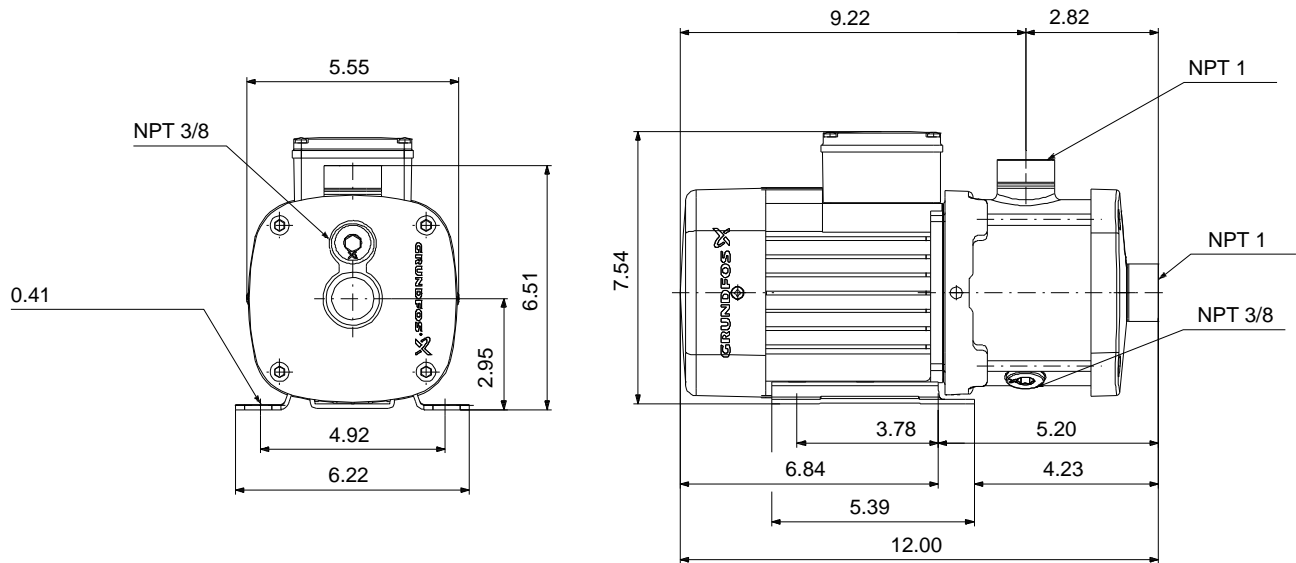


CM are reliable, quiet and compact horizontal end-suction pumps. The modular pump design makes it easy to make customised solutions. The CM pumps are available in cast iron and stainless steel

Product photo could vary from the actual product

Conditions of Service	Pump Data	Motor Data
Flow: 9.03 US gpm	Max pressure at stated temperature: 232 psi / 194 °F	Main frequency: 60 Hz
Head: 81.69 ft	Liquid temperature range: -4 .. 248 °F	Enclosure class: IP55
Efficiency: 28.8 %	Maximum ambient temperature: 131 °F	
Liquid: Water	Shaft seal: AQQV	
Temperature: 68 °F	Product number: 97568256	
NPSH required: 6.14 ft		
Viscosity: _____		
Specific Gravity: 1.000		





Materials:

Pump housing: Stainless steel
AISI 304

Impeller: Stainless steel
AISI 304
EN 1.4301

Material code: I

Code for rubber: V

165x100

Count	Description
1	<p>CM 1-3 A-S-I-V-AQQV E-A-A-N</p>  <p>Product photo could vary from the actual product</p> <p>Product No.: 97568256</p> <p>Compact, reliable, horizontal, multistage, end-suction centrifugal pump with axial suction port and radial discharge port. Pump materials in contact with the liquid are in stainless steel. The mechanical shaft seal is a special designed, unbalanced O-ring seal. Pipework connection is via internal NPT pipe threads.</p> <p>The pump is fitted with a 3-phase, foot-mounted, fan-cooled asynchronous motor.</p> <p>Controls:</p> <p>Frequency converter: NONE</p> <p>Liquid:</p> <p>Pumped liquid: Water</p> <p>Liquid temperature range: -4 .. 248 °F</p> <p>Selected liquid temperature: 68 °F</p> <p>Density: 62.29 lb/ft³</p> <p>Technical:</p> <p>Pump speed on which pump data are based: 3480 rpm</p> <p>Actual calculated flow: 9.03 US gpm</p> <p>Rated flow: 8.98 US gpm</p> <p>Resulting head of the pump: 81.69 ft</p> <p>Rated head: 88.92 ft</p> <p>Code for shaft seal: AQQV</p> <p>Curve tolerance: ISO9906:2012 3B</p> <p>Materials:</p> <p>Pump housing: Stainless steel EN 1.4301 AISI 304</p> <p>Impeller: Stainless steel EN 1.4301 AISI 304</p> <p>Installation:</p> <p>Range of ambient temperature: -4 .. 131 °F</p> <p>Maximum operating pressure: 232.06 psi</p> <p>Max pressure at stated temperature: 232 psi / 194 °F 145 psi / 250 °F</p> <p>Type of connection: NPT(F)</p> <p>Size of suction port: 1 inch</p> <p>Size of outlet port: 1 inch</p> <p>Outlet position: 12</p> <p>Electrical data:</p>



Company name: PFC Equipment

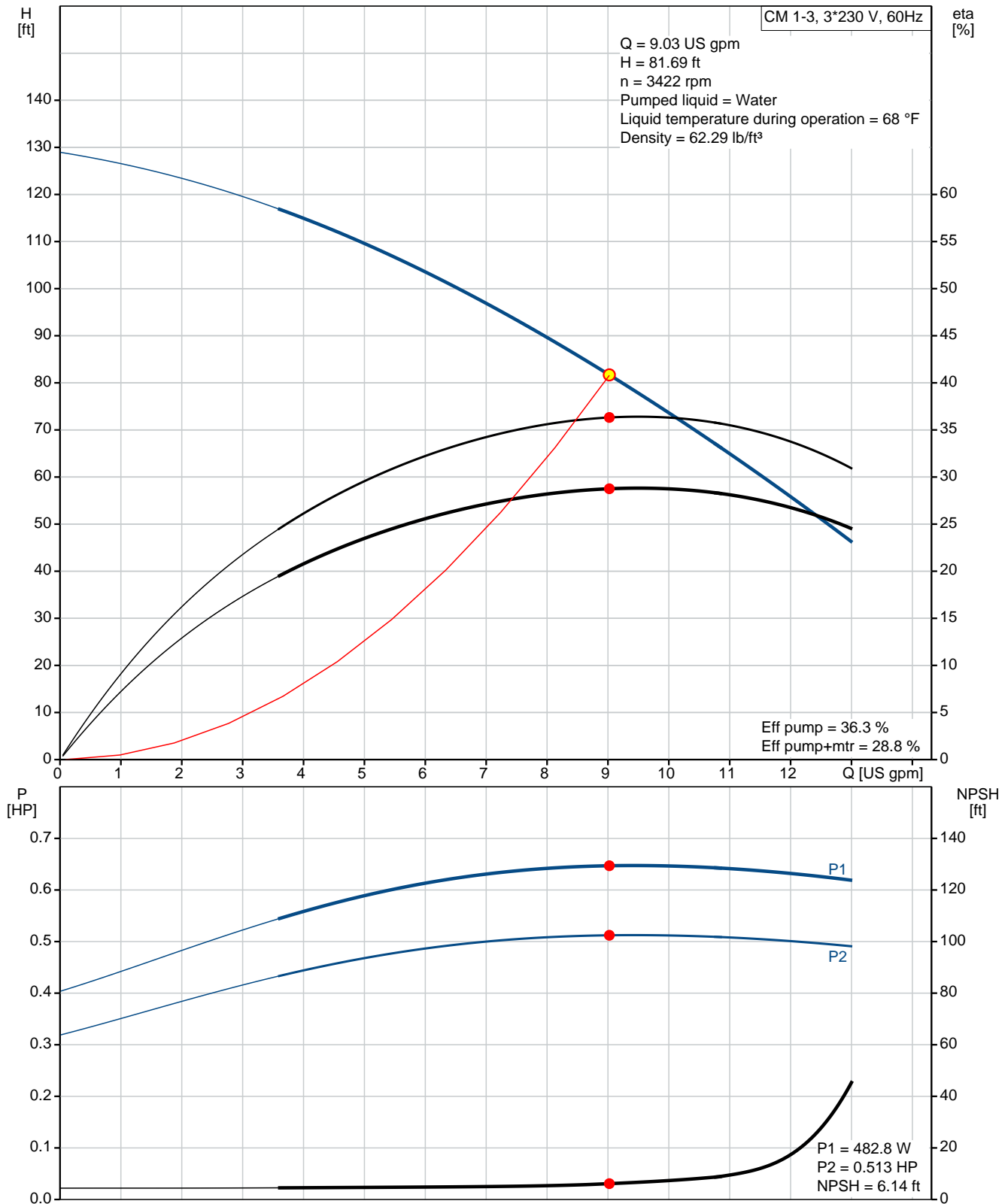
Created by:

Phone:

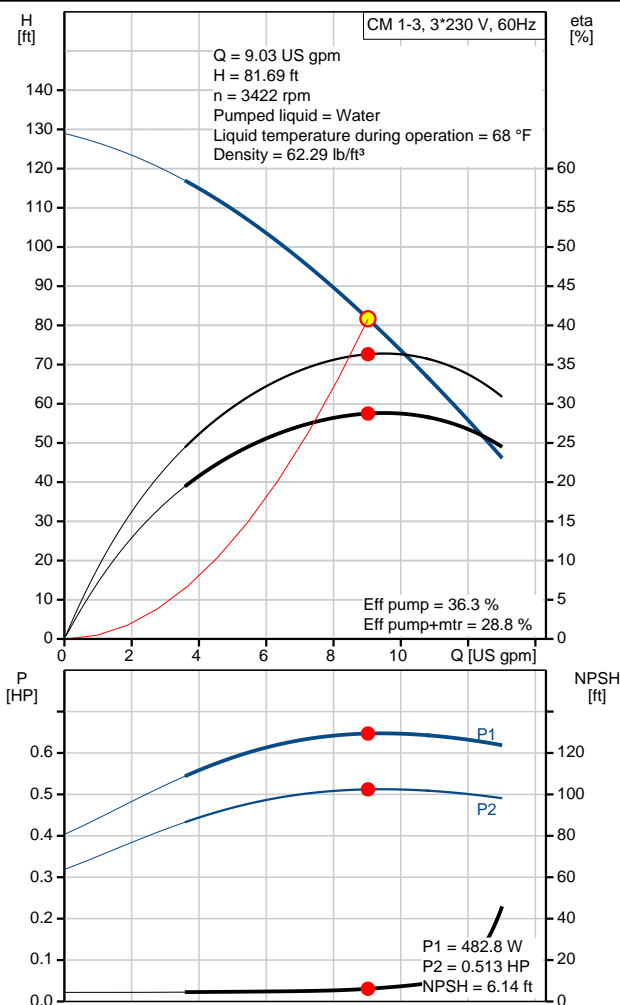
Date: 3/25/2020

Count	Description
	Motor standard: NEMA Frame size: 71A Rated power - P2: 0.577 HP Main frequency: 60 Hz Suitable for 50/60 Hz: N Phase: 3 Rated voltage: 208-230YY/440-480Y V Service factor: 1.00 Rated current: 1,9-1,7/1,0-0,8 A Rated speed: 3360-3420 rpm Enclosure class (IEC 34-5): IP55 Insulation class (IEC 85): F Built-in motor protection: NONE Others: Terminal box position: 12 Minimum efficiency index, MEI $\eta_{\%}$: 0.68 Net weight: 25.8 lb Gross weight: 31.4 lb Approvals: CE,CULUS,WRAS,ACS,TR,EAC,CURUS Country of origin: US Custom tariff no.: 8413.70.2040

97568256 CM 1-3 A-S-I-V-AQQV E-A-A-N 60 Hz



Description	Value
General information:	
Product name:	CM 1-3 A-S-I-V-AQQV E-A-A-N
Product No.:	97568256
EAN:	5700318668170
	5700318668170
Technical:	
Pump speed on which pump data are based:	3480 rpm
Actual calculated flow:	9.03 US gpm
Rated flow:	8.98 US gpm
Resulting head of the pump:	81.69 ft
Rated head:	88.92 ft
Impellers:	3
Code for shaft seal:	AQQV
Curve tolerance:	ISO9906:2012 3B
Pump version:	A
Model:	A
Materials:	
Pump housing:	Stainless steel
	EN 1.4301
	AISI 304
Impeller:	Stainless steel
	EN 1.4301
	AISI 304
Material code:	I
Code for rubber:	V
Installation:	
Range of ambient temperature:	-4 .. 131 °F
Maximum operating pressure:	232.06 psi
Max pressure at stated temperature:	232 psi / 194 °F
	145 psi / 250 °F
Type of connection:	NPT(F)
Size of suction port:	1 inch
Size of outlet port:	1 inch
Outlet position:	12
Connect code:	S
Liquid:	
Pumped liquid:	Water
Liquid temperature range:	-4 .. 248 °F
Selected liquid temperature:	68 °F
Density:	62.29 lb/ft³
Electrical data:	
Motor standard:	NEMA
Frame size:	71A
Rated power - P2:	0.577 HP
Main frequency:	60 Hz
Suitable for 50/60 Hz:	N
Phase:	3
Rated voltage:	208-230YY/440-480Y V
Service factor:	1.00
Rated current:	1,9-1,7/1,0-0,8 A
Rated speed:	3360-3420 rpm
Enclosure class (IEC 34-5):	IP55





Company name: PFC Equipment

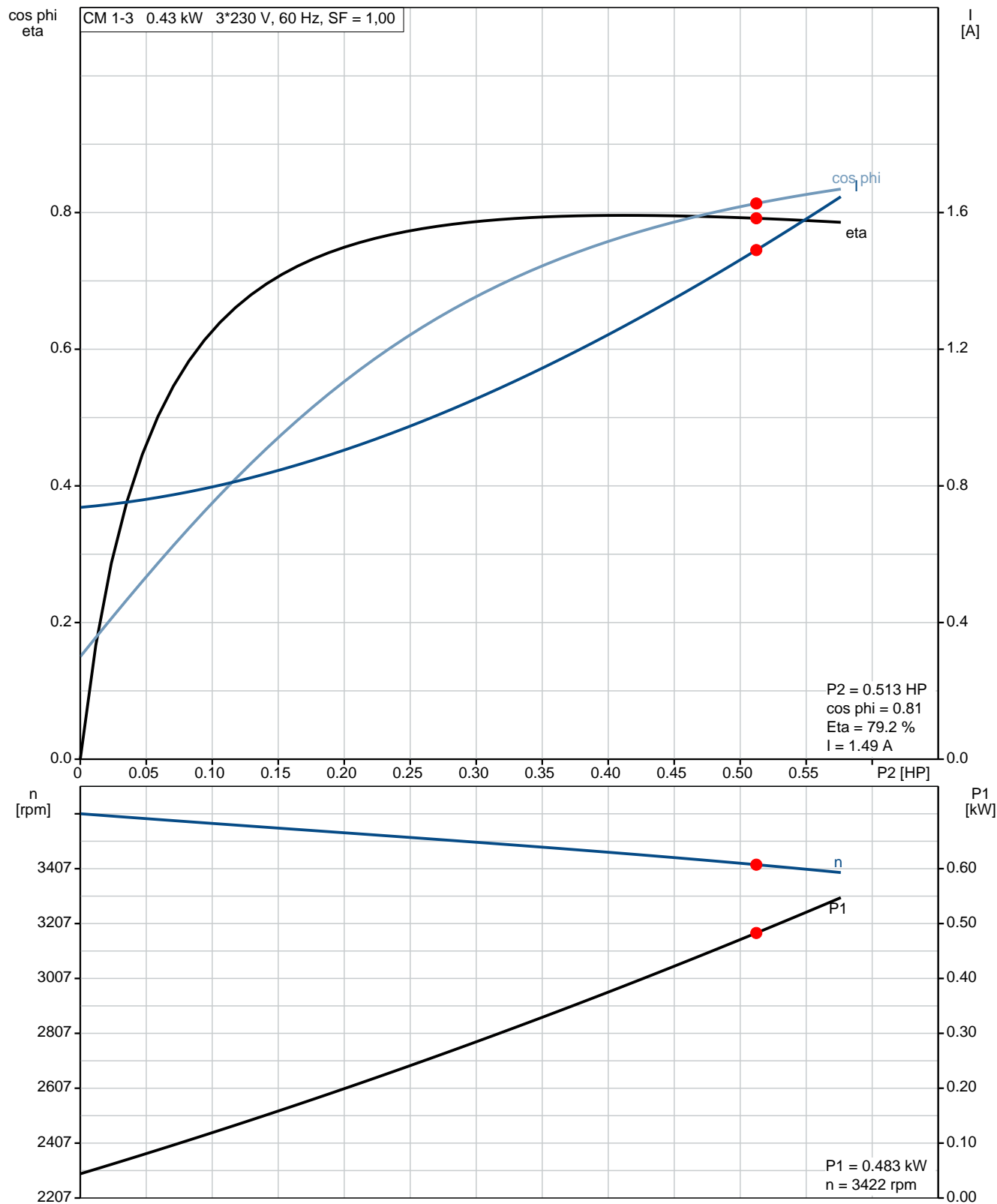
Created by:

Phone:

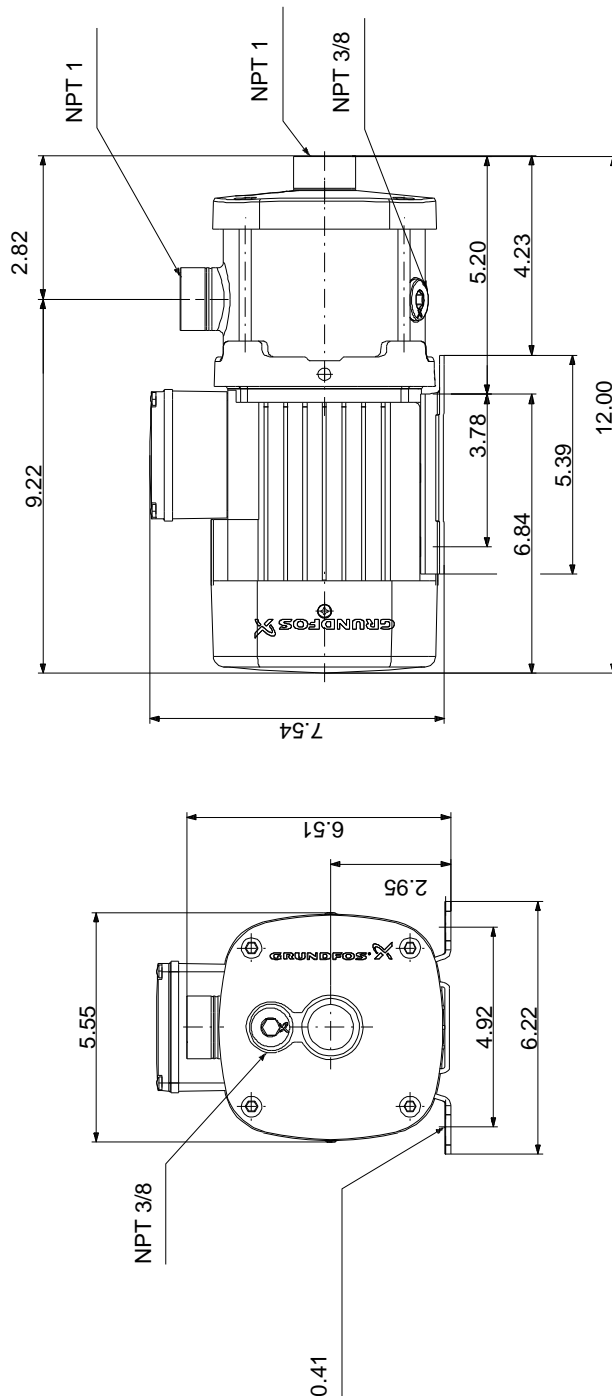
Date: 3/25/2020

Description	Value
Insulation class (IEC 85):	F
Built-in motor protection:	NONE
Controls:	
Frequency converter:	NONE
Others:	
Terminal box position:	12
Minimum efficiency index, MEI â%â€:â€:	0.68
Net weight:	25.8 lb
Gross weight:	31.4 lb
Approvals:	CE,CULUS,WRAS,ACS,TR,EA C,CURUS
Country of origin:	US
Custom tariff no.:	8413.70.2040

97568256 CM 1-3 A-S-I-V-AQQV E-A-A-N 60 Hz



97568256 CM 1-3 A-S-I-V-AQQV E-A-A-N 60 Hz



Note! All units are in [in] unless otherwise stated.
Disclaimer: This simplified dimensional drawing does not show all details.

97568256 CM 1-3 A-S-I-V-AQQV E-A-A-N 60 Hz

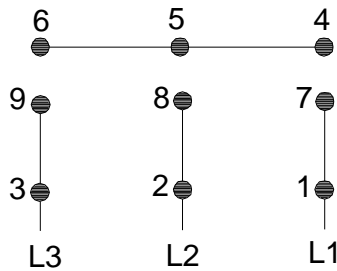


WARNING

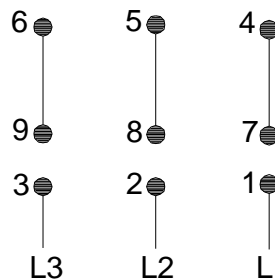
MOTOR MUST BE GROUNDED IN ACCORDANCE WITH THE NATIONAL ELECTRICAL CODE AND LOCAL CODES BY TRAINED PERSONNEL TO PREVENT SERIOUS ELECTRICAL SHOCKS.

TO SERVICE MOTOR, DISCONNECT POWER SOURCE FROM MOTOR AND ANY ACCESSORY DEVICES AND ALLOW MOTOR TO COME TO A COMPLETE STAND STILL.

LOW VOLTAGE 60Hz. 208-230V



HIGH VOLTAGE 60Hz: 460V 50Hz: 400V



96553852

INTERCHANGE ANY TWO LINE

WIRES TO REVERSE ROTATION

THERMOSTAT LEADS

(WHEN PROVIDED)

