

| | | |
|-----------------------|------------------------|-----------------|
| PROJECT: _____ | UNIT TAG: _____ | QUANTITY: _____ |
| REPRESENTATIVE: _____ | TYPE OF SERVICE: _____ | DATE: _____ |
| ENGINEER: _____ | SUBMITTED BY: _____ | DATE: _____ |
| CONTRACTOR: _____ | APPROVED BY: _____ | DATE: _____ |
| | ORDER NO.: _____ | DATE: _____ |

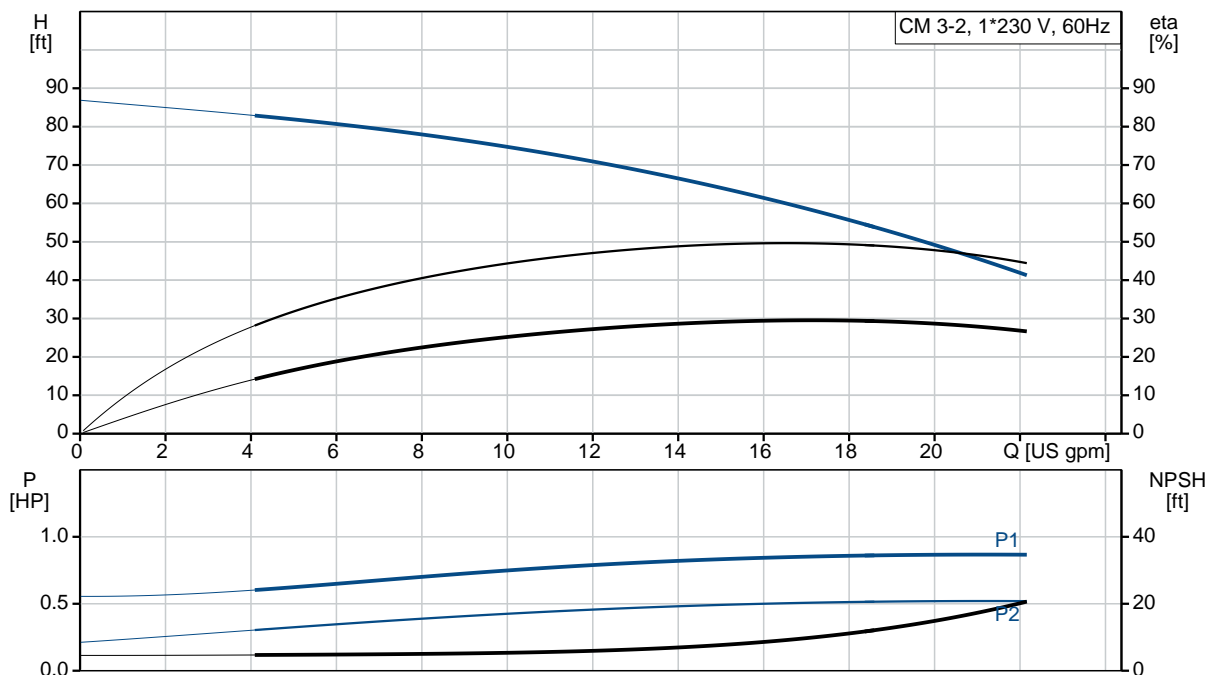
CM 3-2 A-S-A-V-AQQV B-A-A-N

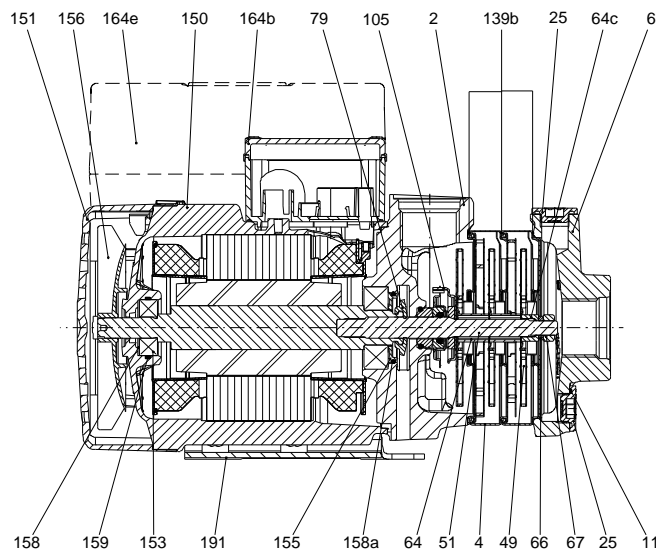
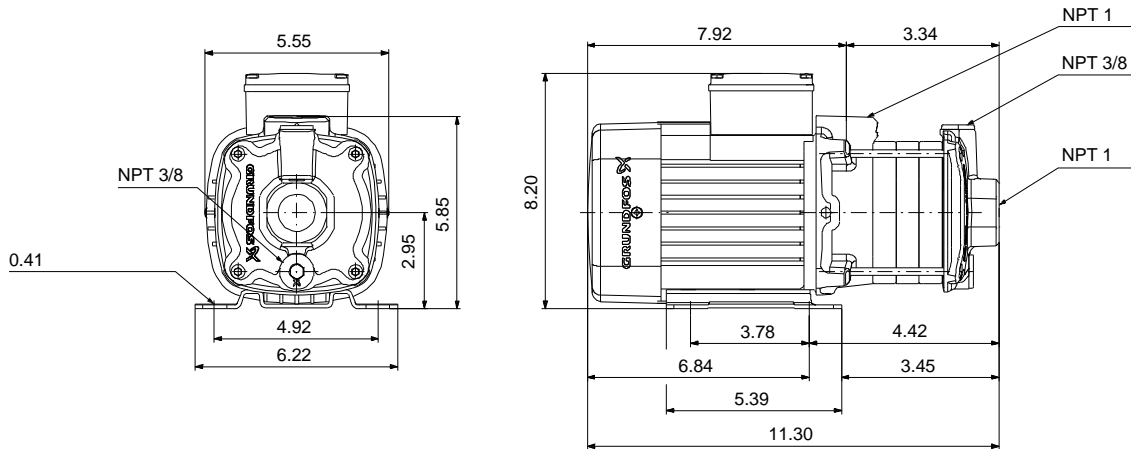


CM are reliable, quiet and compact horizontal end-suction pumps. The modular pump design makes it easy to make customised solutions. The CM pumps are available in cast iron and stainless steel

Product photo could vary from the actual product

| Conditions of Service | Pump Data | Motor Data |
|-------------------------|--|-----------------------|
| Flow: _____ | Max pressure at stated temperature: 145 psi / 194 °F | Main frequency: 60 Hz |
| Head: _____ | Liquid temperature range: -4 .. 194 °F | Enclosure class: IP55 |
| Efficiency: _____ | Maximum ambient temperature: 131 °F | |
| Liquid: Water | Shaft seal: AQQV | |
| Temperature: 68 °F | Product number: 97568316 | |
| NPSH required: ft | | |
| Viscosity: _____ | | |
| Specific Gravity: 1.000 | | |





165x100



Materials:

Pump housing: Cast iron
ASTM A48-25A

Impeller: Stainless steel
AISI 304
EN 1.4301

Material code: A

Code for rubber: V

| Count | Description |
|-------|--|
| 1 | <p>CM 3-2 A-S-A-V-AQQV B-A-A-N</p>  <p>Product No.: 97568316</p> <p>Compact, reliable, horizontal, multistage, end-suction centrifugal pump with axial suction port and radial discharge port. The shaft, impellers and chambers are made of stainless steel. The inlet and discharge parts are made of cast iron. The mechanical shaft seal is a special designed, unbalanced O-ring seal. Pipework connection is via internal NPT pipe threads.</p> <p>The pump is fitted with a 1-phase, foot-mounted, fan-cooled asynchronous motor.</p> <p>Further product details</p> <p>Pump and motor are integrated in a compact and user-friendly design. The pump is fitted to a low base plate, making it ideal for installation in systems where compactness is important.</p> <p>The state-of-the-art design and materials of the shaft seal ensure high wear resistance, improved sticking and dry-running capabilities and long operating life.</p> <p>Servicing the pump requires no special service tools. Service parts are in stock for quick delivery and are available as kits, single parts or bulk. Service videos are available on www.youtube.com.</p> <p>Pump</p> <p>A combination of a stop ring and a Nord-lock® washer secures a tight and reliable fixation of the impeller spacing pipes to the splined pump shaft. It is possible to remove and fit the hydraulic parts from the pump side. The inlet part, chambers and discharge part are held together by four staybolts.</p> <p>The pump is fitted with an unbalanced O-ring seal with a rigid torque-transmission system. It has a fixed seal driver ensuring a reliable rotation of all parts. The dynamic secondary seal is an O-ring.</p> <p>Primary seal:</p> <ul style="list-style-type: none"> Rotating seal ring material: silicon carbide (SiC) Stationary seat material: silicon carbide (SiC) <p>This material pairing is used where higher corrosion resistance is required. The high hardness of this material pairing offers good resistance against abrasive particles.</p> <p>Secondary seal material: FKM (fluorocarbon rubber)</p> <p>FKM has excellent resistance to oils and chemicals. Above 90 °C, FKM should only be used in media without water.</p>  |



Company name:

Created by:

Phone:

Date:

3/25/2020

| Count | Description |
|-------|--|
| | <p>The pump shaft is connected to the motor shaft through a left thread and tight fit. The shaft cannot be dismantled.</p> <p>Motor</p> <p>The motor is a totally enclosed, fan-cooled motor with principal dimensions to EN 50347. Electrical tolerances comply with EN 60034.</p> <p>Technical data</p> <p>Controls:</p> <p>Frequency converter: NONE</p> <p>Liquid:</p> <p>Pumped liquid: Water</p> <p>Liquid temperature range: -4 .. 194 °F</p> <p>Selected liquid temperature: 68 °F</p> <p>Density: 62.29 lb/ft³</p> <p>Technical:</p> <p>Pump speed on which pump data are based: 3480 rpm</p> <p>Rated flow: 16.4 US gpm</p> <p>Rated head: 64.01 ft</p> <p>Code for shaft seal: AQQV</p> <p>Curve tolerance: ISO9906:2012 3B</p> <p>Materials:</p> <p>Pump housing: Cast iron EN-GJL-200 ASTM A48-25A</p> <p>Impeller: Stainless steel EN 1.4301 AISI 304</p> <p>Installation:</p> <p>Range of ambient temperature: -4 .. 131 °F</p> <p>Maximum operating pressure: 145.04 psi</p> <p>Max pressure at stated temperature: 145 psi / 194 °F 145 psi / 194 °F</p> <p>Type of connection: NPT(F)</p> <p>Size of suction port: 1 inch</p> <p>Size of outlet port: 1 inch</p> <p>Outlet position: 12</p> <p>Electrical data:</p> <p>Motor standard: NEMA</p> <p>Frame size: 71B</p> <p>Rated power - P2: 0.805 HP</p> <p>Main frequency: 60 Hz</p> <p>Suitable for 50/60 Hz: N</p> |



Company name:

Created by:

Phone:

Date:

3/25/2020

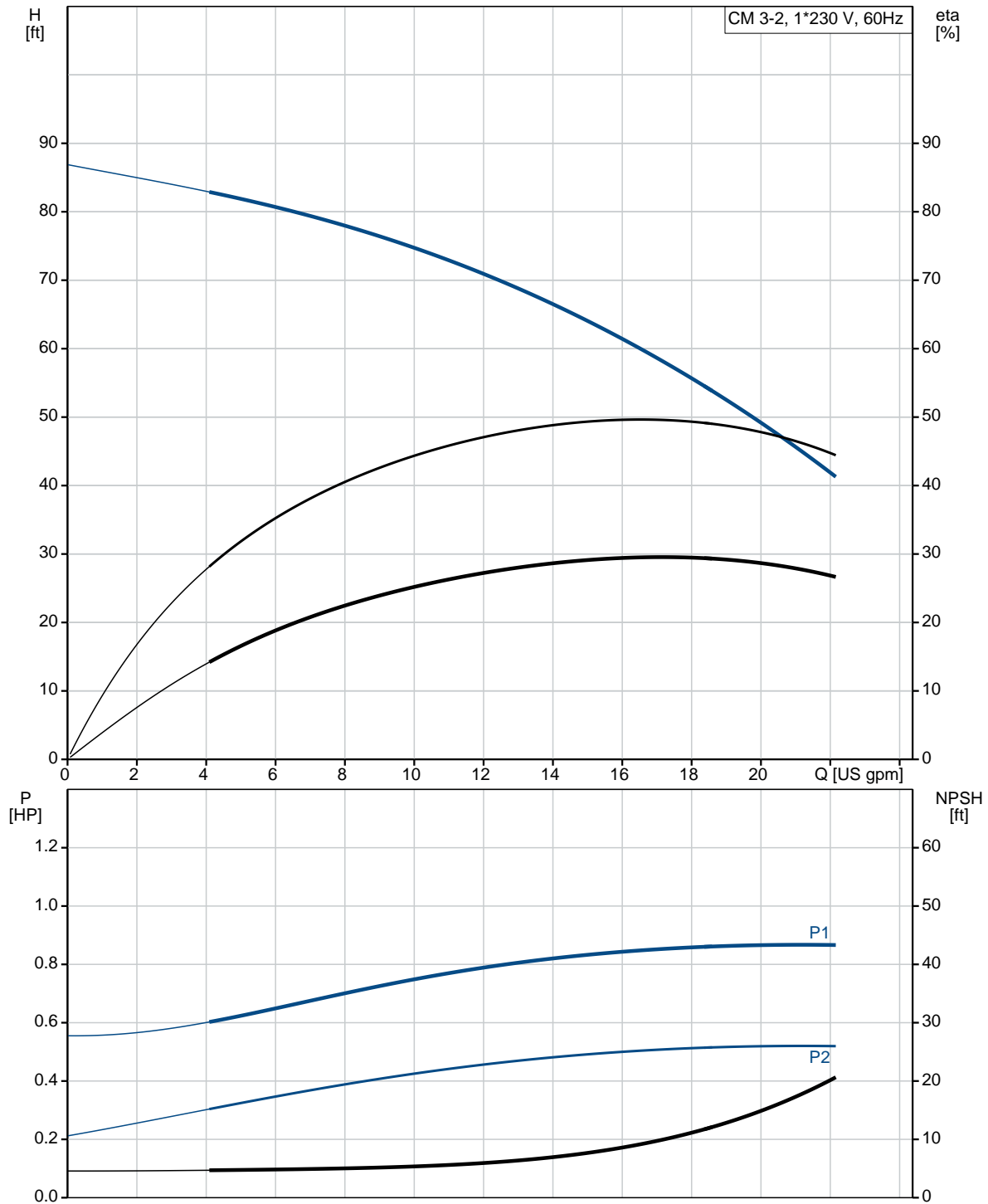
| Count | Description |
|-------|---|
| | Phase: 1 |
| | Rated voltage: 115/230 V |
| | Service factor: 1.00 |
| | Rated current: 7.6/3.9 A |
| | Starting current: 260-260 % |
| | Rated speed: 3240 rpm |
| | Enclosure class (IEC 34-5): IP55 |
| | Insulation class (IEC 85): F |
| | Built-in motor protection: NONE |
| | Others: |
| | Terminal box position: 12 |
| | Minimum efficiency index, MEI $\eta_{\%}$: 0.7 |
| | Net weight: 25.8 lb |
| | Gross weight: 31.3 lb |
| | Approvals: CE,CULUS,WRAS,ACS,TR,EAC,CURUS |
| | Country of origin: US |
| | Custom tariff no.: 8413.70.2040 |



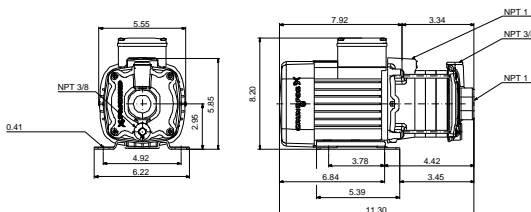
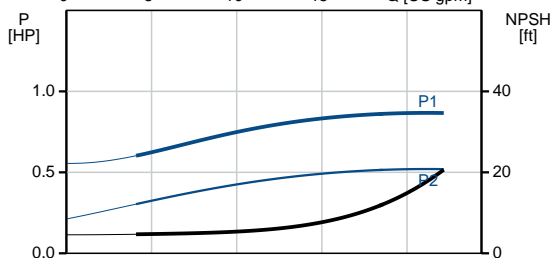
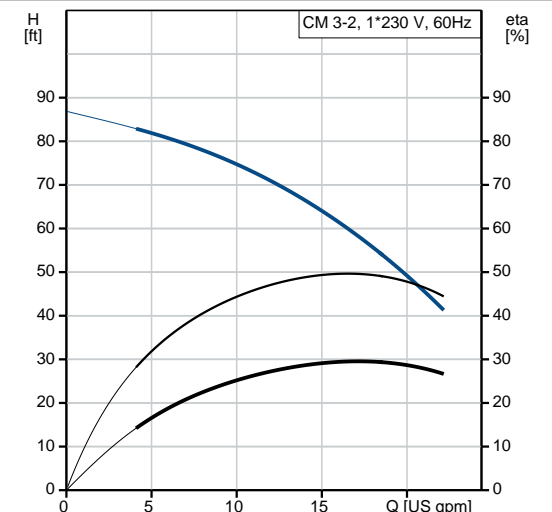
Company name:
Created by:
Phone:

Date: 3/25/2020

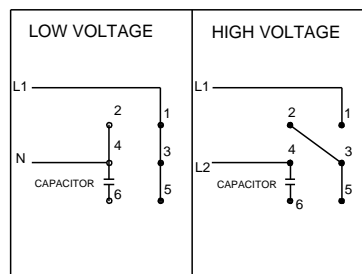
97568316 CM 3-2 A-S-A-V-AQQV B-A-A-N 60 Hz



| Description | Value |
|--|--|
| General information: | |
| Product name: | CM 3-2 A-S-A-V-AQQV B-A-A-N |
| Product No.: | 97568316 |
| EAN: | 5700318668774 5700318668774 |
| Technical: | |
| Pump speed on which pump data are based: | 3480 rpm |
| Rated flow: | 16.4 US gpm |
| Rated head: | 64.01 ft |
| Impellers: | 2 |
| Code for shaft seal: | AQQV |
| Curve tolerance: | ISO9906:2012 3B |
| Pump version: | A |
| Model: | A |
| Materials: | |
| Pump housing: | Cast iron EN-GJL-200 ASTM A48-25A |
| Impeller: | Stainless steel EN 1.4301 AISI 304 |
| Material code: | A |
| Code for rubber: | V |
| Installation: | |
| Range of ambient temperature: | -4 .. 131 °F |
| Maximum operating pressure: | 145.04 psi |
| Max pressure at stated temperature: | 145 psi / 194 °F 145 psi / 194 °F |
| Type of connection: | NPT(F) |
| Size of suction port: | 1 inch |
| Size of outlet port: | 1 inch |
| Outlet position: | 12 |
| Connect code: | S |
| Liquid: | |
| Pumped liquid: | Water |
| Liquid temperature range: | -4 .. 194 °F |
| Selected liquid temperature: | 68 °F |
| Density: | 62.29 lb/ft³ |
| Electrical data: | |
| Motor standard: | NEMA |
| Frame size: | 71B |
| Rated power - P2: | 0.805 HP |
| Main frequency: | 60 Hz |
| Suitable for 50/60 Hz: | N |
| Phase: | 1 |



SUITABLE FOR FIELD CONNECTION





Company name:

Created by:

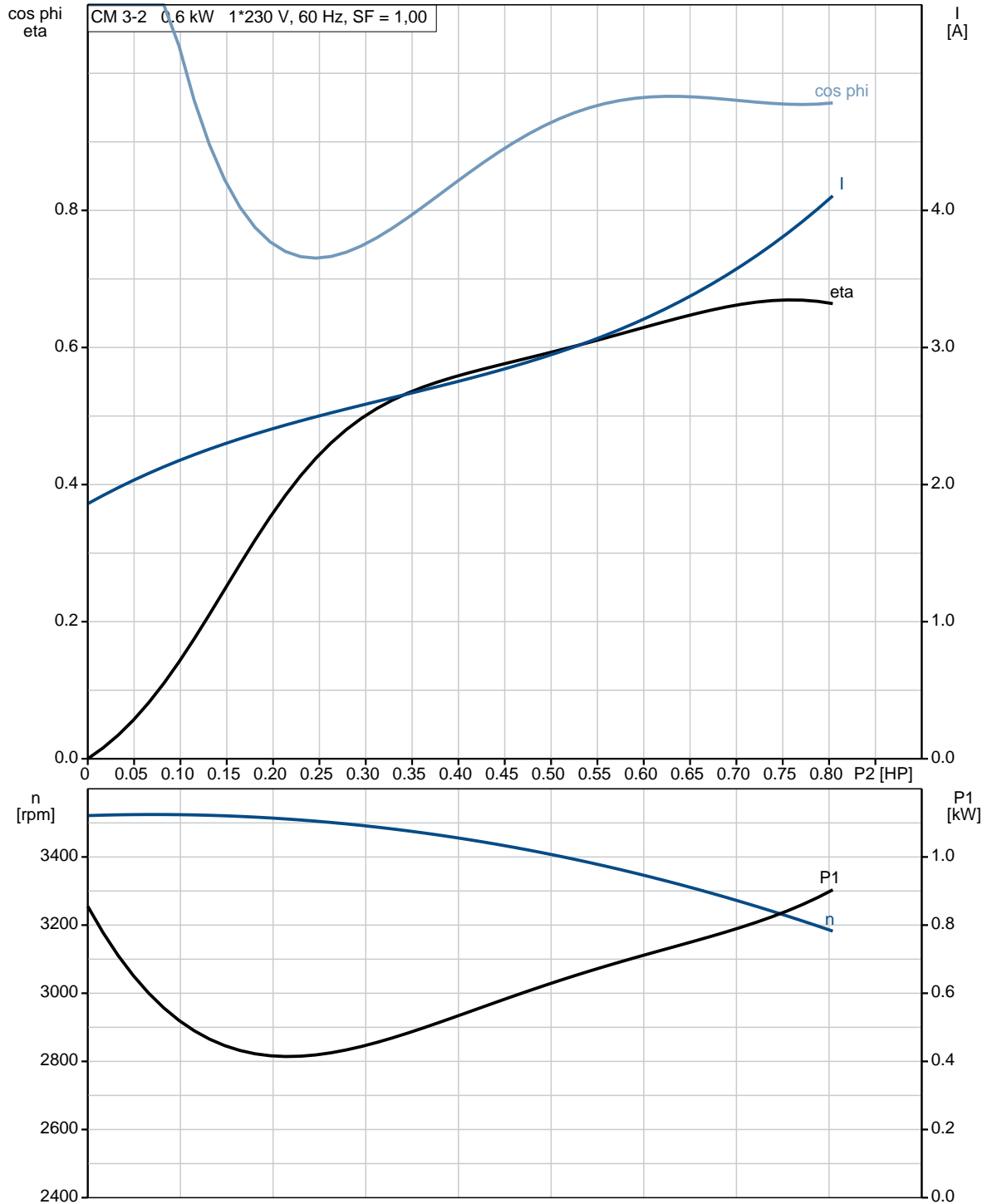
Phone:

Date:

3/25/2020

| Description | Value |
|--|------------------------------------|
| Rated voltage: | 115/230 V |
| Service factor: | 1.00 |
| Rated current: | 7.6/3.9 A |
| Starting current: | 260-260 % |
| Rated speed: | 3240 rpm |
| Enclosure class (IEC 34-5): | IP55 |
| Insulation class (IEC 85): | F |
| Built-in motor protection: | NONE |
| Controls: | |
| Frequency converter: | NONE |
| Others: | |
| Terminal box position: | 12 |
| Minimum efficiency index, MEI â‰¥%: | 0.7 |
| Net weight: | 25.8 lb |
| Gross weight: | 31.3 lb |
| Approvals: | CE,CULUS,WRAS,ACS,TR,E AC,CURUS |
| Country of origin: | US |
| Custom tariff no.: | 8413.70.2040 |

97568316 CM 3-2 A-S-A-V-AQQV B-A-A-N 60 Hz

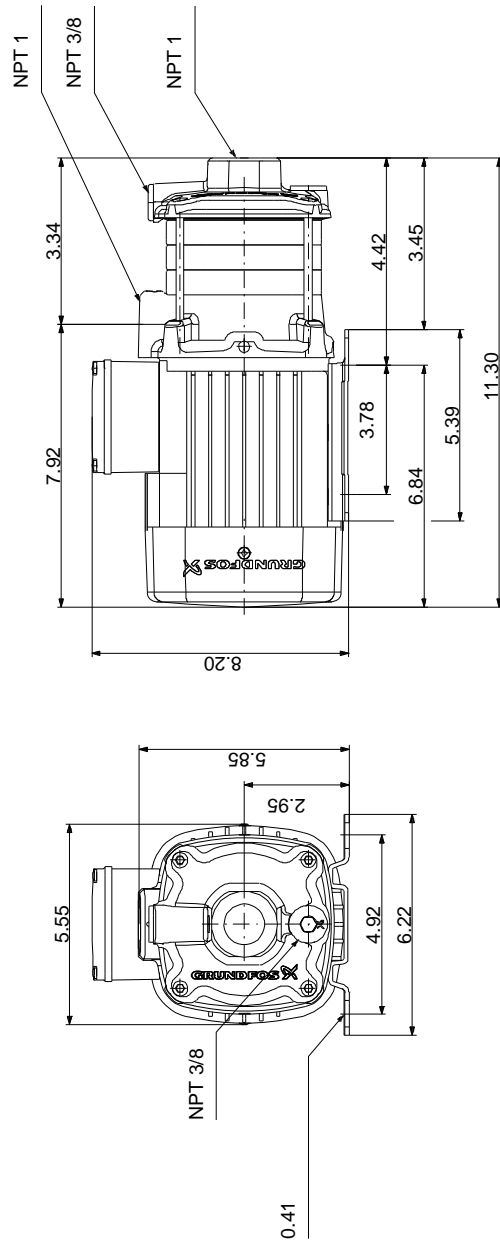




Company name:
Created by:
Phone:

Date: 3/25/2020

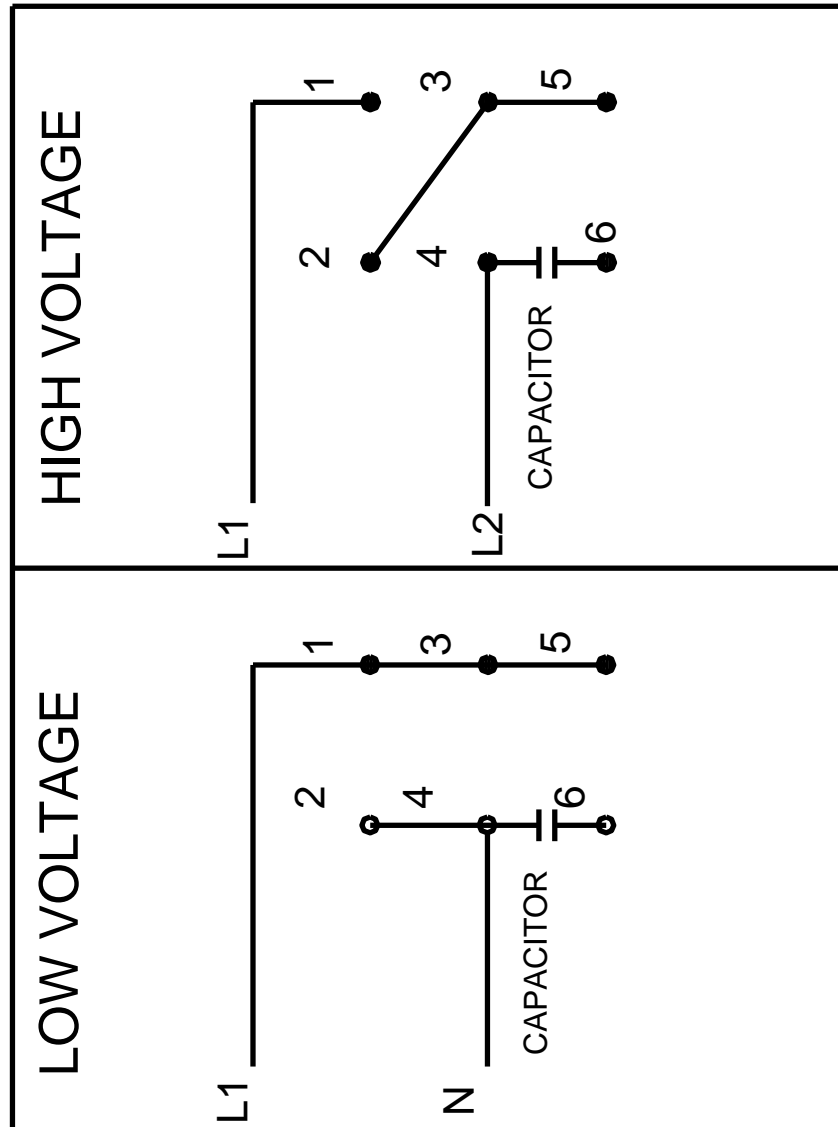
97568316 CM 3-2 A-S-A-V-AQQV B-A-A-N 60 Hz



Note! All units are in [in] unless otherwise stated.
Disclaimer: This simplified dimensional drawing does not show all details.

97568316 CM 3-2 A-S-A-V-AQQV B-A-A-N 60 Hz

SUITABLE FOR FIELD CONNECTION



All units are [in] unless otherwise presented.