

PROJECT: _____	UNIT TAG: _____	QUANTITY: _____
REPRESENTATIVE: _____	TYPE OF SERVICE: _____	DATE: _____
ENGINEER: _____	SUBMITTED BY: _____	DATE: _____
CONTRACTOR: _____	APPROVED BY: _____	DATE: _____
	ORDER NO.: _____	DATE: _____

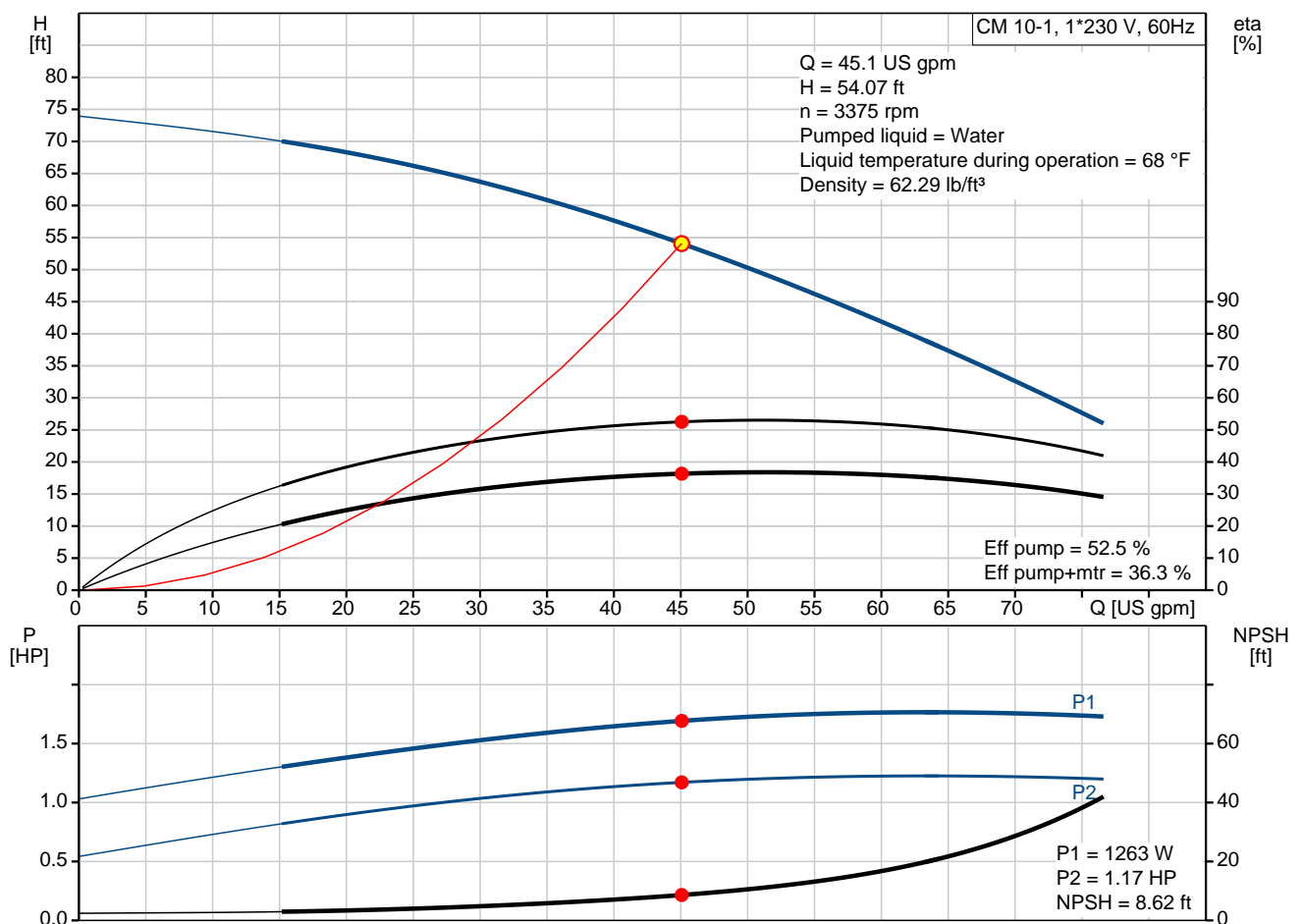
CM 10-1 A-S-I-V-AQQV B-A-A-N

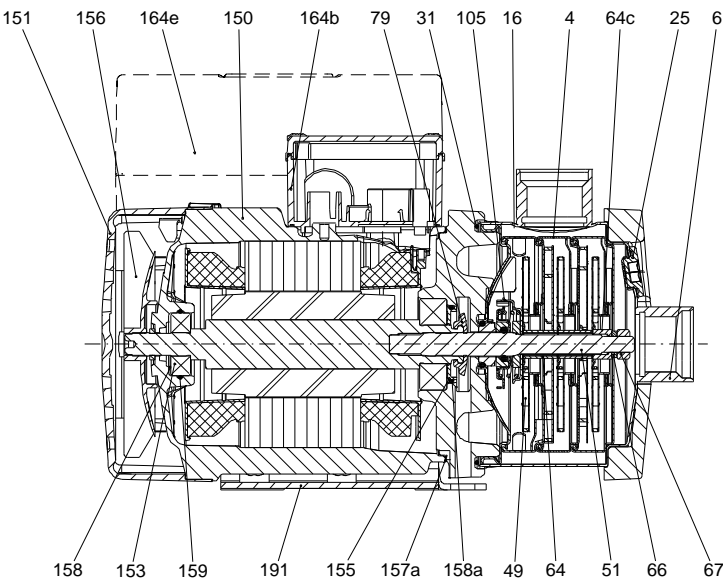
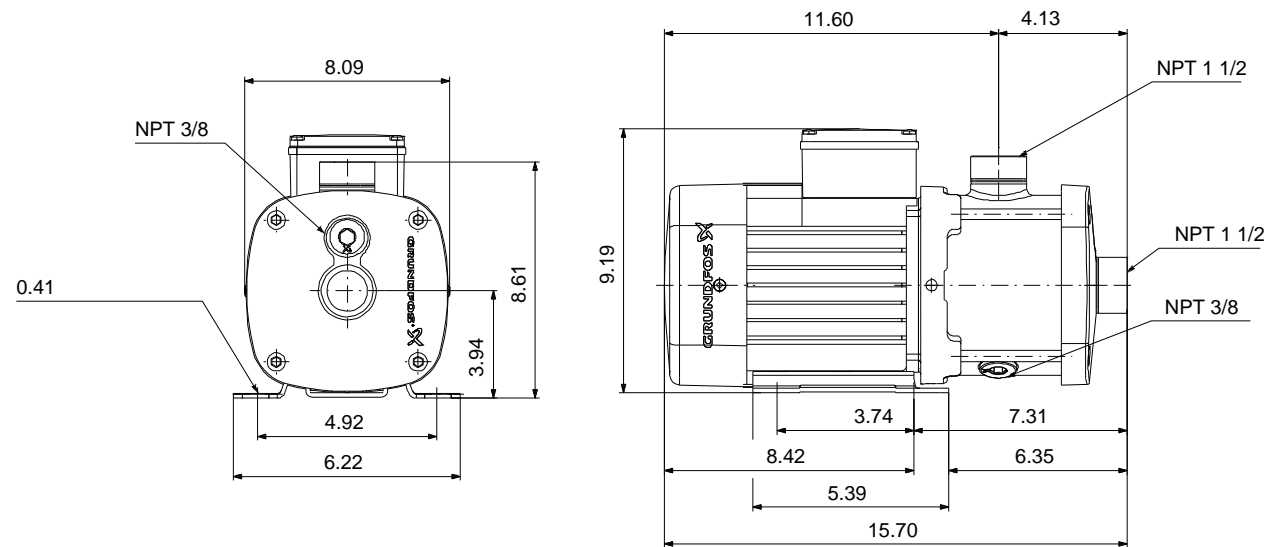


CM are reliable, quiet and compact horizontal end-suction pumps. The modular pump design makes it easy to make customised solutions. The CM pumps are available in cast iron and stainless steel

Product photo could vary from the actual product

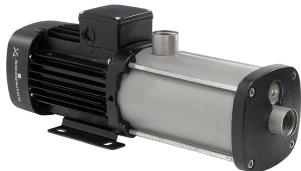
Conditions of Service		Pump Data		Motor Data	
Flow:	45.1 US gpm	Max pressure at stated temperature:	232 psi / 194 °F	Main frequency:	60 Hz
Head:	54.07 ft	Liquid temperature range:	-4 .. 248 °F	Enclosure class:	IP55
Efficiency:	36.3 %	Maximum ambient temperature:	131 °F		
Liquid:	Water	Shaft seal:	AQQV		
Temperature:	68 °F	Product number:	97568500		
NPSH required:	8.62 ft				
Viscosity:	_____				
Specific Gravity:	1.000				





Materials:
Pump housing: Stainless steel
AISI 304
Impeller: Stainless steel
AISI 304
EN 1.4301
Material code: I
Code for rubber: V

165x100

Count	Description
1	<p>CM 10-1 A-S-I-V-AQQV B-A-A-N</p>  <p>Product photo could vary from the actual product</p> <p>Product No.: 97568500</p> <p>Compact, reliable, horizontal, multistage, end-suction centrifugal pump with axial suction port and radial discharge port. Pump materials in contact with the liquid are in stainless steel. The mechanical shaft seal is a special designed, unbalanced O-ring seal. Pipework connection is via internal NPT pipe threads.</p> <p>The pump is fitted with a 1-phase, foot-mounted, fan-cooled asynchronous motor.</p> <p>Controls: Frequency converter: NONE</p> <p>Liquid: Pumped liquid: Water Liquid temperature range: -4 .. 248 °F Selected liquid temperature: 68 °F Density: 62.29 lb/ft³</p> <p>Technical: Pump speed on which pump data are based: 3480 rpm Actual calculated flow: 45.1 US gpm Rated flow: 52.8 US gpm Resulting head of the pump: 54.07 ft Rated head: 52.89 ft Code for shaft seal: AQQV Curve tolerance: ISO9906:2012 3B</p> <p>Materials: Pump housing: Stainless steel EN 1.4301 AISI 304 Impeller: Stainless steel EN 1.4301 AISI 304</p> <p>Installation: Range of ambient temperature: -4 .. 131 °F Maximum operating pressure: 232.06 psi Max pressure at stated temperature: 232 psi / 194 °F 145 psi / 250 °F Type of connection: NPT(F) Size of suction port: 1 1/2 inch Size of outlet port: 1 1/2 inch Outlet position: 12</p> <p>Electrical data: Motor standard: NEMA Frame size: 80B Rated power - P2: 1.48 HP Main frequency: 60 Hz</p>



Company name:

Created by:

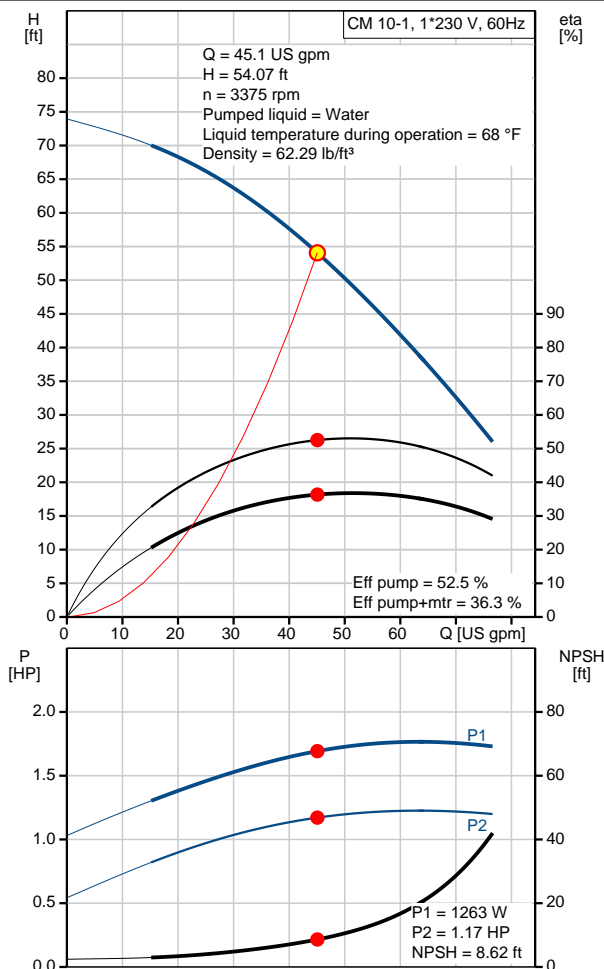
Phone:

Date:

3/30/2020

Count	Description
	Suitable for 50/60 Hz: N
	Phase: 1
	Rated voltage: 115/230 V
	Service factor: 1.00
	Rated current: 14.6/7.3 A
	Starting current: 320-320 %
	Rated speed: 3320 rpm
	Enclosure class (IEC 34-5): IP55
	Insulation class (IEC 85): F
	Built-in motor protection: NONE
	Others:
	Terminal box position: 12
	Minimum efficiency index, MEI $\eta_{\%}$: 0.52
	Net weight: 41.4 lb
	Gross weight: 46.9 lb
	Approvals: CE,CULUS,WRAS,ACS,TR,EAC,CURUS
	Country of origin: US
	Custom tariff no.: 8413.70.2040

Description	Value
General information:	
Product name:	CM 10-1 A-S-I-V-AQQV B-A-A-N
Product No.:	97568500
EAN:	5700318670616 5700318670616
Technical:	
Pump speed on which pump data are based:	3480 rpm
Actual calculated flow:	45.1 US gpm
Rated flow:	52.8 US gpm
Resulting head of the pump:	54.07 ft
Rated head:	52.89 ft
Impellers:	1
Code for shaft seal:	AQQV
Curve tolerance:	ISO9906:2012 3B
Pump version:	A
Model:	A
Materials:	
Pump housing:	Stainless steel EN 1.4301 AISI 304
Impeller:	Stainless steel EN 1.4301 AISI 304
Material code:	I
Code for rubber:	V
Installation:	
Range of ambient temperature:	-4 .. 131 °F
Maximum operating pressure:	232.06 psi
Max pressure at stated temperature:	232 psi / 194 °F 145 psi / 250 °F
Type of connection:	NPT(F)
Size of suction port:	1 1/2 inch
Size of outlet port:	1 1/2 inch
Outlet position:	12
Connect code:	S
Liquid:	
Pumped liquid:	Water
Liquid temperature range:	-4 .. 248 °F
Selected liquid temperature:	68 °F
Density:	62.29 lb/ft³
Electrical data:	
Motor standard:	NEMA
Frame size:	80B
Rated power - P2:	1.48 HP
Main frequency:	60 Hz
Suitable for 50/60 Hz:	N
Phase:	1
Rated voltage:	115/230 V
Service factor:	1.00
Rated current:	14.6/7.3 A
Starting current:	320-320 %
Rated speed:	3320 rpm
Enclosure class (IEC 34-5):	IP55
Insulation class (IEC 85):	F
Built-in motor protection:	NONE
Controls:	





Company name:

Created by:

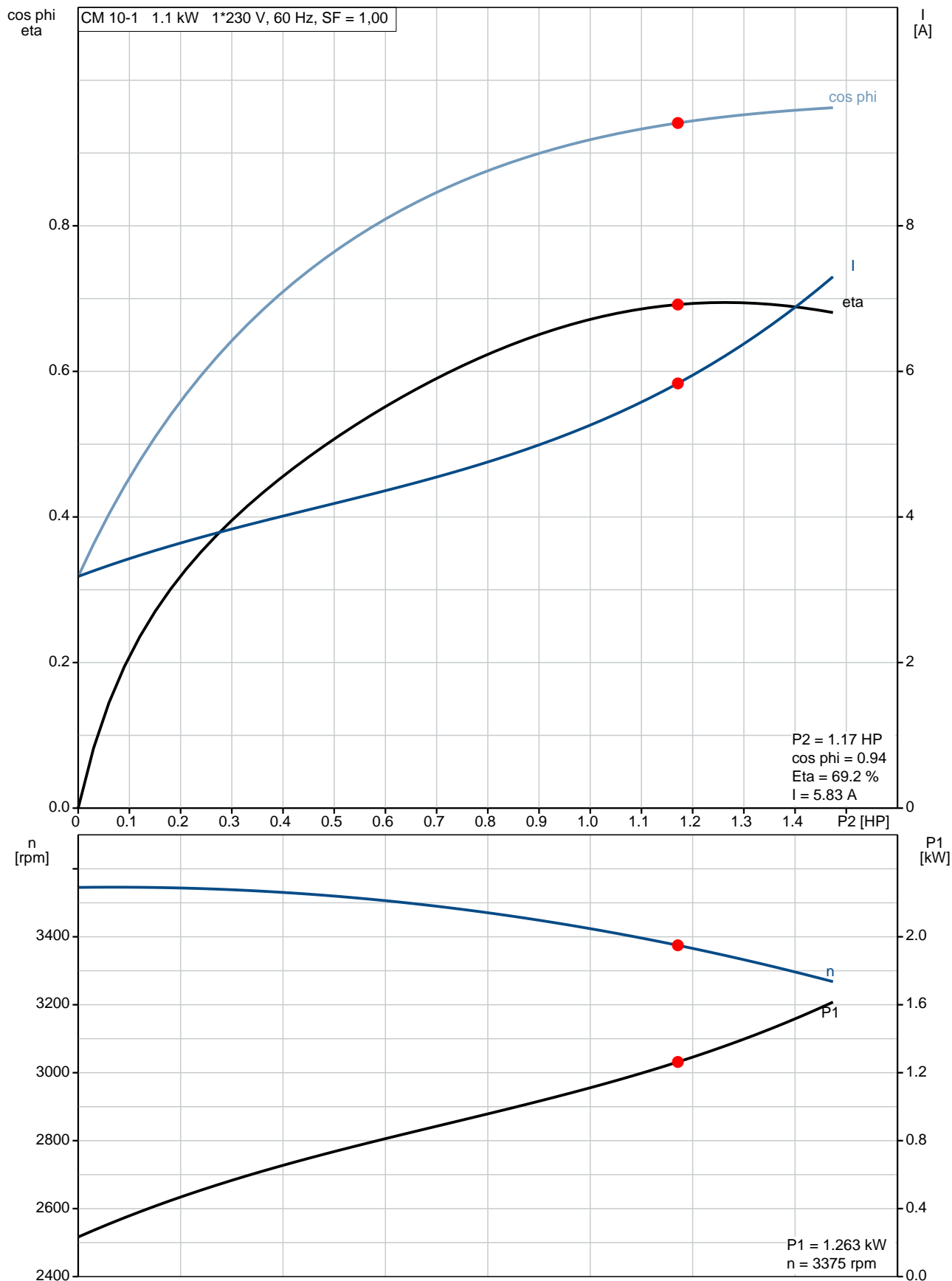
Phone:

Date:

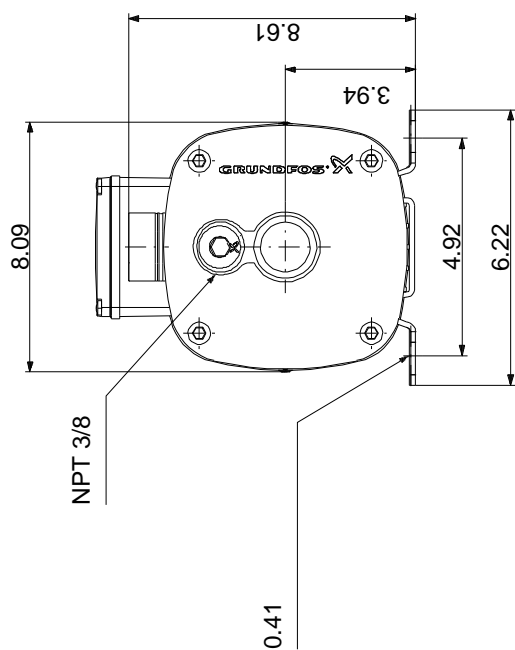
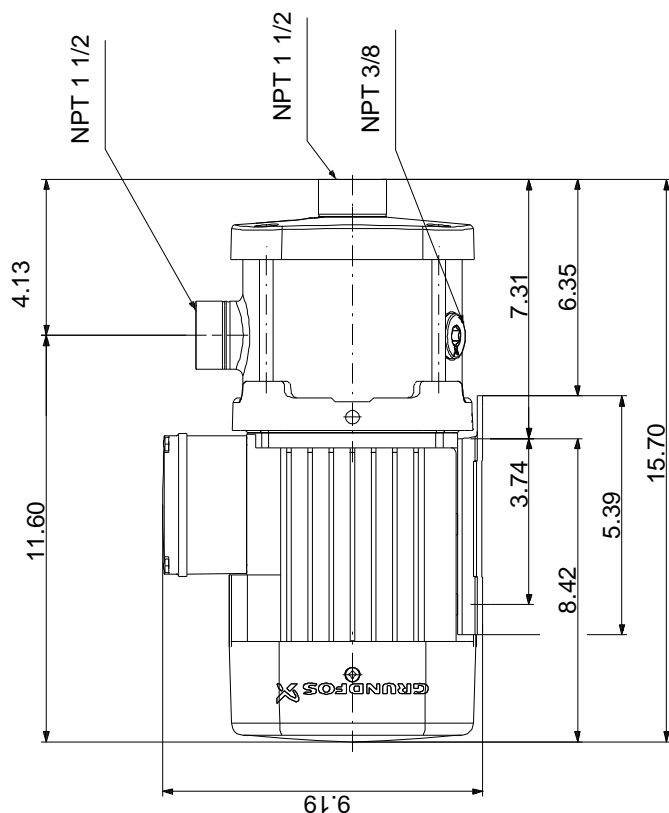
3/30/2020

Description	Value
Frequency converter:	NONE
Others:	
Terminal box position:	12
Minimum efficiency index, MEI â%â€:â€:	0.52
Net weight:	41.4 lb
Gross weight:	46.9 lb
Approvals:	CE,CULUS,WRAS,ACS,TR,EA C,CURUS
Country of origin:	US
Custom tariff no.:	8413.70.2040

97568500 CM 10-1 A-S-I-V-AQQV B-A-A-N 60 Hz



97568500 CM 10-1 A-S-I-V-AQQV B-A-A-N 60 Hz



Note! All units are in [in] unless otherwise stated.
Disclaimer: This simplified dimensional drawing does not show all details.

97568500 CM 10-1 A-S-I-V-AQQV B-A-A-N 60 Hz

SUITABLE FOR FIELD CONNECTION

