

PROJECT: _____	UNIT TAG: _____	QUANTITY: _____
REPRESENTATIVE: _____	TYPE OF SERVICE: _____	DATE: _____
ENGINEER: _____	SUBMITTED BY: _____	DATE: _____
CONTRACTOR: _____	APPROVED BY: _____	DATE: _____
	ORDER NO.: _____	DATE: _____

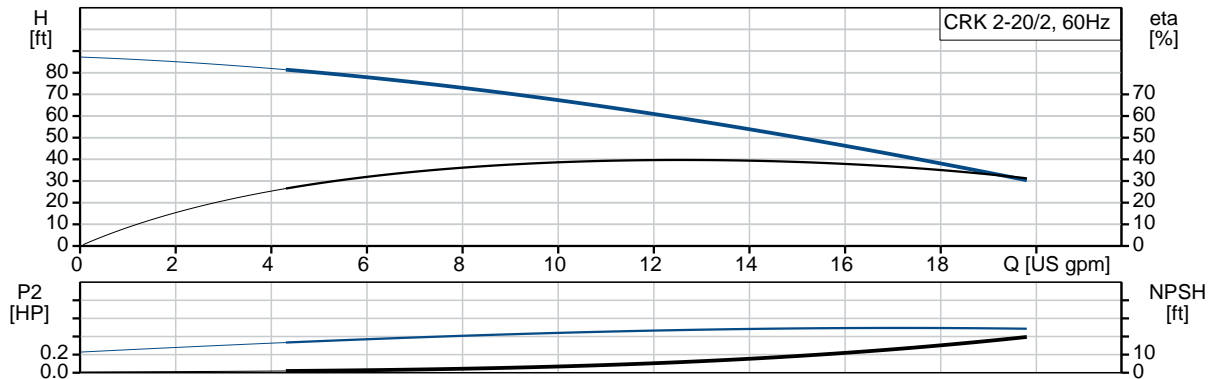


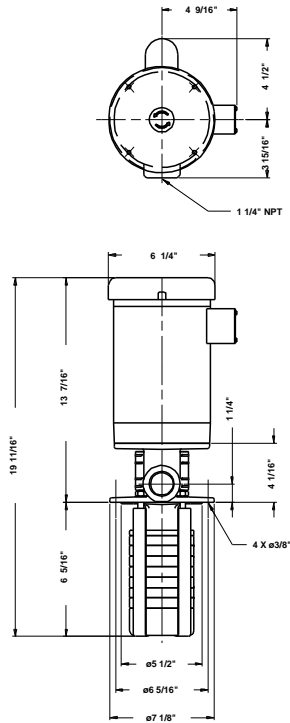
### CRK 2-20/2 U-W-A-AUUV

Coolant and condensate pumps

Product photo could vary from the actual product

Conditions of Service	Pump Data	Motor Data
Flow: _____	Liquid temperature range: 32 .. 194 °F	Rated power - P2: 0.5 HP
Head: _____	Maximum ambient temperature: 104 °F	Rated voltage: 115/208-230 V
Efficiency: _____	Approvals motor: UL Recognized Component, CSA	Main frequency: 60 Hz
Liquid: Water	Shaft seal: AUUV	Insulation class: B
Temperature: 68 °F	Pipe connection: 1 1/4" NPT	Motor protection: CONTACT
NPSH required: ft	Product number: 40Z97068	Thermal protection: internal
Viscosity: _____		Motor type: Baldor, TEFC
Specific Gravity: 1.000		Motor_efficiency: 62 %





**Materials:**

Pump head: Cast iron  
EN-JL1030  
ASTM A48-30 B  
Impeller: Stainless steel  
DIN W.-Nr. 1.4301  
AISI 304  
Material code: A

Count	Description																				
1	<p data-bbox="298 415 589 443"><b>CRK 2-20/2 U-W-A-AUUV</b></p> <div data-bbox="407 457 565 995" data-label="Image"> </div> <p data-bbox="686 982 1138 1010" style="text-align: right;">Product photo could vary from the actual product</p> <p data-bbox="298 1016 565 1043">Product No.: <a href="#">40Z97068</a></p> <p data-bbox="298 1045 813 1100">Multistage, immersible, self-priming, centrifugal pump for vertical installation in tanks etc.</p> <p data-bbox="298 1134 773 1161">The pump has the following characteristics:</p> <ul data-bbox="337 1163 883 1304" style="list-style-type: none"> <li>- Installation length according to DIN 5440.</li> <li>- Impellers, intermediate chambers and spline shaft are made of Stainless steel.</li> <li>- Mechanical shaft seal according to DIN 24960.</li> <li>- Power transmission via cast iron split coupling.</li> </ul> <p data-bbox="298 1369 670 1396">The motor is a 1-phase AC motor.</p> <p data-bbox="298 1430 383 1457"><b>Liquid:</b></p> <table data-bbox="298 1459 789 1577"> <tr> <td>Pumped liquid:</td> <td>Water</td> </tr> <tr> <td>Liquid temperature range:</td> <td>32 .. 194 °F</td> </tr> <tr> <td>Selected liquid temperature:</td> <td>68 °F</td> </tr> <tr> <td>Density:</td> <td>62.29 lb/ft<sup>3</sup></td> </tr> </table> <p data-bbox="298 1608 423 1635"><b>Technical:</b></p> <table data-bbox="298 1638 1024 1780"> <tr> <td>Rated flow:</td> <td>13.2 US gpm</td> </tr> <tr> <td>Rated head:</td> <td>59.06 ft</td> </tr> <tr> <td>Primary shaft seal:</td> <td>AUUV</td> </tr> <tr> <td>Approvals on motor nameplate:</td> <td>UL Recognized Component, CSA</td> </tr> <tr> <td>Curve tolerance:</td> <td>ISO 9906:1999 Annex A</td> </tr> </table> <p data-bbox="298 1812 415 1839"><b>Materials:</b></p> <table data-bbox="298 1841 760 1869"> <tr> <td>Pump head:</td> <td>Cast iron</td> </tr> </table>	Pumped liquid:	Water	Liquid temperature range:	32 .. 194 °F	Selected liquid temperature:	68 °F	Density:	62.29 lb/ft <sup>3</sup>	Rated flow:	13.2 US gpm	Rated head:	59.06 ft	Primary shaft seal:	AUUV	Approvals on motor nameplate:	UL Recognized Component, CSA	Curve tolerance:	ISO 9906:1999 Annex A	Pump head:	Cast iron
Pumped liquid:	Water																				
Liquid temperature range:	32 .. 194 °F																				
Selected liquid temperature:	68 °F																				
Density:	62.29 lb/ft <sup>3</sup>																				
Rated flow:	13.2 US gpm																				
Rated head:	59.06 ft																				
Primary shaft seal:	AUUV																				
Approvals on motor nameplate:	UL Recognized Component, CSA																				
Curve tolerance:	ISO 9906:1999 Annex A																				
Pump head:	Cast iron																				



Company name:

Created by:

Phone:

Date:

4/13/2020

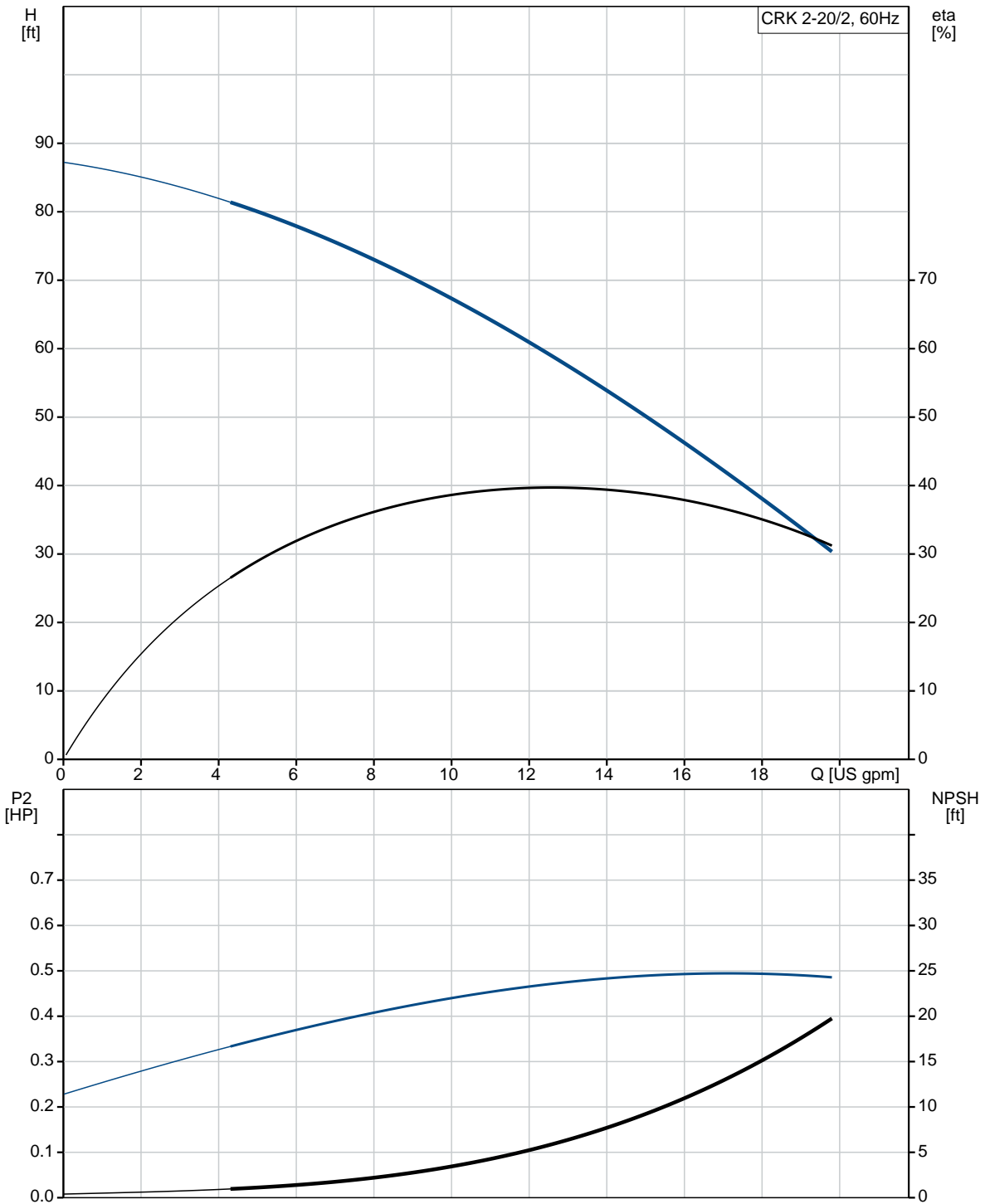
Count	Description
	EN-JL1030 ASTM A48-30 B Stainless steel DIN W.-Nr. 1.4301 AISI 304
	<b>Impeller:</b>
	<b>Installation:</b> Maximum ambient temperature: 104 °F Pipe connection: 1 1/4" NPT Flange size for motor: 56C
	<b>Electrical data:</b> Motor type: Baldor, TEFC Rated power - P2: 0.5 HP Main frequency: 60 Hz Rated voltage: 1 x 115/208-230 V Service factor: 1.6 Rated current: 7.4/4.1-3.7 A Starting current: 39/21.7-19.9 A Cos phi - power factor: 0.69 Rated speed: 3450 rpm Motor efficiency at full load: 62 % Number of poles: 2 Insulation class (IEC 85): B Motor Number: 85700002
	<b>Others:</b> Country of origin: US Custom tariff no.: 8413.70.2040



Company name:  
Created by:  
Phone:

Date: 4/13/2020

### 40Z97068 CRK 2-20/2 U-W-A-AUUV 60 Hz

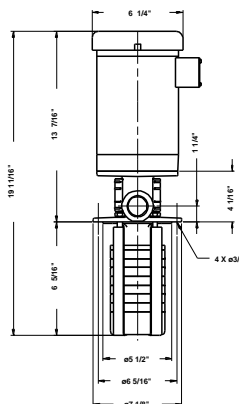
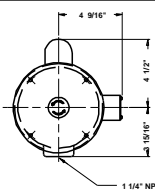
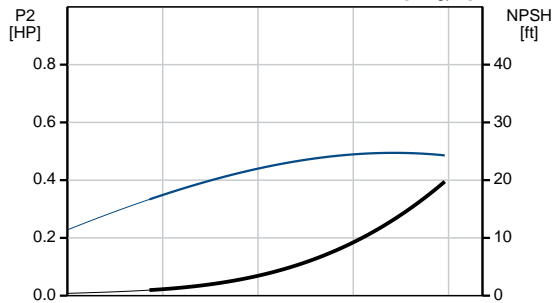
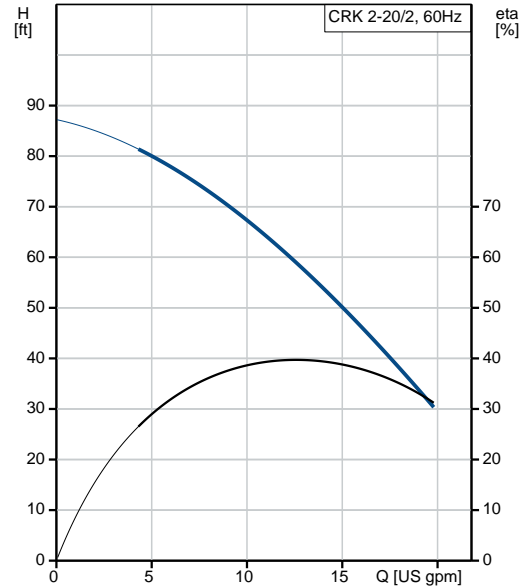




Company name:  
Created by:  
Phone:

Date: 4/13/2020

Description	Value
<b>General information:</b>	
Product name:	CRK 2-20/2 U-W-A-AUUV
Product No.:	40Z97068
EAN:	5700394546300
	5700394546300
<b>Technical:</b>	
Rated flow:	13.2 US gpm
Rated head:	59.06 ft
Stages:	2
Impellers:	2
Primary shaft seal:	AUUV
Approvals on motor nameplate:	UL Recognized Component, CSA
Curve tolerance:	ISO 9906:1999 Annex A
Pump Number:	40920062
Pump version:	U
<b>Materials:</b>	
Pump head:	Cast iron
	EN-JL1030
	ASTM A48-30 B
Impeller:	Stainless steel
	DIN W.-Nr. 1.4301
	AISI 304
Material code:	A
<b>Installation:</b>	
Maximum ambient temperature:	104 °F
Pipe connection:	1 1/4" NPT
Flange size for motor:	56C
Connect code:	W
<b>Liquid:</b>	
Pumped liquid:	Water
Liquid temperature range:	32 .. 194 °F
Selected liquid temperature:	68 °F
Density:	62.29 lb/ft <sup>3</sup>
<b>Electrical data:</b>	
Motor type:	Baldor, TEFC
Rated power - P2:	0.5 HP
KVA code:	K
Main frequency:	60 Hz
Rated voltage:	1 x 115/208-230 V
Service factor:	1.6
Rated current:	7.4/4.1-3.7 A
Starting current:	39/21.7-19.9 A
Load current:	9.1/4.9-4.6 A
Cos phi - power factor:	0.69
Rated speed:	3450 rpm
Motor efficiency at full load:	62 %
Number of poles:	2





Company name:  
Created by:  
Phone:

Date: 4/13/2020

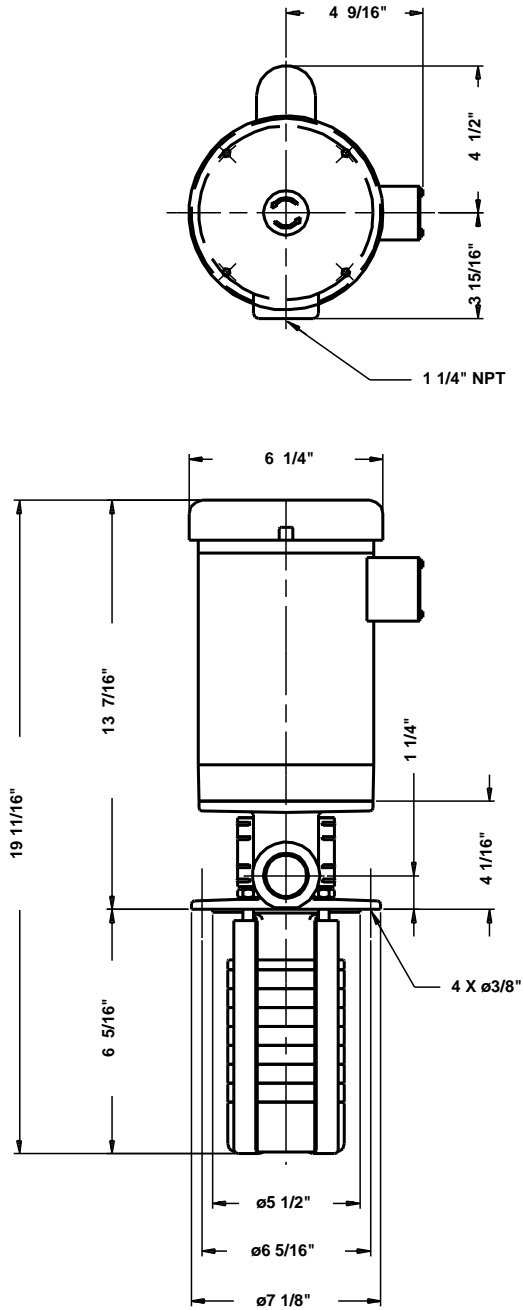
Description	Value
Insulation class (IEC 85):	B
Motor protection:	CONTACT
Thermal protec:	internal
Motor Number:	85700002
<b>Others:</b>	
Sales region:	Namreg
Country of origin:	US
Custom tariff no.:	8413.70.2040



Company name:  
Created by:  
Phone:

Date: 4/13/2020

### 40Z97068 CRK 2-20/2 U-W-A-AUUV 60 Hz



Note! All units are in [in] unless otherwise stated.  
Disclaimer: This simplified dimensional drawing does not show all details.