

PROJECT:	_____	UNIT TAG:	_____	QUANTITY:	_____
REPRESENTATIVE:	_____	TYPE OF SERVICE:	_____	DATE:	_____
ENGINEER:	_____	SUBMITTED BY:	_____	DATE:	_____
CONTRACTOR:	_____	APPROVED BY:	_____	DATE:	_____
		ORDER NO.:	_____	DATE:	_____

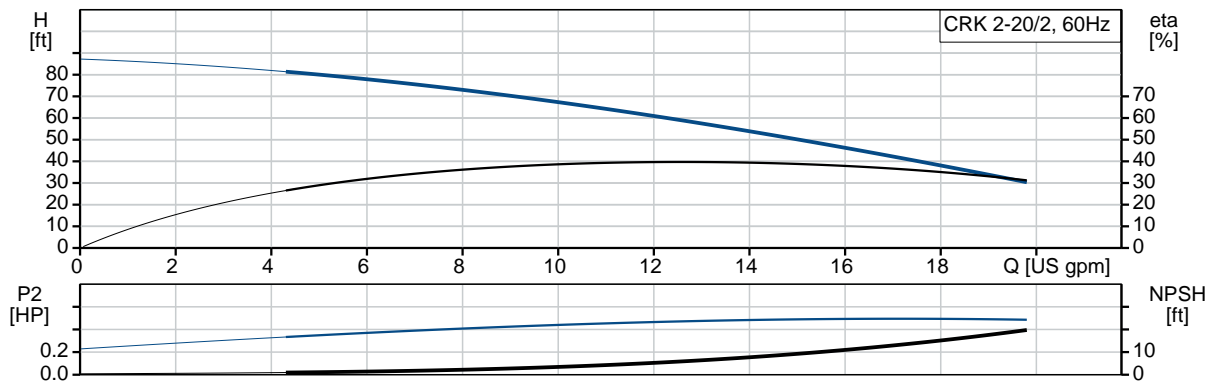


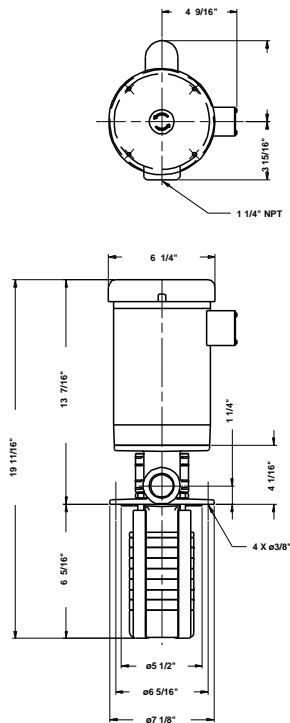
CRK 2-20/2 U-W-A-AUUV

Coolant and condensate pumps

Product photo could vary from the actual product

Conditions of Service	Pump Data	Motor Data
Flow: _____	Liquid temperature range: 32 .. 194 °F	Rated power - P2: 0.5 HP
Head: _____	Maximum ambient temperature: 104 °F	Rated voltage: 208-230/460 V
Efficiency: _____	Approvals motor: UL Recognized Component, CSA	Main frequency: 60 Hz
Liquid: Water	Shaft seal: AUUV	Insulation class: B
Temperature: 68 °F	Pipe connection: 1 1/4" NPT	Motor protection: NONE
NPSH required: ft	Product number: 40Z97101	Motor type: Baldor, TEFC
Viscosity: _____		Motor_efficiency: 68 %
Specific Gravity: 1.000		






Materials:

Pump head: Cast iron
EN-JL1030
ASTM A48-30 B

Impeller: Stainless steel
DIN W.-Nr. 1.4301
AISI 304

Material code: A

Count	Description																				
1	<p>CRK 2-20/2 U-W-A-AUUV</p>  <p>Product photo could vary from the actual product</p> <p>Product No.: 40Z97101</p> <p>Multistage, immersible, self-priming, centrifugal pump for vertical installation in tanks etc.</p> <p>The pump has the following characteristics:</p> <ul style="list-style-type: none"> - Installation length according to DIN 5440. - Impellers, intermediate chambers and spline shaft are made of Stainless steel. - Mechanical shaft seal according to DIN 24960. - Power transmission via cast iron split coupling. <p>The motor is a 3-phase AC motor.</p> <p>Liquid:</p> <table> <tr> <td>Pumped liquid:</td><td>Water</td></tr> <tr> <td>Liquid temperature range:</td><td>32 .. 194 °F</td></tr> <tr> <td>Selected liquid temperature:</td><td>68 °F</td></tr> <tr> <td>Density:</td><td>62.29 lb/ft³</td></tr> </table> <p>Technical:</p> <table> <tr> <td>Rated flow:</td><td>13.2 US gpm</td></tr> <tr> <td>Rated head:</td><td>59.06 ft</td></tr> <tr> <td>Primary shaft seal:</td><td>AUUV</td></tr> <tr> <td>Approvals on motor nameplate:</td><td>UL Recognized Component, CSA</td></tr> <tr> <td>Curve tolerance:</td><td>ISO 9906:1999 Annex A</td></tr> </table> <p>Materials:</p> <table> <tr> <td>Pump head:</td><td>Cast iron</td></tr> </table>	Pumped liquid:	Water	Liquid temperature range:	32 .. 194 °F	Selected liquid temperature:	68 °F	Density:	62.29 lb/ft³	Rated flow:	13.2 US gpm	Rated head:	59.06 ft	Primary shaft seal:	AUUV	Approvals on motor nameplate:	UL Recognized Component, CSA	Curve tolerance:	ISO 9906:1999 Annex A	Pump head:	Cast iron
Pumped liquid:	Water																				
Liquid temperature range:	32 .. 194 °F																				
Selected liquid temperature:	68 °F																				
Density:	62.29 lb/ft³																				
Rated flow:	13.2 US gpm																				
Rated head:	59.06 ft																				
Primary shaft seal:	AUUV																				
Approvals on motor nameplate:	UL Recognized Component, CSA																				
Curve tolerance:	ISO 9906:1999 Annex A																				
Pump head:	Cast iron																				



Company name:

Created by:

Phone:

Date:

4/13/2020

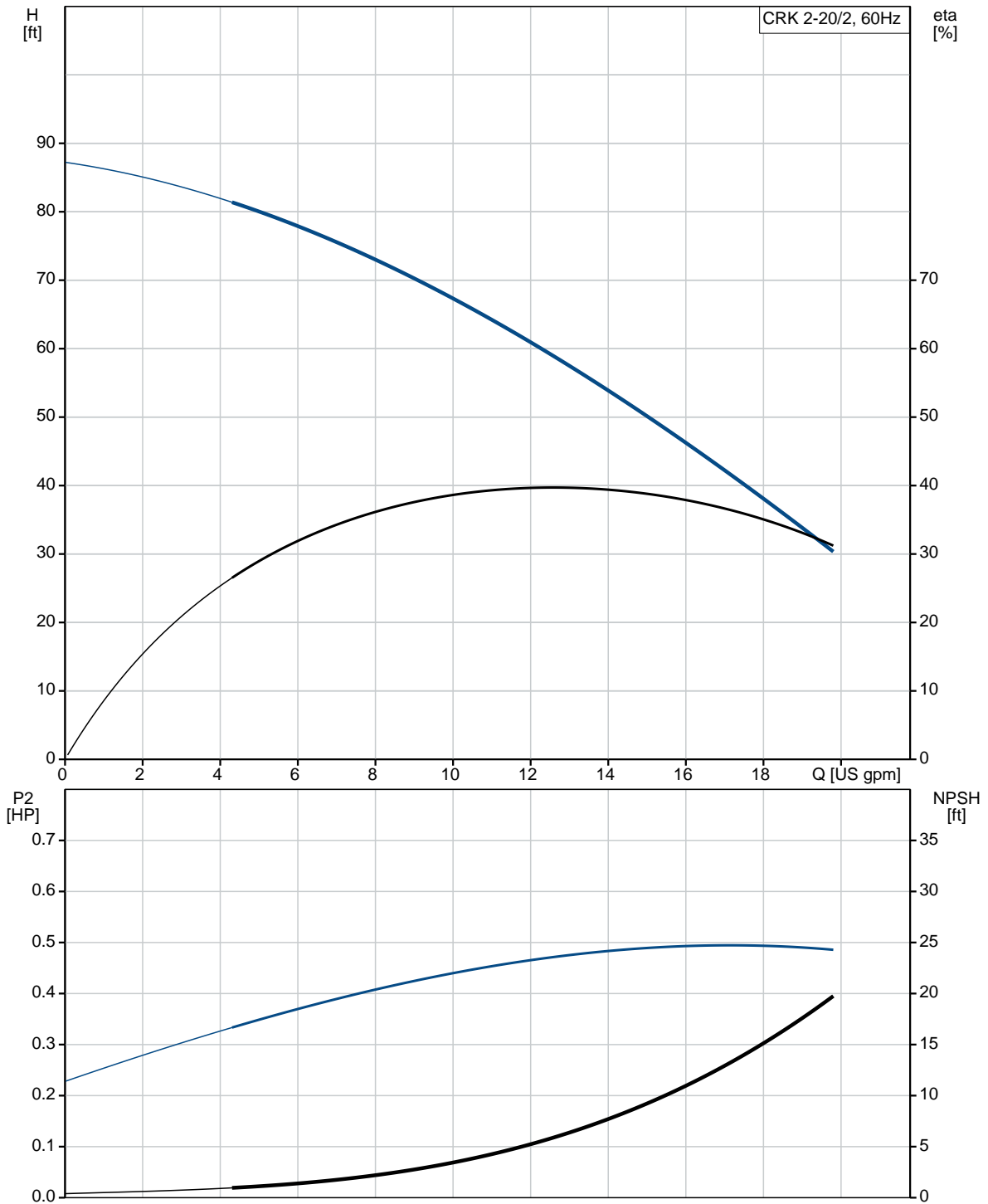
Count	Description
	EN-JL1030 ASTM A48-30 B Stainless steel DIN W.-Nr. 1.4301 AISI 304
	Impeller:
	Installation:
	Maximum ambient temperature: 104 °F
	Pipe connection: 1 1/4" NPT
	Flange size for motor: 56C
	Electrical data:
	Motor type: Baldor, TEFC
	Rated power - P2: 0.5 HP
	Main frequency: 60 Hz
	Rated voltage: 3 x 208-230/460 V
	Service factor: 1.25
	Rated current: 2.1-2/1 A
	Starting current: 13.1-12/6 A
	Cos phi - power factor: 0.63
	Rated speed: 3450 rpm
	Motor efficiency at full load: 68 %
	Number of poles: 2
	Insulation class (IEC 85): B
	Motor Number: 85600002
	Others:
	Country of origin: US
	Custom tariff no.: 8413.70.2040



Company name:
Created by:
Phone:

Date: 4/13/2020

40Z97101 CRK 2-20/2 U-W-A-AUUV 60 Hz





Company name:

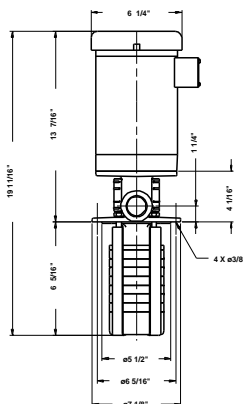
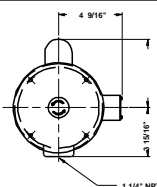
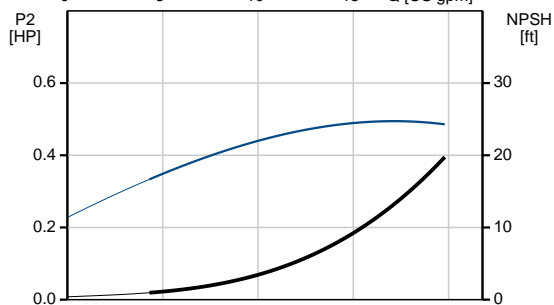
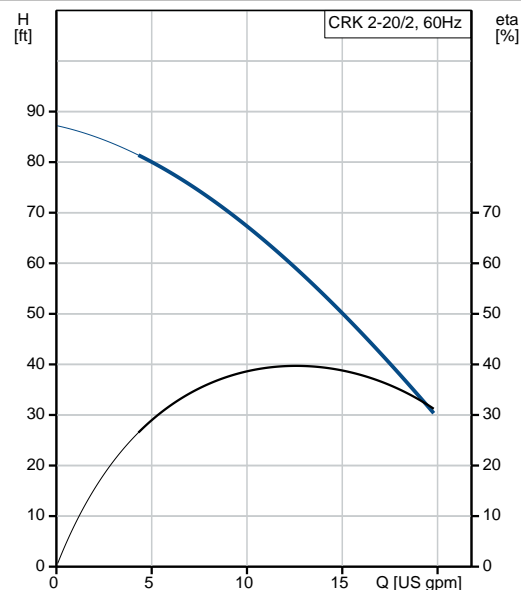
Created by:

Phone:

Date:

4/13/2020

Description	Value
General information:	
Product name:	CRK 2-20/2 U-W-A-AUUV
Product No.:	40Z97101
EAN:	5700394546416
	5700394546416
Technical:	
Rated flow:	13.2 US gpm
Rated head:	59.06 ft
Stages:	2
Impellers:	2
Primary shaft seal:	AUUV
Approvals on motor nameplate:	UL Recognized Component, CSA
Curve tolerance:	ISO 9906:1999 Annex A
Pump Number:	40920062
Pump version:	U
Materials:	
Pump head:	Cast iron
	EN-JL1030
	ASTM A48-30 B
Impeller:	Stainless steel
	DIN W.-Nr. 1.4301
	AISI 304
Material code:	A
Installation:	
Maximum ambient temperature:	104 °F
Pipe connection:	1 1/4" NPT
Flange size for motor:	56C
Connect code:	W
Liquid:	
Pumped liquid:	Water
Liquid temperature range:	32 .. 194 °F
Selected liquid temperature:	68 °F
Density:	62.29 lb/ft ³
Electrical data:	
Motor type:	Baldor, TEFC
Rated power - P2:	0.5 HP
KVA code:	J
Main frequency:	60 Hz
Rated voltage:	3 x 208-230/460 V
Service factor:	1.25
Rated current:	2.1-2/1 A
Starting current:	13.1-12/6 A
Load current:	2.6-2.4/1.2 A
Cos phi - power factor:	0.63
Rated speed:	3450 rpm
Motor efficiency at full load:	68 %
Number of poles:	2





Company name:
Created by:
Phone:

Date: 4/13/2020

Description	Value
Insulation class (IEC 85):	B
Motor protection:	NONE
Motor Number:	85600002
Others:	
Sales region:	Namreg
Country of origin:	US
Custom tariff no.:	8413.70.2040



Company name:

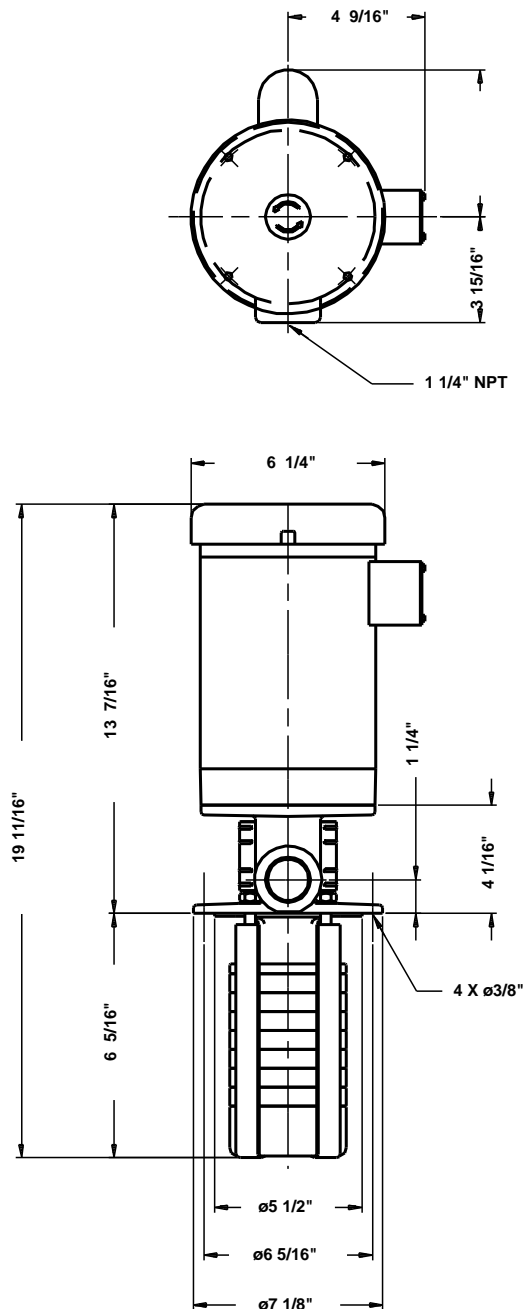
Created by:

Phone:

Date:

4/13/2020

40Z97101 CRK 2-20/2 U-W-A-AUUV 60 Hz



Note! All units are in [in] unless otherwise stated.
Disclaimer: This simplified dimensional drawing does not show all details.