

PROJECT:	_____	UNIT TAG:	_____	QUANTITY:	_____
REPRESENTATIVE:	_____	TYPE OF SERVICE:	_____	DATE:	_____
ENGINEER:	_____	SUBMITTED BY:	_____	DATE:	_____
CONTRACTOR:	_____	APPROVED BY:	_____	DATE:	_____
	_____	ORDER NO.:	_____	DATE:	_____

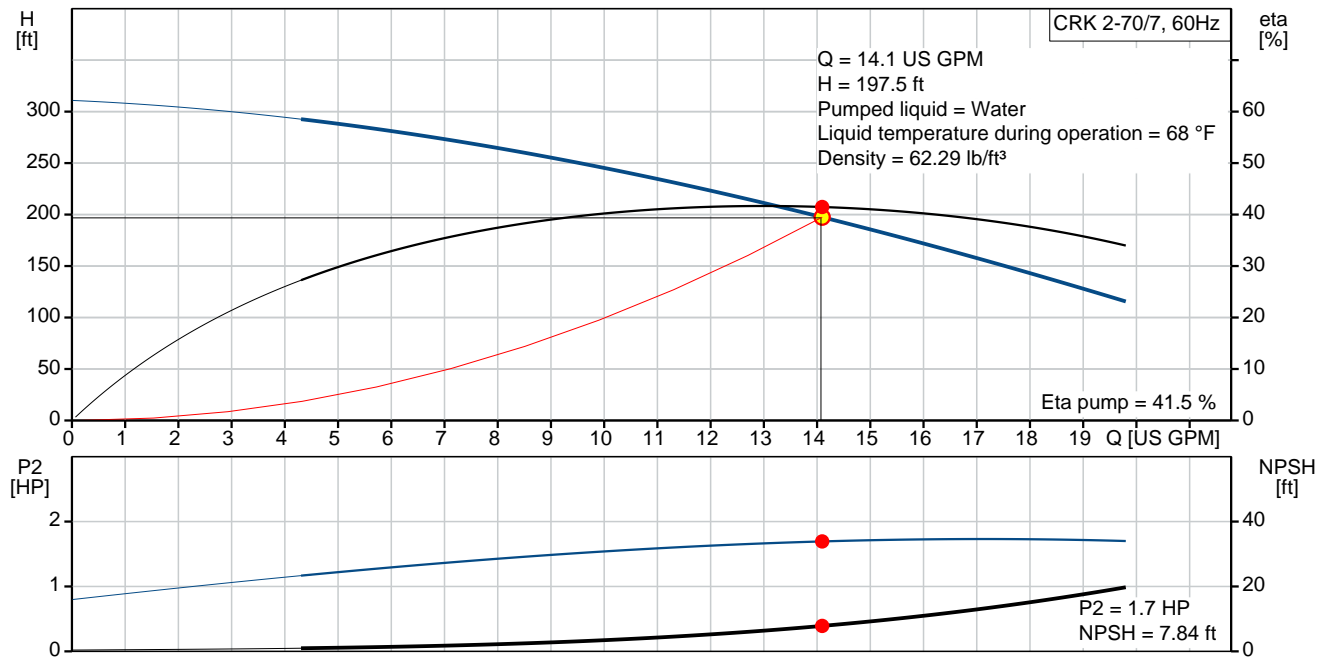


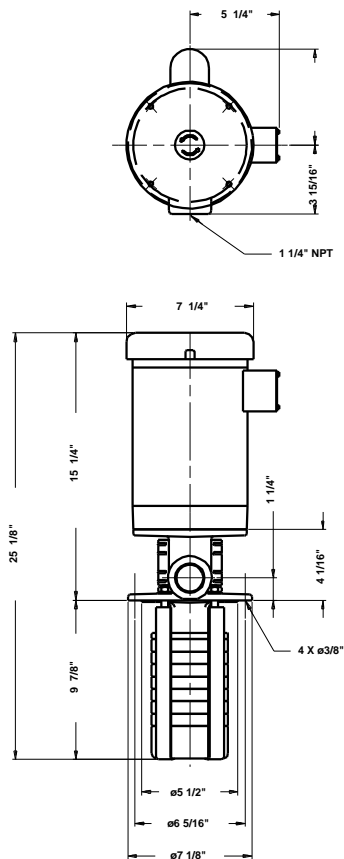
## CRK 2-70/7 U-W-A-AUUV

Coolant pumps

Note! Product picture may differ from actual product

Conditions of Service		Pump Data		Motor Data	
Flow:	14.1 US GPM	Liquid temperature range:	32 .. 194 °F	Rated power - P2:	2 HP
Head:	197.5 ft	Maximum ambient temperature:	104 °F	Rated voltage:	208-230/460 V
Efficiency:	_____	Approvals motor:	UL Recognized Component, CSA	Mains frequency:	60 Hz
Liquid:	Water	Shaft seal:	AUUV	Insulation class:	B
Temperature:	68 °F	Pipe connection:	1 1/4" NPT	Motor protection:	NONE
NPSH required:	7.84 ft	Product number:	40Z97106	Motor type:	Baldor, TEFC
Viscosity:	_____			Motor_efficiency:	78.5 %
Specific Gravity:	1.000				






**Materials:**

Pump head: Cast iron  
EN-JL1030  
ASTM A48-30 B

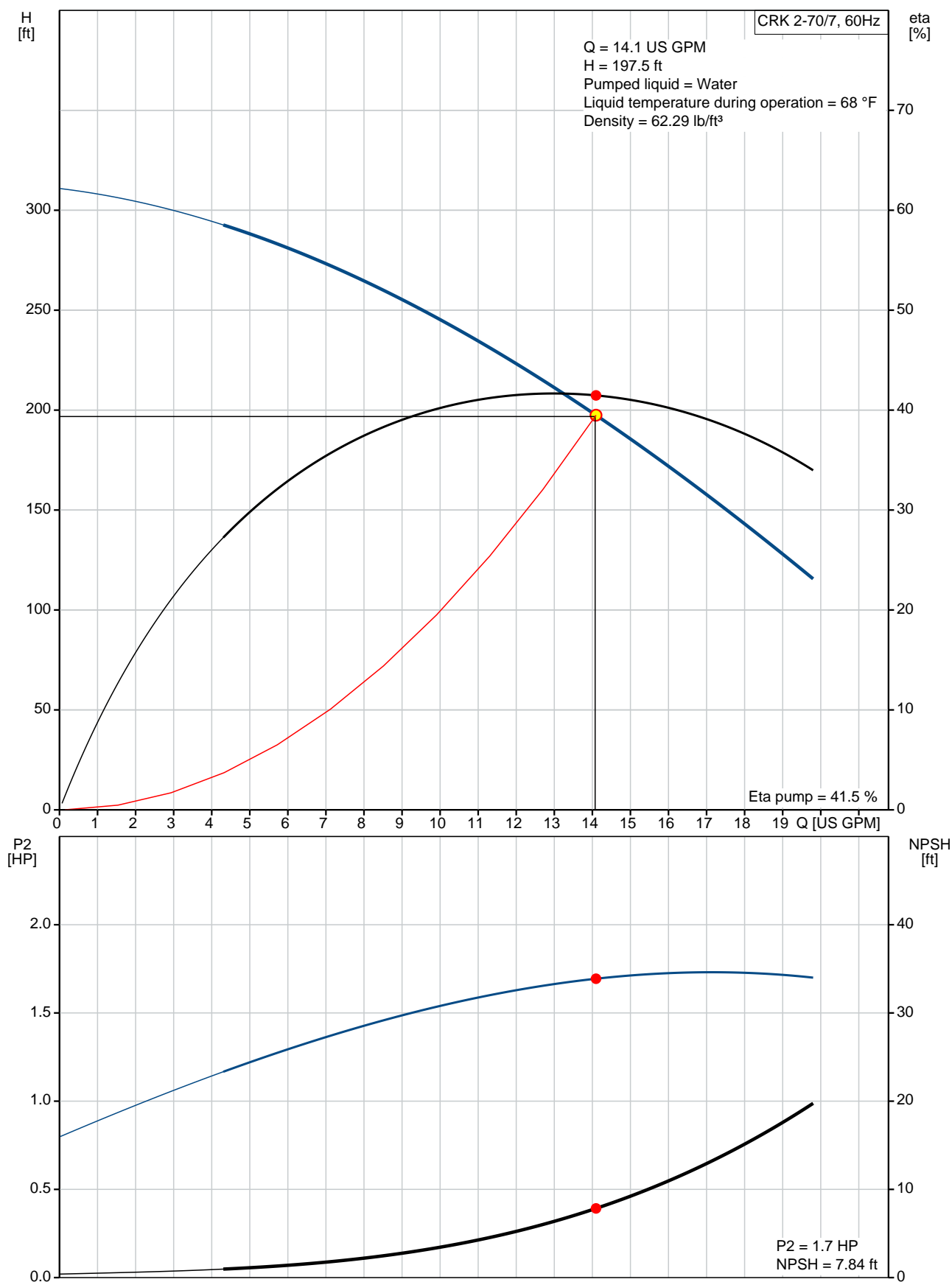
Impeller: Stainless steel  
DIN W.-Nr. 1.4301  
AISI 304

Material code: A

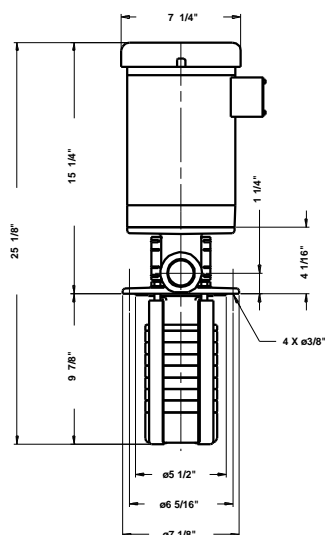
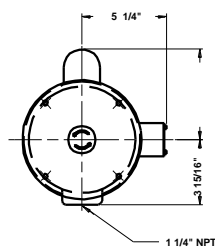
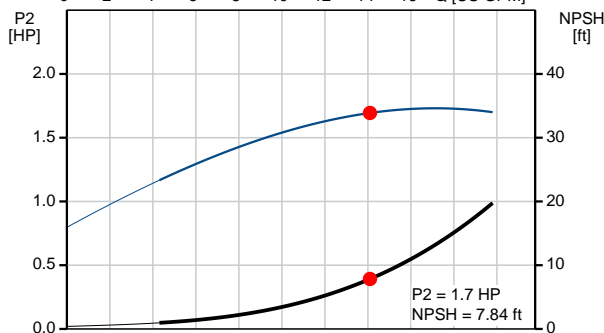
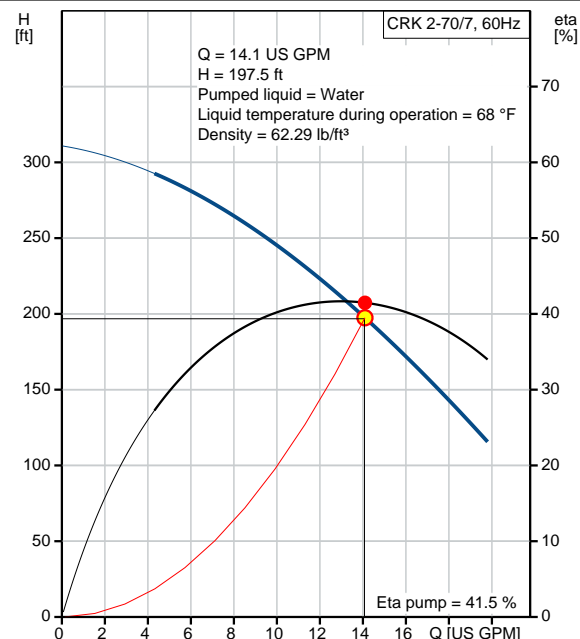
Qty.	Description																										
1	<p><b>CRK 2-70/7 U-W-A-AUUV</b></p>  <p><b>Note! Product picture may differ from actual product</b></p> <p>Product No.: <a href="#">40Z97106</a></p> <p>Multistage, immersible, self-priming, centrifugal pump for vertical installation in tanks etc.</p> <p>The pump has the following characteristics:</p> <ul style="list-style-type: none"> <li>- Installation length according to DIN 5440.</li> <li>- Impellers, intermediate chambers and spline shaft are made of Stainless steel.</li> <li>- Mechanical shaft seal according to EN 12756.</li> <li>- Power transmission via cast iron split coupling.</li> </ul> <p>The motor is a 3-phase AC motor. Immersion depth: 9.84 in</p> <p><b>Liquid:</b></p> <table> <tr> <td>Pumped liquid:</td><td>Water</td></tr> <tr> <td>Liquid temperature range:</td><td>32 .. 194 °F</td></tr> <tr> <td>Selected liquid temperature:</td><td>68 °F</td></tr> <tr> <td>Density:</td><td>62.29 lb/ft³</td></tr> </table> <p><b>Technical:</b></p> <table> <tr> <td>Actual calculated flow:</td><td>14.1 US GPM</td></tr> <tr> <td>Resulting head of the pump:</td><td>197.5 ft</td></tr> <tr> <td>Primary shaft seal:</td><td>AUUV</td></tr> <tr> <td>Approvals on motor nameplate:</td><td>UL Recognized Component, CSA</td></tr> <tr> <td>Curve tolerance:</td><td>ISO 9906:1999 Annex A</td></tr> </table> <p><b>Materials:</b></p> <table> <tr> <td>Pump head:</td><td>Cast iron EN-JL1030 ASTM A48-30 B</td></tr> <tr> <td>Impeller:</td><td>Stainless steel DIN W.-Nr. 1.4301 AISI 304</td></tr> </table> <p><b>Installation:</b></p> <table> <tr> <td>Maximum ambient temperature:</td><td>104 °F</td></tr> <tr> <td>Pipe connection:</td><td>1 1/4" NPT</td></tr> </table>	Pumped liquid:	Water	Liquid temperature range:	32 .. 194 °F	Selected liquid temperature:	68 °F	Density:	62.29 lb/ft³	Actual calculated flow:	14.1 US GPM	Resulting head of the pump:	197.5 ft	Primary shaft seal:	AUUV	Approvals on motor nameplate:	UL Recognized Component, CSA	Curve tolerance:	ISO 9906:1999 Annex A	Pump head:	Cast iron EN-JL1030 ASTM A48-30 B	Impeller:	Stainless steel DIN W.-Nr. 1.4301 AISI 304	Maximum ambient temperature:	104 °F	Pipe connection:	1 1/4" NPT
Pumped liquid:	Water																										
Liquid temperature range:	32 .. 194 °F																										
Selected liquid temperature:	68 °F																										
Density:	62.29 lb/ft³																										
Actual calculated flow:	14.1 US GPM																										
Resulting head of the pump:	197.5 ft																										
Primary shaft seal:	AUUV																										
Approvals on motor nameplate:	UL Recognized Component, CSA																										
Curve tolerance:	ISO 9906:1999 Annex A																										
Pump head:	Cast iron EN-JL1030 ASTM A48-30 B																										
Impeller:	Stainless steel DIN W.-Nr. 1.4301 AISI 304																										
Maximum ambient temperature:	104 °F																										
Pipe connection:	1 1/4" NPT																										

Qty.	Description
	Flange size for motor: 56C
	<b>Electrical data:</b>
	Motor type: Baldor, TEFC
	Rated power - P2: 2 HP
	Mains frequency: 60 Hz
	Rated voltage: 3 x 208-230/460 V
	Service factor: 1.15
	Rated current: 5.7-5.4/2.7 A
	Starting current: 38.7-35/17.5 A
	Cos phi - power factor: 0.93
	Rated speed: 3450 rpm
	Motor efficiency at full load: 78.5 %
	Number of poles: 2
	Insulation class (IEC 85): B
	Motor No: 85600006
	<b>Others:</b>
	Country of origin: US
	Custom tariff no.: 8413.70.2040

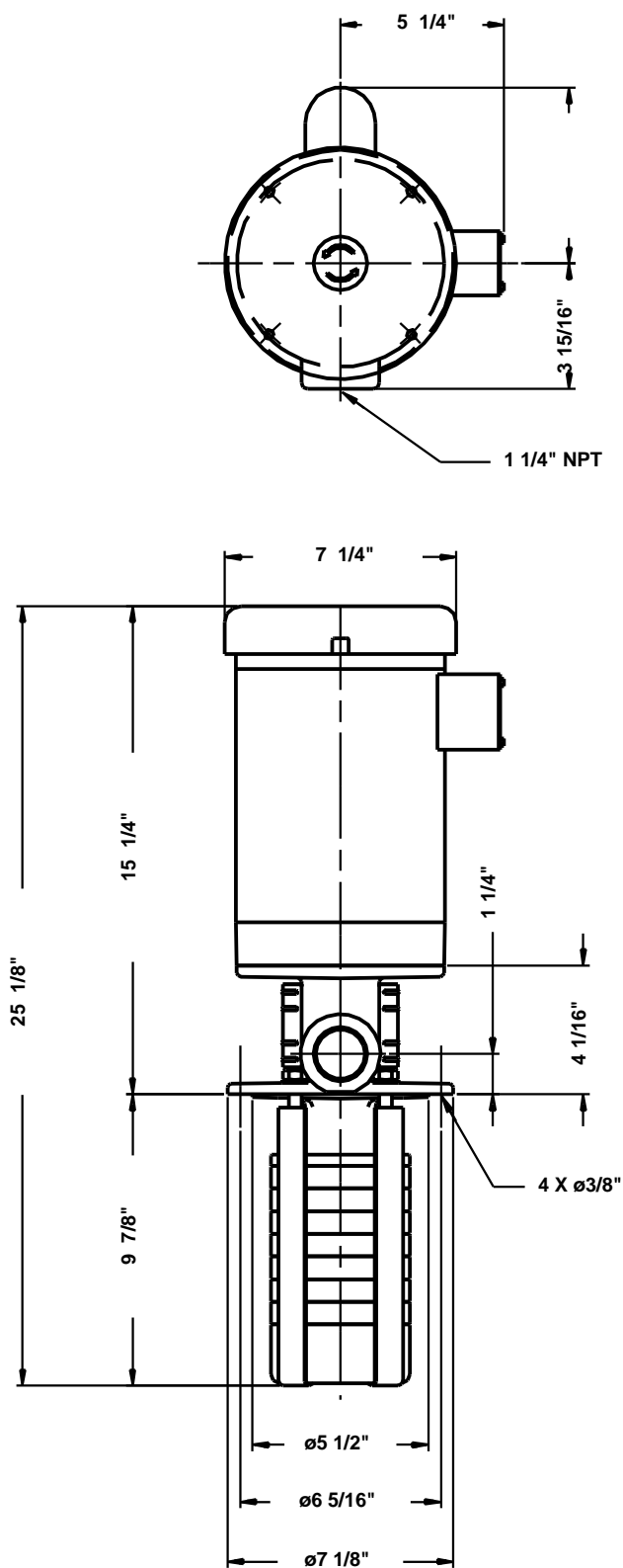
## 40Z97106 CRK 2-70/7 U-W-A-AUUV 60 Hz



Description	Value
<b>General information:</b>	
Product name:	CRK 2-70/7 U-W-A-AUUV
Product No:	40Z97106
EAN number:	5700394546447
	5700394546447
<b>Technical:</b>	
Actual calculated flow:	14.1 US GPM
Resulting head of the pump:	197.5 ft
Stages:	7
Impellers:	7
Primary shaft seal:	AUUV
Approvals on motor nameplate:	UL Recognized Component, CSA
Curve tolerance:	ISO 9906:1999 Annex A
Pump No:	40920067
Pump version:	U
<b>Materials:</b>	
Pump head:	Cast iron
	EN-JL1030
	ASTM A48-30 B
Impeller:	Stainless steel
	DIN W.-Nr. 1.4301
	AISI 304
Material code:	A
<b>Installation:</b>	
Maximum ambient temperature:	104 °F
Pipe connection:	1 1/4" NPT
Flange size for motor:	56C
Connect code:	W
<b>Liquid:</b>	
Pumped liquid:	Water
Liquid temperature range:	32 .. 194 °F
Selected liquid temperature:	68 °F
Density:	62.29 lb/ft³
<b>Electrical data:</b>	
Motor type:	Baldor, TEFC
Rated power - P2:	2 HP
KVA code:	H
Mains frequency:	60 Hz
Rated voltage:	3 x 208-230/460 V
Service factor:	1.15
Rated current:	5.7-5.4/2.7 A
Starting current:	38.7-35/17.5 A
Load current:	6.5-6.2/3.1 A
Cos phi - power factor:	0.93
Rated speed:	3450 rpm
Motor efficiency at full load:	78.5 %
Number of poles:	2
Insulation class (IEC 85):	B
Motor protec:	NONE
Motor No:	85600006
<b>Others:</b>	
Sales region:	Namreg
Country of origin:	US
Custom tariff no.:	8413.70.2040



## 40Z97106 CRK 2-70/7 U-W-A-AUUV 60 Hz



Note! All units are in [in] unless others are stated.  
Disclaimer: This simplified dimensional drawing does not show all details.