

PROJECT:	_____	UNIT TAG:	_____	QUANTITY:	_____
REPRESENTATIVE:	_____	TYPE OF SERVICE:	_____	DATE:	_____
ENGINEER:	_____	SUBMITTED BY:	_____	DATE:	_____
CONTRACTOR:	_____	APPROVED BY:	_____	DATE:	_____
	_____	ORDER NO.:	_____	DATE:	_____

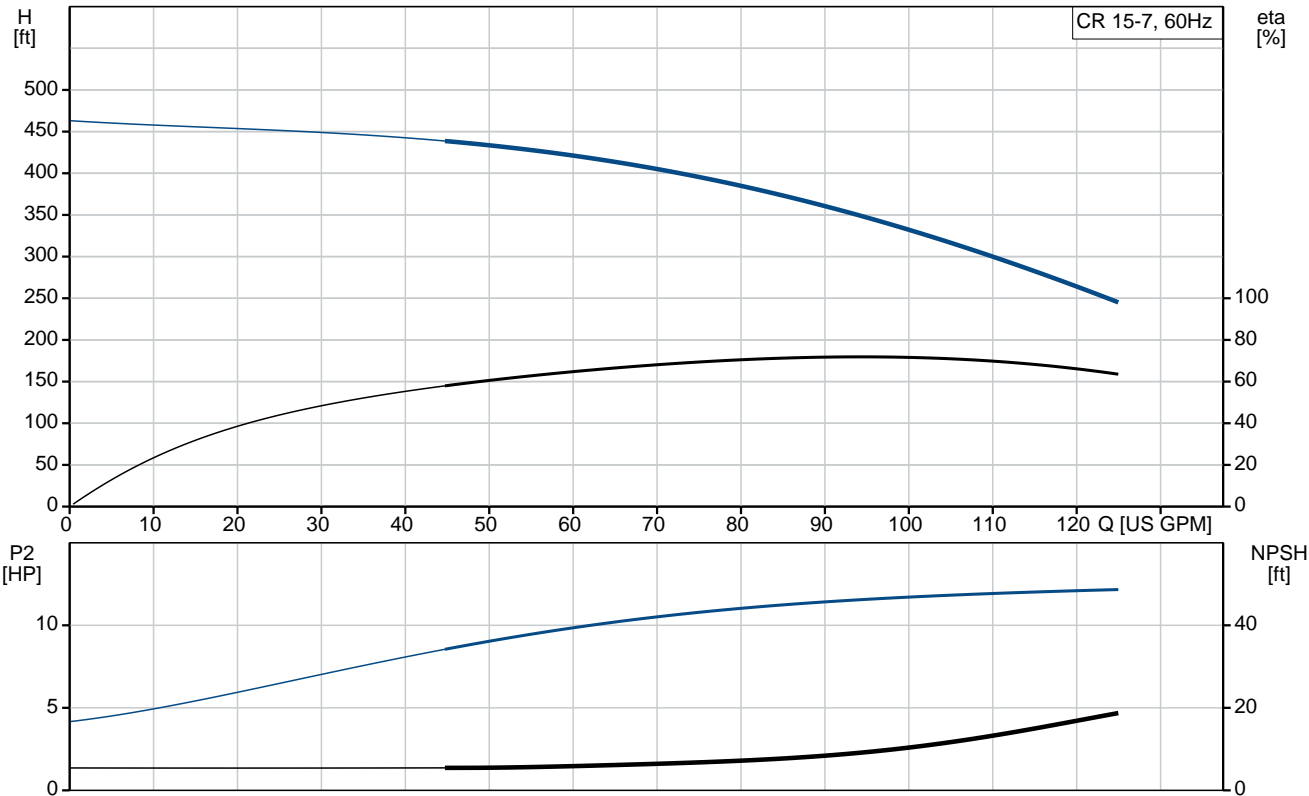


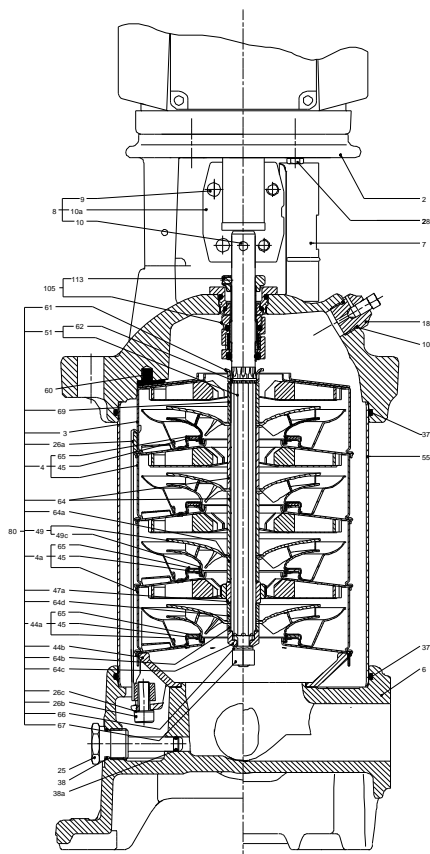
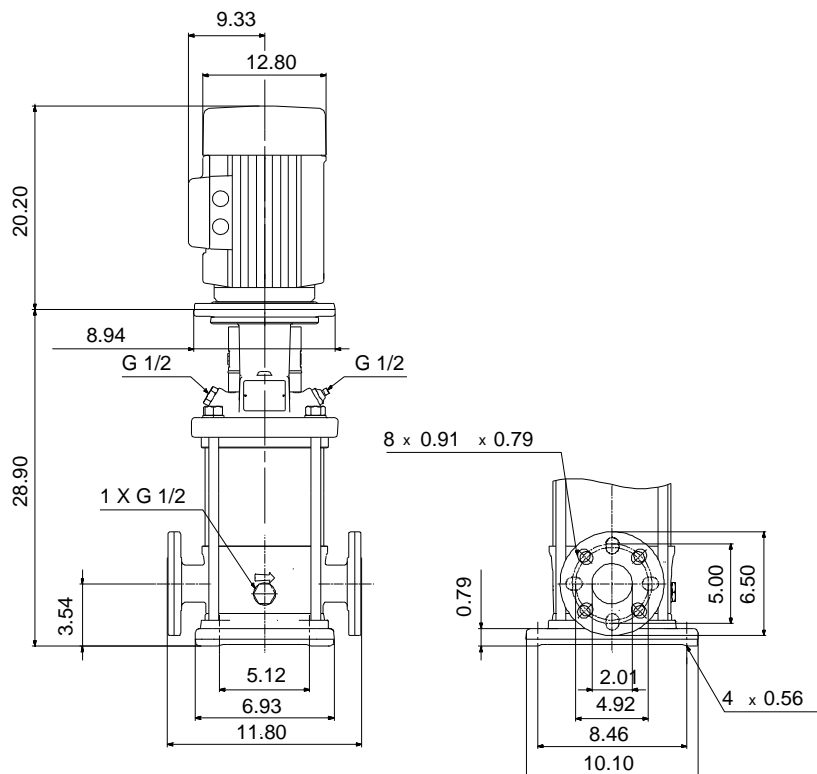
**CR 15-7 A-GJ-A-E-HQQE**

Vertical, multistage centrifugal pump with suction and discharge ports on the same level. The pump head and base are in cast iron - all other wetted parts are in stainless steel (EN 1.4301)

Note! Product picture may differ from actual product

Conditions of Service	Pump Data	Motor Data
Flow: _____	Max pressure at stated temp: 232 psi / 250 °F	Rated power - P2: 15 HP
Head: _____	Liquid temperature range: -4 .. 248 °F	Rated voltage: 208-230/460 V
Efficiency: _____	Maximum ambient temperature: 104 °F	Mains frequency: 60 Hz
Liquid: Water	Approvals: CURUS	Enclosure class: IP54
Temperature: 68 °F	Shaft seal: HQQE	Insulation class: F
NPSH required: ft	Product number: 96523618	Motor protection: NONE
Viscosity: _____		Motor type: BALDOR
Specific Gravity: 1.000		Motor_efficiency: 91-91 %






**Materials:**

Base: Cast iron  
EN 1561 EN-GJL-200  
ASTM A48-25B

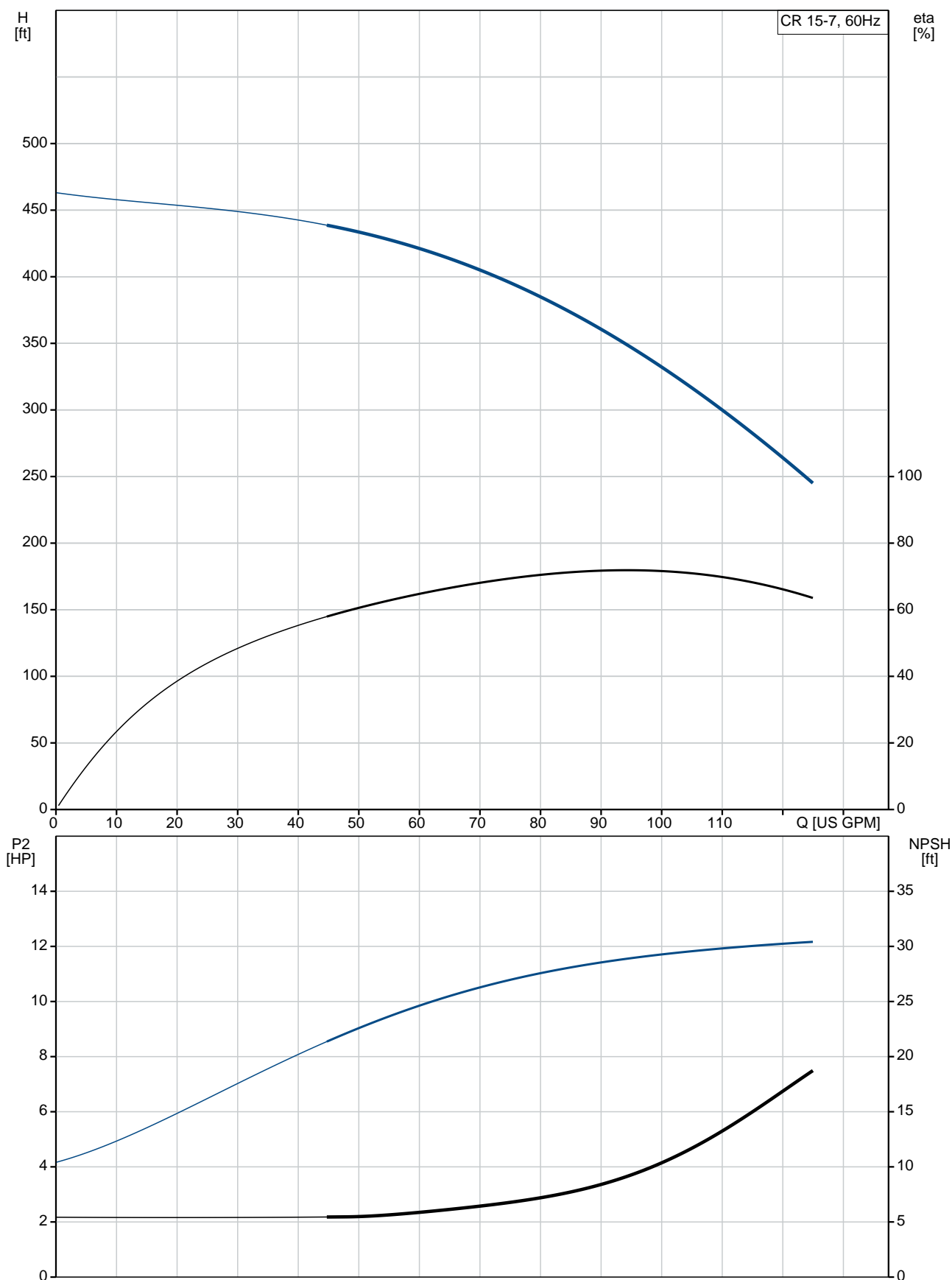
Impeller: Stainless steel  
AISI 304  
EN 1.4301

Material code: A  
Code for rubber: E

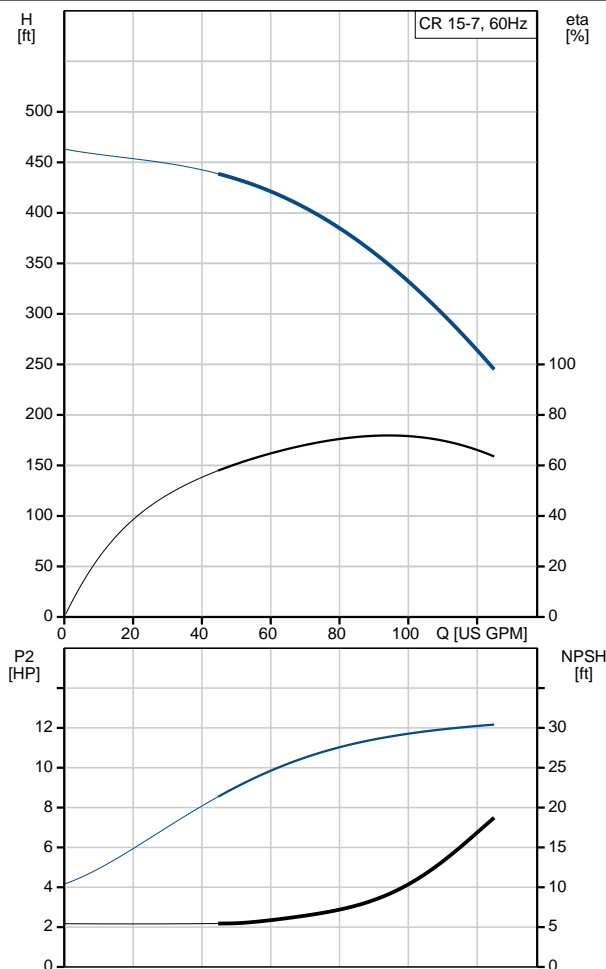
Qty.	Description
1	<p><b>CR 15-7 A-GJ-A-E-HQQE</b></p>  <p>Product No.: <a href="#">96523618</a></p> <p>Vertical, multistage centrifugal pump with inlet and outlet ports on same the level (inline). The pump head and base are in cast iron – all other wetted parts are in stainless steel. A cartridge shaft seal ensures high reliability, safe handling, and easy access and service. Power transmission is via a rigid split coupling. Pipe connection is via combined ANSI-JIS flanges.</p> <p>The pump is fitted with a 3-phase, fan-cooled asynchronous motor.</p> <p><b>Liquid:</b>  Pumped liquid: Water  Liquid temperature range: -4 .. 248 °F  Selected liquid temperature: 68 °F  Density: 62.29 lb/ft³</p> <p><b>Technical:</b>  Pump speed on which pump data are based: 3444 rpm  Rated flow: 90.3 US GPM  Rated head: 359.9 ft  Actual impeller diameter: 4.13 in  Pump orientation: Vertical  Shaft seal arrangement: Single  Code for shaft seal: HQQE  Approvals on nameplate: CURUS  Curve tolerance: ISO9906:2012 3B</p> <p><b>Materials:</b>  Base: Cast iron  EN 1561 EN-GJL-200  ASTM A48-25B  Impeller: Stainless steel  EN 1.4301  AISI 304  Bearing: SIC</p> <p><b>Installation:</b>  Maximum ambient temperature: 104 °F  Maximum operating pressure: 232.06 psi  Max pressure at stated temp: 232 psi / 250 °F  232 psi / -4 °F  Type of connection: ANSI / JIS  Size of inlet connection: DN 50  Size of outlet connection: DN 50  Pressure rating for connection: PN 25  Flange rating inlet: 300 lb  Flange size for motor: 254TC</p> <p><b>Electrical data:</b></p>

Qty.	Description
	<p> <b>Motor standard:</b> NEMA  <b>Motor type:</b> BALDOR  <b>IE Efficiency class:</b> IE3 / NEMA Premium  <b>Rated power - P2:</b> 15 HP  <b>Power (P2) required by pump:</b> 15 HP  <b>Mains frequency:</b> 60 Hz  <b>Rated voltage:</b> 3 x 208-230/460 V  <b>Service factor:</b> 1.15  <b>Rated current:</b> 38,0-35,0/17,5 A  <b>Rated speed:</b> 3520 rpm  <b>Efficiency:</b> IE3 91%  <b>Motor efficiency at full load:</b> 91-91 %  <b>Number of poles:</b> 2  <b>Enclosure class (IEC 34-5):</b> IP54  <b>Insulation class (IEC 85):</b> F  <b>Motor No:</b> 85600H24 </p> <p> <b>Controls:</b>  <b>Frequency converter:</b> NONE </p> <p> <b>Others:</b>  <b>DOE Pump Energy Index CL:</b> 0.91  <b>Net weight:</b> 324 lb  <b>Gross weight:</b> 439 lb  <b>Shipping volume:</b> 17.2 ft³  <b>Country of origin:</b> US  <b>Custom tariff no.:</b> 8413.70.2040 </p>

## 96523618 CR 15-7 A-GJ-A-E-HQQE 60 Hz



Description	Value
<b>General information:</b>	
Product name:	CR 15-7 A-GJ-A-E-HQQE
Product No:	96523618
EAN number:	5700396908328 5700396908328
<b>Technical:</b>	
Pump speed on which pump data are based:	3444 rpm
Rated flow:	90.3 US GPM
Rated head:	359.9 ft
Maximum head:	462.6 ft
Actual impeller diameter:	4.13 in
Stages:	7
Impellers:	7
Number of reduced-diameter impellers:	0
Low NPSH:	N
Pump orientation:	Vertical
Shaft seal arrangement:	Single
Code for shaft seal:	HQQE
Approvals on nameplate:	CURUS
Curve tolerance:	ISO9906:2012 3B
Pump version:	A
Model:	A
Cooling:	TEFC
<b>Materials:</b>	
Base:	Cast iron EN 1561 EN-GJL-200 ASTM A48-25B
Impeller:	Stainless steel EN 1.4301 AISI 304
Material code:	A
Code for rubber:	E
Bearing:	SIC
<b>Installation:</b>	
Maximum ambient temperature:	104 °F
Maximum operating pressure:	232.06 psi
Max pressure at stated temp:	232 psi / 250 °F 232 psi / -4 °F
Type of connection:	ANSI / JIS
Size of inlet connection:	DN 50
Size of outlet connection:	DN 50
Pressure rating for connection:	PN 25
Flange rating inlet:	300 lb
Flange size for motor:	254TC
Connect code:	GJ
<b>Liquid:</b>	
Pumped liquid:	Water
Liquid temperature range:	-4 .. 248 °F
Selected liquid temperature:	68 °F
Density:	62.29 lb/ft³
<b>Electrical data:</b>	
Motor standard:	NEMA
Motor type:	BALDOR
IE Efficiency class:	IE3 / NEMA Premium
Rated power - P2:	15 HP
Power (P2) required by pump:	15 HP
Mains frequency:	60 Hz





Company name:

Created by:

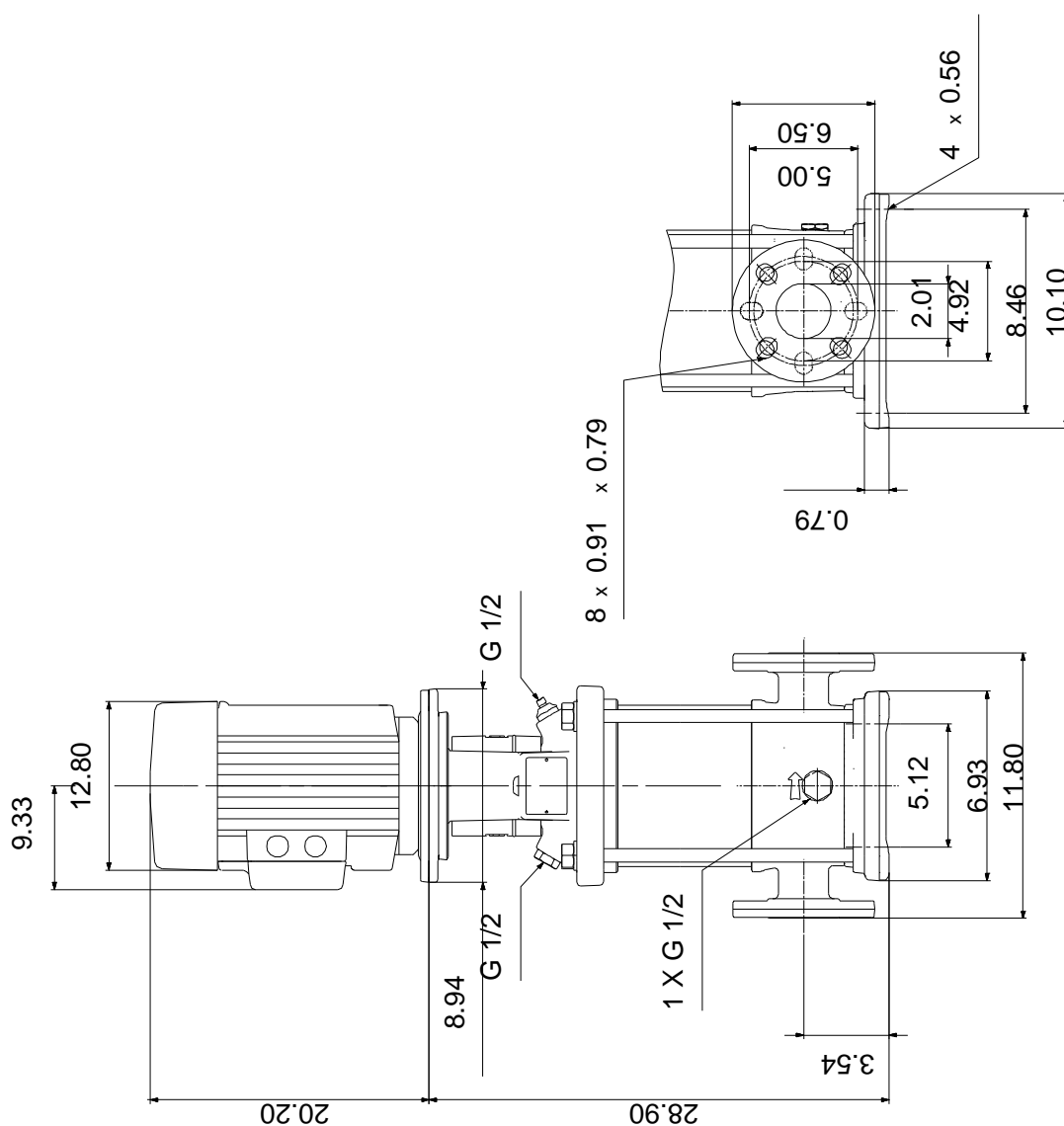
Phone:

Date:

27/04/2020

Description	Value
Rated voltage:	3 x 208-230/460 V
Service factor:	1.15
Rated current:	38,0-35,0/17,5 A
Load current:	44-40/20 A
Rated speed:	3520 rpm
Efficiency:	IE3 91%
Motor efficiency at full load:	91-91 %
Number of poles:	2
Enclosure class (IEC 34-5):	IP54
Insulation class (IEC 85):	F
Motor protec:	NONE
Motor No:	85600H24
<b>Controls:</b>	
Frequency converter:	NONE
<b>Others:</b>	
DOE Pump Energy Index CL:	0.91
Net weight:	324 lb
Gross weight:	439 lb
Shipping volume:	17.2 ft³
Country of origin:	US
Custom tariff no.:	8413.70.2040

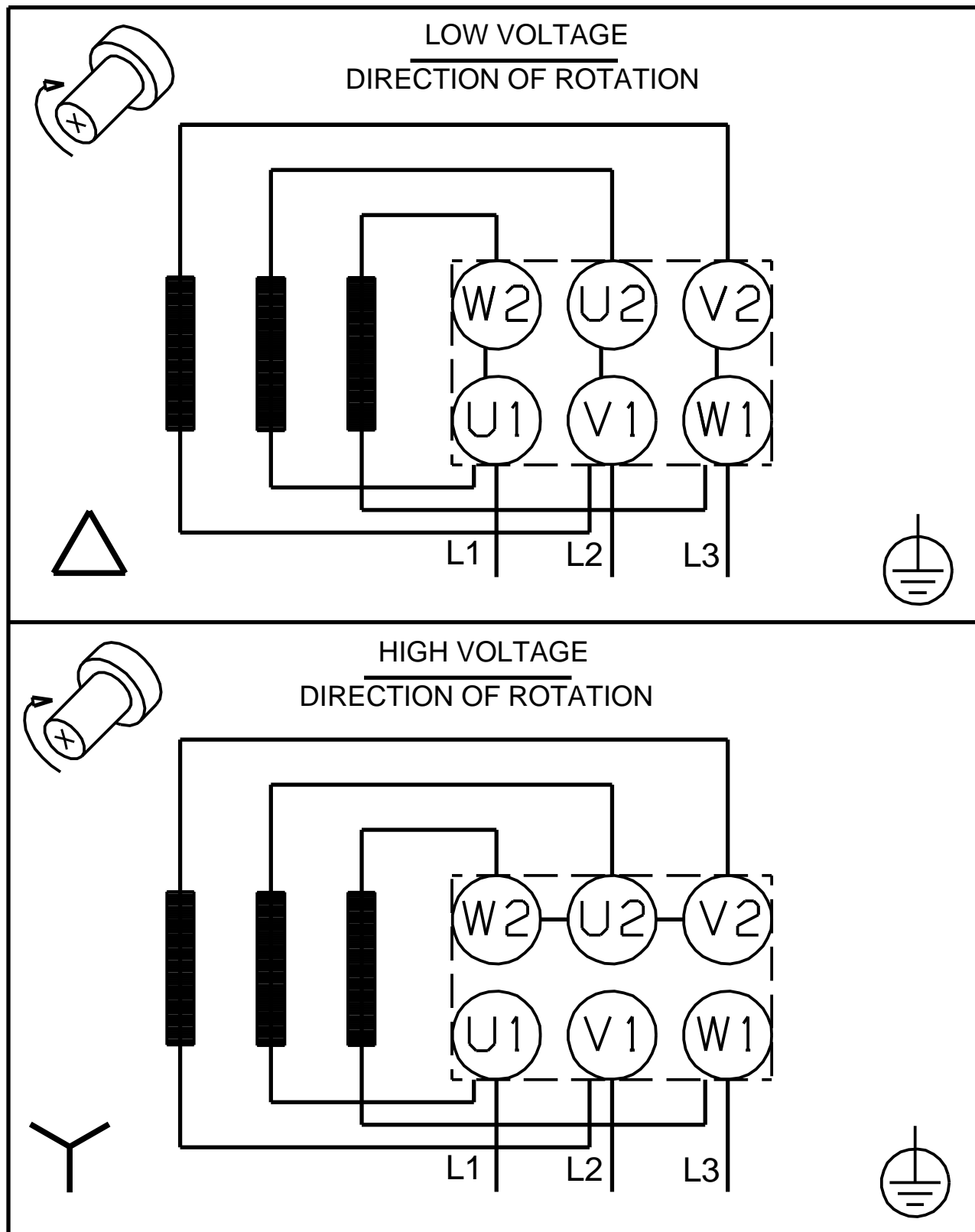
## 96523618 CR 15-7 A-GJ-A-E-HQQE 60 Hz



Note! All units are in [in] unless others are stated.  
Disclaimer: This simplified dimensional drawing does not show all details.



## 96523618 CR 15-7 A-GJ-A-E-HQQE 60 Hz



Note! All units are in [in] unless others are stated.