

PROJECT:	_____	UNIT TAG:	_____	QUANTITY:	_____
REPRESENTATIVE:	_____	TYPE OF SERVICE:	_____	DATE:	_____
ENGINEER:	_____	SUBMITTED BY:	_____	DATE:	_____
CONTRACTOR:	_____	APPROVED BY:	_____	DATE:	_____
	_____	ORDER NO.:	_____	DATE:	_____

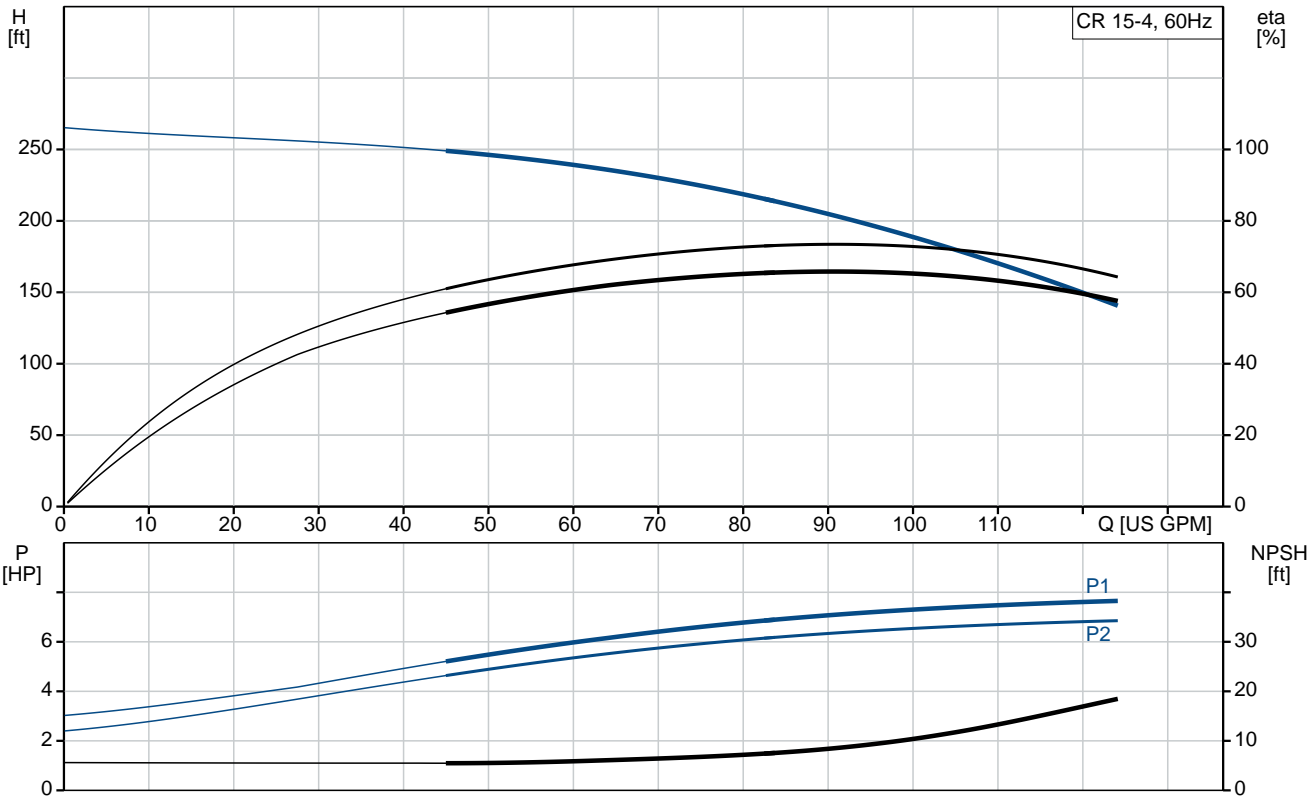


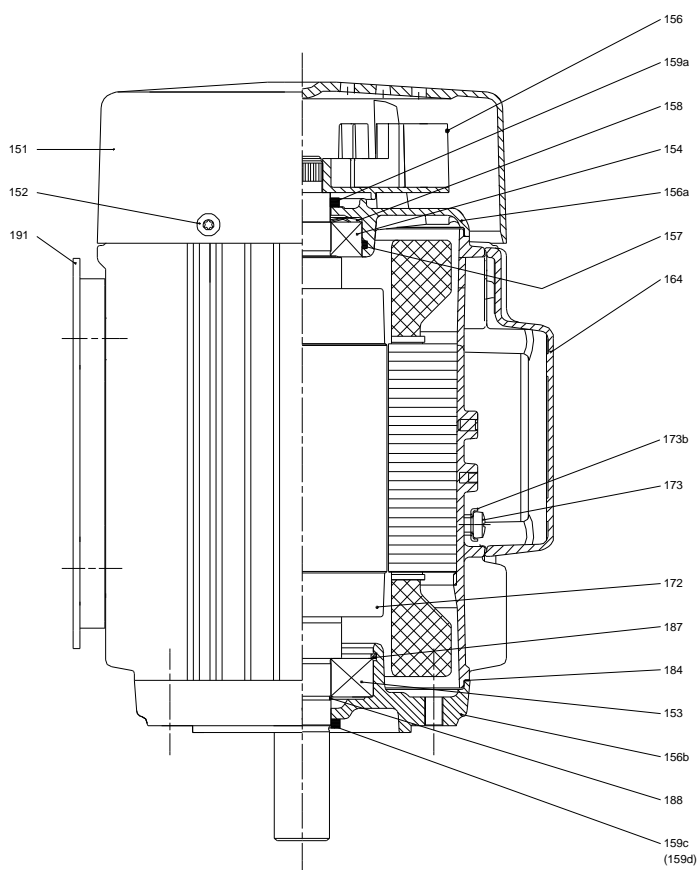
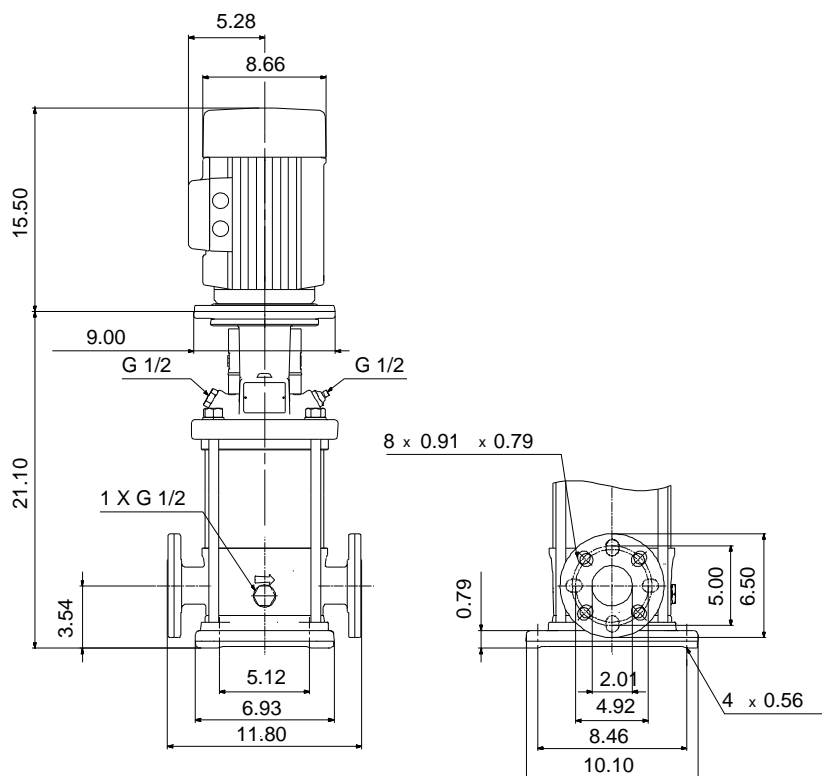
**CR 15-4 A-GJ-A-V-HQQV**

Vertical, multistage centrifugal pump with suction and discharge ports on the same level. The pump head and base are in cast iron - all other wetted parts are in stainless steel (EN 1.4301)

Note! Product picture may differ from actual product

Conditions of Service	Pump Data	Motor Data
Flow: _____	Max pressure at stated temp: 232 psi / 194 °F	Rated power - P2: 7.5 HP
Head: _____	Liquid temperature range: -4 .. 194 °F	Rated voltage: 208-230YY/460Y V
Efficiency: _____	Maximum ambient temperature: 140 °F	Mains frequency: 60 Hz
Liquid: Water	Approvals: CURUS	Enclosure class: 55 Dust/Jetting
Temperature: 68 °F	Shaft seal: HQQV	Insulation class: F
NPSH required: ft	Product number: 96523631	Motor protection: PTC
Viscosity: _____		Motor type: 132DA
Specific Gravity: 1.000		Motor_efficiency: 89.5 %





**Materials:**

Base:

Cast iron  
EN 1561 EN-GJL-200  
ASTM A48-25B

Impeller:


Stainless steel  
AISI 304  
EN 1.4301

Material code:

A

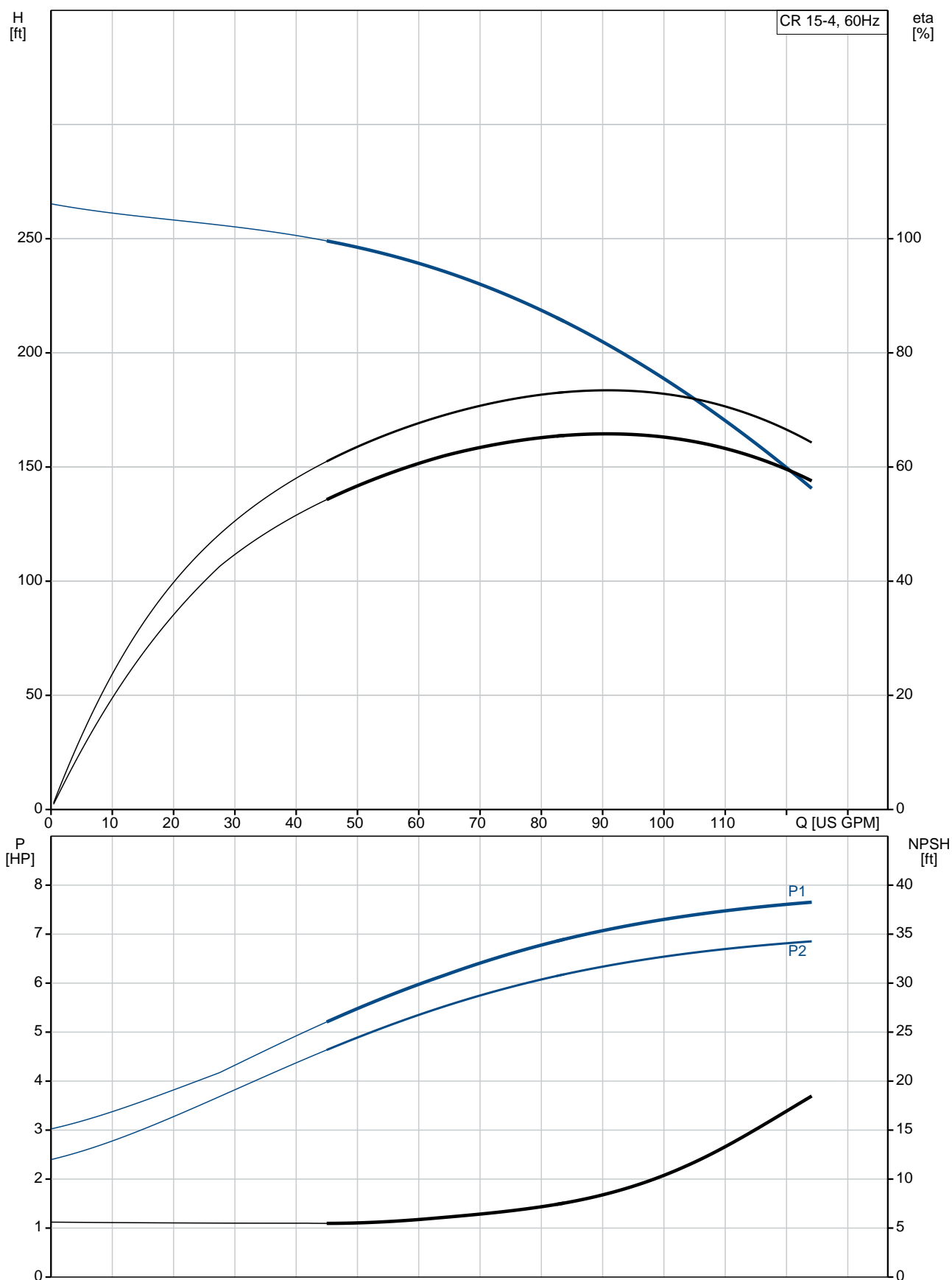
Code for rubber:

V

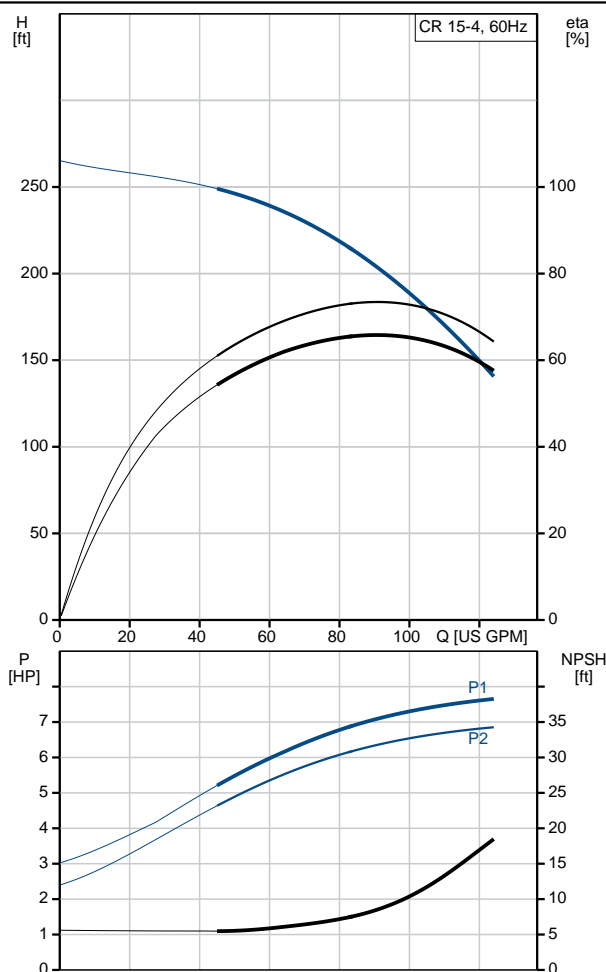
Qty.	Description
1	<p><b>CR 15-4 A-GJ-A-V-HQQV</b></p>  <p>Product No.: <a href="#">96523631</a></p> <p>Vertical, multistage centrifugal pump with inlet and outlet ports on same the level (inline). The pump head and base are in cast iron – all other wetted parts are in stainless steel. A cartridge shaft seal ensures high reliability, safe handling, and easy access and service. Power transmission is via a rigid split coupling. Pipe connection is via combined ANSI-JIS flanges.</p> <p>The pump is fitted with a 3-phase, fan-cooled asynchronous motor.</p> <p><b>Liquid:</b>  Pumped liquid: Water  Liquid temperature range: -4 .. 194 °F  Selected liquid temperature: 68 °F  Density: 62.29 lb/ft³</p> <p><b>Technical:</b>  Pump speed on which pump data are based: 3467 rpm  Rated flow: 90.3 US GPM  Rated head: 206 ft  Actual impeller diameter: 4.13 in  Pump orientation: Vertical  Shaft seal arrangement: Single  Code for shaft seal: HQQV  Approvals on nameplate: CURUS  Curve tolerance: ISO9906:2012 3B</p> <p><b>Materials:</b>  Base: Cast iron  EN 1561 EN-GJL-200  ASTM A48-25B  Impeller: Stainless steel  EN 1.4301  AISI 304  Bearing: SIC</p> <p><b>Installation:</b>  Maximum ambient temperature: 140 °F  Maximum operating pressure: 232.06 psi  Max pressure at stated temp: 232 psi / 194 °F  232 psi / -4 °F  Type of connection: ANSI / JIS  Size of inlet connection: DN 50  Size of outlet connection: DN 50  Pressure rating for connection: PN 25  Flange rating inlet: 300 lb  Flange size for motor: 213TC</p> <p><b>Electrical data:</b></p>

Qty.	Description
	<p> <b>Motor standard:</b> NEMA  <b>Motor type:</b> 132DA  <b>IE Efficiency class:</b> NEMA Premium / IE3 60Hz  <b>Rated power - P2:</b> 7.5 HP  <b>Power (P2) required by pump:</b> 7.5 HP  <b>Mains frequency:</b> 60 Hz  <b>Rated voltage:</b> 3 x 208-230YY/460Y V  <b>Service factor:</b> 1.15  <b>Rated current:</b> 19,5-18,1/9,09 A  <b>Starting current:</b> 1020-1480 %  <b>Cos phi - power factor:</b> 0.89-0.86  <b>Rated speed:</b> 3490-3520 rpm  <b>Efficiency:</b> IE3 89,5%  <b>Motor efficiency at full load:</b> 89.5 %  <b>Motor efficiency at 3/4 load:</b> 89.7 %  <b>Motor efficiency at 1/2 load:</b> 88.3 %  <b>Number of poles:</b> 2  <b>Enclosure class (IEC 34-5):</b> 55 Dust/Jetting  <b>Insulation class (IEC 85):</b> F  <b>Motor No:</b> 85904392 </p> <p> <b>Controls:</b>  <b>Frequency converter:</b> NONE </p> <p> <b>Others:</b>  <b>DOE Pump Energy Index CL:</b> 0.91  <b>Net weight:</b> 192 lb  <b>Gross weight:</b> 209 lb  <b>Shipping volume:</b> 8.26 ft³  <b>Country of origin:</b> US  <b>Custom tariff no.:</b> 8413.70.2040 </p>

## 96523631 CR 15-4 A-GJ-A-V-HQQV 60 Hz



Description	Value
<b>General information:</b>	
Product name:	CR 15-4 A-GJ-A-V-HQQV
Product No:	96523631
EAN number:	5700396908564 5700396908564
<b>Technical:</b>	
Pump speed on which pump data are based:	3467 rpm
Rated flow:	90.3 US GPM
Rated head:	206 ft
Maximum head:	266.4 ft
Actual impeller diameter:	4.13 in
Stages:	4
Impellers:	4
Number of reduced-diameter impellers:	0
Low NPSH:	N
Pump orientation:	Vertical
Shaft seal arrangement:	Single
Code for shaft seal:	HQQV
Approvals on nameplate:	CURUS
Curve tolerance:	ISO9906:2012 3B
Pump version:	A
Model:	A
Cooling:	TEFC
<b>Materials:</b>	
Base:	Cast iron EN 1561 EN-GJL-200 ASTM A48-25B
Impeller:	Stainless steel EN 1.4301 AISI 304
Material code:	A
Code for rubber:	V
Bearing:	SIC
<b>Installation:</b>	
Maximum ambient temperature:	140 °F
Maximum operating pressure:	232.06 psi
Max pressure at stated temp:	232 psi / 194 °F 232 psi / -4 °F
Type of connection:	ANSI / JIS
Size of inlet connection:	DN 50
Size of outlet connection:	DN 50
Pressure rating for connection:	PN 25
Flange rating inlet:	300 lb
Flange size for motor:	213TC
Connect code:	GJ
<b>Liquid:</b>	
Pumped liquid:	Water
Liquid temperature range:	-4 .. 194 °F
Selected liquid temperature:	68 °F
Density:	62.29 lb/ft³
<b>Electrical data:</b>	
Motor standard:	NEMA
Motor type:	132DA
IE Efficiency class:	NEMA Premium / IE3 60Hz
Rated power - P2:	7.5 HP
Power (P2) required by pump:	7.5 HP





Company name:

Created by:

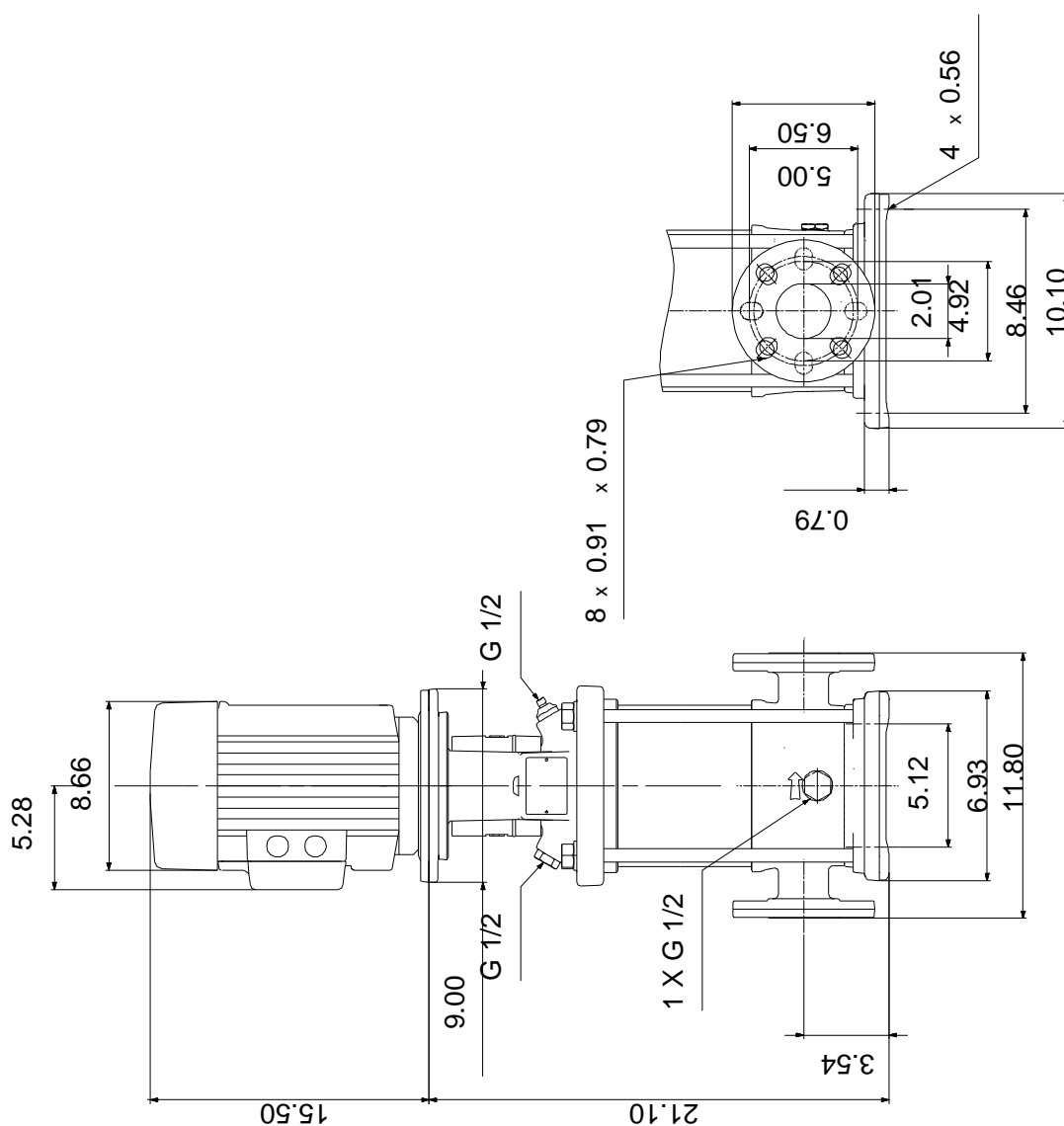
Phone:

Date:

24/04/2020

Description	Value
Mains frequency:	60 Hz
Rated voltage:	3 x 208-230YY/460Y V
Service factor:	1.15
Rated current:	19,5-18,1/9,09 A
Starting current:	1020-1480 %
Load current:	22,4-20,8/10,4 A
Cos phi - power factor:	0.89-0.86
Rated speed:	3490-3520 rpm
Efficiency:	IE3 89,5%
Motor efficiency at full load:	89.5 %
Motor efficiency at 3/4 load:	89.7 %
Motor efficiency at 1/2 load:	88.3 %
Number of poles:	2
Enclosure class (IEC 34-5):	55 Dust/Jetting
Insulation class (IEC 85):	F
Motor protec:	PTC
Motor No:	85904392
<b>Controls:</b>	
Frequency converter:	NONE
<b>Others:</b>	
DOE Pump Energy Index CL:	0.91
Net weight:	192 lb
Gross weight:	209 lb
Shipping volume:	8.26 ft <sup>3</sup>
Country of origin:	US
Custom tariff no.:	8413.70.2040

## 96523631 CR 15-4 A-GJ-A-V-HQQV 60 Hz



Note! All units are in [in] unless others are stated.

Disclaimer: This simplified dimensional drawing does not show all details.



## 96523631 CR 15-4 A-GJ-A-V-HQQV 60 Hz

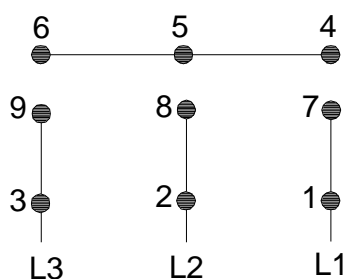


### WARNING

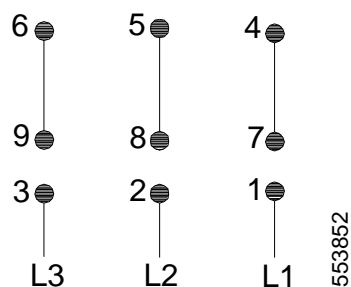
MOTOR MUST BE GROUNDED IN ACCORDANCE WITH THE NATIONAL ELECTRICAL CODE AND LOCAL CODES BY TRAINED PERSONNEL TO PREVENT SERIOUS ELECTRICAL SHOCKS.

TO SERVICE MOTOR, DISCONNECT POWER SOURCE FROM MOTOR AND ANY ACCESSORY DEVICES AND ALLOW MOTOR TO COME TO A COMPLETE STAND STILL.

#### LOW VOLTAGE 60Hz. 208-230V

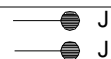


#### HIGH VOLTAGE 60Hz: 460V 50Hz: 400V



INTERCHANGE ANY TWO LINE  
WIRES TO REVERSE ROTATION

THERMOSTAT LEADS  
(WHEN PROVIDED)



Note! All units are in [in] unless others are stated.