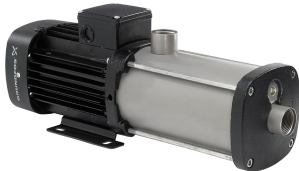


PROJECT: _____	UNIT TAG: _____	QUANTITY: _____
REPRESENTATIVE: _____	TYPE OF SERVICE: _____	DATE: _____
ENGINEER: _____	SUBMITTED BY: _____	DATE: _____
CONTRACTOR: _____	APPROVED BY: _____	DATE: _____
	ORDER NO.: _____	DATE: _____

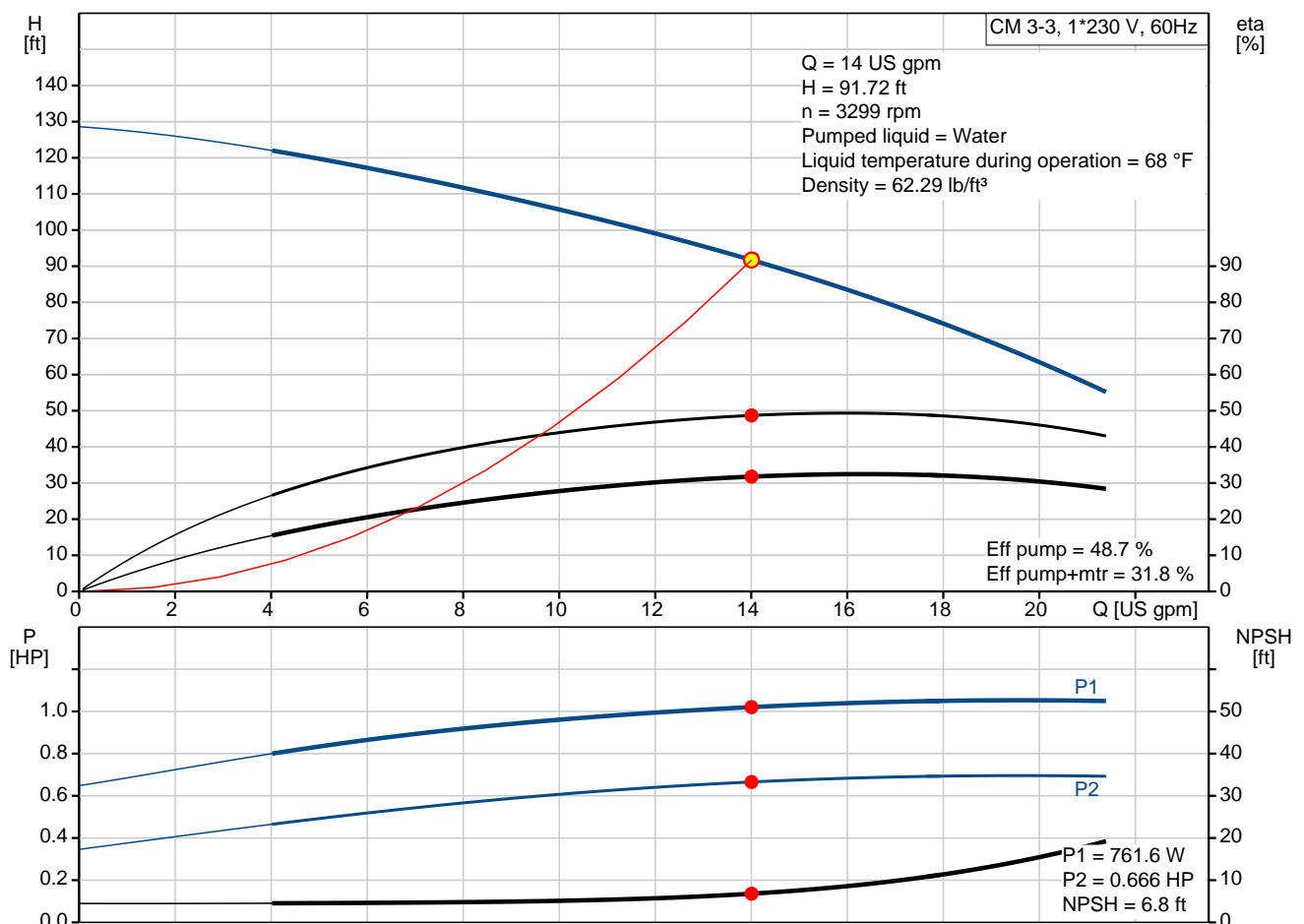
### CM 3-3 A-S-G-V-AQQV B-A-A-N

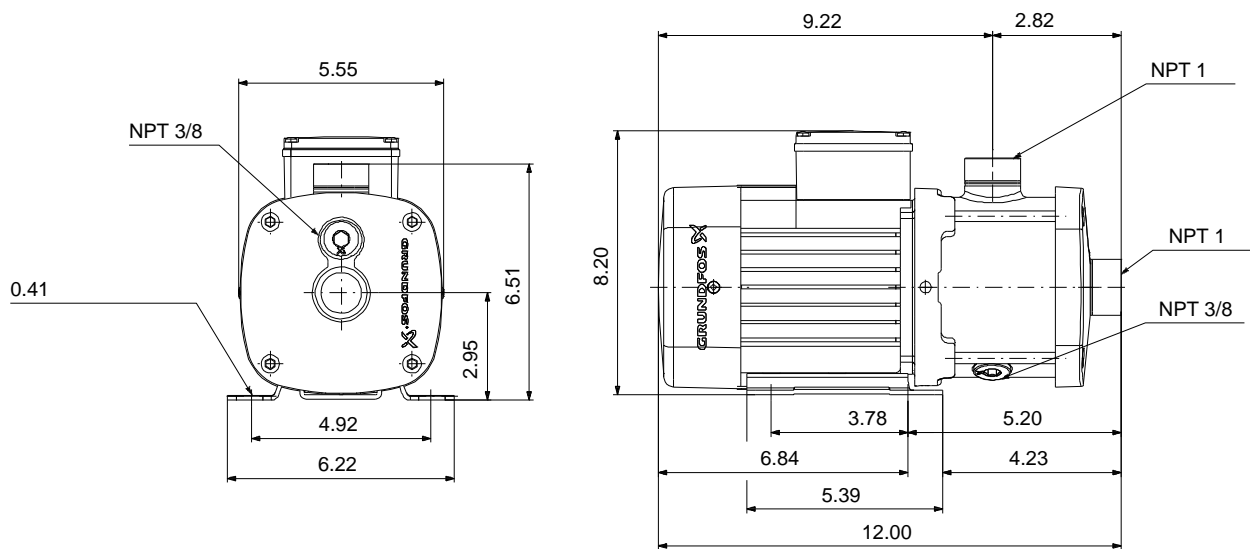


CM are reliable, quiet and compact horizontal end-suction pumps. The modular pump design makes it easy to make customised solutions. The CM pumps are available in cast iron and stainless steel

Product photo could vary from the actual product

Conditions of Service		Pump Data		Motor Data	
Flow:	14 US gpm	Max pressure at stated temperature:	232 psi / 194 °F	Main frequency:	60 Hz
Head:	91.72 ft	Liquid temperature range:	-4 .. 248 °F	Enclosure class:	IP55
Efficiency:	31.8 %	Maximum ambient temperature:	131 °F		
Liquid:	Water	Shaft seal:	AQQV		
Temperature:	68 °F	Product number:	On request		
NPSH required:	6.8 ft				
Viscosity:	_____				
Specific Gravity:	1.000				





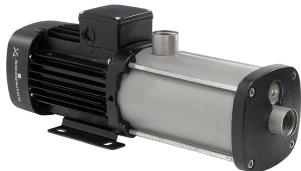
**Materials:**

Pump housing: Stainless steel  
AISI 316

Impeller: Stainless steel  
AISI 316  
EN 1.4401

Material code: G

Code for rubber: V

Count	Description
1	<p><b>CM 3-3 A-S-G-V-AQQV B-A-A-N</b></p>  <p>Product photo could vary from the actual product</p> <p>Product No.: On request</p> <p>Compact, reliable, horizontal, multistage, end-suction centrifugal pump with axial suction port and radial discharge port. Pump materials in contact with the liquid are in high-grade stainless steel. The mechanical shaft seal is a special designed, unbalanced O-ring seal. Pipework connection is via internal NPT pipe threads. The pump is fitted with a 1-phase, foot-mounted, fan-cooled asynchronous motor.</p> <p><b>Controls:</b> Frequency converter: NONE</p> <p><b>Liquid:</b> Pumped liquid: Water Liquid temperature range: -4 .. 248 °F Selected liquid temperature: 68 °F Density: 62.29 lb/ft³</p> <p><b>Technical:</b> Pump speed on which pump data are based: 3480 rpm Actual calculated flow: 14 US gpm Rated flow: 16.4 US gpm Resulting head of the pump: 91.72 ft Rated head: 96.03 ft Code for shaft seal: AQQV Curve tolerance: ISO9906:2012 3B</p> <p><b>Materials:</b> Pump housing: Stainless steel EN 1.4401 AISI 316 Impeller: Stainless steel EN 1.4401 AISI 316</p> <p><b>Installation:</b> Range of ambient temperature: -4 .. 131 °F Maximum operating pressure: 232.06 psi Max pressure at stated temperature: 232 psi / 194 °F 145 psi / 250 °F Type of connection: NPT(F) Size of suction port: 1 inch Size of outlet port: 1 inch Outlet position: 12</p> <p><b>Electrical data:</b> Motor standard: NEMA Frame size: 71B Rated power - P2: 0.805 HP Main frequency: 60 Hz</p>



Company name:

Created by:

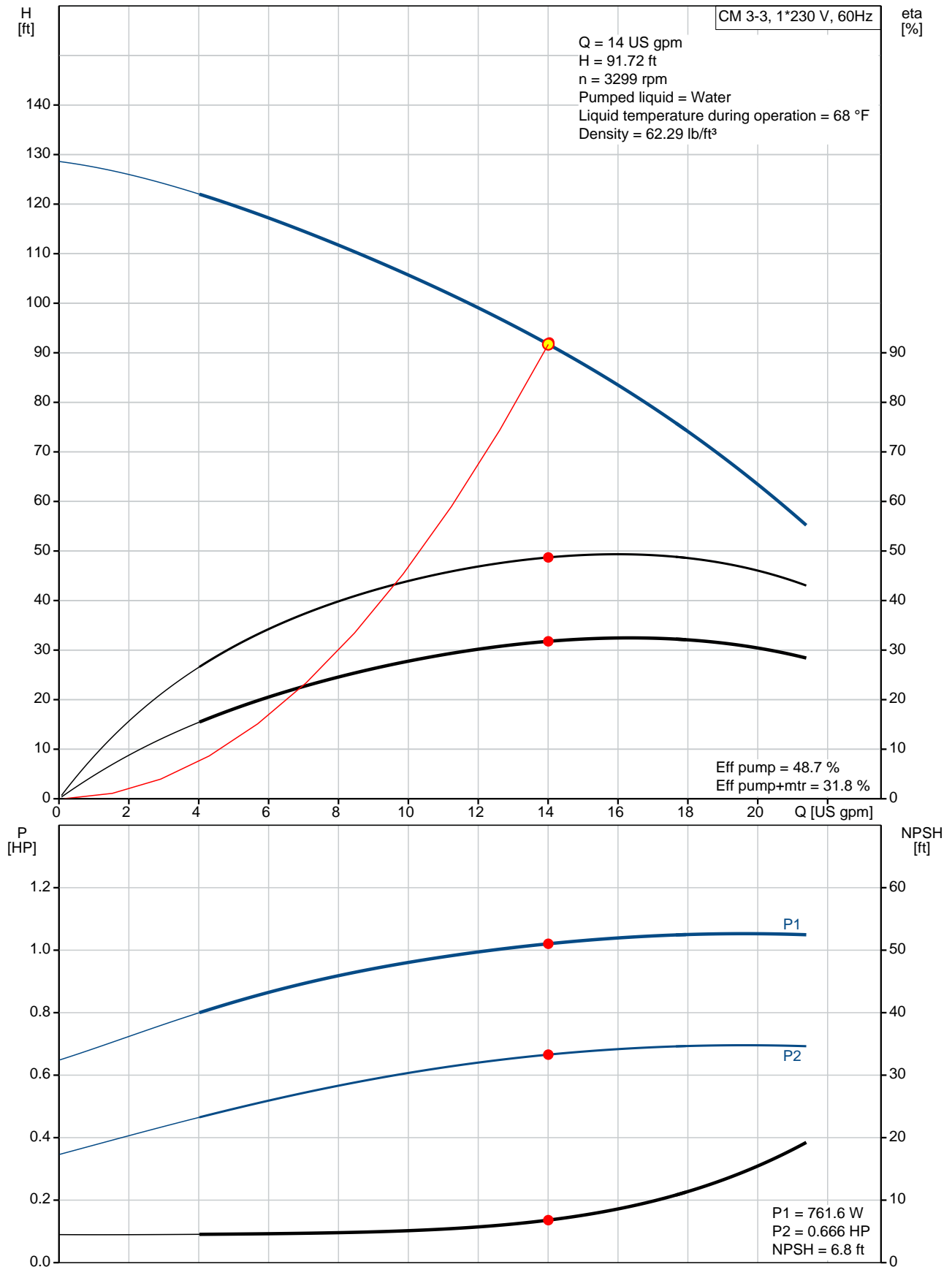
Phone:

Date:

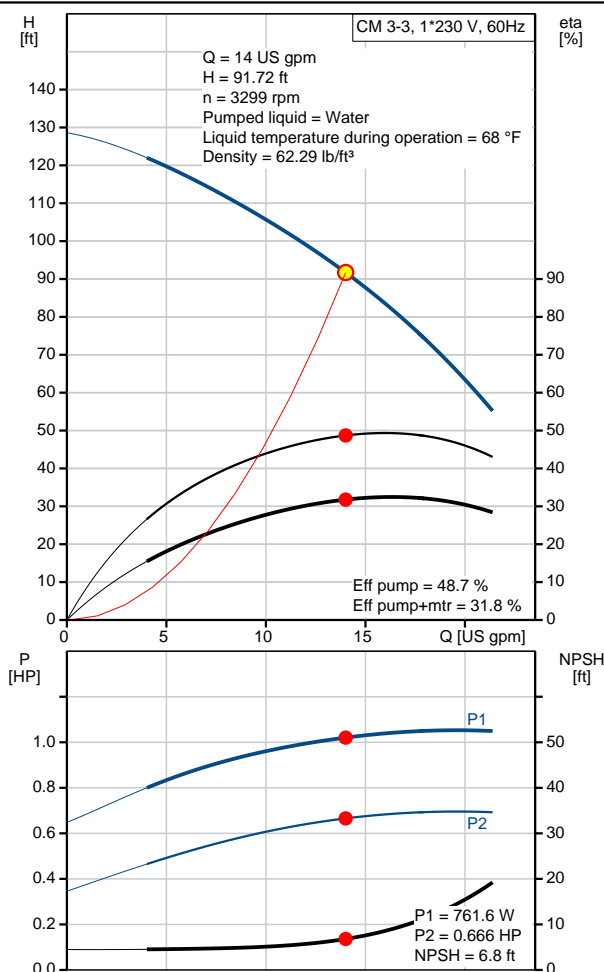
4/3/2020

Count	Description
	Suitable for 50/60 Hz: N Phase: 1 Rated voltage: 115/230 V Service factor: 1.00 Rated current: 7.6/3.9 A Starting current: 260-260 % Rated speed: 3240 rpm Enclosure class (IEC 34-5): IP55 Insulation class (IEC 85): F Built-in motor protection: NONE  <b>Others:</b> Terminal box position: 12 Minimum efficiency index, MEI $\eta_{\%}$ : 0.7 Net weight: 27.4 lb Gross weight: 32.9 lb Approvals: CE,CULUS,WRAS,ACS,TR,EAC,CURUS Country of origin: US Custom tariff no.: 8413.70.2040

## On request CM 3-3 A-S-G-V-AQQV B-A-A-N 60 Hz



Description	Value
<b>General information:</b>	
Product name:	CM 3-3 A-S-G-V-AQQV B-A-A-N
Product No.:	On request
EAN:	On request
	On request
<b>Technical:</b>	
Pump speed on which pump data are based:	3480 rpm
Actual calculated flow:	14 US gpm
Rated flow:	16.4 US gpm
Resulting head of the pump:	91.72 ft
Rated head:	96.03 ft
Impellers:	3
Code for shaft seal:	AQQV
Curve tolerance:	ISO9906:2012 3B
Pump version:	A
Model:	A
<b>Materials:</b>	
Pump housing:	Stainless steel
	EN 1.4401
	AISI 316
Impeller:	Stainless steel
	EN 1.4401
	AISI 316
Material code:	G
Code for rubber:	V
<b>Installation:</b>	
Range of ambient temperature:	-4 .. 131 °F
Maximum operating pressure:	232.06 psi
Max pressure at stated temperature:	232 psi / 194 °F
	145 psi / 250 °F
Type of connection:	NPT(F)
Size of suction port:	1 inch
Size of outlet port:	1 inch
Outlet position:	12
Connect code:	S
<b>Liquid:</b>	
Pumped liquid:	Water
Liquid temperature range:	-4 .. 248 °F
Selected liquid temperature:	68 °F
Density:	62.29 lb/ft³
<b>Electrical data:</b>	
Motor standard:	NEMA
Frame size:	71B
Rated power - P2:	0.805 HP
Main frequency:	60 Hz
Suitable for 50/60 Hz:	N
Phase:	1
Rated voltage:	115/230 V
Service factor:	1.00
Rated current:	7.6/3.9 A
Starting current:	260-260 %
Rated speed:	3240 rpm
Enclosure class (IEC 34-5):	IP55
Insulation class (IEC 85):	F
Built-in motor protection:	NONE
<b>Controls:</b>	





Company name:

Created by:

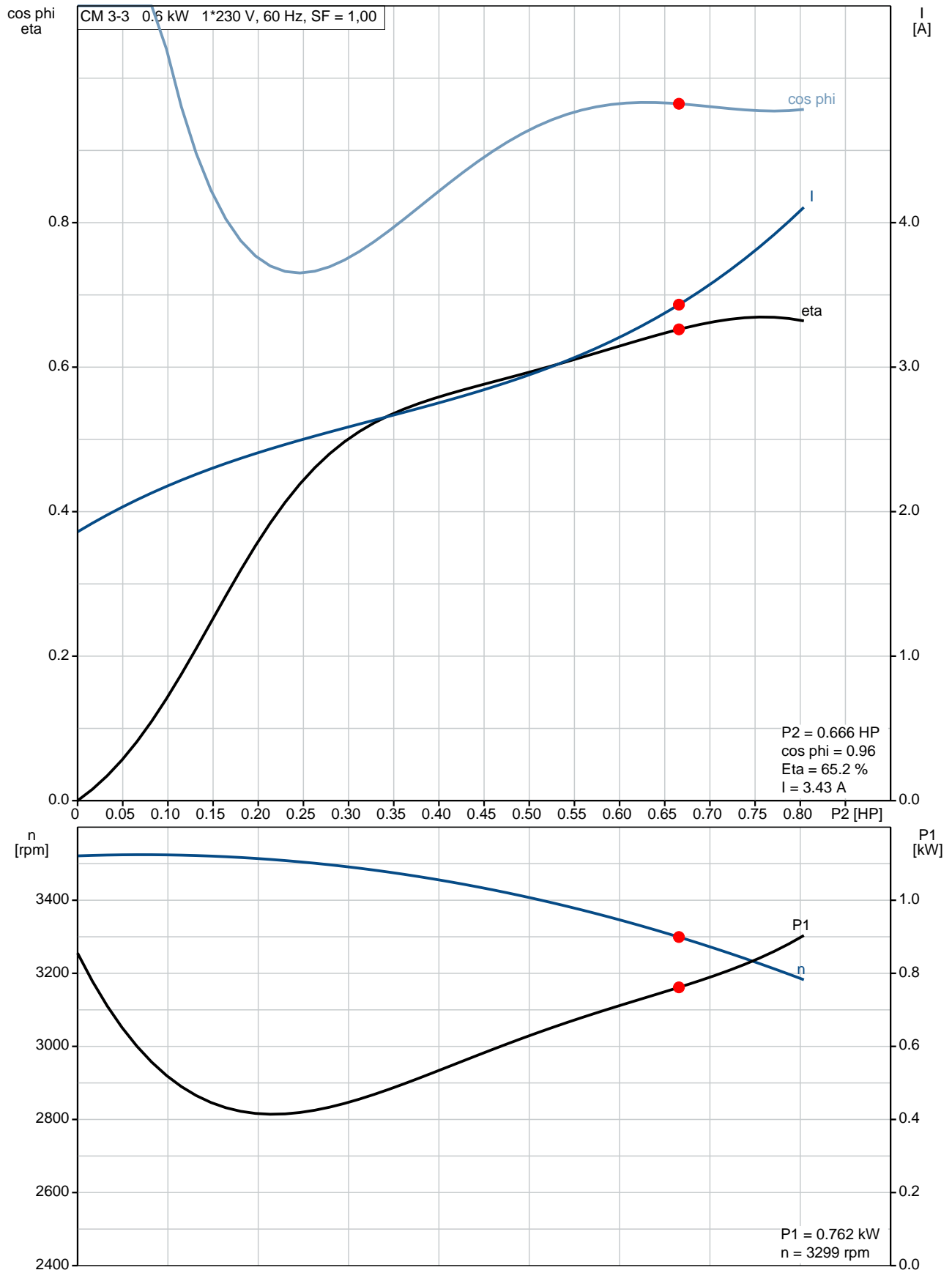
Phone:

Date:

4/3/2020

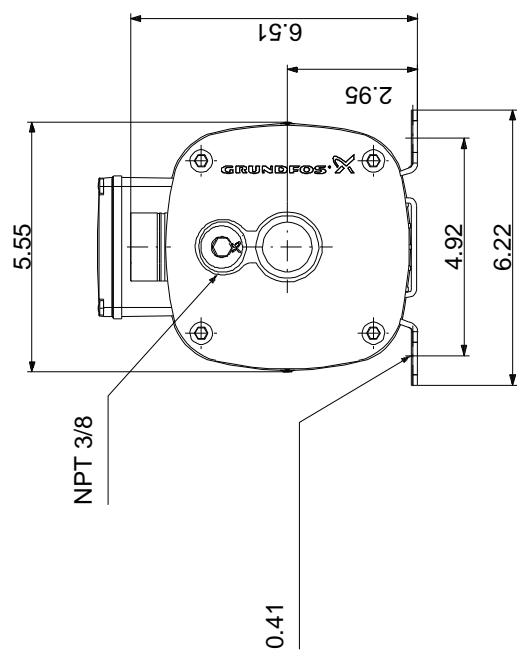
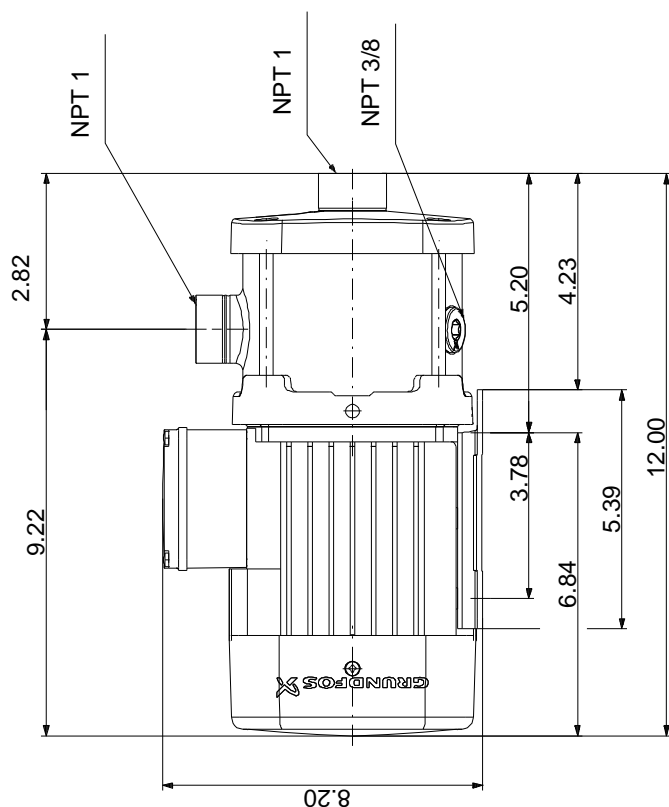
Description	Value
Frequency converter:	NONE
<b>Others:</b>	
Terminal box position:	12
Minimum efficiency index, MEI â%â€:â	0.7
Net weight:	27.4 lb
Gross weight:	32.9 lb
Approvals:	CE,CULUS,WRAS,ACS,TR,EA C,CURUS
Country of origin:	US
Custom tariff no.:	8413.70.2040

## On request CM 3-3 A-S-G-V-AQQV B-A-A-N 60 Hz





## On request CM 3-3 A-S-G-V-AQQV B-A-A-N 60 Hz



Note! All units are in [in] unless otherwise stated.

Disclaimer: This simplified dimensional drawing does not show all details.

On request CM 3-3 A-S-G-V-AQQV B-A-A-N 60 Hz

# SUITABLE FOR FIELD CONNECTION

