

| | | |
|-----------------------|------------------------|-----------------|
| PROJECT: _____ | UNIT TAG: _____ | QUANTITY: _____ |
| REPRESENTATIVE: _____ | TYPE OF SERVICE: _____ | DATE: _____ |
| ENGINEER: _____ | SUBMITTED BY: _____ | DATE: _____ |
| CONTRACTOR: _____ | APPROVED BY: _____ | DATE: _____ |
| | ORDER NO.: _____ | DATE: _____ |

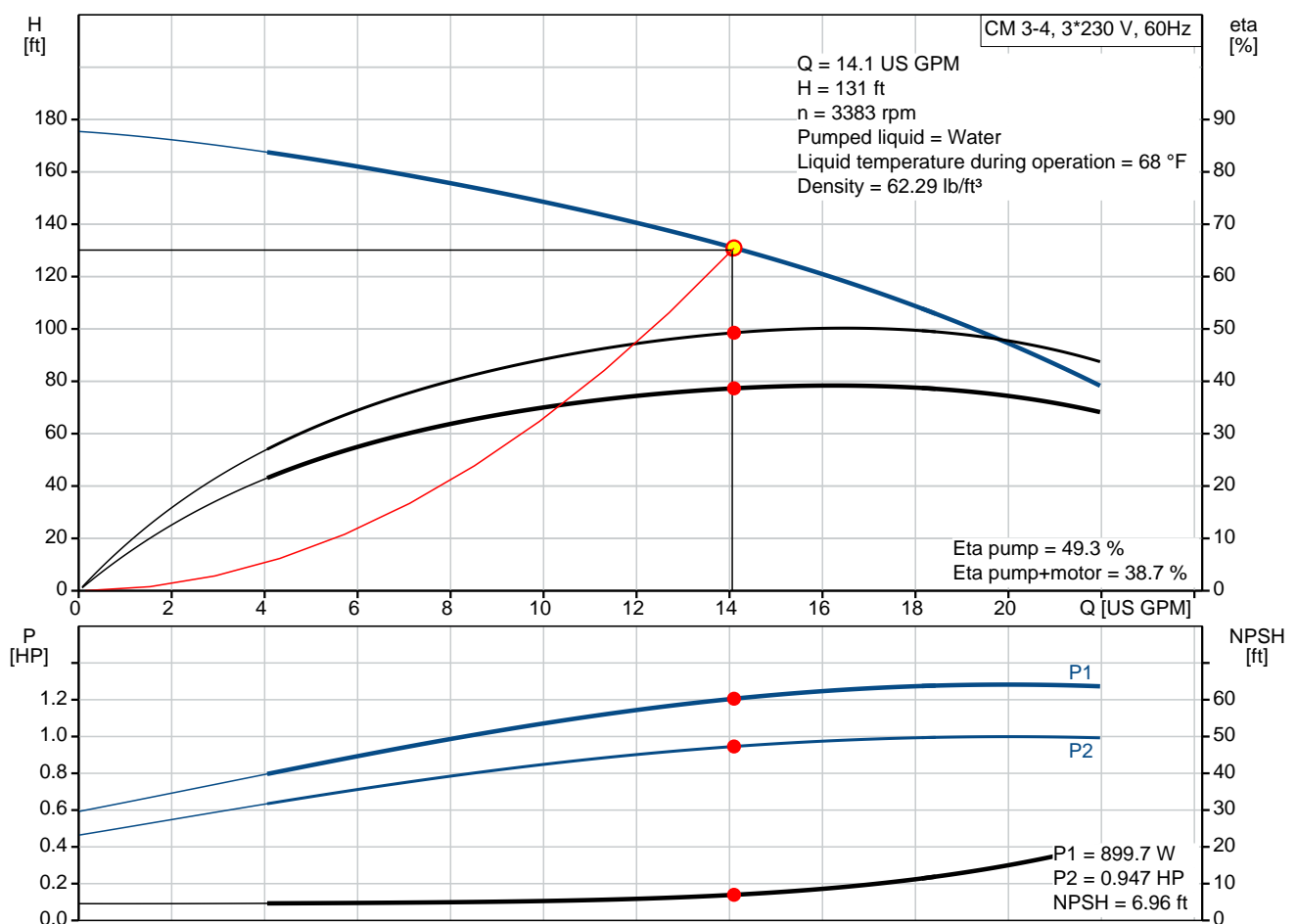
CM 3-4 A-S-G-E-AQQE E-A-A-N

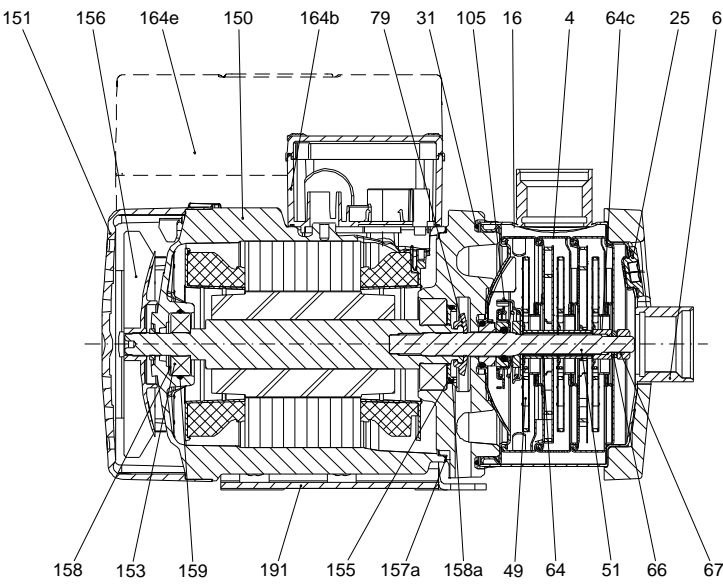
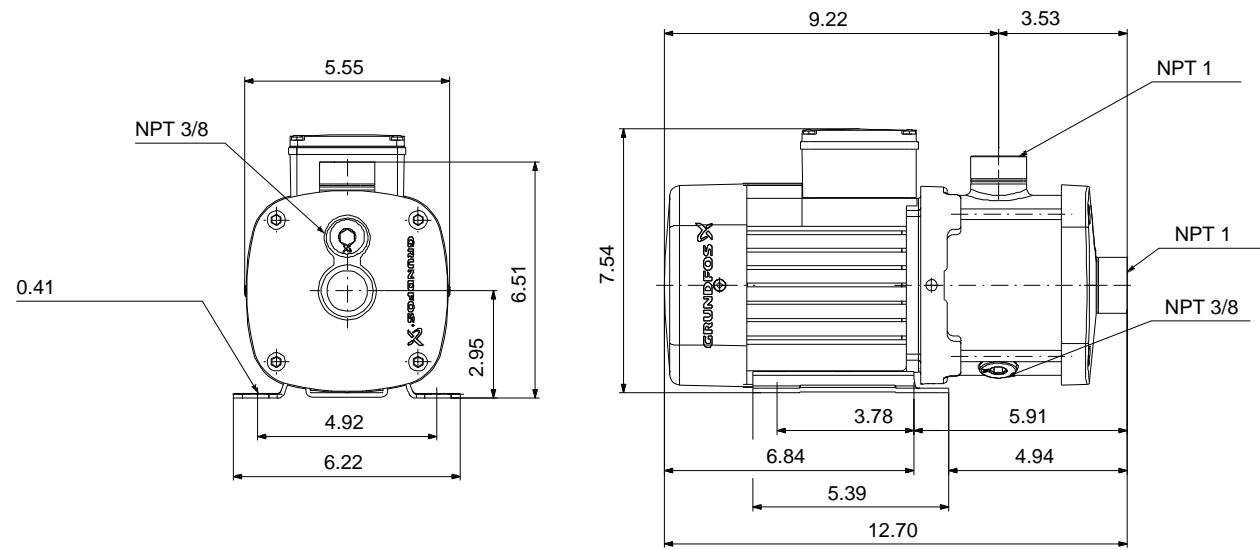


CM are reliable, quiet and compact horizontal end-suction pumps. The modular pump design makes it easy to make customised solutions. The CM pumps are available in cast iron and stainless steel

Note! Product picture may differ from actual product

| Conditions of Service | Pump Data | Motor Data |
|-------------------------|---|------------------------|
| Flow: 14.1 US GPM | Max pressure at stated temp: 232 psi / 194 °F | Mains frequency: 60 Hz |
| Head: 131 ft | Liquid temperature range: -4 .. 248 °F | Enclosure class: IP55 |
| Efficiency: 38.7 % | Maximum ambient temperature: 131 °F | |
| Liquid: Water | Shaft seal: AQQE | |
| Temperature: 68 °F | Product number: 96806895 | |
| NPSH required: 6.96 ft | | |
| Viscosity: _____ | | |
| Specific Gravity: 1.000 | | |



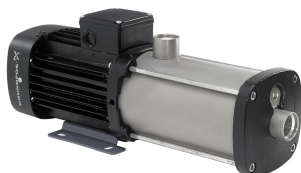


Materials:
Pump housing: Stainless steel
AISI 316
Impeller: Stainless steel
AISI 316
EN 1.4401
Material code: G
Code for rubber: E

165x100

Qty. Description

1 CM 3-4 A-S-G-E-AQQE E-A-A-N



Note! Product picture may differ from actual product

Product No.: [96806895](#)

Compact, reliable, horizontal, multistage, end-suction centrifugal pump with axial suction port and radial discharge port. Pump materials in contact with the liquid are in high-grade stainless steel. The mechanical shaft seal is a special designed, unbalanced O-ring seal. Pipework connection is via internal NPT pipe threads.

The pump is fitted with a 3-phase, foot-mounted, fan-cooled asynchronous motor.

Controls:

Frequency converter: NONE

Liquid:

Pumped liquid: Water
Liquid temperature range: -4 .. 248 °F
Selected liquid temperature: 68 °F
Density: 62.29 lb/ft³

Technical:

Pump speed on which pump data are based: 3480 rpm
Actual calculated flow: 14.1 US GPM
Rated flow: 16.4 US GPM
Resulting head of the pump: 131 ft
Rated head: 129.4 ft
Code for shaft seal: AQQE
Curve tolerance: ISO9906:2012 3B

Materials:

Pump housing: Stainless steel
EN 1.4401
AISI 316
Impeller: Stainless steel
EN 1.4401
AISI 316

Installation:

Range of ambient temperature: -4 .. 131 °F
Maximum operating pressure: 232.06 psi
Max pressure at stated temp: 232 psi / 194 °F
145 psi / 250 °F
Type of connection: NPT(F)
Size of inlet connection: 1 inch
Size of outlet connection: 1 inch
Outlet position: 12

Electrical data:

Motor standard: NEMA
Frame size: 71B



Company name:

Created by:

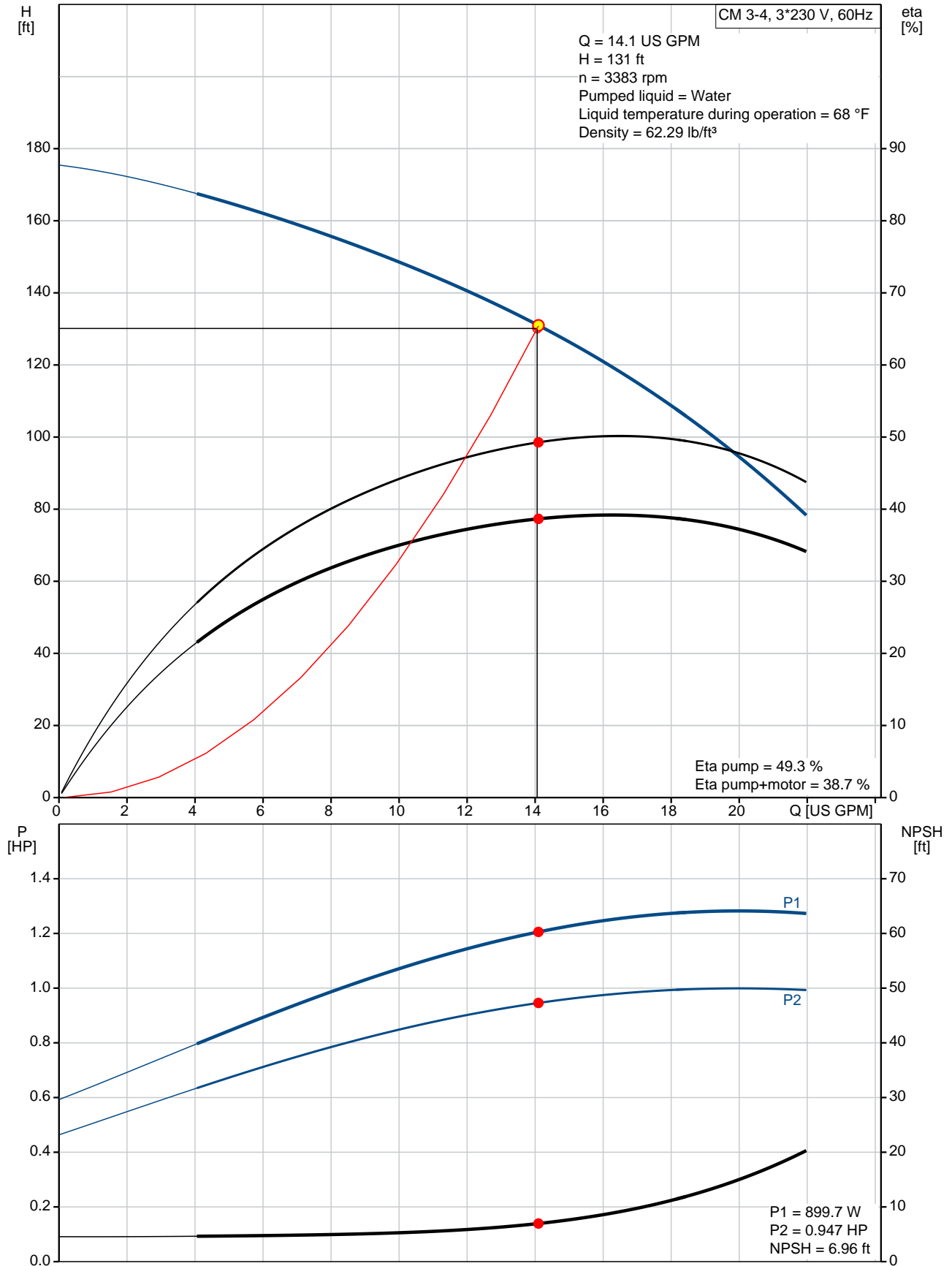
Phone:

Date:

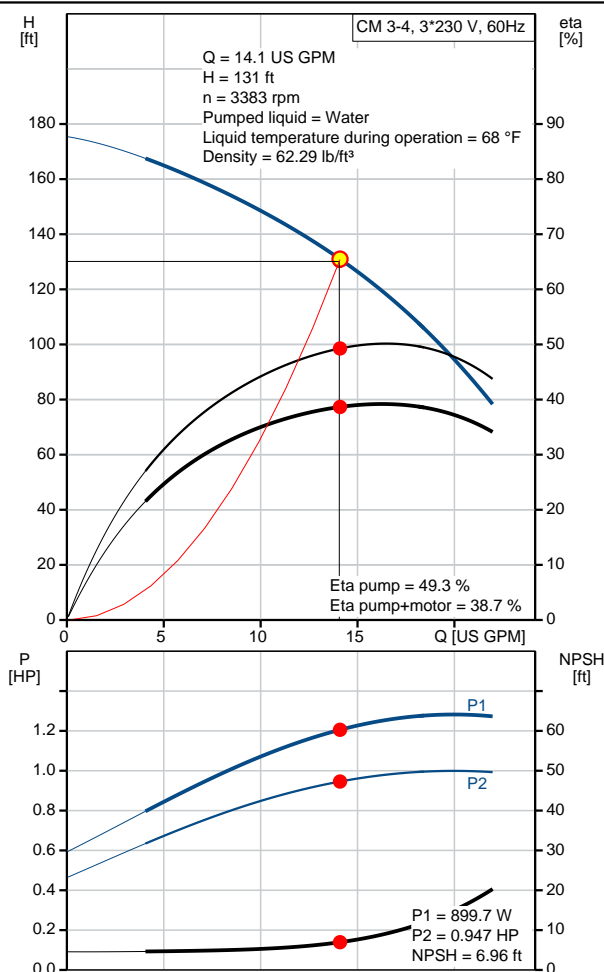
03/04/2020

| Qty. | Description |
|------|--|
| | <p>Rated power - P2: 0.992 HP Mains frequency: 60 Hz Suitable for 50/60 Hz: N Phases: 3 Rated voltage: 208-230YY/440-480Y V Service factor: 1.00 Rated current: 3,4-3,6/1,7-1,8 A Rated speed: 3220-3370 rpm Enclosure class (IEC 34-5): IP55 Insulation class (IEC 85): F Built-in motor protection: NONE</p> <p>Others: Terminal box position: 12 Minimum efficiency index, MEI $\eta_{\%}$: 0.7 Net weight: 28.1 lb Gross weight: 33.6 lb Approvals: CE,CULUS,WRAS,ACS,TR,EAC,CURUS Country of origin: US Custom tariff no.: 8413.70.2040</p> |

96806895 CM 3-4 A-S-G-E-AQQE E-A-A-N 60 Hz



| Description | Value |
|--|--|
| General information: | |
| Product name: | CM 3-4 A-S-G-E-AQQE E-A-A-N |
| Product No: | 96806895 |
| EAN number: | 5700310918426 5700310918426 |
| Technical: | |
| Pump speed on which pump data are based: | 3480 rpm |
| Actual calculated flow: | 14.1 US GPM |
| Rated flow: | 16.4 US GPM |
| Resulting head of the pump: | 131 ft |
| Rated head: | 129.4 ft |
| Impellers: | 4 |
| Code for shaft seal: | AQQE |
| Curve tolerance: | ISO9906:2012 3B |
| Pump version: | A |
| Model: | A |
| Materials: | |
| Pump housing: | Stainless steel EN 1.4401 AISI 316 |
| Impeller: | Stainless steel EN 1.4401 AISI 316 |
| Material code: | G |
| Code for rubber: | E |
| Installation: | |
| Range of ambient temperature: | -4 .. 131 °F |
| Maximum operating pressure: | 232.06 psi |
| Max pressure at stated temp: | 232 psi / 194 °F 145 psi / 250 °F |
| Type of connection: | NPT(F) |
| Size of inlet connection: | 1 inch |
| Size of outlet connection: | 1 inch |
| Outlet position: | 12 |
| Connect code: | S |
| Liquid: | |
| Pumped liquid: | Water |
| Liquid temperature range: | -4 .. 248 °F |
| Selected liquid temperature: | 68 °F |
| Density: | 62.29 lb/ft³ |
| Electrical data: | |
| Motor standard: | NEMA |
| Frame size: | 71B |
| Rated power - P2: | 0.992 HP |
| Mains frequency: | 60 Hz |
| Suitable for 50/60 Hz: | N |
| Phases: | 3 |
| Rated voltage: | 208-230YY/440-480Y V |
| Service factor: | 1.00 |
| Rated current: | 3,4-3,6/1,7-1,8 A |
| Rated speed: | 3220-3370 rpm |
| Enclosure class (IEC 34-5): | IP55 |
| Insulation class (IEC 85): | F |
| Built-in motor protection: | NONE |
| Controls: | |
| Frequency converter: | NONE |
| Others: | |





Company name:

Created by:

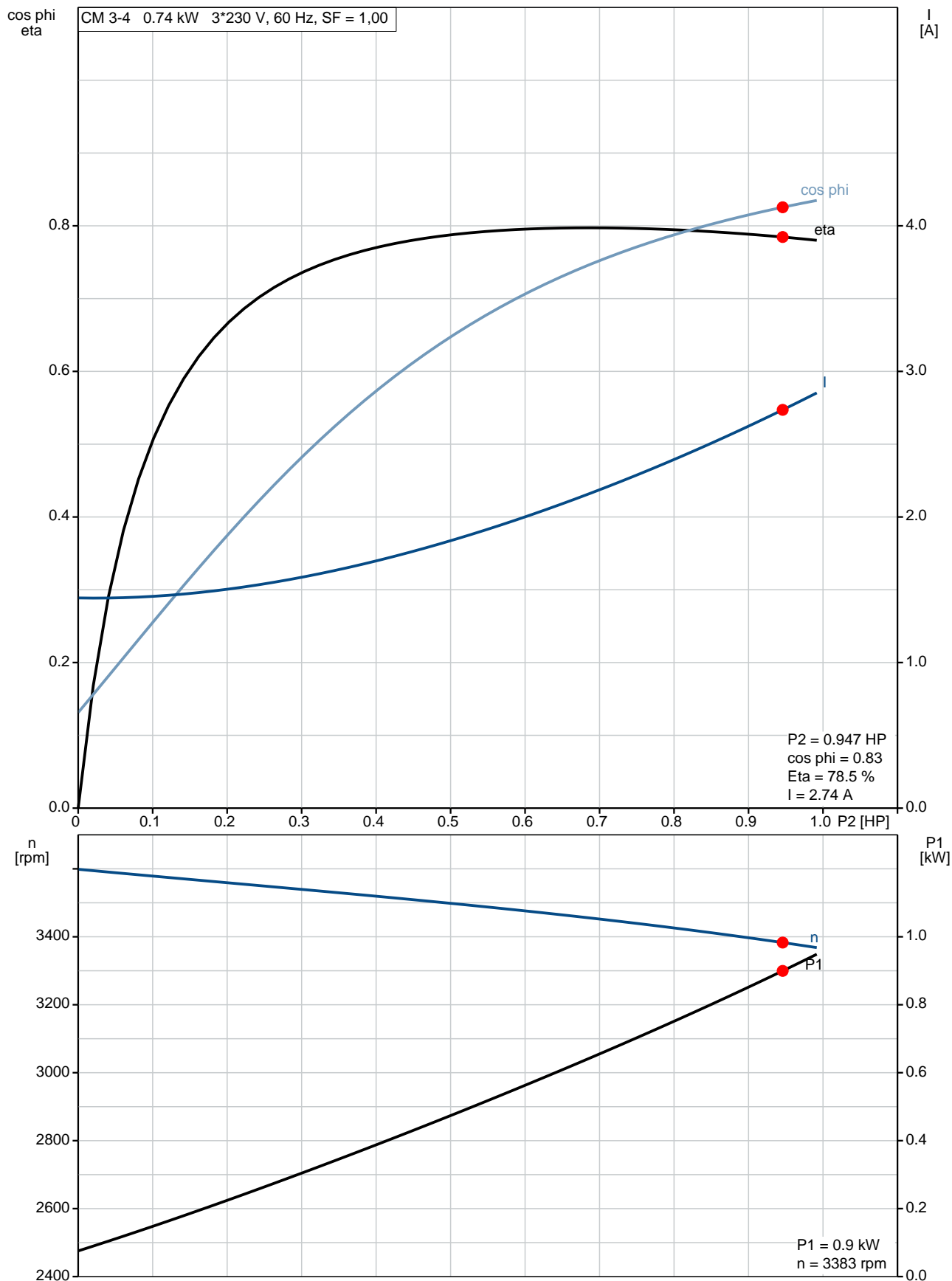
Phone:

Date:

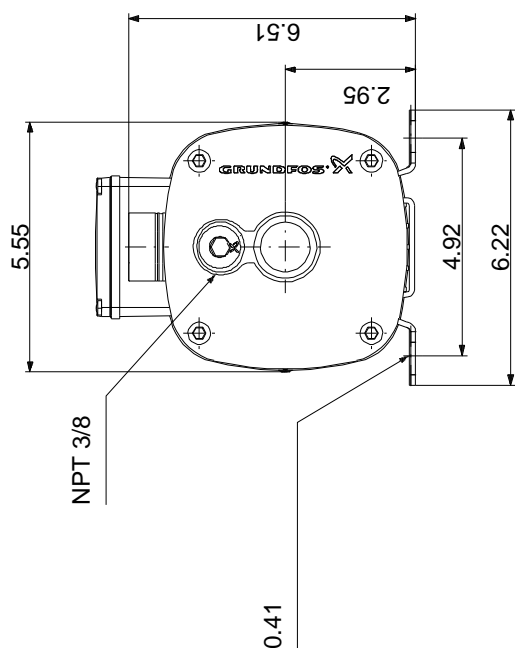
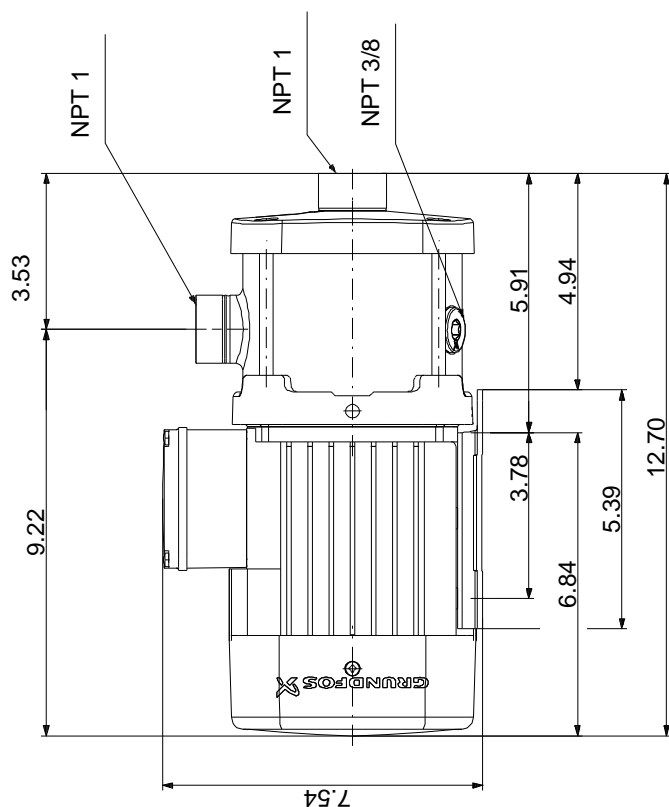
03/04/2020

| Description | Value |
|---------------------------------------|------------------------------------|
| Terminal box position: | 12 |
| Minimum efficiency index, MEI â‰¥: | 0.7 |
| Net weight: | 28.1 lb |
| Gross weight: | 33.6 lb |
| Approvals: | CE,CULUS,WRAS,ACS,TR,EA C,CURUS |
| Country of origin: | US |
| Custom tariff no.: | 8413.70.2040 |

96806895 CM 3-4 A-S-G-E-AQQE E-A-A-N 60 Hz



96806895 CM 3-4 A-S-G-E-AQQE E-A-A-N 60 Hz



Note! All units are in [in] unless others are stated.
Disclaimer: This simplified dimensional drawing does not show all details.

96806895 CM 3-4 A-S-G-E-AQQE E-A-A-N 60 Hz



WARNING

MOTOR MUST BE GROUNDED IN ACCORDANCE WITH THE NATIONAL ELECTRICAL CODE AND LOCAL CODES BY TRAINED PERSONNEL TO PREVENT SERIOUS ELECTRICAL SHOCKS.

TO SERVICE MOTOR, DISCONNECT POWER SOURCE FROM MOTOR AND ANY ACCESSORY DEVICES AND ALLOW MOTOR TO COME TO A COMPLETE STAND STILL.

LOW VOLTAGE 60Hz. 208-230V

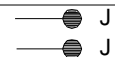


HIGH VOLTAGE 60Hz: 460V 50Hz: 400V



INTERCHANGE ANY TWO LINE
WIRES TO REVERSE ROTATION

THERMOSTAT LEADS
(WHEN PROVIDED)



Note! All units are in [in] unless others are stated.