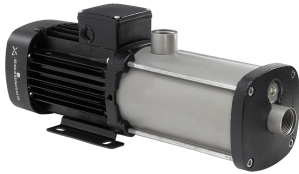


| | | |
|-----------------------|------------------------|-----------------|
| PROJECT: _____ | UNIT TAG: _____ | QUANTITY: _____ |
| REPRESENTATIVE: _____ | TYPE OF SERVICE: _____ | DATE: _____ |
| ENGINEER: _____ | SUBMITTED BY: _____ | DATE: _____ |
| CONTRACTOR: _____ | APPROVED BY: _____ | DATE: _____ |
| | ORDER NO.: _____ | DATE: _____ |

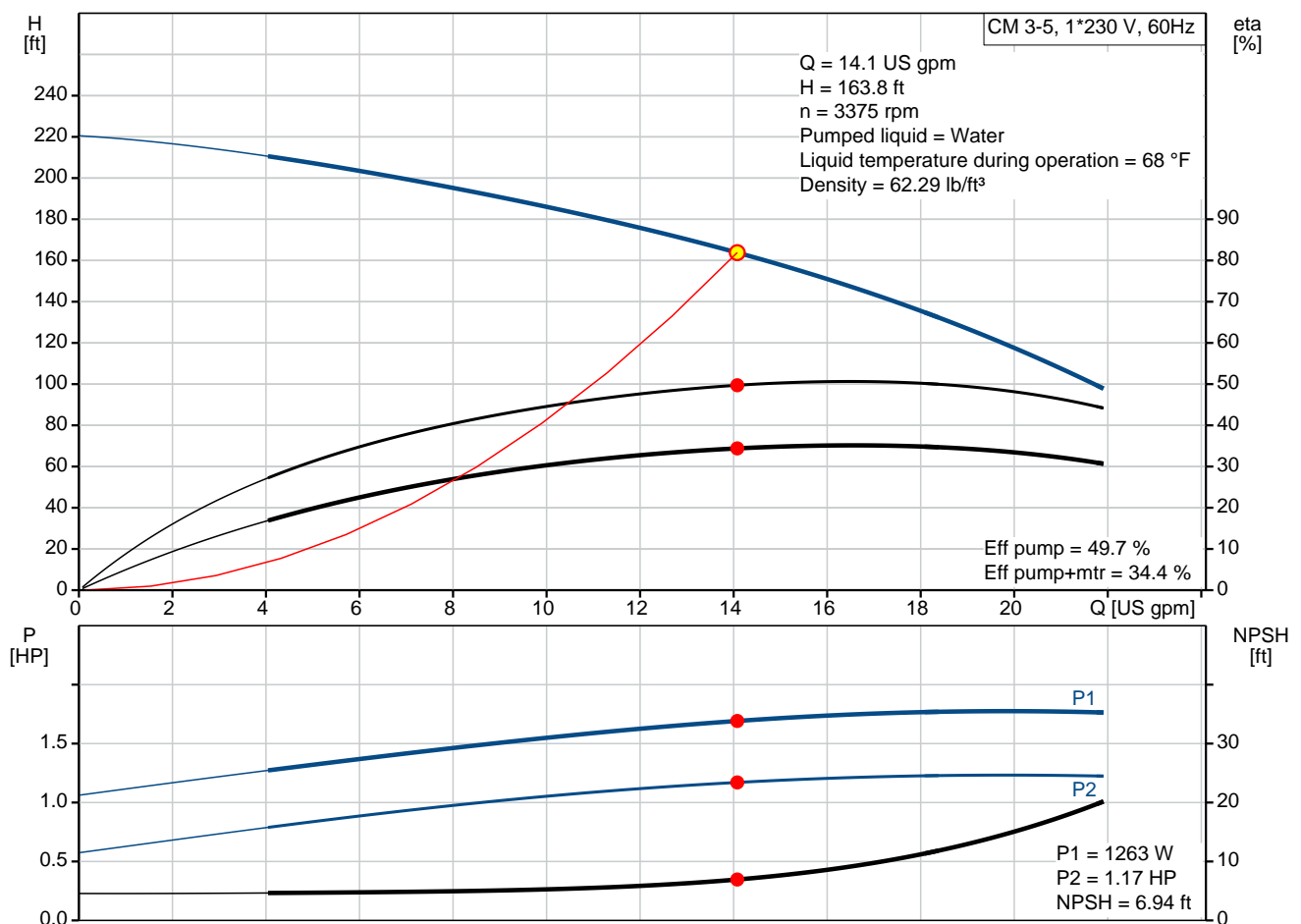
CM 3-5 A-S-G-E-AQQE B-A-A-N

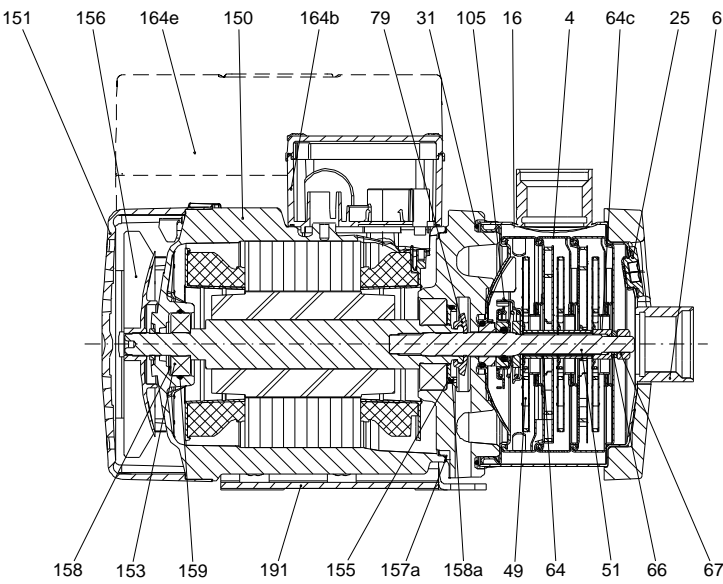
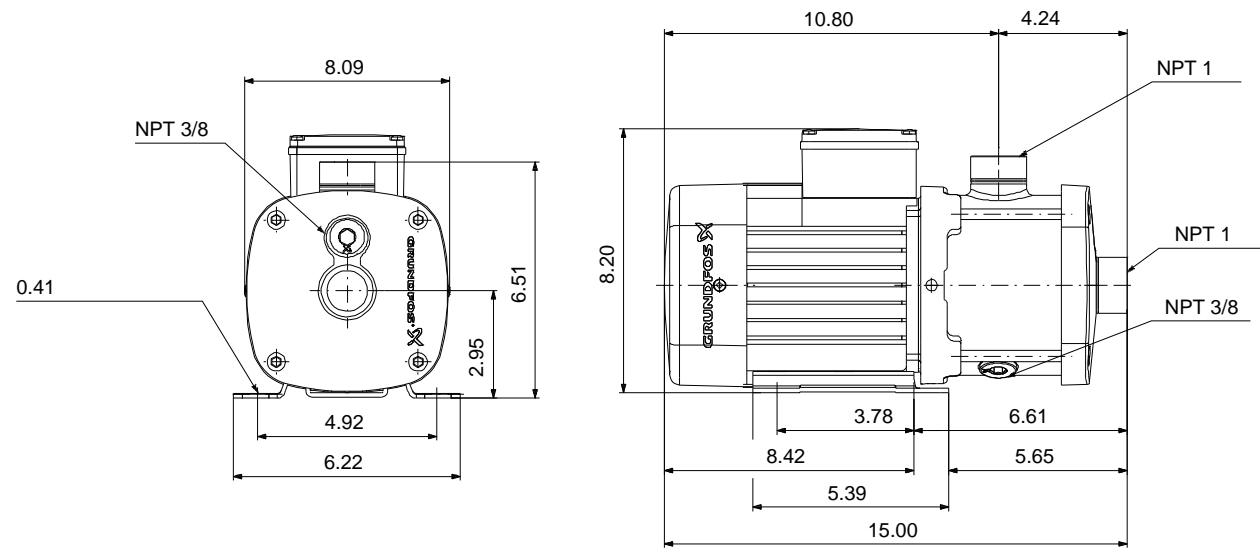


CM are reliable, quiet and compact horizontal end-suction pumps. The modular pump design makes it easy to make customised solutions. The CM pumps are available in cast iron and stainless steel

Product photo could vary from the actual product

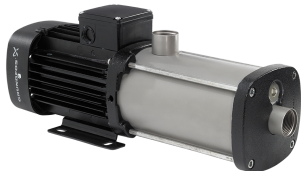
| Conditions of Service | | Pump Data | | Motor Data | |
|-----------------------|-------------|-------------------------------------|------------------|------------------|-------|
| Flow: | 14.1 US gpm | Max pressure at stated temperature: | 232 psi / 194 °F | Main frequency: | 60 Hz |
| Head: | 163.8 ft | Liquid temperature range: | -4 .. 248 °F | Enclosure class: | IP55 |
| Efficiency: | 34.4 % | Maximum ambient temperature: | 131 °F | | |
| Liquid: | Water | Shaft seal: | AQQE | | |
| Temperature: | 68 °F | Product number: | 97568299 | | |
| NPSH required: | 6.94 ft | | | | |
| Viscosity: | _____ | | | | |
| Specific Gravity: | 1.000 | | | | |





Materials:
Pump housing: Stainless steel
AISI 316
Impeller: Stainless steel
AISI 316
EN 1.4401
Material code: G
Code for rubber: E

165x100

| Count | Description |
|-------|--|
| 1 | <p>CM 3-5 A-S-G-E-AQQE B-A-A-N</p>  <p>Product photo could vary from the actual product</p> <p>Product No.: 97568299</p> <p>Compact, reliable, horizontal, multistage, end-suction centrifugal pump with axial suction port and radial discharge port. Pump materials in contact with the liquid are in high-grade stainless steel. The mechanical shaft seal is a special designed, unbalanced O-ring seal. Pipework connection is via internal NPT pipe threads. The pump is fitted with a 1-phase, foot-mounted, fan-cooled asynchronous motor.</p> <p>Controls: Frequency converter: NONE</p> <p>Liquid: Pumped liquid: Water Liquid temperature range: -4 .. 248 °F Selected liquid temperature: 68 °F Density: 62.29 lb/ft³</p> <p>Technical: Pump speed on which pump data are based: 3480 rpm Actual calculated flow: 14.1 US gpm Rated flow: 16.4 US gpm Resulting head of the pump: 163.8 ft Rated head: 162.8 ft Code for shaft seal: AQQE Curve tolerance: ISO9906:2012 3B</p> <p>Materials: Pump housing: Stainless steel EN 1.4401 AISI 316 Impeller: Stainless steel EN 1.4401 AISI 316</p> <p>Installation: Range of ambient temperature: -4 .. 131 °F Maximum operating pressure: 232.06 psi Max pressure at stated temperature: 232 psi / 194 °F 145 psi / 250 °F Type of connection: NPT(F) Size of suction port: 1 inch Size of outlet port: 1 inch Outlet position: 12</p> <p>Electrical data: Motor standard: NEMA Frame size: 80B Rated power - P2: 1.48 HP Main frequency: 60 Hz</p> |



Company name:

Created by:

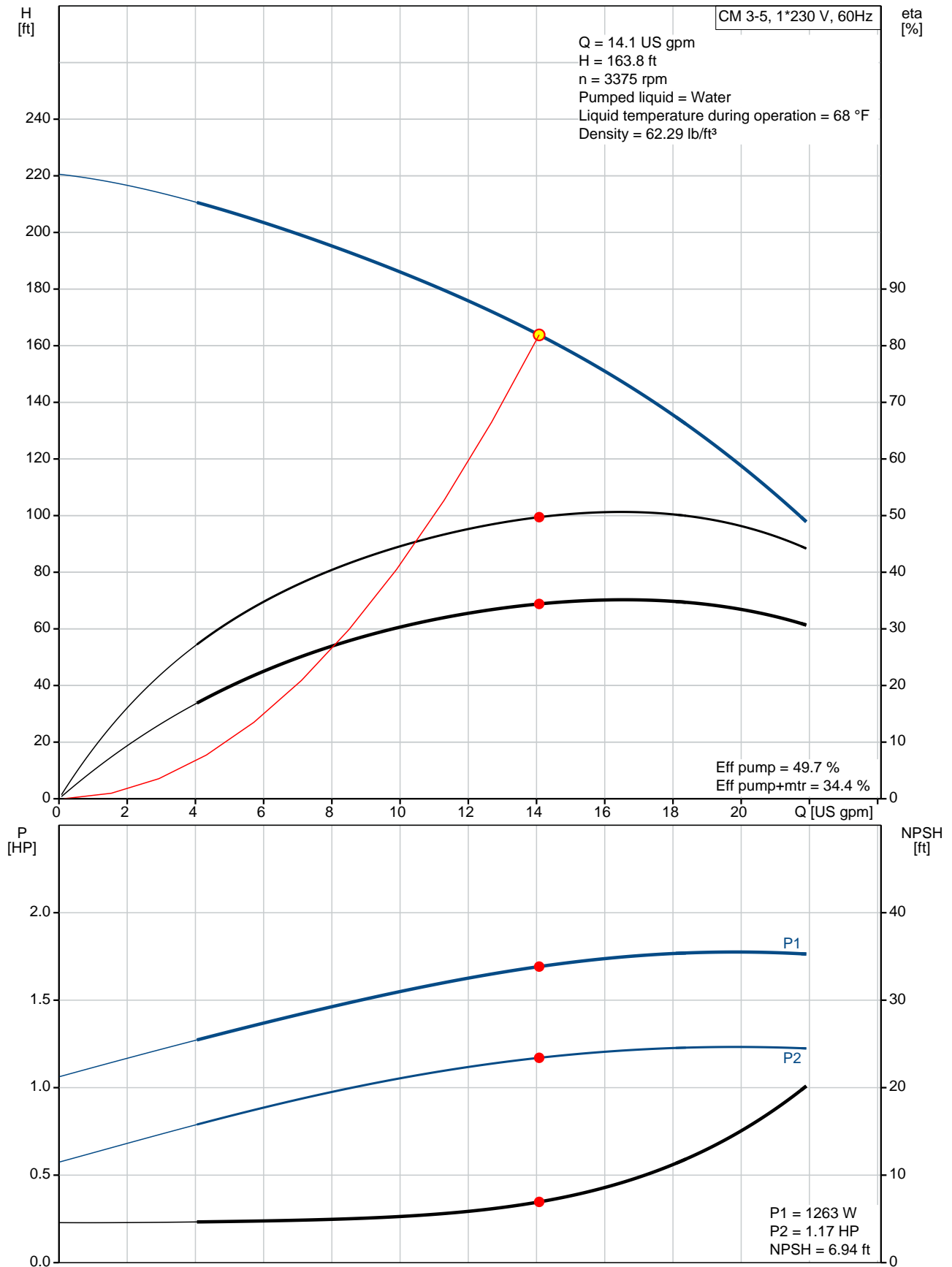
Phone:

Date:

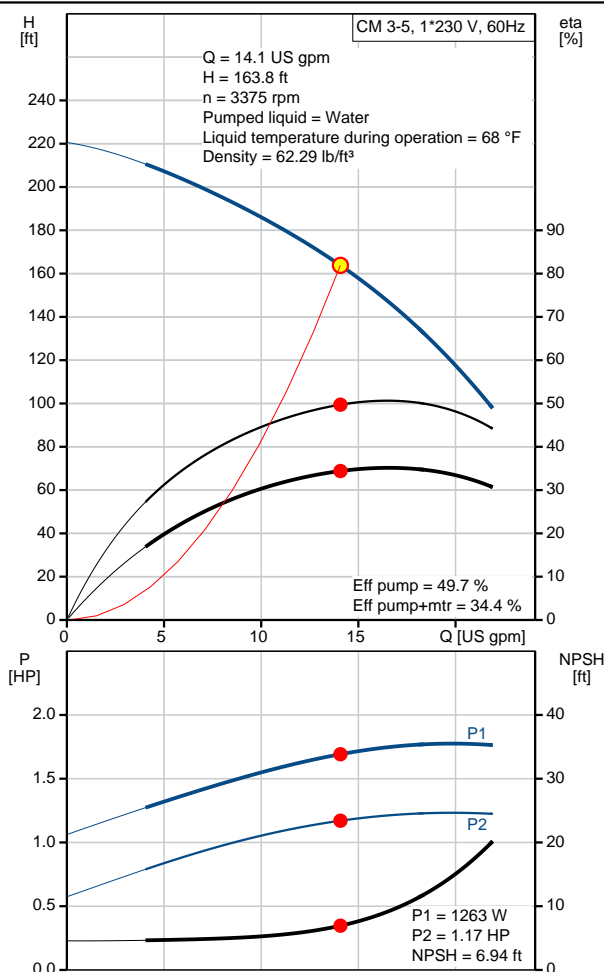
4/2/2020

| Count | Description |
|-------|---|
| | Suitable for 50/60 Hz: N |
| | Phase: 1 |
| | Rated voltage: 115/230 V |
| | Service factor: 1.00 |
| | Rated current: 14.6/7.3 A |
| | Starting current: 320-320 % |
| | Rated speed: 3320 rpm |
| | Enclosure class (IEC 34-5): IP55 |
| | Insulation class (IEC 85): F |
| | Built-in motor protection: NONE |
| | Others: |
| | Terminal box position: 12 |
| | Minimum efficiency index, MEI $\eta_{\%}$: 0.7 |
| | Net weight: 34.4 lb |
| | Gross weight: 39.9 lb |
| | Approvals: CE,CULUS,WRAS,ACS,TR,EAC,CURUS |
| | Country of origin: US |
| | Custom tariff no.: 8413.70.2040 |

97568299 CM 3-5 A-S-G-E-AQQE B-A-A-N 60 Hz



| Description | Value |
|--|--|
| General information: | |
| Product name: | CM 3-5 A-S-G-E-AQQE B-A-A-N |
| Product No.: | 97568299 |
| EAN: | 5700318668606 5700318668606 |
| Technical: | |
| Pump speed on which pump data are based: | 3480 rpm |
| Actual calculated flow: | 14.1 US gpm |
| Rated flow: | 16.4 US gpm |
| Resulting head of the pump: | 163.8 ft |
| Rated head: | 162.8 ft |
| Impellers: | 5 |
| Code for shaft seal: | AQQE |
| Curve tolerance: | ISO9906:2012 3B |
| Pump version: | A |
| Model: | A |
| Materials: | |
| Pump housing: | Stainless steel EN 1.4401 AISI 316 |
| Impeller: | Stainless steel EN 1.4401 AISI 316 |
| Material code: | G |
| Code for rubber: | E |
| Installation: | |
| Range of ambient temperature: | -4 .. 131 °F |
| Maximum operating pressure: | 232.06 psi |
| Max pressure at stated temperature: | 232 psi / 194 °F 145 psi / 250 °F |
| Type of connection: | NPT(F) |
| Size of suction port: | 1 inch |
| Size of outlet port: | 1 inch |
| Outlet position: | 12 |
| Connect code: | S |
| Liquid: | |
| Pumped liquid: | Water |
| Liquid temperature range: | -4 .. 248 °F |
| Selected liquid temperature: | 68 °F |
| Density: | 62.29 lb/ft³ |
| Electrical data: | |
| Motor standard: | NEMA |
| Frame size: | 80B |
| Rated power - P2: | 1.48 HP |
| Main frequency: | 60 Hz |
| Suitable for 50/60 Hz: | N |
| Phase: | 1 |
| Rated voltage: | 115/230 V |
| Service factor: | 1.00 |
| Rated current: | 14.6/7.3 A |
| Starting current: | 320-320 % |
| Rated speed: | 3320 rpm |
| Enclosure class (IEC 34-5): | IP55 |
| Insulation class (IEC 85): | F |
| Built-in motor protection: | NONE |
| Controls: | |





Company name:

Created by:

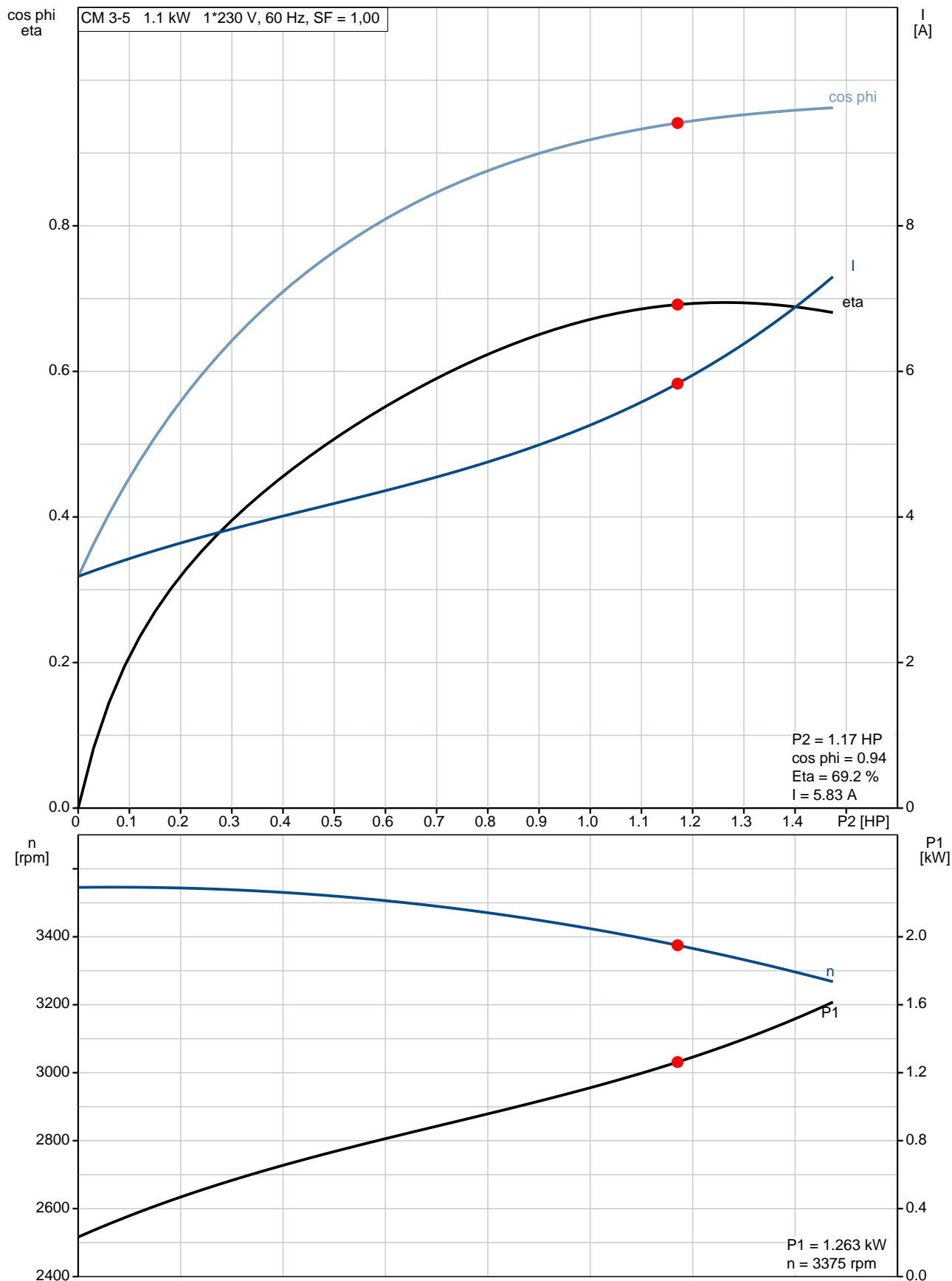
Phone:

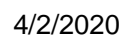
Date:

4/2/2020

| Description | Value |
|---|------------------------------------|
| Frequency converter: | NONE |
| Others: | |
| Terminal box position: | 12 |
| Minimum efficiency index, MEI â%â€:â | 0.7 |
| Net weight: | 34.4 lb |
| Gross weight: | 39.9 lb |
| Approvals: | CE,CULUS,WRAS,ACS,TR,EA C,CURUS |
| Country of origin: | US |
| Custom tariff no.: | 8413.70.2040 |

97568299 CM 3-5 A-S-G-E-AQQE B-A-A-N 60 Hz





97568299 CM 3-5 A-S-G-E-AQQE B-A-A-N 60 Hz

SUITABLE FOR FIELD CONNECTION

