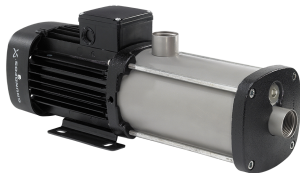


PROJECT:	_____	UNIT TAG:	_____	QUANTITY:	_____
REPRESENTATIVE:	_____	TYPE OF SERVICE:	_____	DATE:	_____
ENGINEER:	_____	SUBMITTED BY:	_____	DATE:	_____
CONTRACTOR:	_____	APPROVED BY:	_____	DATE:	_____
	_____	ORDER NO.:	_____	DATE:	_____

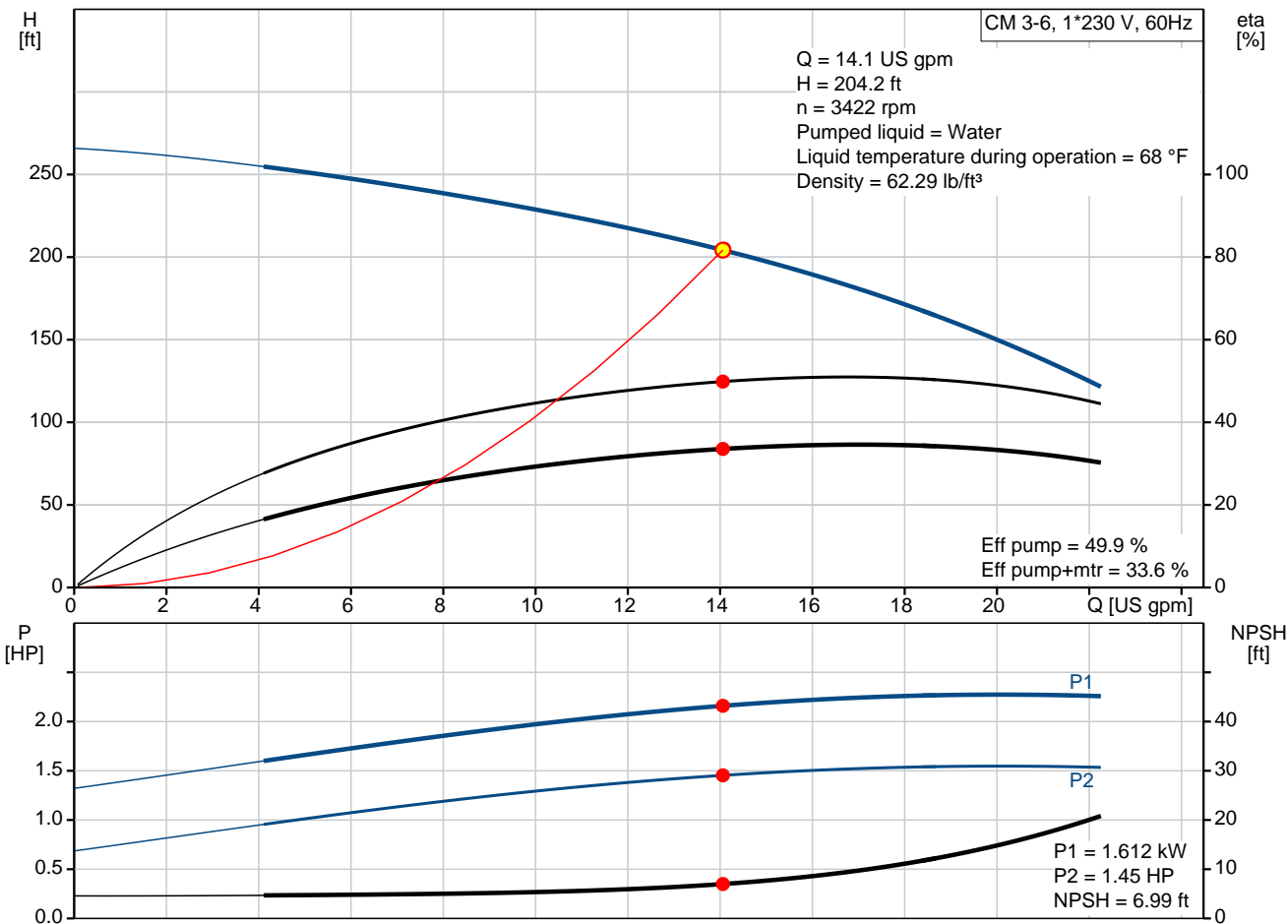
CM 3-6 A-S-G-E-AQQE B-A-A-N

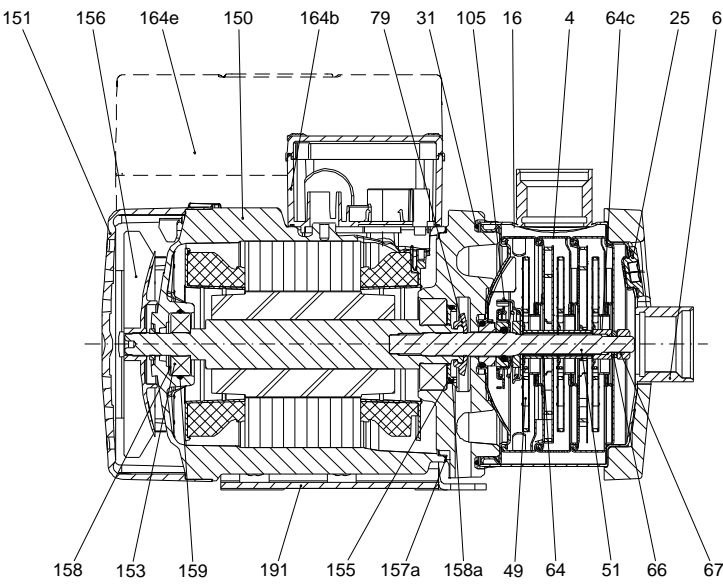
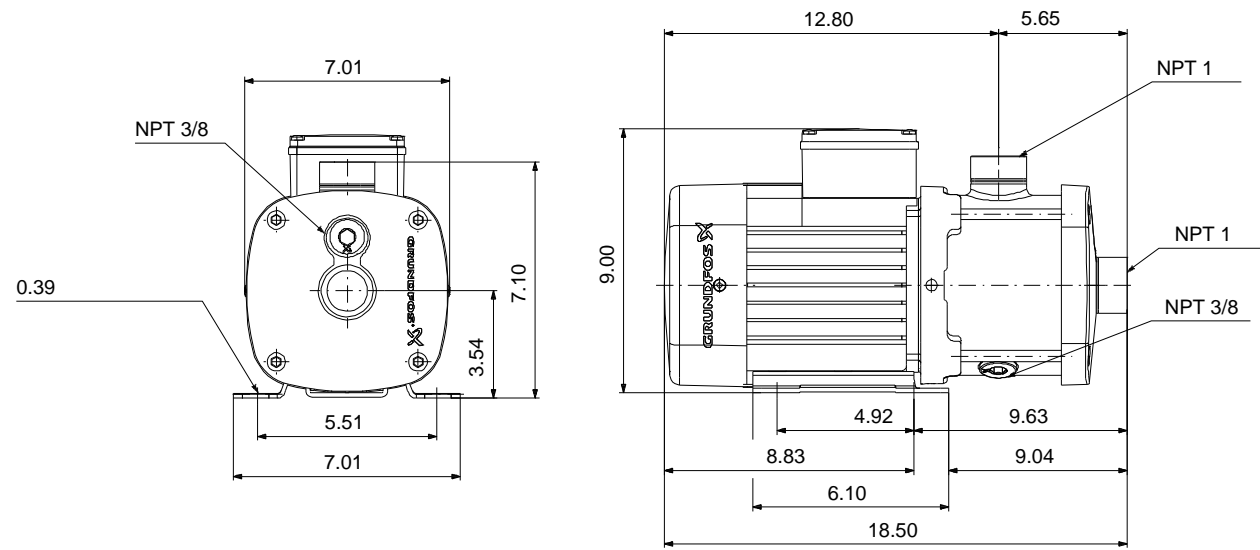


CM are reliable, quiet and compact horizontal end-suction pumps. The modular pump design makes it easy to make customised solutions. The CM pumps are available in cast iron and stainless steel

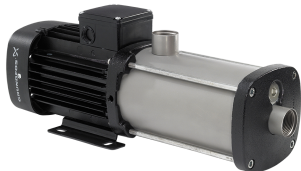
Product photo could vary from the actual product

Conditions of Service	Pump Data	Motor Data
Flow: 14.1 US gpm	Max pressure at stated temperature: 232 psi / 194 °F	Main frequency: 60 Hz
Head: 204.2 ft	Liquid temperature range: -4 .. 248 °F	Enclosure class: IP55
Efficiency: 33.6 %	Maximum ambient temperature: 131 °F	
Liquid: Water	Shaft seal: AQQE	
Temperature: 68 °F	Product number: 97568300	
NPSH required: 6.99 ft		
Viscosity: _____		
Specific Gravity: 1.000		





Materials:
Pump housing: Stainless steel
AISI 316
Impeller: Stainless steel
AISI 316
EN 1.4401
Material code: G
Code for rubber: E

Count	Description
1	<p>CM 3-6 A-S-G-E-AQQE B-A-A-N</p>  <p>Product photo could vary from the actual product</p> <p>Product No.: 97568300</p> <p>Compact, reliable, horizontal, multistage, end-suction centrifugal pump with axial suction port and radial discharge port. Pump materials in contact with the liquid are in high-grade stainless steel. The mechanical shaft seal is a special designed, unbalanced O-ring seal. Pipework connection is via internal NPT pipe threads. The pump is fitted with a 1-phase, foot-mounted, fan-cooled asynchronous motor.</p> <p>Controls: Frequency converter: NONE</p> <p>Liquid: Pumped liquid: Water Liquid temperature range: -4 .. 248 °F Selected liquid temperature: 68 °F Density: 62.29 lb/ft³</p> <p>Technical: Pump speed on which pump data are based: 3480 rpm Actual calculated flow: 14.1 US gpm Rated flow: 16.4 US gpm Resulting head of the pump: 204.2 ft Rated head: 196.2 ft Code for shaft seal: AQQE Curve tolerance: ISO9906:2012 3B</p> <p>Materials: Pump housing: Stainless steel EN 1.4401 AISI 316 Impeller: Stainless steel EN 1.4401 AISI 316</p> <p>Installation: Range of ambient temperature: -4 .. 131 °F Maximum operating pressure: 232.06 psi Max pressure at stated temperature: 232 psi / 194 °F 145 psi / 250 °F Type of connection: NPT(F) Size of suction port: 1 inch Size of outlet port: 1 inch Outlet position: 12</p> <p>Electrical data: Motor standard: NEMA Frame size: 90B Rated power - P2: 2.01 HP Main frequency: 60 Hz</p>



Company name:

Created by:

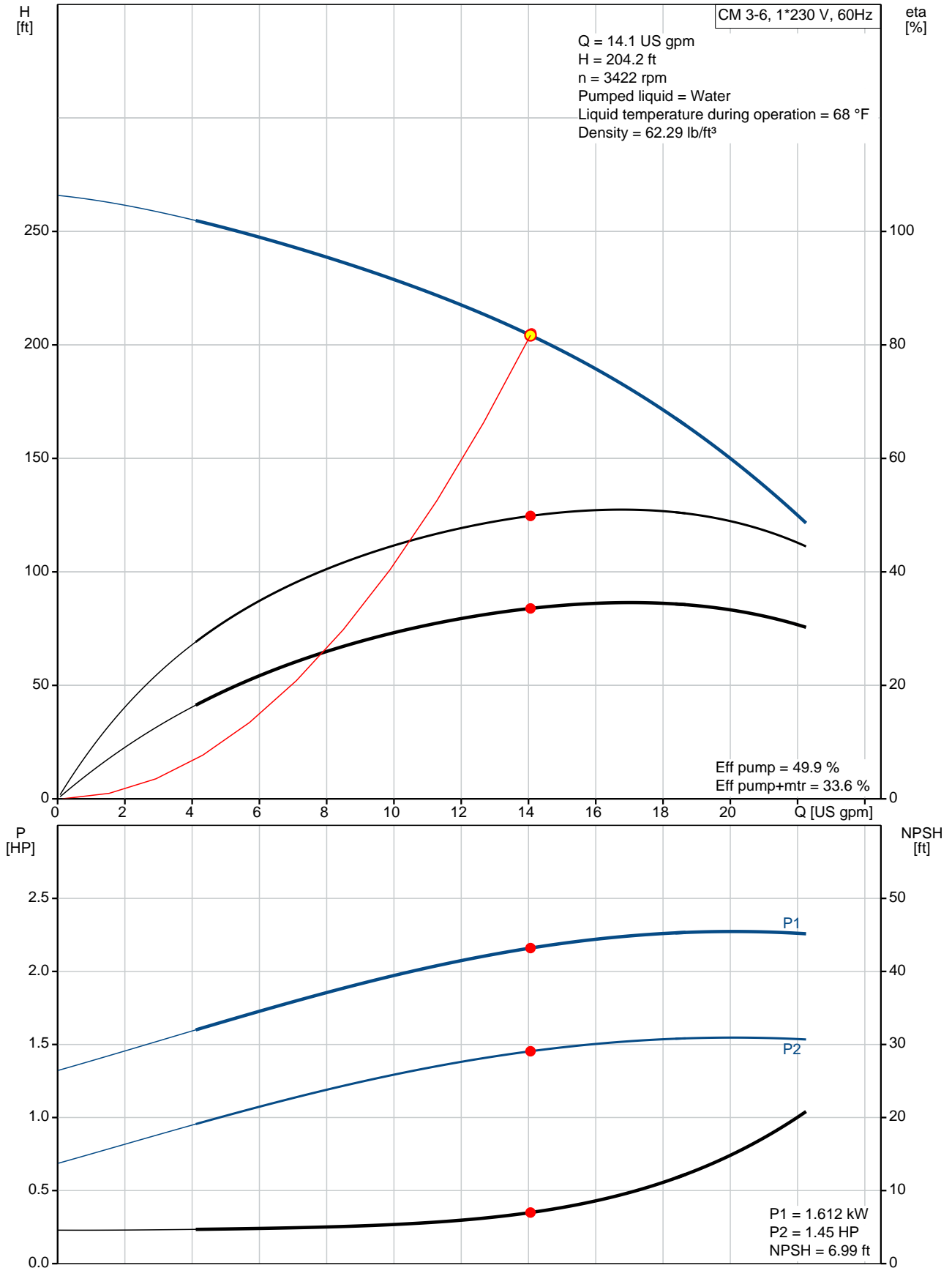
Phone:

Date:

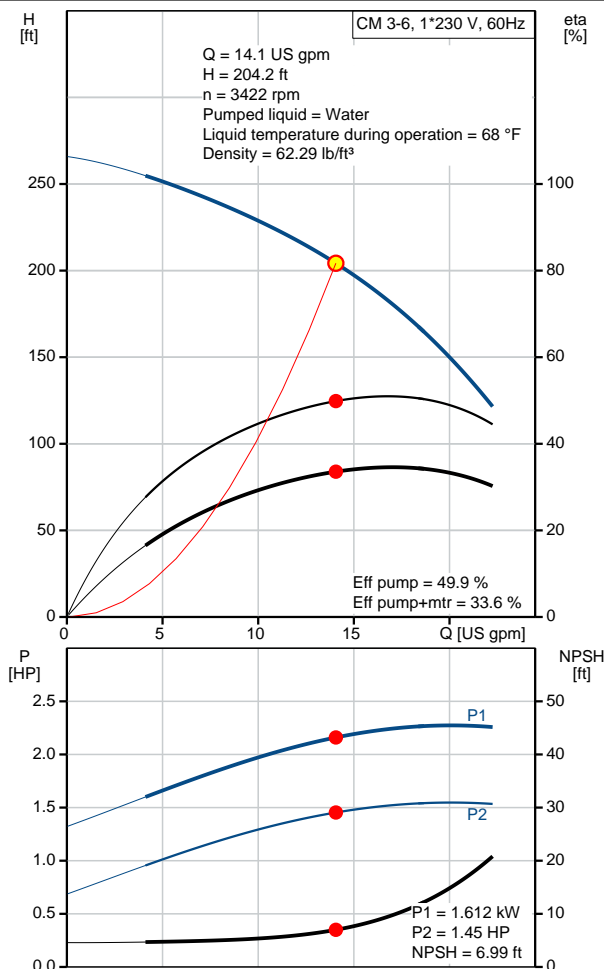
4/2/2020

Count	Description
	Suitable for 50/60 Hz: N
	Phase: 1
	Rated voltage: 115/230 V
	Service factor: 1.00
	Rated current: 18.8/9.8 A
	Starting current: 400-400 %
	Rated speed: 3360 rpm
	Enclosure class (IEC 34-5): IP55
	Insulation class (IEC 85): F
	Built-in motor protection: NONE
	Others:
	Terminal box position: 12
	Minimum efficiency index, MEI $\eta_{\%}$: 0.7
	Net weight: 52.7 lb
	Gross weight: 58.3 lb
	Approvals: CE,CULUS,WRAS,ACS,TR,EAC,CURUS
	Country of origin: US
	Custom tariff no.: 8413.70.2040

97568300 CM 3-6 A-S-G-E-AQQE B-A-A-N 60 Hz



Description	Value
General information:	
Product name:	CM 3-6 A-S-G-E-AQQE B-A-A-N
Product No.:	97568300
EAN:	5700318668613 5700318668613
Technical:	
Pump speed on which pump data are based:	3480 rpm
Actual calculated flow:	14.1 US gpm
Rated flow:	16.4 US gpm
Resulting head of the pump:	204.2 ft
Rated head:	196.2 ft
Impellers:	6
Code for shaft seal:	AQQE
Curve tolerance:	ISO9906:2012 3B
Pump version:	A
Model:	A
Materials:	
Pump housing:	Stainless steel EN 1.4401 AISI 316
Impeller:	Stainless steel EN 1.4401 AISI 316
Material code:	G
Code for rubber:	E
Installation:	
Range of ambient temperature:	-4 .. 131 °F
Maximum operating pressure:	232.06 psi
Max pressure at stated temperature:	232 psi / 194 °F 145 psi / 250 °F
Type of connection:	NPT(F)
Size of suction port:	1 inch
Size of outlet port:	1 inch
Outlet position:	12
Connect code:	S
Liquid:	
Pumped liquid:	Water
Liquid temperature range:	-4 .. 248 °F
Selected liquid temperature:	68 °F
Density:	62.29 lb/ft³
Electrical data:	
Motor standard:	NEMA
Frame size:	90B
Rated power - P2:	2.01 HP
Main frequency:	60 Hz
Suitable for 50/60 Hz:	N
Phase:	1
Rated voltage:	115/230 V
Service factor:	1.00
Rated current:	18.8/9.8 A
Starting current:	400-400 %
Rated speed:	3360 rpm
Enclosure class (IEC 34-5):	IP55
Insulation class (IEC 85):	F
Built-in motor protection:	NONE
Controls:	





Company name:

Created by:

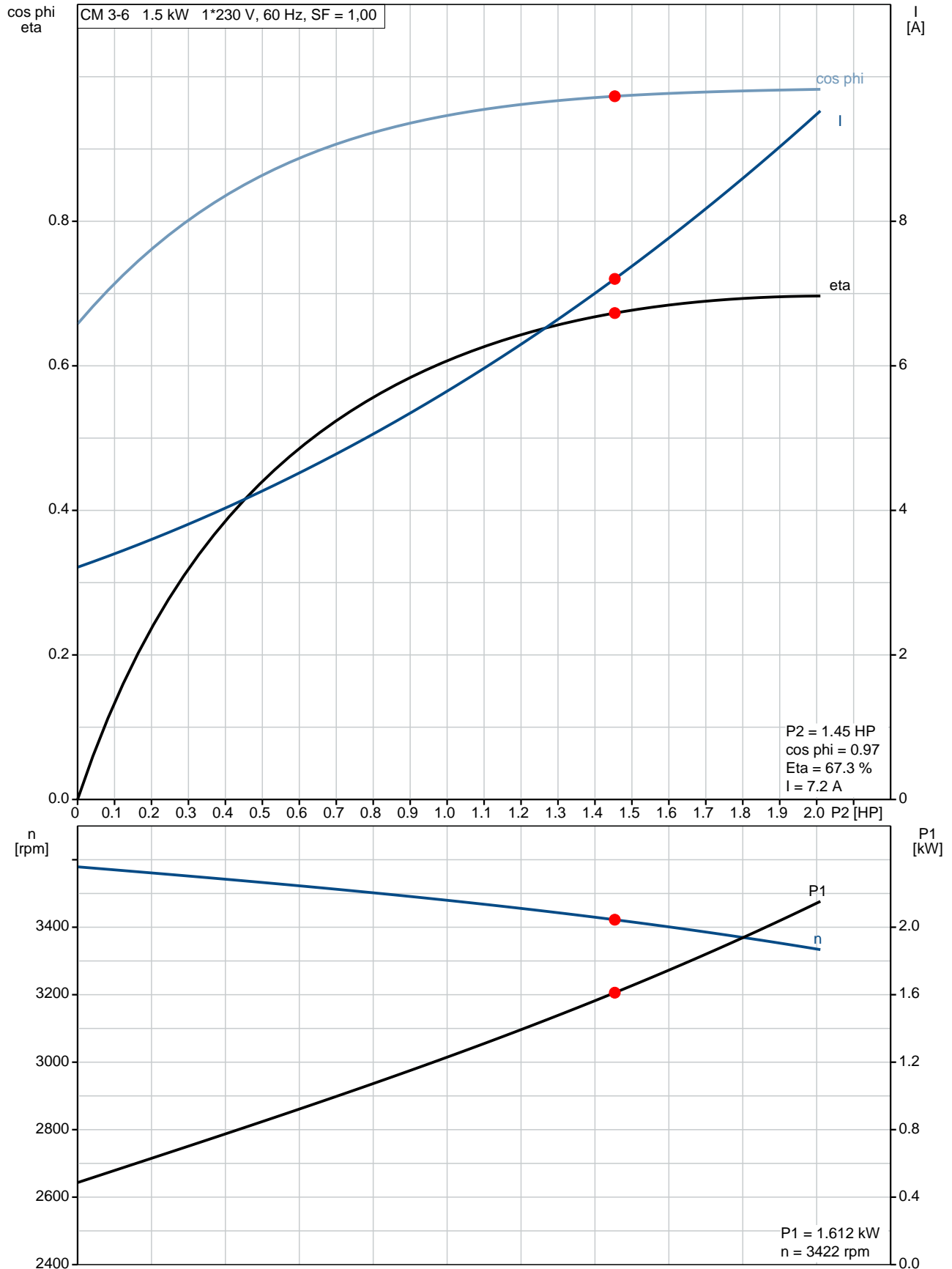
Phone:

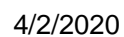
Date:

4/2/2020

Description	Value
Frequency converter:	NONE
Others:	
Terminal box position:	12
Minimum efficiency index, MEI â%â€:â€:	0.7
Net weight:	52.7 lb
Gross weight:	58.3 lb
Approvals:	CE,CULUS,WRAS,ACS,TR,EA C,CURUS
Country of origin:	US
Custom tariff no.:	8413.70.2040

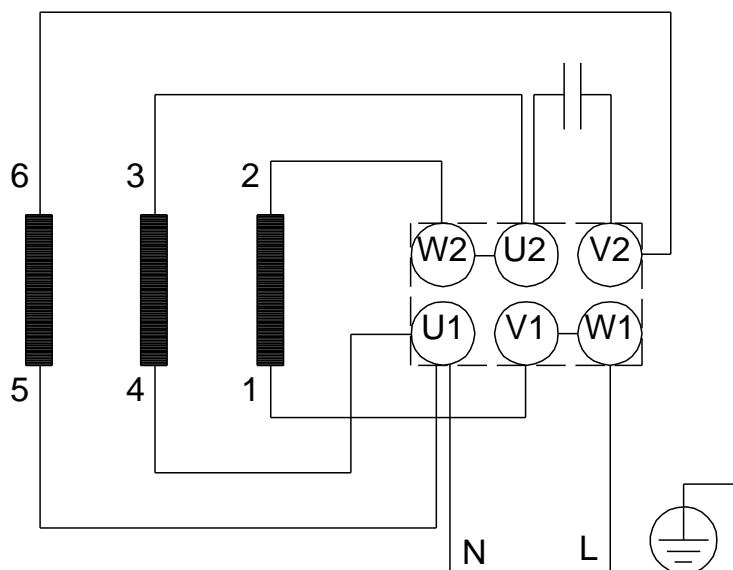
97568300 CM 3-6 A-S-G-E-AQQE B-A-A-N 60 Hz



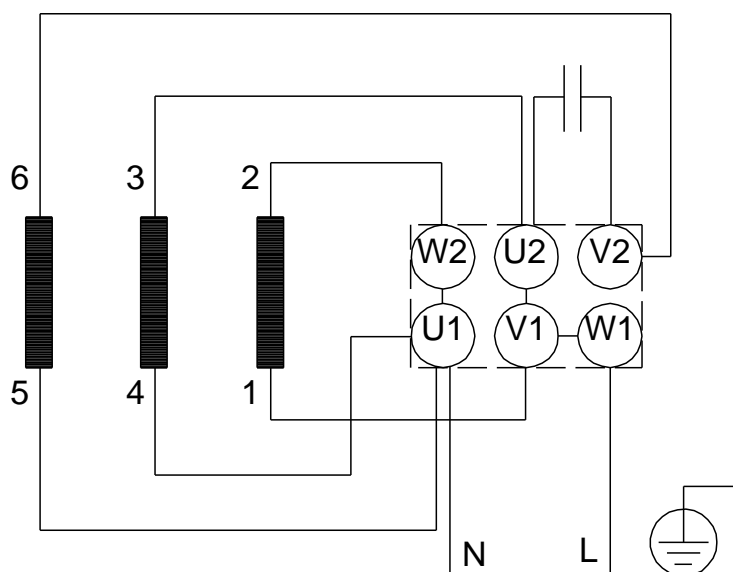


97568300 CM 3-6 A-S-G-E-AQQE B-A-A-N 60 Hz

HIGH VOLTAGE



LOW VOLTAGE



All units are [in] unless otherwise presented.