



# SIMPLEX/DUPLEX WASTEWATER DISCONNECT STYLE PANELS

## Wastewater

## PANEL FEATURES

Oversize enclosure to accommodate all options.

One main disconnect through-the-door with door interlock, **prevents the door from accidentally being opened when the disconnect is in the ON position. Pad-lockable in the OFF position only.**

A manual lockable disconnect feature on the motor overload protector. Lock not provided.

Oversize magnetic contactor.

Ambient compensated bi-metallic (Class 10) motor overload circuit protector. Instantaneous magnetic trip for short circuit protection. Single-phase protection for three-phase motor. Field adjustable within the amp. range.

Control transformer with fused primary and fused secondary on all three-phase. Single-phase 115 volt has a fused control circuit.

Through-door hand-off-auto switch, control on/off switch and green pump run light.

Numbered and wired control terminal board.

Layout and schematic CAD diagrams can be provided upon request.

Optional alarm circuit may be field modified to use a 115 volt AC external power source.

## APPLICATIONS

Superior quality simplex and duplex liquid level controller automatically maintains pump operation. Includes high-level alarm warning for a variety of sump, effluent, sewage and water transfer applications with ability to disconnect power at panels.

## SPECIFICATIONS - 1Ø AND 3Ø

- Accepts single or dual power feed.
- Solid state printed circuit control board with float indicator lights.
- Main disconnect
- Alternator for duplex version
- Alarm horn
- Auxiliary alarm contacts
- Capacitors for pumps requiring external motor components are not included or available with this panel.

## Single Phase

- Field adjustable for 115 or 230 V, 60 Hz.
- Adjustable motor overload protectors redundant to built-in overload in single phase motors.

## Three Phase

- Field adjustable for 208/230/460/575 V, 60 Hz.
- 115 V control circuit transformer.
- Adjustable motor overload protectors.
- **Heaters not required.**

## ORDER NUMBERS

	Phase	NEMA 1	NEMA 4X	Amp Rating
Simplex	1	CSD14063N1	CSD14063	4.0-6.3
		CSD16310N1	CSD16310	6.3-10
		CSD11016N1	CSD11016	10-16
		CSD11620N1	CSD11620	16-20
		CSD12025N1	CSD12025	20-25
		CSD12232N1	CSD12232	22-32
	3	CSD31625N1	CSD31625	1.6-2.5
		CSD32540N1	CSD32540	2.5-4.0
		CSD34063N1	CSD34063	4.0-6.3
		CSD36310N1	CSD36310	6.3-10
		CSD31016N1	CSD31016	10-16
		CSD31620N1	CSD31620	16-20
		CSD32025N1	CSD32025	20-25
		CSD32232N1	CSD32232	22-32
Duplex	1	CDD14063N1	CDD14063	4.0-6.3
		CDD16310N1	CDD16310	6.3-10
		CDD11016N1	CDD11016	10-16
		CDD11620N1	CDD11620	16-20
		CDD12025N1	CDD12025	20-25
		CDD12232N1	CDD12232	22-32
	3	CDD31625N1	CDD31625	1.6-2.5
		CDD32540N1	CDD32540	2.5-4.0
		CDD34063N1	CDD34063	4.0-6.3
		CDD36310N1	CDD36310	6.3-10
		CDD31016N1	CDD31016	10-16
		CDD31620N1	CDD31620	16-20
		CDD32025N1	CDD32025	20-25
		CDD32232N1	CDD32232	22-32

**NOTE:** NEMA 4X panel selections are dead front with an inner door

## NOMENCLATURE

Character	Description
1 <sup>st</sup>	C = Centripro
2 <sup>nd</sup>	S = Simplex, D = Duplex
3 <sup>rd</sup>	D = Disconnect
4 <sup>th</sup>	1 = single phase - 115/230 volt 3 = 3 phase - 208/230/460/575 volt
5 <sup>th</sup> - 8 <sup>th</sup>	116 = 1.0-1.6 amp range, 1625 = 1.6-2.5 amp range, 2540 = 2.5-4.0 amp range, 4063 = 4.0-6.3 amp range, 6310 = 6.3-10.0 amp range, 1016 = 10-16 amp range, 1620 = 16-20 amp range, 2025 = 20-25 amp range, 2232 = 22-32 amp range (amp ratings of 22-25 overlap on the last two ratings, when in doubt go to larger range)
9 <sup>th</sup> - 10 <sup>th</sup>	N1 = Nema 1, Nothing in 9th and 10th character for Nema 4X.

## Wastewater

### ADDITIONAL OPTIONS

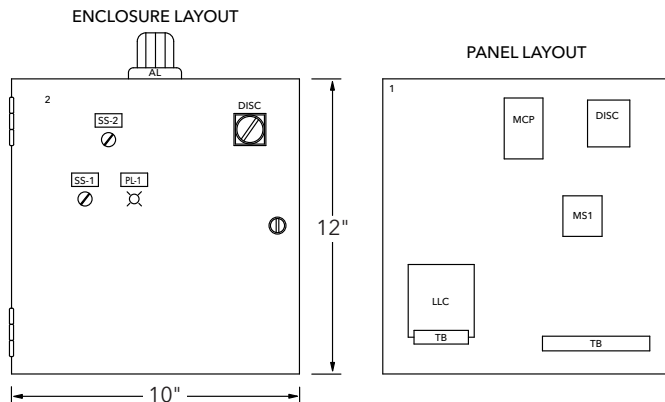
**Code** (add as required)

- A = Guaranteed pump submergence circuit
- C = 115V condensation heater
- D = Single phase lightning arrestor
- E = Three phase lightning arrestor
- F = Elapsed time meter (1) - simplex
- H = Seal fail circuit (1) - simplex
- K = Cycle counter - Simplex
- M = High temp. indicator with shutdown - Simplex
- O = Special simplex seal fail and high temperature circuit for use on only three phase 15/20GD, 15/20GX, 1GA/2GA, GV Plus and Impact pumps. For single phase, see CentriPro single phase grinder control panels bulletin BCP1PGP for standard, BCP1PC1P for explosion proof.
- R = Simplex 3SDX/4SDX/4NS/4XD Seal Fail
- Y = Simplex dry contact for seal failure interface to building management system.
- Z = Simplex dry contact for pump running interface to building management system.

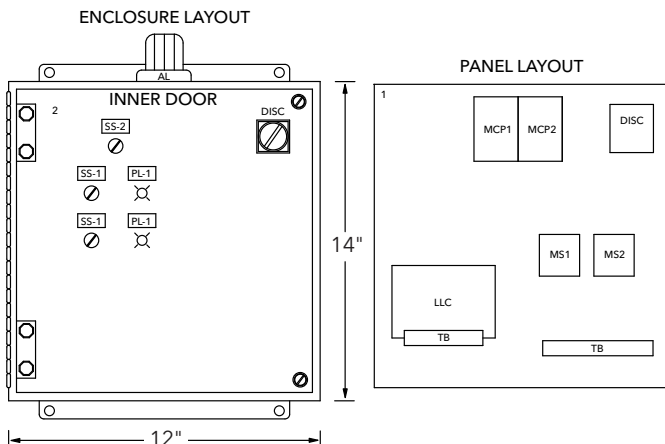
When ordering options, add the appropriate code number as a suffix to the panel order number.

Example: S10020CF adds a cond. heater and (1) elapsed time meter.

### SIMPLEX 1Ø ENCLOSURE LAYOUT



### DUPLEX 1Ø ENCLOSURE LAYOUT



### ADDITIONAL OPTIONS

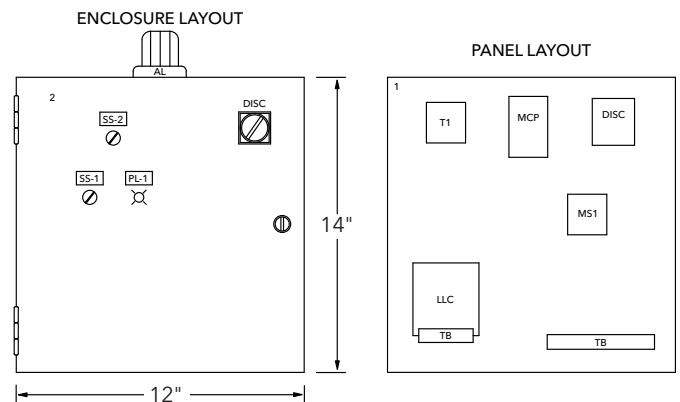
**Code** (add as required)

- A = Guaranteed pump submergence circuit
- C = 115V condensation heater
- D = Single phase lightning arrestor
- E = Three phase lightning arrestor
- G = Elapsed time meter (2) - Duplex
- J = Seal fail circuit (2) - Duplex
- L = Cycle counter (2) - Duplex
- N = High temp. indicator with pump shutdown - Duplex
- P = Special duplex Mini CAS seal fail and high temperature circuit for use on only three phase 15/20GD, 15/20GX, 1GA/2GA, GV Plus and Impact pumps. For single phase, see CentriPro single phase grinder control panels bulletin BCP1PGP for standard, BCP1PC1P for explosion proof.
- T = 4 intrinsically safe relays in duplex panel
- V = Duplex 3SDX/4SDX/4NS/4XD Seal Fail
- YY = Duplex dry contact for seal failure interface to building management system.
- ZZ = Duplex dry contact for pump running interface to building management system.

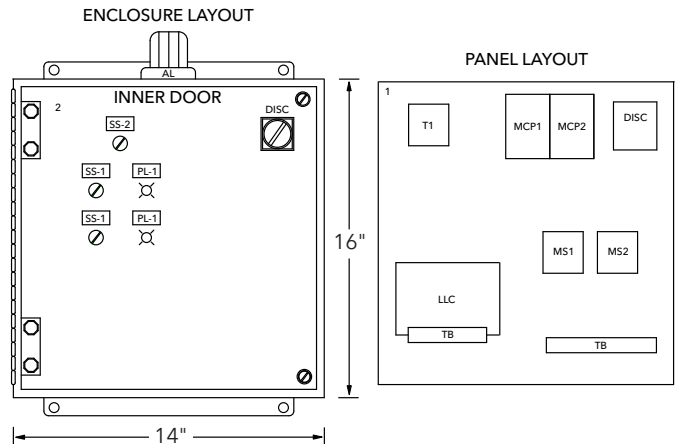
When ordering options, add the appropriate code number as a suffix to the panel order number.

Example...D31625CG adds a condensation heater and (2) elapsed time meters.

### SIMPLEX 3Ø ENCLOSURE LAYOUT

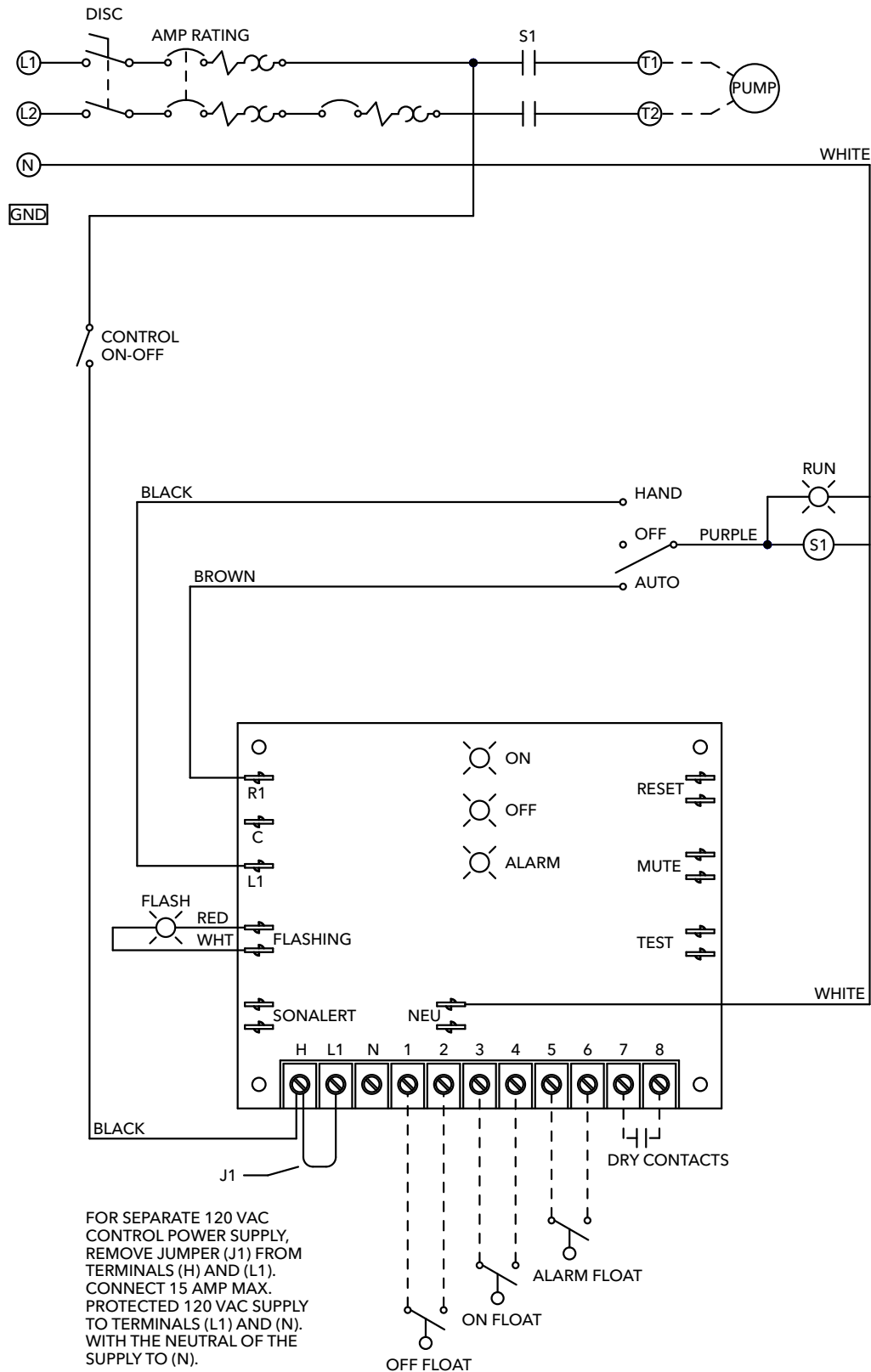


### DUPLEX 3Ø ENCLOSURE LAYOUT



### SIMPLEX PANEL INSTALLATION - SINGLE PHASE

115/230 VAC (FOR 115 VAC, USE TERMINALS L1 AND N, JUMP L2 AND N.)  
SINGLE PHASE 60 HZ

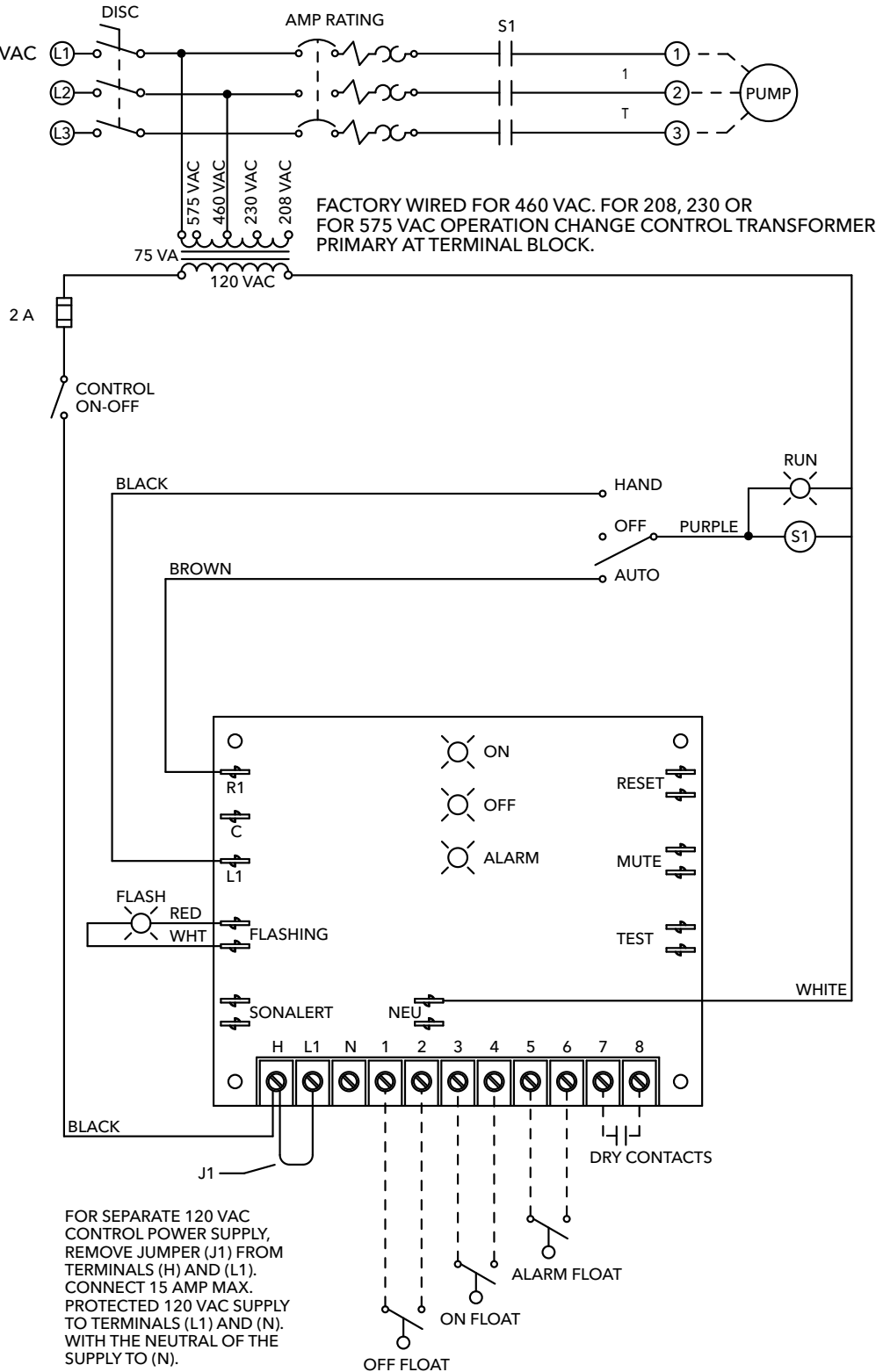


FOR USE WITH WIDE ANGLE FLOAT SWITCH (ONE FLOAT FOR BOTH ON AND OFF OPERATION). JUMP TERMINALS (3) AND (4), INSTALL WIDE ANGLE FLOAT TO TERMINALS (1) AND (2).

### SIMPLEX PANEL INSTALLATION - THREE PHASE

PROVIDE DISCONNECT  
PER NEC CODE

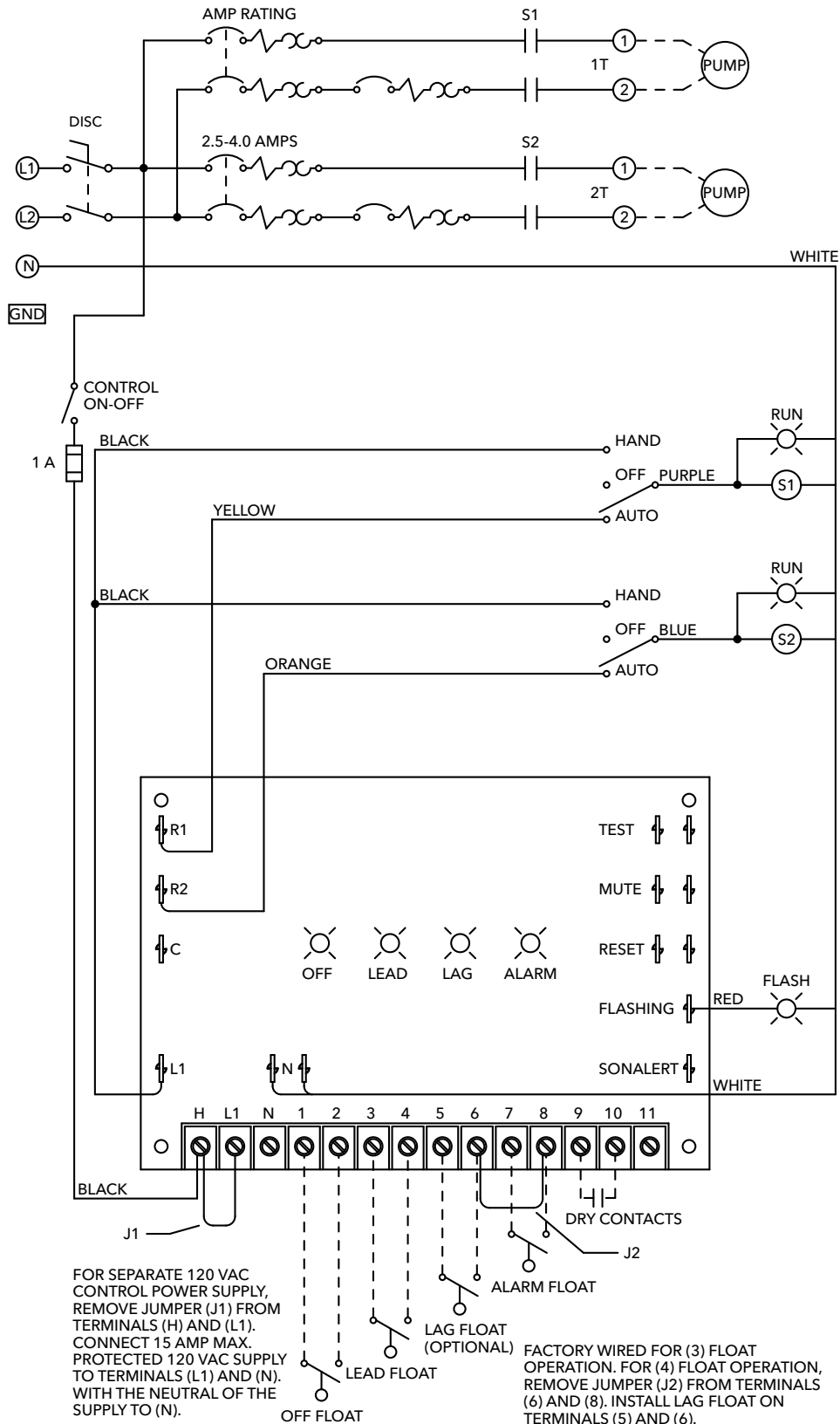
208/230/460/575 VAC  
3 PHASE  
60 HZ



FOR USE WITH WIDE ANGLE FLOAT SWITCH (ONE FLOAT FOR BOTH ON AND OFF OPERATION). JUMP TERMINALS (3) AND (4), INSTALL WIDE ANGLE FLOAT TO TERMINALS (1) AND (2).

### DUPLEX PANEL INSTALLATION - SINGLE PHASE

115/230 VAC (FOR 115 VAC, USE TERMINALS L1 AND N, JUMP L2 AND N.)  
SINGLE PHASE 60 HZ



FOR USE WITH WIDE ANGLE FLOAT SWITCH (ONE FLOAT FOR BOTH ON AND OFF OPERATION). JUMP TERMINALS (3) AND (4), INSTALL WIDE ANGLE FLOAT TO TERMINALS (1) AND (2).



# Xylem |'zīləm|

- 1) The tissue in plants that brings water upward from the roots;
- 2) a leading global water technology company.

We're a global team unified in a common purpose: creating advanced technology solutions to the world's water challenges. Developing new technologies that will improve the way water is used, conserved, and re-used in the future is central to our work. Our products and services move, treat, analyze, monitor and return water to the environment, in public utility, industrial, residential and commercial building services settings. Xylem also provides a leading portfolio of smart metering, network technologies and advanced analytics solutions for water, electric and gas utilities. In more than 150 countries, we have strong, long-standing relationships with customers who know us for our powerful combination of leading product brands and applications expertise with a strong focus on developing comprehensive, sustainable solutions.

**For more information on how Xylem can help you, go to [www.xyleminc.com](http://www.xyleminc.com)**



Xylem Inc.  
2881 East Bayard Street Ext., Suite A  
Seneca Falls, NY 13148  
Phone: (866) 325-4210  
Fax: (888) 322-5877  
[www.xylem.com/centripro](http://www.xylem.com/centripro)

CentriPro is a trademark of Xylem Inc. or one of its subsidiaries.  
© 2019 Xylem Inc. BCPSDWWP R5 November 2019