

MINI Pump | SP-MPP

Description

Standard's Drum Pumps are designed to transfer chemicals from a variety of drums and storage vessels. Standard Pump offers several different pumps, each designed for specific applications. Before operating, please confirm that the pump's materials of construction are suitable for the application.

Unpacking

Cartons should be handled with care to avoid damage from dropping, etc. After unpacking, inspect carefully for any damage that may have occurred during transit. Check for loose, damaged or missing parts.

General Safety Information

The responsibility for safe assembly, installation, and operation ultimately rests with the operator. Read and understand ALL safety precautions and operating instructions before operation. Careless pump operation can result in serious injury.

1. Before operating the pump, read and understand these operating instructions.
2. The operator should wear suitable protective clothing including the following: face mask, safety shield or goggles, gloves, apron, and safety shoes.
3. Before operating, verify the materials being pumped are compatible with the pump's "wetted components."

4. All Federal, State, and local safety codes should be followed.
5. Verify that the motor voltage corresponds to proper electrical supply. Before plugging motor into power supply, make sure the motor switch is in the OFF position. For Air Motors ensure inlet valve is closed before attaching air line.
6. Before operation, confirm all pump connections are properly tightened.
7. First pump clean water in order to familiarize yourself with the pump's operation, flow rate, discharge pressure and motor speed.
8. Before starting the pump, confirm the discharge hose is securely fastened to the receiving vessel in order to prevent splashing.
9. Never leave pump unattended during operation.
10. Do not submerge the motor in any liquid.
11. When finished using the pump, flush the pump by pumping water or an appropriate cleaning solution. Do not use flammable or combustible cleaning solutions.
12. Never carry the motor by the power cord.
13. This pump is NOT intended for transferring flammable/combustible media or for use in hazardous duty environments. Failure to comply may result in serious injury.

Assembly

1. Remove the pump and motor from packaging.
2. Inspect all contents for damage.
3. Couple the motor to the pump tube by using the Connection Nut (see Figure 1).

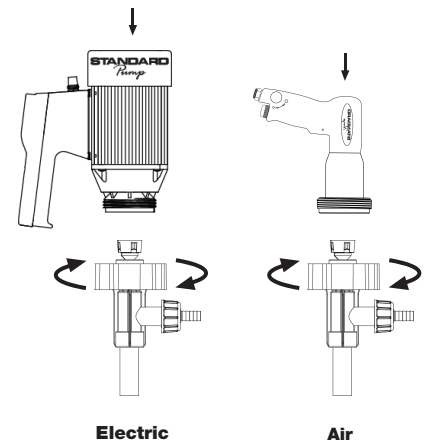


Figure 1

SP-MPP Specifications

Model	Immersion Length	Wetted Components	Motors Drive	Discharge Size	Max Viscosity	Max Discharge Pressure	Max Flow Rate	Max Temp	Pump Weight
SP-MPP	20" (500 mm) 27" (700 mm) 39" (1000 mm)	Polypropylene, Carbon, & Hastelloy C	SP-280P, SP-ENC, SP-A2 Series	1/2" Hose Barb	100 cps (mPas)*	6 psi (0,41 bar)	5.3 GPM (20 LPM)	130° F (55°C)	4 lbs (1,8 kg)

Note: Flow rates are based on water. As viscosity increases, the flow rate will decrease.

*Pump is intended for intermittent use.



This pump is NOT suitable for use with flammable/combustible liquids.

SP-MPP

⚠ WARNING

When using an SP-A2 Series motor, Standard Pump recommends the use of a Filter Lubricator Regulator (FLR) in order to ensure a moisture free supply of air to the motor.

⚠ WARNING

SP-A2 Series motors must be lubricated daily to ensure proper functionality.

Operation

1. Once the pump is fully assembled and all connections are securely fastened, insert the pump into the drum or vessel.
2. Turn the motor switch to the "ON" position or open air inlet valve.
3. After use, clean the pump and store vertically.
4. This pump is intended for intermittent operation. Operating conditions such as viscosity and ambient temperature may vary, however, this pump is rated for 20 minutes of use on water at 70°F (21°C).

Maintenance

DISASSEMBLY / CLEANING PROCEDURES

1. In order to clean a majority of the residue from the pump tube, immerse the pump into a 55 Gallon Drum of water. Allow the pump to circulate the water for 3 minutes.
2. For a more thorough cleaning remove the motor from the pump tube by loosening the connection nut (see Figure 2).

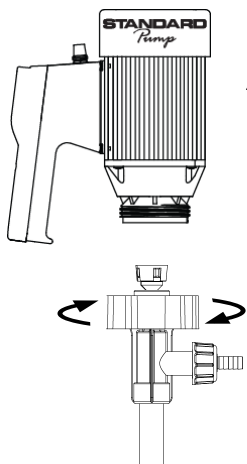


Figure 2

3. Remove the pump foot. (see Figure 3)

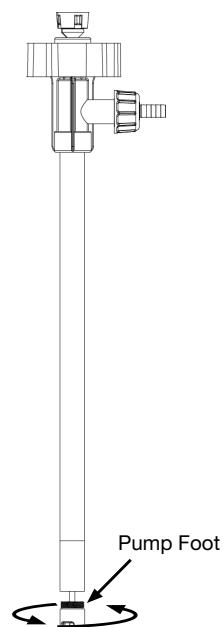


Figure 3

NOTE: Remove pump foot by turning clockwise.

4. While holding the drive shaft with pliers (factory suggests using grip-locks to avoid scarring shaft) remove the impeller by turning counter clockwise (see Figure 4).

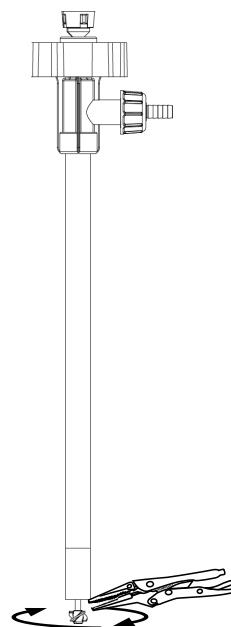


Figure 4

NOTE: Use grip lock pliers to hold shaft while removing impeller.

SP-MPP

5. Remove the Pump Housing (see Figure 5).

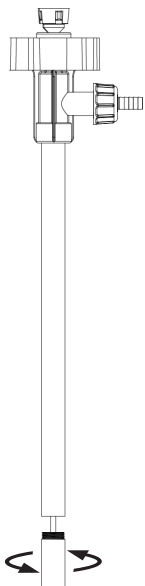


Figure 5

NOTE: Remove pump housing by turning clockwise.

6. Remove outer tube and inner tube from discharge housing by turning clockwise (see Figure 6).

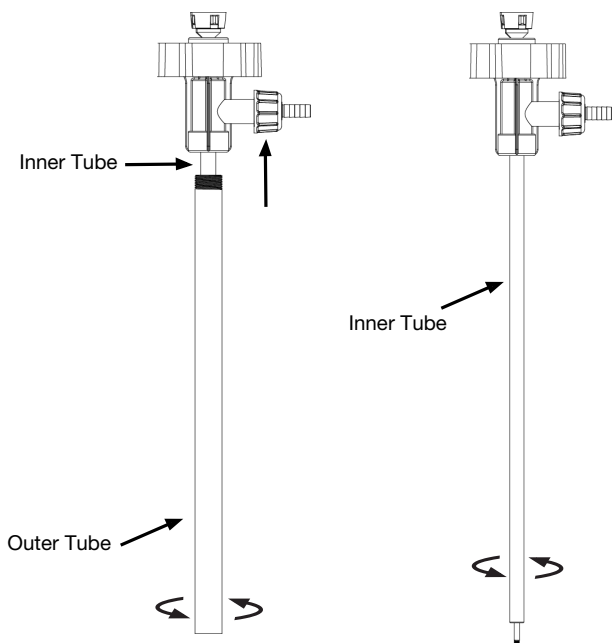


Figure 6

7. Remove pump coupling (P/N: 1004) from drive shaft by turning counterclockwise (see Figure 7). **NOTE:** Use grip-lock pliers to hold shaft while removing coupling.

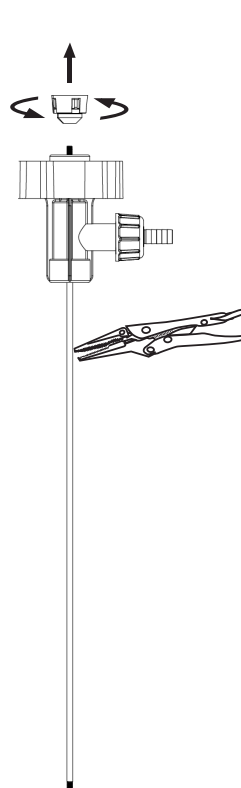


Figure 7

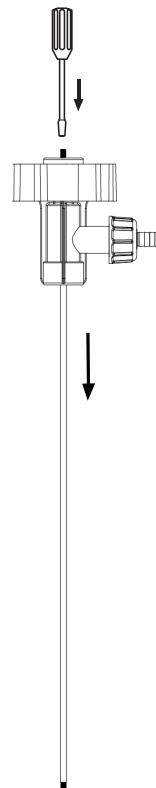


Figure 8

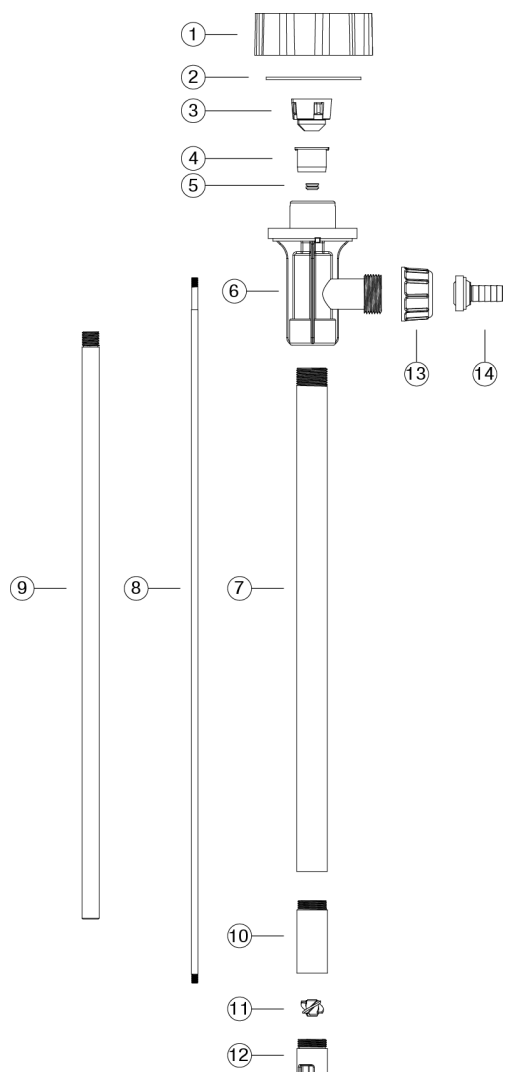
9. Pull drive shaft straight down removing it from the discharge housing or connection flange while inserting a screwdriver through bearing unit (P/N: 1038) (see Figure 8).

NOTE: Ensure screwdriver is maintained inside bearing unit so spacer and seal are stationary and aligned properly for reassembly.

⚠ WARNING *When replacing the drive shaft in the bearing unit (P/N1038) during re-assembly, make sure the drive shaft is inserted through the spacer in between the bearings inside the bearing unit. Failure to do so could cause the bearing unit to prematurely fail.*

SP-MPP

SP-MPP Spare Parts List



Ref. Number	Description	P/N	Qty
1	Connection Nut, PVDF	1742	1
2	Snap Ring, Steel	1508	1
3	Pump Coupling, Nylon	1004	1
4	Bearing Unit	1038	1
5	V Seal, Viton	1000	1
6	Discharge Housing, Polypropylene	1720	1
7	Outer Tube, Polypropylene		1
	20" (500mm)	1701	
	27" (700mm)	1703	
	39" (1000mm)	1705	
8	Drive Shaft, Hastelloy C-276		1
	20" (500mm)	1710	
	27" (700mm)	1711	
	39" (1000mm)	1712	
9	Inner Tube, Polypropylene		1
	20" (500mm)	1700	
	27" (700mm)	1702	
	39" (1000mm)	1704	
10	Pump Housing, Polypropylene	1723	1
11	Rotor, Polypropylene	1724	1
12	Pump Foot, Polypropylene	1725	1
13	Wing Nut, Polypropylene	1721	1
14	Hose Barb, Polypropylene, 1/2" (12,7 mm)	1722	1

WARRANTY

Three year limited warranty

Standard Pump, Inc. warrants, subject to the conditions below, through either Standard Pump, Inc., its subsidiaries, or its authorized distributors, to repair or replace free of charge, including labor, any part of this equipment which fails within **three years** of delivery of the product to the end user. Such failure must have occurred because of defect in material or workmanship and not as a result of operation of the equipment other than in accordance with the instructions given in this material. Specific exceptions include:

- Consumable items such as motor brushes, bearings, couplings and impellers. (Motor brushes typically have a life span of approximately 250 hours. This will vary with the manner in which the motor is used)

Conditions of exceptions include:

- Equipment must be returned by prepaid carriage to Standard Pump, Inc., its subsidiary or authorized distributor.
- All repairs, modifications must have been made by or with express written permission by Standard Pump, Inc., its subsidiary or authorized distributor.
- Equipment which have been abused, misused, or subject to malicious or accidental damage or electrical surge are excluded.

Warranties purporting to be on behalf of Standard Pump, Inc. made by any person, including representatives of Standard Pump, Inc, its subsidiaries, or its distributors, which do not fall within the terms of this warranty shall not be binding upon Standard Pump, Inc. unless expressly approved in writing by a Director or Manager of Standard Pump, Inc. Information for returning pumps Equipment which has been contaminated with, or exposed to, bodily fluids, toxic chemicals or any other substance hazardous to health must be decontaminated before it is returned to Standard Pump, Inc, or its distributor. A returned goods authorization number (RGA #) issued by Standard Pump, Inc., its subsidiary or authorized distributor, must be included with the returned equipment. The RGA # is required if the equipment has been used. If the equipment has been used, the fluids that have been in contact with the pump and the cleaning procedure must be specified along with a statement that the equipment has been decontaminated.

STANDARD PUMP

1610 Satellite Blvd. Suite D., Duluth, Georgia 30097 USA
Toll Free 866-558-8611 • Phone 770-307-1003 • Fax 770-307-1009
info@standardpump.com
www.standardpump.com

STANDARD PUMP EUROPE A/S

Ronnekrogen 2, DK-3400 Hillerød, Denmark
Phone +45 70 23 21 00 • Fax +45 70 23 56 55
info@standard-europe.eu