



Simplex/Duplex Wastewater Disconnect Style Panels

Superior quality simplex and duplex liquid level controllers automatically maintain pump operation. Includes high-level alarm warning for a variety of sump, effluent, sewage and water transfer applications with the ability to disconnect power at panels.

Panel features

- Oversize enclosure to accommodate all options
- One main disconnect through-the-door with door interlock, **prevents the door from accidentally being opened when the disconnect is in the ON position. Pad-lockable in the OFF position only**
- A manual lockable disconnect feature on the motor overload protector. Lock not provided
- Oversize magnetic contactor
- Ambient compensated bi-metallic (Class 10) motor overload circuit protector. Instantaneous magnetic trip for short circuit protection. Single-phase protection for three-phase motor. Field adjustable within the amp. range
- Control transformer with fused primary and fused secondary on all three-phase. Single-phase 115 volt has a fused control circuit
- Through-door hand-off-auto switch, control on/off switch and green pump run light
- Numbered and wired control terminal board
- Layout and schematic CAD diagrams can be provided upon request
- Optional alarm circuit may be field modified to use a 115V AC external power source
- High level alarm

Applications

- Sump
- Sewage
- Effluent
- Water transfer

Specifications – 1Ø and 3Ø

- Accepts single or dual power feed
- Solid state printed circuit control board with float indicator lights
- Main disconnect
- Alternator for duplex version
- Alarm horn
- Auxiliary alarm contacts
- Capacitors for pumps requiring external motor components are not included or available with this panel

Single-phase

- Field adjustable for 115V or 230V, 60Hz
- Adjustable motor overload protectors redundant to built-in overload in single-phase motors

Three-phase

- Field adjustable for 208/230/460/575V, 60Hz
- 115V control circuit transformer
- Adjustable motor overload protectors
- **Heaters not required**

Order numbers

	Phase	NEMA 4X	Amp rating
Simplex	1	CSD14063	4.0-6.3
		CSD16310	6.3-10
		CSD11016	10-16
		CSD11620	16-20
		CSD12025	20-25
		CSD12232	22-32
	3	CSD31625	1.6-2.5
		CSD32540	2.5-4.0
		CSD34063	4.0-6.3
		CSD36310	6.3-10
		CSD31016	10-16
		CSD31620	16-20
		CSD32025	20-25
		CSD32232	22-32
Duplex	1	CDD14063	4.0-6.3
		CDD16310	6.3-10
		CDD11016	10-16
		CDD11620	16-20
		CDD12025	20-25
		CDD12232	22-32
	3	CDD31625	1.6-2.5
		CDD32540	2.5-4.0
		CDD34063	4.0-6.3
		CDD36310	6.3-10
		CDD31016	10-16
		CDD31620	16-20
		CDD32025	20-25
		CDD32232	22-32

NOTE: NEMA 4X panel selections are dead front with an inner door

Nomenclature

Character	Description
1 st	C = Goulds Water Technology
2 nd	S = Simplex, D = Duplex
3 rd	D = Disconnect
4 th	1 = single phase - 115/230 volt 3 = 3 phase - 208/230/460/575 volt
5 th – 8 th	116 = 1.0-1.6 amp range, 1625 = 1.6-2.5 amp range, 2540 = 2.5-4.0 amp range, 4063 = 4.0-6.3 amp range, 6310 = 6.3-10.0 amp range, 1016 = 10-16 amp range, 1620 = 16-20 amp range, 2025 = 20-25 amp range, 2232 = 22-32 amp range (amp ratings of 22-25 overlap on the last two ratings, when in doubt go to larger range)

Additional options

Code (add as required)

- A = Guaranteed pump submergence circuit
- C = 115V condensation heater
- D = Single phase lightning arrester
- E = Three-phase lightning arrester
- F = Elapsed time meter (1) – simplex
- H = Seal fail circuit (1) – simplex
- K = Cycle counter – simplex
- M = High temp. indicator with shutdown – simplex
- O = Special simplex seal fail and high temperature circuit for use on only three-phase 15/20GD, 15/20GX, 1GA/2GA, GV Plus and Impact pumps. For single phase, see Goulds Water Technology single phase grinder control panels bulletin BCP1PGP for standard, BCP1PC1P for explosion proof.
- R = Simplex 3SDX/4SDX/4NS/4XD Seal Fail
- Y = Simplex dry contact for seal failure interface to building management system.
- Z = Simplex dry contact for pump running interface to building management system.

When ordering options, add the appropriate code number as a suffix to the panel order number.

Example: S10020CF adds a cond. heater and (1) elapsed time meter.

Additional options

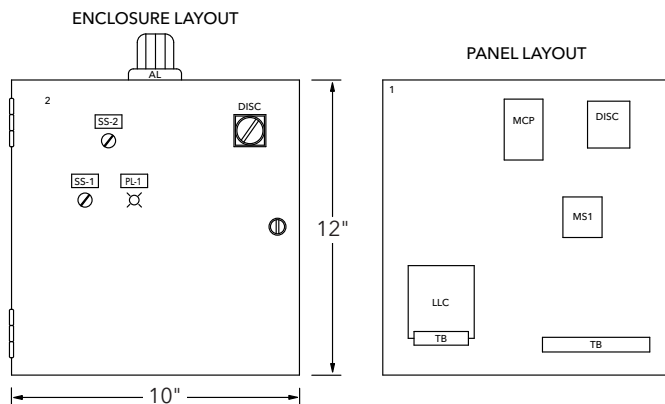
Code (add as required)

- A = Guaranteed pump submergence circuit
- C = 115V condensation heater
- D = Single phase lightning arrester
- E = Three-phase lightning arrester
- G = Elapsed time meter (2) – duplex
- J = Seal fail circuit (2) – duplex
- L = Cycle counter (2) – duplex
- N = High temp. indicator with pump shutdown – duplex
- P = Special duplex Mini CAS seal fail and high temperature circuit for use on only three phase 15/20GD, 15/20GX, 1GA/2GA, GV Plus and Impact pumps. For single phase, see Goulds single phase grinder control panels bulletin BCP1PGP for standard, BCP1PC1P for explosion proof.
- T = 4 intrinsically safe relays in duplex panel
- V = Duplex 3SDX/4SDX/4NS/4XD Seal Fail
- YY= Duplex dry contact for seal failure interface to building management system.
- ZZ= Duplex dry contact for pump running interface to building management system.

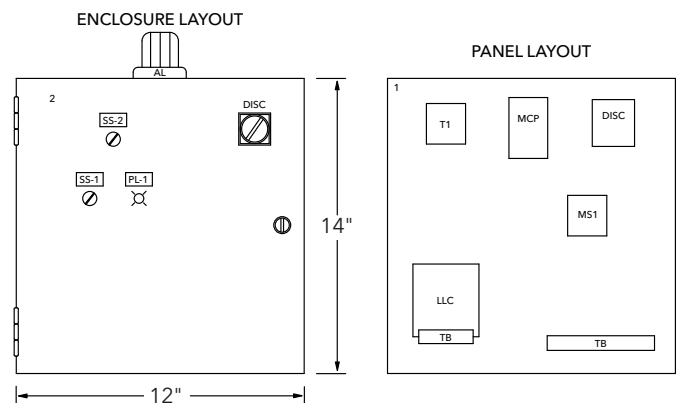
When ordering options, add the appropriate code number as a suffix to the panel order number.

Example...D31625CG adds a condensation heater and (2) elapsed time meters.

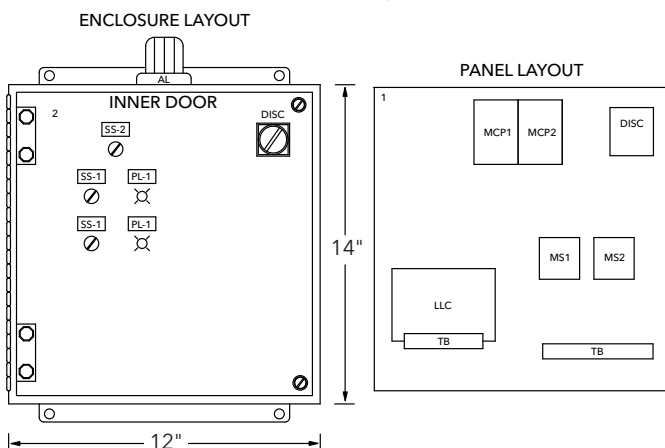
Simplex 1Ø enclosure layout



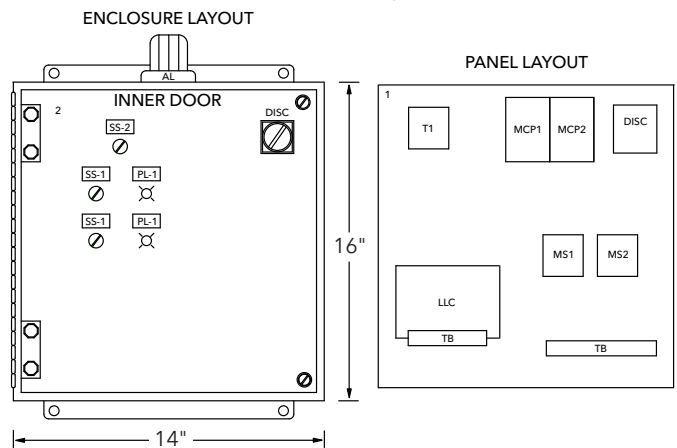
Simplex 3Ø enclosure layout



Duplex 1Ø enclosure layout

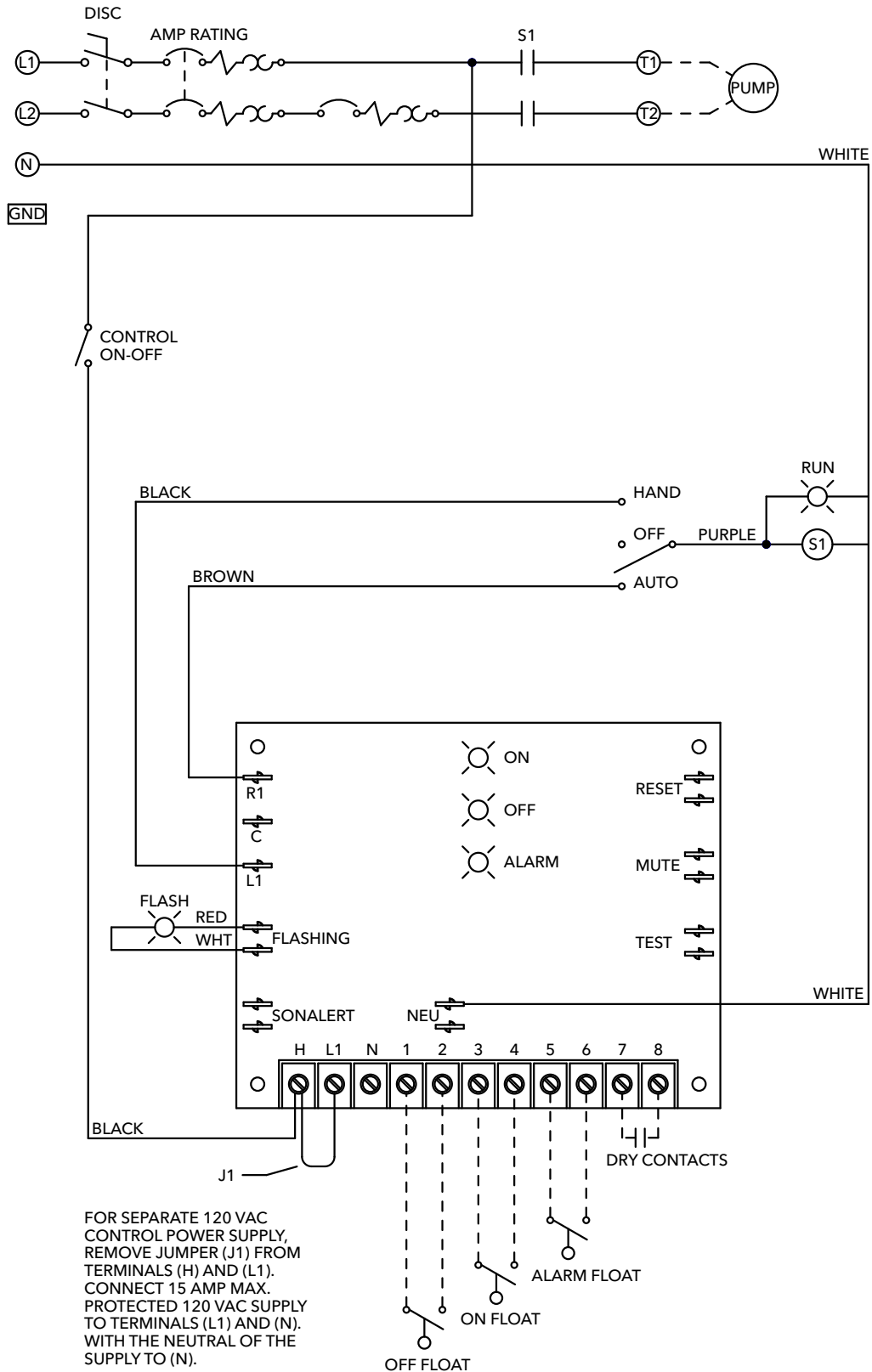


Duplex 3Ø enclosure layout



Simplex panel installation – single phase

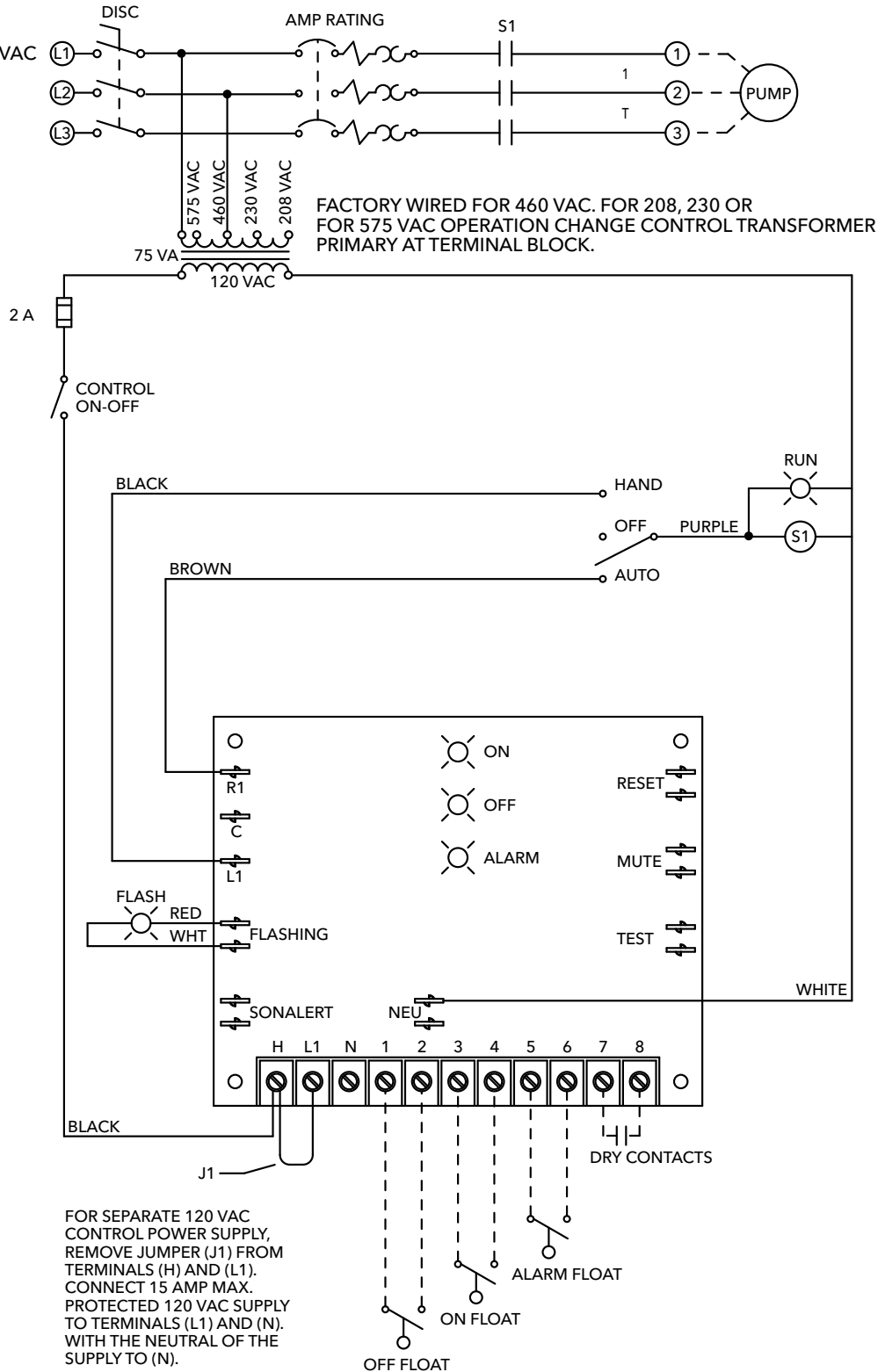
115/230 VAC (FOR 115 VAC, USE TERMINALS L1 AND N, JUMP L2 AND N.)
 SINGLE PHASE 60 HZ



Simplex panel installation – three-phase

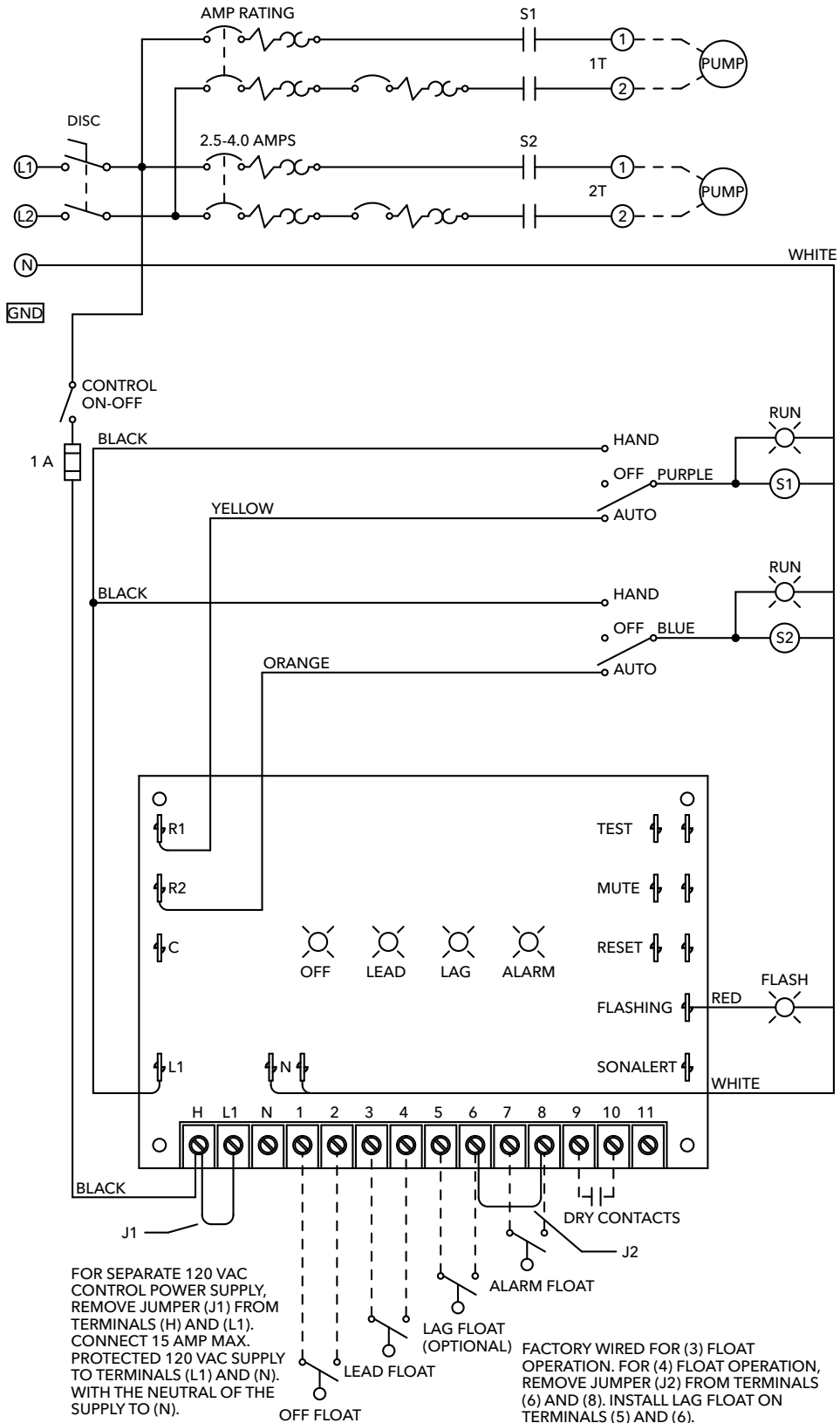
PROVIDE DISCONNECT
PER NEC CODE

208/230/460/575 VAC
3 PHASE
60 HZ



Duplex panel installation – single phase

115/230 VAC (FOR 115 VAC, USE TERMINALS L1 AND N, JUMP L2 AND N.)
SINGLE PHASE 60 HZ

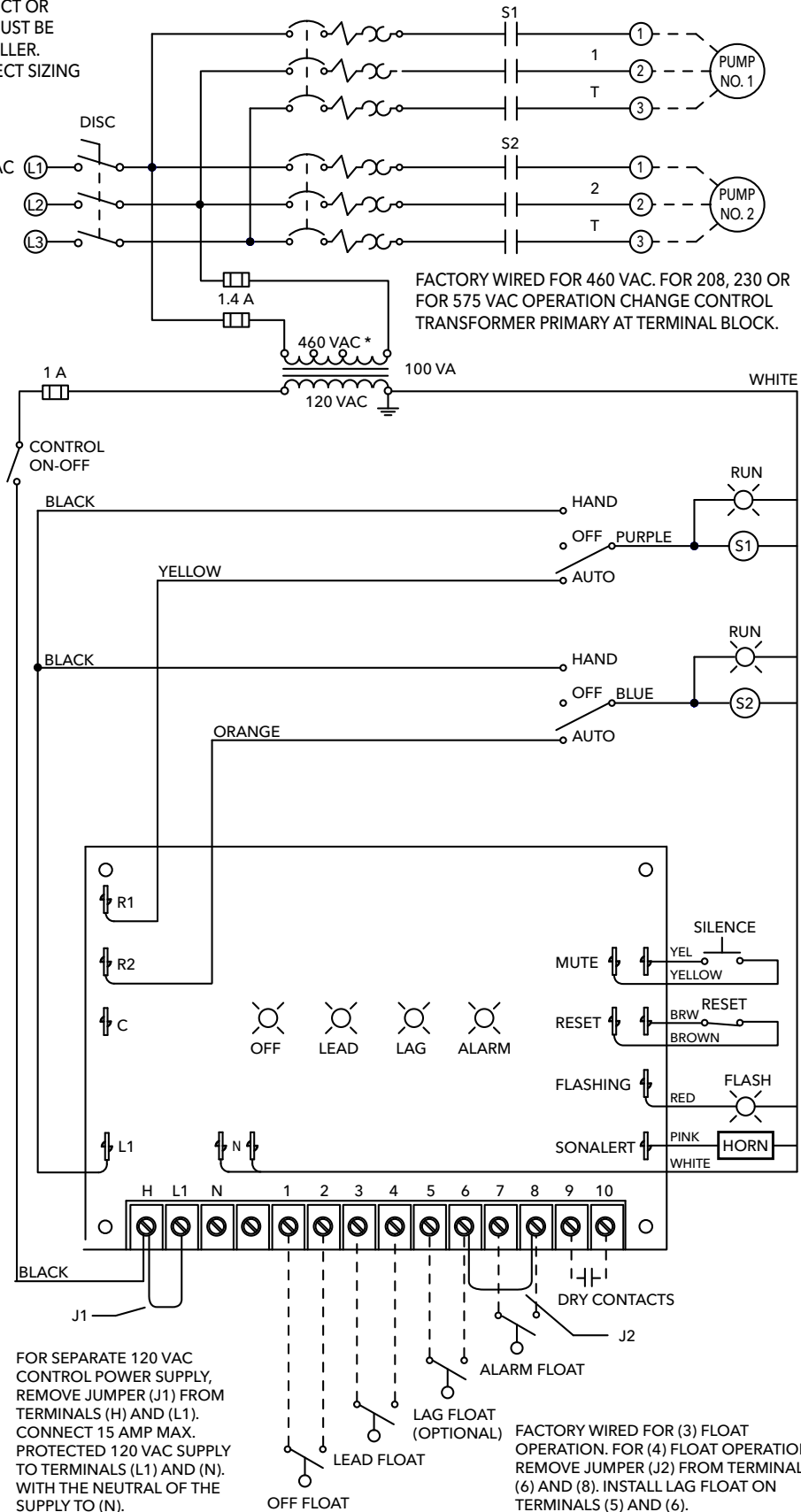


FOR USE WITH WIDE ANGLE FLOAT SWITCH (ONE FLOAT FOR BOTH ON AND OFF OPERATION). JUMP TERMINALS (3) AND (4), INSTALL WIDE ANGLE FLOAT TO TERMINALS (1) AND (2).

Duplex panel installation – three-phase

A FUSED DISCONNECT OR CIRCUIT BREAKER MUST BE PROVIDED BY INSTALLER. PROVIDE DISCONNECT SIZING PER NEC 430-53(C).

208/230/460/575 VAC
3 PHASE
60 HZ



Xylem Inc. Phone: (866) 325-4210
2881 East Bayard Street Ext., Fax: (888) 322-5877
Suite A www.xylem.com/goulds
Seneca Falls, NY 13148

This information is subject to change without notice. All information presented herein is believed reliable and in accordance with accepted engineering practices. Xylem makes no warranties as to the completeness of this information. Users are responsible for evaluating individual product suitability for specific applications. Xylem assumes no liability whatsoever for any special, indirect or consequential damages arising from the sale, resale or misuse of its products.

© 2025 Xylem is a registered trademark of Xylem Inc. or one of its subsidiaries. Goulds Water Technology is a registered trademark of ITT Manufacturing Enterprises LLC and is used under license. All other trademarks or registered trademarks are the property of their respective owners.