

PROJECT:	_____	UNIT TAG:	_____	QUANTITY:	_____
REPRESENTATIVE:	_____	TYPE OF SERVICE:	_____	DATE:	_____
ENGINEER:	_____	SUBMITTED BY:	_____	DATE:	_____
CONTRACTOR:	_____	APPROVED BY:	_____	DATE:	_____
		ORDER NO.:	_____	DATE:	_____

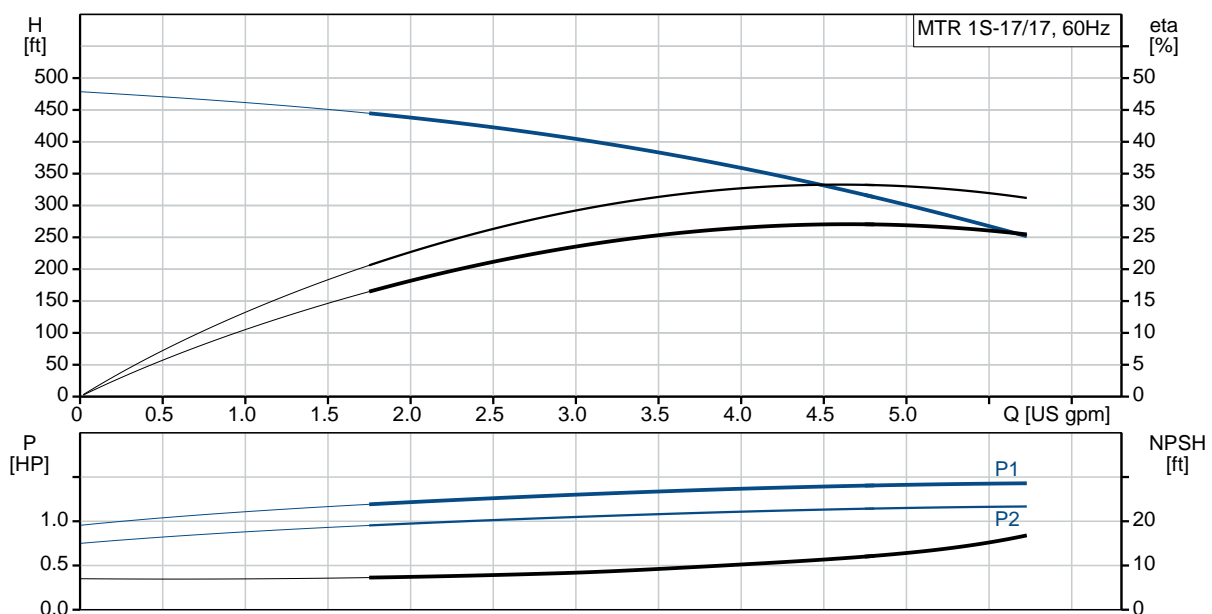
### MTR 1S-17/17 A-WB-A-HUUV

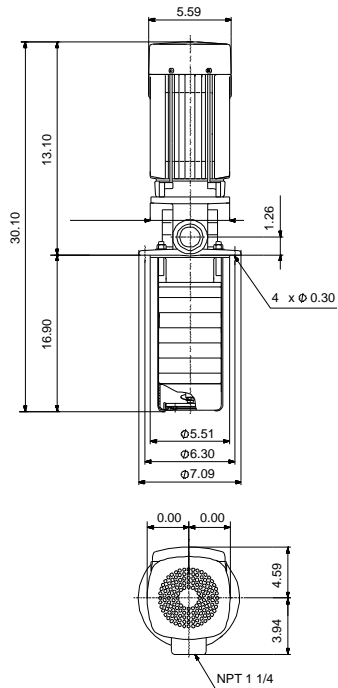
Coolant and condensate pumps



Product photo could vary from the actual product

Conditions of Service	Pump Data	Motor Data
Flow: _____	Max pressure at stated temperature: 363 psi / 194 °F	Rated power - P2: 1.5 HP
Head: _____	Liquid temperature range: 14 .. 194 °F	Rated voltage: 208-230YY/460Y V
Efficiency: _____	Maximum ambient temperature: 140 °F	Main frequency: 60 Hz
Liquid: Water	Shaft seal: HUUV	Enclosure class: 55 Dust/Jetting
Temperature: 68 °F	Product number: 96515366	Insulation class: F
NPSH required: ft		Motor protection: NONE
Viscosity: _____		Motor type: 80CA
Specific Gravity: 1.000		Motor_efficiency: 84.9 %






**Materials:**

Impeller: Stainless steel  
AISI 304  
EN 1.4301

Material code: A

Count	Description
1	<p><b>MTR 1S-17/17 A-WB-A-HUUV</b></p>  <p>Product No.: <a href="#">96515366</a></p> <p>Multistage, immersible, self-priming, centrifugal pump for vertical installation in tanks etc. The pump head and base are in cast iron – all other wetted parts are in stainless steel. The pump has the following characteristics:</p> <ul style="list-style-type: none"> <li>• Dimensions according to DIN 5440.</li> <li>• Impellers, intermediate chambers and spline shaft are made of Stainless steel.</li> <li>• Mechanical shaft seal according to EN 12756.</li> <li>• Power transmission via sintered metal split coupling.</li> </ul> <p>A cartridge shaft seal ensures high reliability, safe handling, and easy access and service. The pump is fitted with a 3-phase, fan-cooled asynchronous motor.</p> <p>Immersion depth: 16.9 in</p> <p><b>Controls:</b> Frequency converter: NONE</p> <p><b>Liquid:</b> Pumped liquid: Water Liquid temperature range: 14 .. 194 °F Selected liquid temperature: 68 °F Density: 62.29 lb/ft<sup>3</sup></p> <p><b>Technical:</b> Rated pump speed: 3466 rpm Rated flow: 4.84 US gpm Rated head: 319.9 ft Chambers: 17 Drainage back to tank: N Pump orientation: Vertical Code for shaft seal: HUUV Curve tolerance: ISO9906:2012 3B</p> <p><b>Materials:</b> Pump head: Cast iron EN 1561 EN-GJL-200 ASTM A48-25B</p>



Company name:

Created by:

Phone:

Date:

8/25/2020

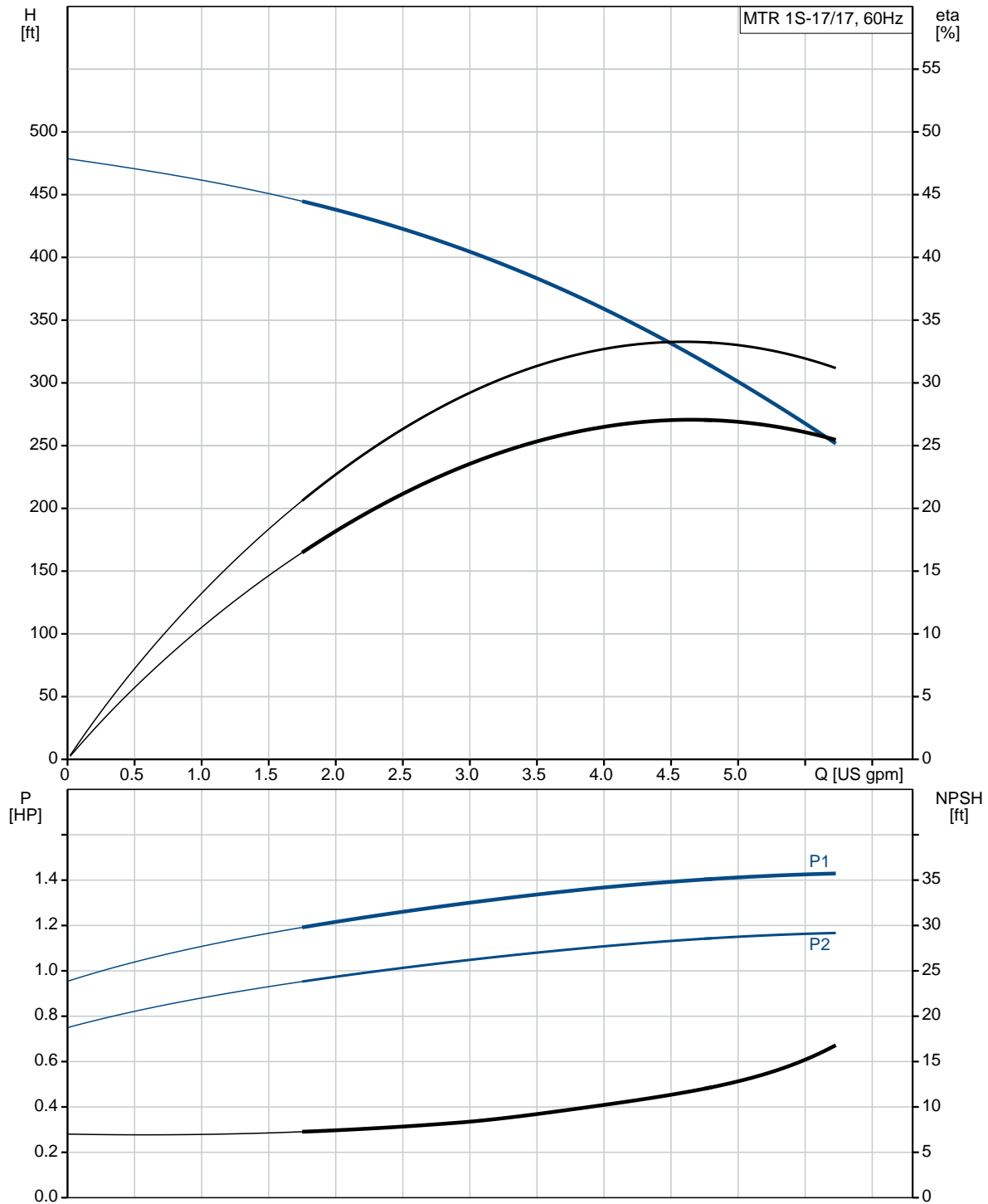
Count	Description
	<p>Impeller: Stainless steel EN 1.4301 AISI 304</p> <p><b>Installation:</b> Maximum ambient temperature: 140 °F Maximum operating pressure: 362.59 psi Max pressure at stated temperature: 363 psi / 194 °F Type of connection: NPT(F) Size of outlet port: 1 1/4 inch Immersion depth: 16.9 in Flange size for motor: 56C</p> <p><b>Electrical data:</b> Motor standard: NEMA Motor type: 80CA IE Efficiency class: NEMA Premium / IE3 60Hz Rated power - P2: 1.5 HP Main frequency: 60 Hz Suitable for 50/60 Hz: N Rated voltage: 3 x 208-230YY/460Y V Service factor: 1.15 Rated current: 4,45-4,3/2,16 A Starting current: 720 % Cos phi - power factor: 0.84-0.78 Rated speed: 3440-3480 rpm IE efficiency: IE3 84,1% Motor efficiency at full load: 84.9 % Motor efficiency at 3/4 load: 81.0 % Motor efficiency at 1/2 load: 78.5 % Number of poles: 2 Enclosure class (IEC 34-5): 55 Dust/Jetting Insulation class (IEC 85): F Motor Number: 98976607</p> <p><b>Others:</b> Terminal box position: 6 Minimum efficiency index, MEI <math>\eta_{\text{MEI}}</math>: 0.67 Net weight: 33.8 lb Gross weight: 40.8 lb Shipping volume: 4.94 ft<sup>3</sup> Country of origin: GB Custom tariff no.: 8413.70.2040</p>



Company name:  
Created by:  
Phone:

Date: 8/25/2020

## 96515366 MTR 1S-17/17 A-WB-A-HUUV 60 Hz





Company name:

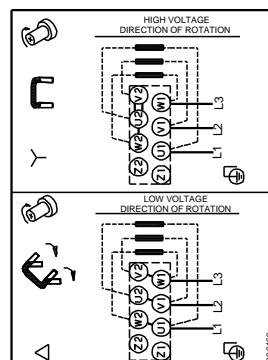
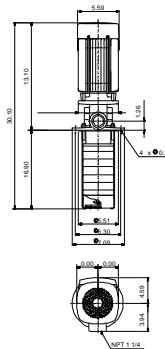
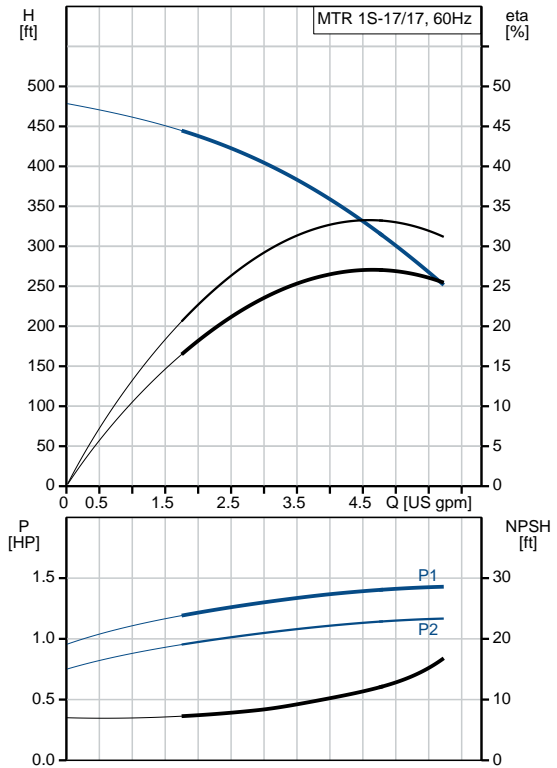
Created by:

Phone:

Date:

8/25/2020

Description	Value
<b>General information:</b>	
Product name:	MTR 1S-17/17 A-WB-A-HUUV
Product No.:	96515366
EAN:	5700396720975 5700396720975
<b>Technical:</b>	
Rated pump speed:	3466 rpm
Rated flow:	4.84 US gpm
Rated head:	319.9 ft
Chambers:	17
Impellers:	17
Number of reduced-diameter impellers:	0
Drainage back to tank:	N
Pump orientation:	Vertical
Code for shaft seal:	HUUV
Curve tolerance:	ISO9906:2012 3B
Pump version:	A
Model:	A
<b>Materials:</b>	
Pump head:	Cast iron EN 1561 EN-GJL-200 ASTM A48-25B
Impeller:	Stainless steel EN 1.4301 AISI 304
Material code:	A
<b>Installation:</b>	
Maximum ambient temperature:	140 °F
Maximum operating pressure:	362.59 psi
Max pressure at stated temperature:	363 psi / 194 °F
Type of connection:	NPT(F)
Size of outlet port:	1 1/4 inch
Immersion depth:	16.9 in
Flange size for motor:	56C
Connect code:	WB
<b>Liquid:</b>	
Pumped liquid:	Water
Liquid temperature range:	14 .. 194 °F
Selected liquid temperature:	68 °F
Density:	62.29 lb/ft³
<b>Electrical data:</b>	
Motor standard:	NEMA
Motor type:	80CA
IE Efficiency class:	NEMA Premium / IE3 60Hz
Rated power - P2:	1.5 HP





Company name:

Created by:

Phone:

Date:

8/25/2020

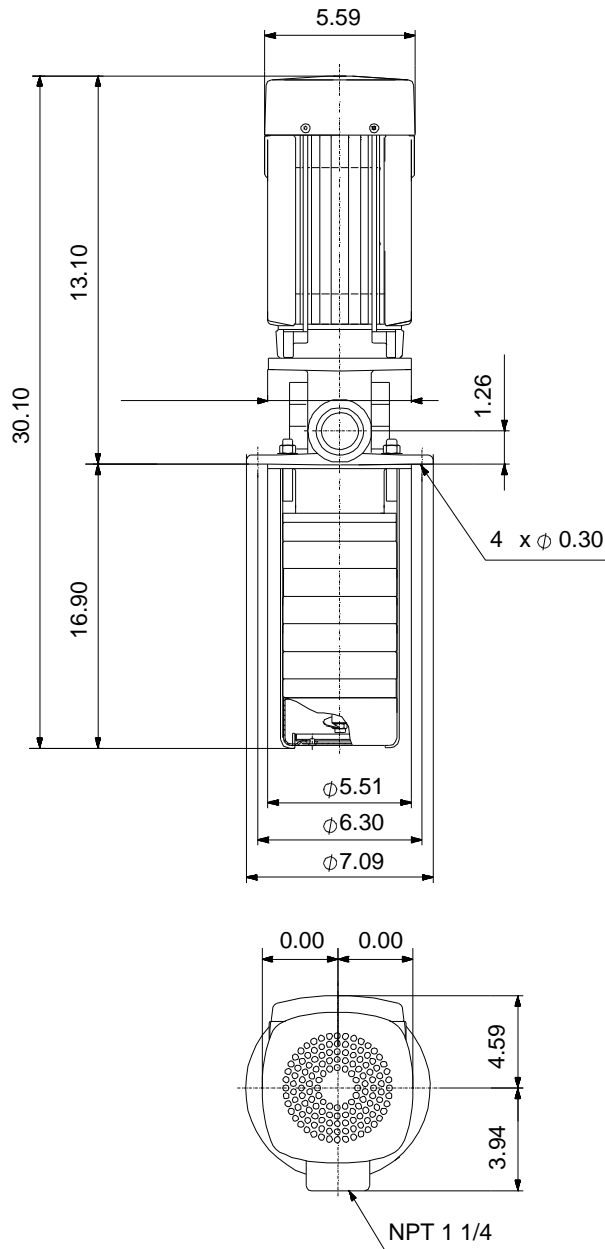
Description	Value
Main frequency:	60 Hz
Suitable for 50/60 Hz:	N
Rated voltage:	3 x 208-230YY/460Y V
Service factor:	1.15
Rated current:	4,45-4,3/2,16 A
Starting current:	720 %
Cos phi - power factor:	0.84-0.78
Rated speed:	3440-3480 rpm
IE efficiency:	IE3 84,1%
Motor efficiency at full load:	84.9 %
Motor efficiency at 3/4 load:	81.0 %
Motor efficiency at 1/2 load:	78.5 %
Number of poles:	2
Enclosure class (IEC 34-5):	55 Dust/Jetting
Insulation class (IEC 85):	F
Motor protection:	NONE
Motor Number:	98976607
<b>Controls:</b>	
Frequency converter:	NONE
<b>Others:</b>	
Terminal box position:	6
Minimum efficiency index, MEI â‰¥%:	0.67
Net weight:	33.8 lb
Gross weight:	40.8 lb
Shipping volume:	4.94 ft³
Sales region:	Namreg
Country of origin:	GB
Custom tariff no.:	8413.70.2040



Company name:  
Created by:  
Phone:

Date: 8/25/2020

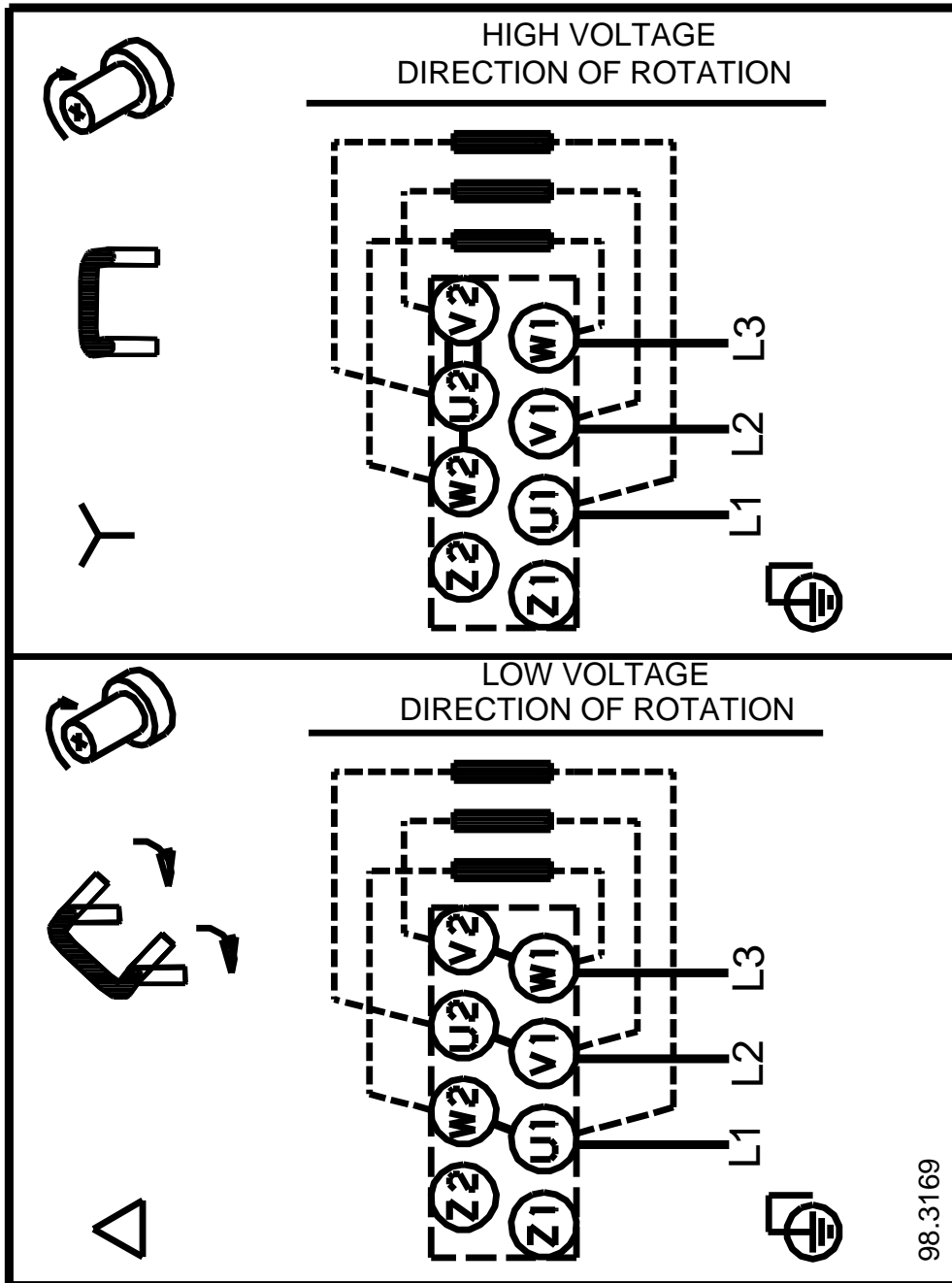
## 96515366 MTR 1S-17/17 A-WB-A-HUUV 60 Hz



Note! All units are in [in] unless otherwise stated.  
Disclaimer: This simplified dimensional drawing does not show all details.



## 96515366 MTR 1S-17/17 A-WB-A-HUUV 60 Hz



All units are [in] unless otherwise presented.