



PRICE PUMP®

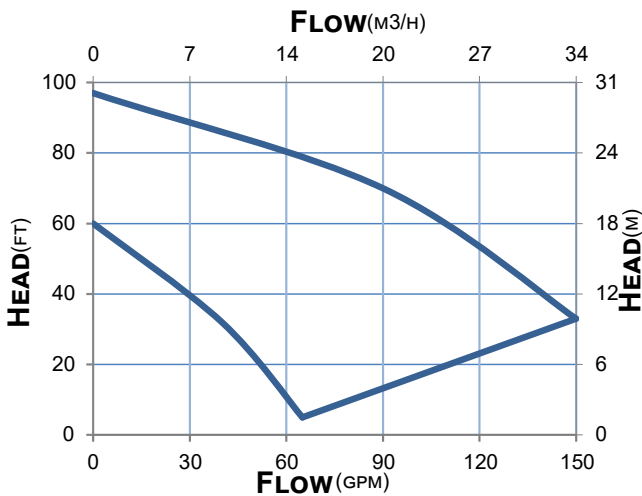
SP150

PUMP VOLUTE / IMPELLER MATERIALS

- SP150 (AI) – CAST IRON / CAST IRON
- SP150 (SF) – CAST IRON / 316SS
- SP150 (SS) – 316SS / 316SS

APPLICATIONS

- CHEMICAL SUMP PUMPS
- GROUND WATER REMEDIATION
- WASTE WATER TREATMENT
- PUMPING SOLVENTS
- DEIONIZED WATER
- CHEMICAL PROCESS
- AGRICULTURAL CHEMICALS
- DEWATERING



STANDARD SPECIFICATIONS

- SP150 DISCHARGE 1-1/2" FNPT, SUCTION 1-1/2" FNPT
- MAXIMUM IMPELLER DIAMETER: 4.75"
- MAXIMUM IMPELLER VANE HEIGHT: 0.50"
- STUB SHAFT: 5/8" 316SS
- MOTOR: NEMA C FACE (MULTIPLE ENCLOSURES AVAILABLE)

MECHANICAL SEAL TYPES

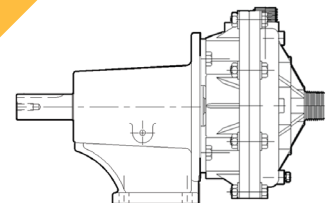
- SINGLE, 3/4" TYPE 21 BUNA, CARBON VS. CERAMIC (AI, SF)
- SINGLE, 3/4" TYPE 21 VITON, CARBON VS. CERAMIC (SS)
- NOTE: ADDITIONAL SEAL OPTIONS AVAILABLE
- GASKET: SYN. FIBER (AI, SF) AND PTFE (SS)

FEATURES

- PUMP DESIGN – COMPACT, CLOSE COUPLED
- TEFLON SEAL – TYPE 9 AVAILABLE
- FLUSH OPTIONS – RECIRCULATING

OPTIONAL CONFIGURATIONS

- AIR MOTOR: UP TO 4 HP
- POWER FRAME MOUNTING
- LONG-COUPLED MOUNTING



2203 SMEED PARKWAY CALDWELL, ID 83605

MAIN (208) 402-6871

TOLL FREE (800) 345-7867

EMAIL SALES@PRICEPUMP.COM

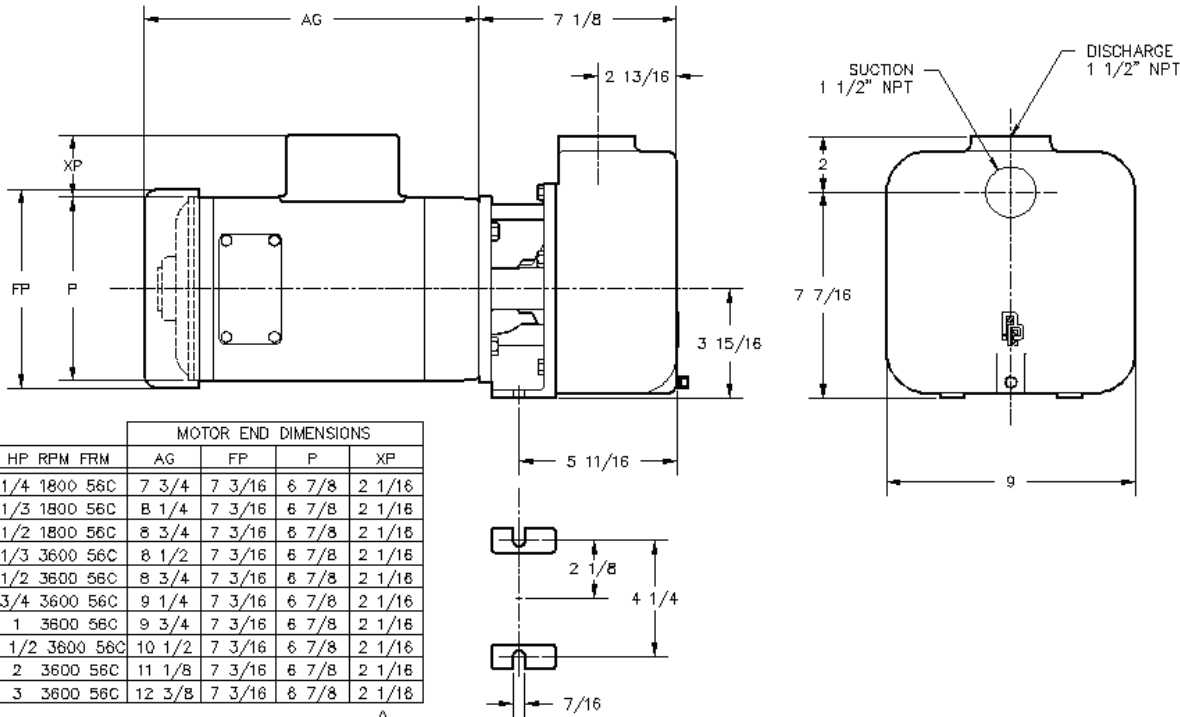
PRICEPUMP.COM





PRICE PUMP

SP150



MOTOR END DIMENSIONS

HP	RPM	FRM	AG	FP	P	XP
1/4	1800	56C	7 3/4	7 3/16	6 7/8	2 1/16
1/3	1800	56C	8 1/4	7 3/16	6 7/8	2 1/16
1/2	1800	56C	8 3/4	7 3/16	6 7/8	2 1/16
1/3	3600	56C	8 1/2	7 3/16	6 7/8	2 1/16
1/2	3600	56C	8 3/4	7 3/16	6 7/8	2 1/16
3/4	3600	56C	9 1/4	7 3/16	6 7/8	2 1/16
1	3600	56C	9 3/4	7 3/16	6 7/8	2 1/16
1 1/2	3600	56C	10 1/2	7 3/16	6 7/8	2 1/16
2	3600	56C	11 1/8	7 3/16	6 7/8	2 1/16
3	3600	56C	12 3/8	7 3/16	6 7/8	2 1/16

NOTE:

- MOTOR DIMENSIONS WILL VARY BY MODEL AND MAKE, DIMENSIONS ARE TO BE USED FOR REFERENCE ONLY.
- ALL DIMENSIONS ARE ROUNDED TO THE NEAREST 1/8 INCH.
- DIMENSION "XP" APPLIES TO SINGLE PHASE MOTORS ONLY.

DIMENSIONS

TECHNICAL INFORMATION

MAX FLOW	150 GPM (27 M3/HR)						
MAX HEAD	97 FEET (46 M)						
MIN. FLOW	10 GPM (2.3 M3/HR)						
MAX SOLID SIZE	0.060" (1.5 MM)						
MAX WORKING PRESSURE	<table border="0"> <tr> <td>(TYPE 8 SEAL)</td> <td>325 PSI (22.4 BAR)</td> </tr> <tr> <td>(TYPE 9 SEAL)</td> <td>350 PSI (24.1 BAR)</td> </tr> <tr> <td>(TYPE 21 SEAL)</td> <td>150 PSI (10.3 BAR)</td> </tr> </table>	(TYPE 8 SEAL)	325 PSI (22.4 BAR)	(TYPE 9 SEAL)	350 PSI (24.1 BAR)	(TYPE 21 SEAL)	150 PSI (10.3 BAR)
(TYPE 8 SEAL)	325 PSI (22.4 BAR)						
(TYPE 9 SEAL)	350 PSI (24.1 BAR)						
(TYPE 21 SEAL)	150 PSI (10.3 BAR)						
MAX TEMP.	300°F (149°C)*						

* TEMPERATURE LIMITS ARE BASED ON STANDARD SEAL AND GASKET MATERIALS, AND WILL VARY ACCORDING TO THE LIQUID BEING PUMPED.

MATERIALS OF CONSTRUCTION

	SP150	AI	SF	SS
VOLUTE / DIFFUSER	CAST IRON	CAST IRON	CAST IRON	316SS
IMPELLER	CAST IRON	316SS	316SS	316SS
BRACKET	CAST IRON	CAST IRON	CAST IRON	316SS
GASKETS	SYN. FIBER	SYN. FIBER	SYN. FIBER	TEFLON
FASTENERS	316SS	316SS	316SS	316SS

PRIMING TIMES (MINUTES: SECONDS)

IMPELLER SIZE	5 FT.	10 FT.	15 FT.	20 FT.
4.25/.07	1:30	3:45	6:30	12:25
4.63/.12	1:00	2:25	5:25	10:00
4.75/.25	0:38	1:15	2:48	6:15
4.75/.50	0:20	0:35	1:05	2:25

NOTES: FOR ALL OTHER IMPELLER SIZES, INTERPOLATE TO ACHIEVE APPROXIMATE TIMES.



2203 SMEED PARKWAY CALDWELL, ID 83605

MAIN
(208) 402-6871

TOLL FREE
(800) 345-7867

EMAIL
SALES@PRICEPUMP.COM

PRICEPUMP.COM

