

|                 |       |                  |       |           |       |
|-----------------|-------|------------------|-------|-----------|-------|
| PROJECT:        | _____ | UNIT TAG:        | _____ | QUANTITY: | _____ |
| REPRESENTATIVE: | _____ | TYPE OF SERVICE: | _____ | DATE:     | _____ |
| ENGINEER:       | _____ | SUBMITTED BY:    | _____ | DATE:     | _____ |
| CONTRACTOR:     | _____ | APPROVED BY:     | _____ | DATE:     | _____ |
|                 |       | ORDER NO.:       | _____ | DATE:     | _____ |

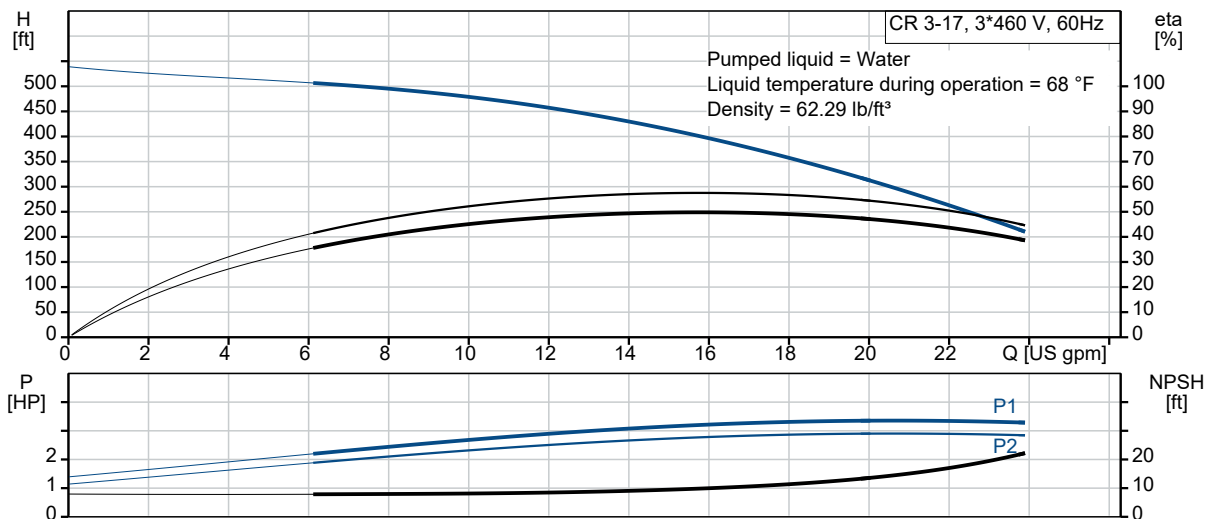


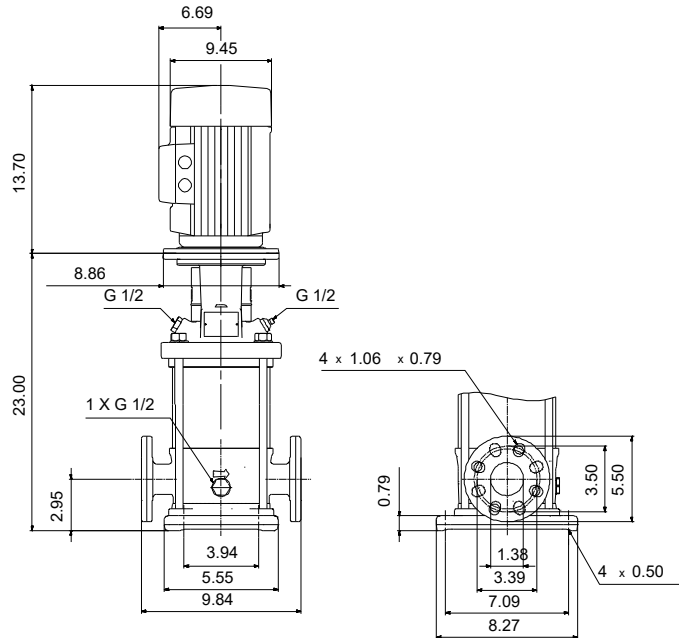
Product photo could vary from the actual product

### CR 3-17 A-FGJ-A-V-HQQV

Vertical, multistage centrifugal pump with suction and discharge ports on the same level. The pump head and base are in cast iron. All other wetted parts are in stainless steel (EN 1.4301)(AISI 304)


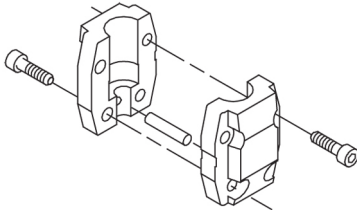
| Conditions of Service   | Pump Data  | Motor Data                   |
|-------------------------|--|------------------------------|
| Efficiency: _____       | Max pressure at stated temperature: 363 psi / 194 °F | Rated power - P2: 3 HP       |
| Liquid: Water           | Liquid temperature range: -4 .. 194 °F               | Rated voltage: 208-230/460 V |
| Temperature: 68 °F      | Maximum ambient temperature: 104 °F                  | Main frequency: 60 Hz        |
| NPSH required: ft       | Approvals: CURUS                                     | Enclosure class: IP55        |
| Specific Gravity: 1.000 | Shaft seal: HQQV                                     | Insulation class: F          |
|                         | Product number: 99916370                             | Motor protection: NONE       |
|                         |  | Motor type: WEG              |
|                         |  | Eff. 1/1: 86.5 %             |





**Materials:**

Base: Cast iron  
 Base: EN 1561 EN-GJL-200  
 Base: ASTM A48-25B  
 Impeller: Stainless steel  
 Impeller: AISI 304  
 Impeller: EN 1.4301  
 Material code: A  
 Code for rubber: V

| Count | Description   |
|-------|---|
| 1     | <p><b>CR 3-17 A-FGJ-A-V-HQQV</b></p>  <p>Product No.: <a href="#">99916370</a></p> <p>Vertical, multistage centrifugal pump with inlet and outlet ports on same the level (inline). The pump head and base are in cast iron – all other wetted parts are in stainless steel. A cartridge shaft seal ensures high reliability, safe handling, and easy access and service. Power transmission is via a rigid split coupling. Pipe connection is via combined DIN-ANSI-JIS flanges.</p> <p>The pump is fitted with a 3-phase, fan-cooled asynchronous motor.</p> <p><b>Further product details</b></p> <p>Steel, cast iron and aluminium components have an epoxy-based coating made in a cathodic electro-deposition (CED) process.</p> <p>CED is a high-quality dip-painting process where an electrical field around the products ensures deposition of paint particles as a thin, well-controlled layer on the surface.</p> <p>An integral part of the process is a pretreatment.</p> <p>The entire process consists of these elements:</p> <ol style="list-style-type: none"> <li>1) Alkaline-based cleaning.</li> <li>2) Zinc phosphating.</li> <li>3) Cathodic electro-deposition.</li> <li>4) Curing to a dry film thickness 18-22 my m.</li> </ol> <p>The colour code for the finished product is NCS 9000/RAL 9005.</p> <p><b>Pump</b></p> <p>A standard split coupling connects the pump and motor shaft. It is enclosed in the pump head/motor stool by means of two coupling guards.</p>  <p>The pump head, pump head cover and flange for motor mounting is made in one piece. The pump head has a combined 1/2" priming plug and vent screw.</p> |



The pump is fitted with a balanced O-ring seal unit with a rigid torque-transmission system.

This seal type is assembled in a cartridge unit which makes replacement safe and easy.

Due to the balancing, this seal type is suitable for high-pressure applications.

The cartridge construction also protects the pump shaft from possible wear from a dynamic O-ring between pump shaft and shaft seal.

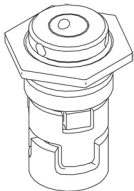
Primary seal:

- Rotating seal ring material: silicon carbide (SiC)
- Stationary seat material: silicon carbide (SiC)

This material pairing is used where higher corrosion resistance is required. The high hardness of this material pairing offers good resistance against abrasive particles.

Secondary seal material: FKM (fluorocarbon rubber)

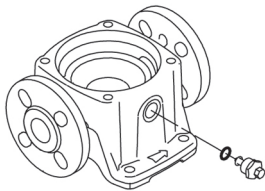
FKM has excellent resistance to oils and chemicals. Above 90 °C, FKM should only be used in media without water.



The shaft seal is screwed into the pump head.

The chambers and impellers are made of stainless-steel sheet. The chambers are provided with a PTFE neck ring offering improved sealing and high efficiency. The impellers have smooth surfaces, and the shape of the blades ensure a high efficiency.

The base is made of cast iron. The flanges and base are cast in one piece. The outlet side of the base has a combined drain plug and bypass valve. The pump is secured to the foundation by four bolts through the base plate.



## Motor

The motor is a totally enclosed, fan-cooled motor with principal dimensions to IEC and DIN standards. The motor is flange-mounted with tapped-hole flange (FT).

Motor-mounting designation in accordance with IEC 60034-7: IM B 14 (Code I) / IM 3601 (Code II).

Electrical tolerances comply with IEC 60034.



Company name:

Created by:

Phone:

Date:

3/22/2021

| Count | Description  |
|-------|--|
|       | <p>The motor efficiency is classified as premium efficiency in accordance with EISA2007.</p> <p>The motor does not incorporate motor protection and must be connected to a motor-protective circuit breaker which can be manually reset. The motor-protective circuit breaker must be set according to the rated current of the motor (I1/1).</p> <p>The motor can be connected to a variable speed drive for adjustment of pump performance to any duty point. Grundfos CUE offers a range of variable speed drives. Please find more information in Grundfos Product Center.</p> <p><b>Technical data</b></p> <p>Liquid:</p> <p>Pumped liquid: Water</p> <p>Liquid temperature range: -4 .. 194 °F</p> <p>Selected liquid temperature: 68 °F</p> <p>Density: 62.29 lb/ft³</p> <p>Technical:</p> <p>Rated pump speed: 3461 rpm</p> <p>Rated flow: 15.4 US gpm</p> <p>Rated head: 397 ft</p> <p>Pump orientation: Vertical</p> <p>Shaft seal arrangement: Single</p> <p>Code for shaft seal: HQQV</p> <p>Approvals on nameplate: CURUS</p> <p>Curve tolerance: ISO9906:2012 3B</p> <p>Materials:</p> <p>Base: Cast iron<br/>EN 1561 EN-GJL-200<br/>ASTM A48-25B</p> <p>Impeller: Stainless steel<br/>EN 1.4301<br/>AISI 304</p> <p>Bearing: SIC<br/>SIC</p> <p>Installation:</p> <p>Maximum ambient temperature: 104 °F</p> <p>Maximum operating pressure: 362.59 psi</p> <p>Max pressure at stated temperature: 363 psi / 194 °F<br/>363 psi / -4 °F</p> <p>Type of connection: DIN / ANSI / JIS</p> <p>Size of inlet connection: DN 25/32</p> <p>Size of outlet connection: DN 25/32</p> <p>Pressure rating for connection: PN 25</p> <p>Flange rating inlet: 250 lb</p> <p>Flange size for motor: 182TC</p> <p>Electrical data:</p> <p>Motor standard: NEMA</p> |



Company name:

Created by:

Phone:

Date:

3/22/2021

| Count | Description                             |
|-------|---|
|       | Motor type: WEG                         |
|       | IE Efficiency class: IE3 / NEMA Premium |
|       | Rated power - P2: 3 HP                  |
|       | Power (P2) required by pump: 3 HP       |
|       | Main frequency: 60 Hz                   |
|       | Rated voltage: 3 x 208-230/460 V        |
|       | Service factor: 1.15                    |
|       | Rated current: 8,12-7,34/3,67 A         |
|       | Starting current: 880-880 %             |
|       | Cos phi - power factor: 0.87            |
|       | Rated speed: 3515 rpm                   |
|       | IE efficiency: IE3 86,5%                |
|       | Motor efficiency at full load: 86.5 %   |
|       | Motor efficiency at 3/4 load: 86.5 %    |
|       | Motor efficiency at 1/2 load: 84 %      |
|       | Number of poles: 2                      |
|       | Enclosure class (IEC 34-5): IP55        |
|       | Insulation class (IEC 85): F            |
|       | Motor Number: 99883243                  |
|       | Controls:                               |
|       | Frequency converter: NONE               |
|       | Others:                                 |
|       | Net weight: 125 lb                      |
|       | Gross weight: 139 lb                    |
|       | Shipping volume: 8.26 ft³               |
|       | Country of origin: US                   |
|       | Custom tariff no.: 8413.70.2040         |



Company name:

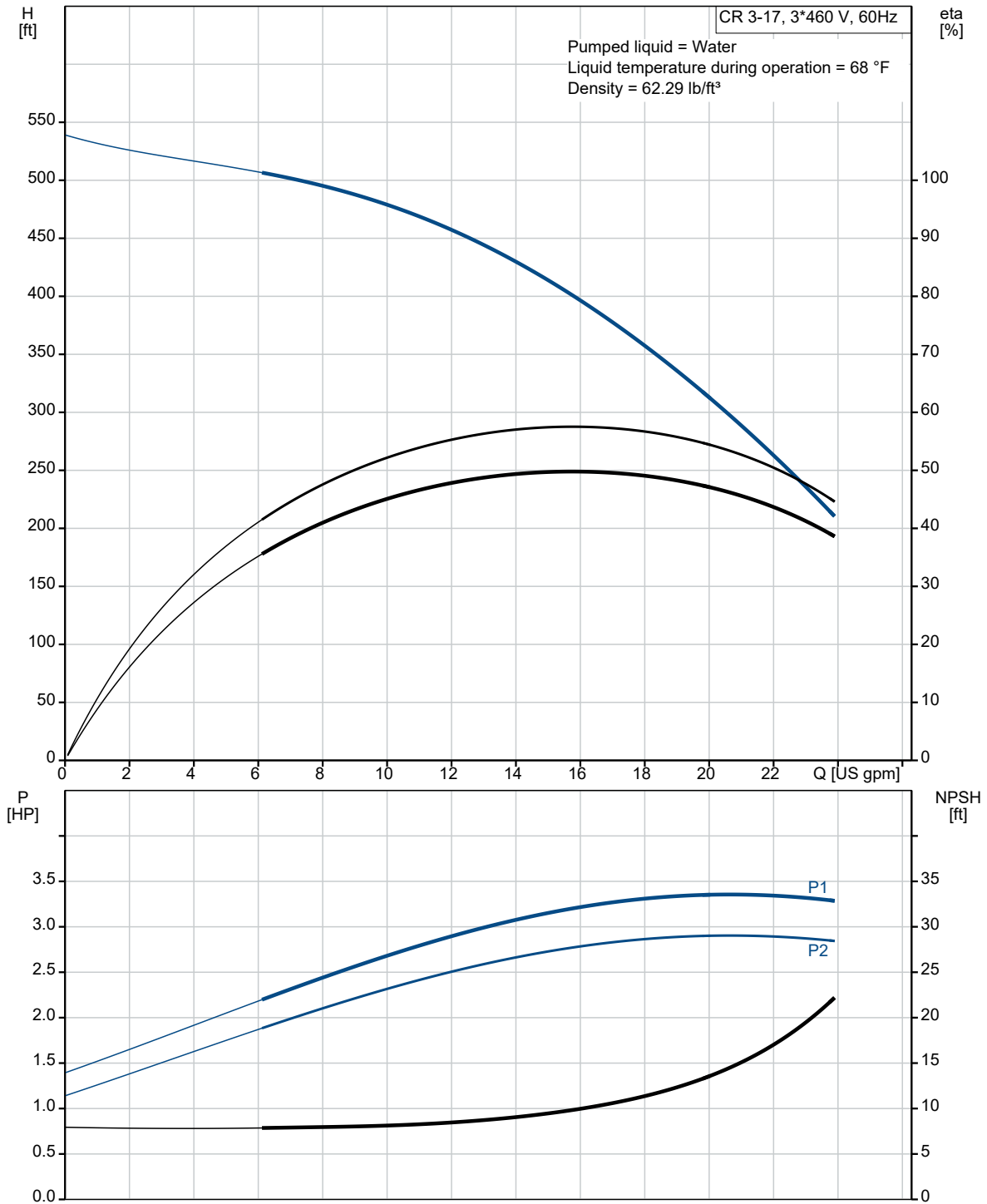
Created by:

Phone:

Date:

3/22/2021

## 99916370 CR 3-17 A-FGJ-A-V-HQQV 60 Hz

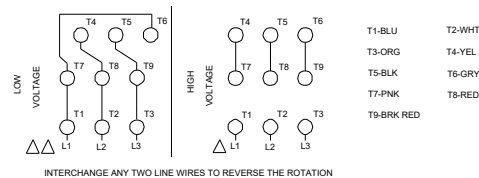
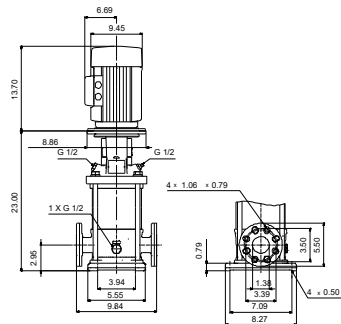
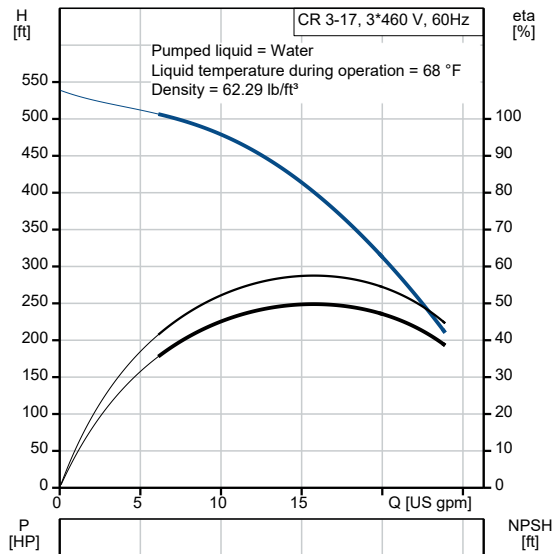




Company name:  
Created by:  
Phone:

Date: 3/22/2021

| Description                           | Value                     |
|---------------------------------------|---------------------------|
| <b>General information:</b>           |                           |
| Product name:                         | CR 3-17<br>A-FGJ-A-V-HQQV |
| Product No.:                          | 99916370                  |
| EAN:                                  | 5715114111195             |
| <b>Technical:</b>                     |                           |
| Rated pump speed:                     | 3461 rpm                  |
| Rated flow:                           | 15.4 US gpm               |
| Rated head:                           | 397 ft                    |
| Maximum head:                         | 533.5 ft                  |
| Stages:                               | 17                        |
| Impellers:                            | 17                        |
| Number of reduced-diameter impellers: | 0                         |
| Low NPSH:                             | N                         |
| Pump orientation:                     | Vertical                  |
| Shaft seal arrangement:               | Single                    |
| Code for shaft seal:                  | HQQV                      |
| Approvals on nameplate:               | CURUS                     |
| Curve tolerance:                      | ISO9906:2012 3B           |
| Pump version:                         | A                         |
| Model:                                | A                         |
| Cooling:                              | IC 411                    |
| <b>Materials:</b>                     |                           |
| Base:                                 | Cast iron                 |
| Base:                                 | EN 1561 EN-GJL-200        |
| Base:                                 | ASTM A48-25B              |
| Impeller:                             | Stainless steel           |
| Impeller:                             | EN 1.4301                 |
| Impeller:                             | AISI 304                  |
| Material code:                        | A                         |
| Code for rubber:                      | V                         |
| Bearing:                              | SIC                       |
| Bearing:                              | SIC                       |
| <b>Installation:</b>                  |                           |
| Maximum ambient temperature:          | 104 °F                    |
| Maximum operating pressure:           | 362.59 psi                |
| Max pressure at stated temperature:   | 363 psi / 194 °F          |
| Max pressure at stated temperature:   | 363 psi / -4 °F           |
| Type of connection:                   | DIN / ANSI / JIS          |
| Size of inlet connection:             | DN 25/32                  |
| Size of outlet connection:            | DN 25/32                  |
| Pressure rating for connection:       | PN 25                     |
| Flange rating inlet:                  | 250 lb                    |
| Flange size for motor:                | 182TC                     |
| Connect code:                         | FGJ                       |
| <b>Liquid:</b>                        |                           |







Company name:

Created by:

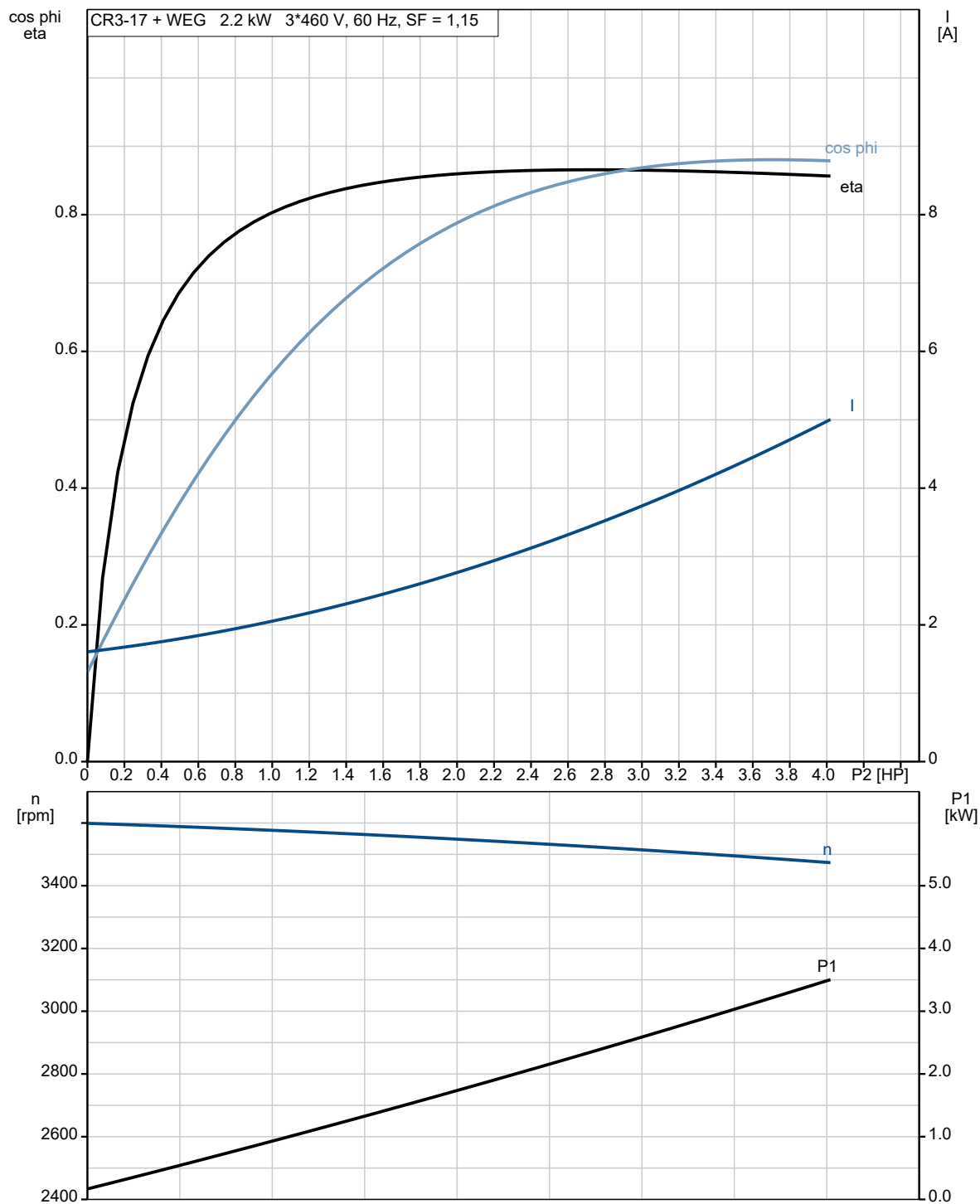
Phone:

Date:

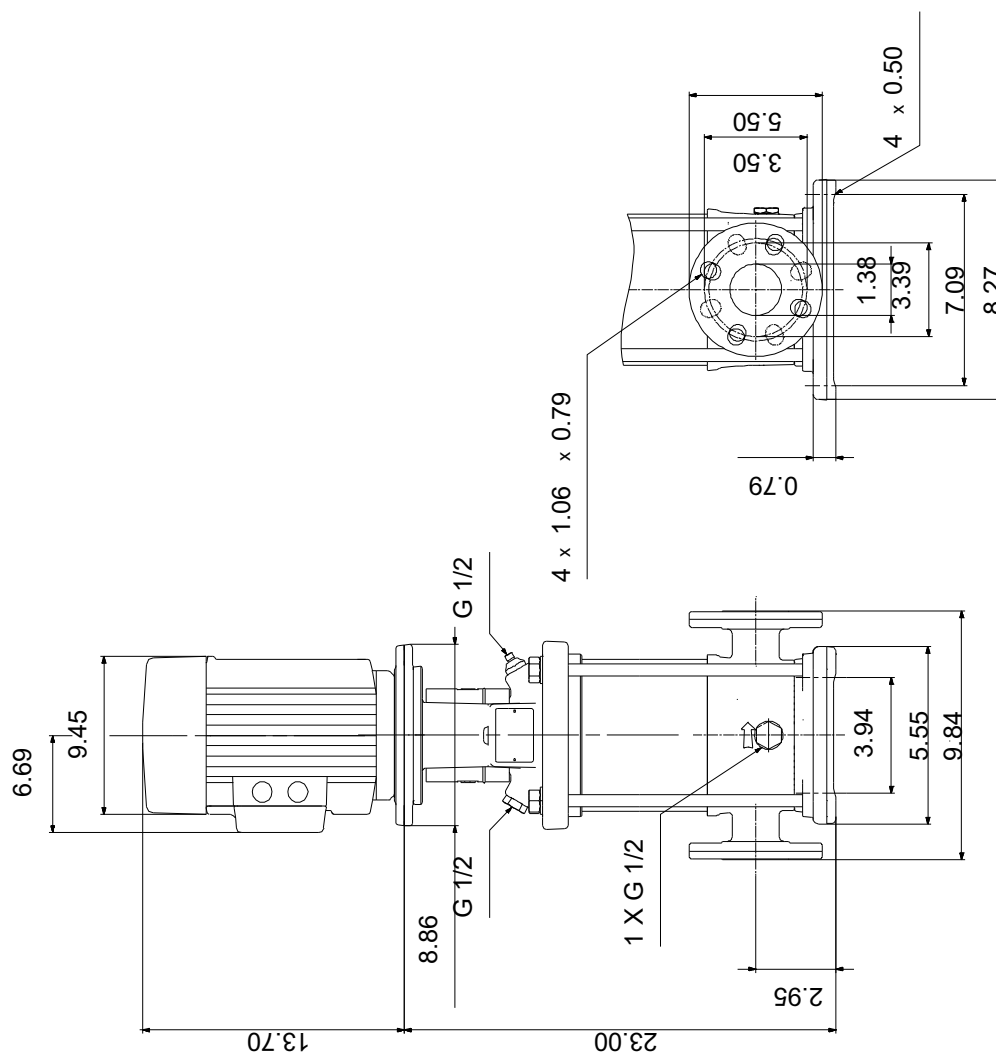
3/22/2021

| Description                    | Value              |
|--------------------------------|--------------------|
| Pumped liquid:                 | Water              |
| Liquid temperature range:      | -4 .. 194 °F       |
| Selected liquid temperature:   | 68 °F              |
| Density:                       | 62.29 lb/ft³       |
| <b>Electrical data:</b>        |                    |
| Motor standard:                | NEMA               |
| Motor type:                    | WEG                |
| IE Efficiency class:           | IE3 / NEMA Premium |
| Rated power - P2:              | 3 HP               |
| Power (P2) required by pump:   | 3 HP               |
| Main frequency:                | 60 Hz              |
| Rated voltage:                 | 3 x 208-230/460 V  |
| Service factor:                | 1.15               |
| Rated current:                 | 8,12-7,34/3,67 A   |
| Starting current:              | 880-880 %          |
| Load current:                  | 8.44/4.22 A        |
| Cos phi - power factor:        | 0.87               |
| Rated speed:                   | 3515 rpm           |
| IE efficiency:                 | IE3 86,5%          |
| Motor efficiency at full load: | 86.5 %             |
| Motor efficiency at 3/4 load:  | 86.5 %             |
| Motor efficiency at 1/2 load:  | 84 %               |
| Number of poles:               | 2                  |
| Enclosure class (IEC 34-5):    | IP55               |
| Insulation class (IEC 85):     | F                  |
| Motor protection:              | NONE               |
| Motor Number:                  | 99883243           |
| <b>Controls:</b>               |                    |
| Frequency converter:           | NONE               |
| <b>Others:</b>                 |                    |
| Net weight:                    | 125 lb             |
| Gross weight:                  | 139 lb             |
| Shipping volume:               | 8.26 ft³           |
| Country of origin:             | US                 |
| Custom tariff no.:             | 8413.70.2040       |

## 99916370 CR 3-17 A-FGJ-A-V-HQQV 60 Hz



**99916370 CR 3-17 A-FGJ-A-V-HQQV 60 Hz**



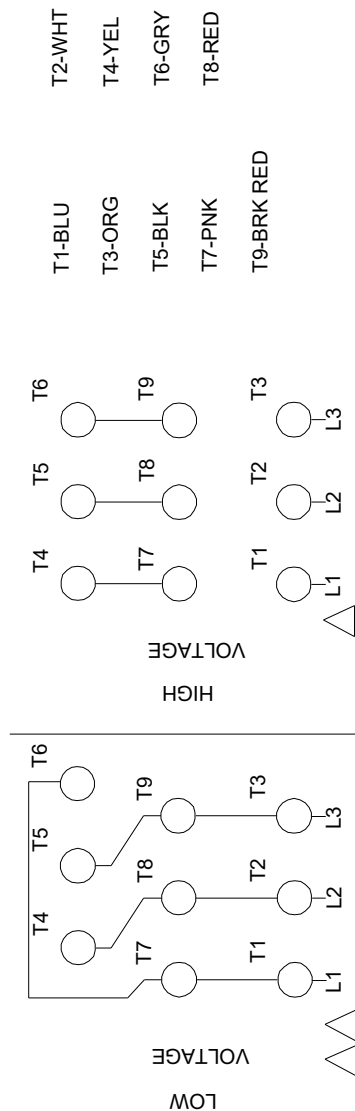
Note! All units are in [in] unless otherwise stated.  
Disclaimer: This simplified dimensional drawing does not show all details.



Company name:  
Created by:  
Phone:

Date: 3/22/2021

## 99916370 CR 3-17 A-FGJ-A-V-HQQV 60 Hz



INTERCHANGE ANY TWO LINE WIRES TO REVERSE THE ROTATION

All units are [in] unless otherwise presented.