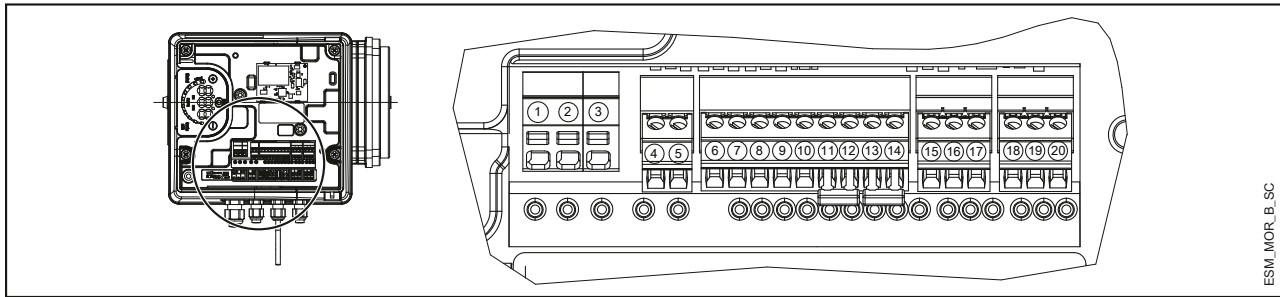


## Commercial Water

### e-SVE SERIES SINGLE PHASE TERMINAL BLOCK

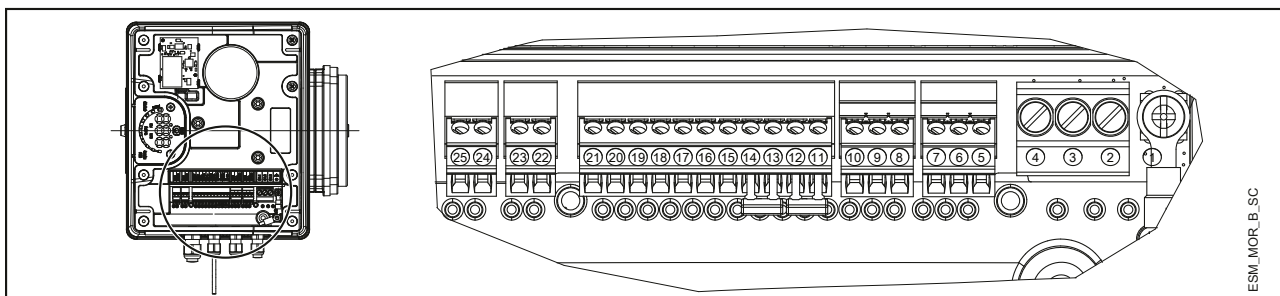


ESM\_MOR\_B\_SC

REF.	ITEM	DESCRIPTION
4	Fault Signal	COM - error status relay
5		NO - error status relay
6	Auxiliary Voltage Supply	Auxiliary voltage supply +15 VDC
7	Analog input 0-10V	Actuator mode 0-10 V input
8		GND for 0-10 V input
9	External Pressure sensor [also Differential]	Power supply external sensor +15 VDC
10		External sensor 4-20 mA input
11	External Start/Stop	External ON/OFF input reference
12		External ON/OFF input
13	External Lack of Water	Low water input
14		Low water reference
15	Communication bus	RS485 port 1: RS485-1N B (-)
16		RS485 port 1: RS485-1P A (+)
17		Electronic GND
18	Communication bus	RS485 port 2: RS485 port 2: RS485-2N B (-) active only with optional module
19		RS485 port 2: RS485 port 2: RS485-2P A (+) active only with optional module
20		Electronic GND

MorsM-en\_a\_sc

### THREE-PHASE TERMINAL BLOCK

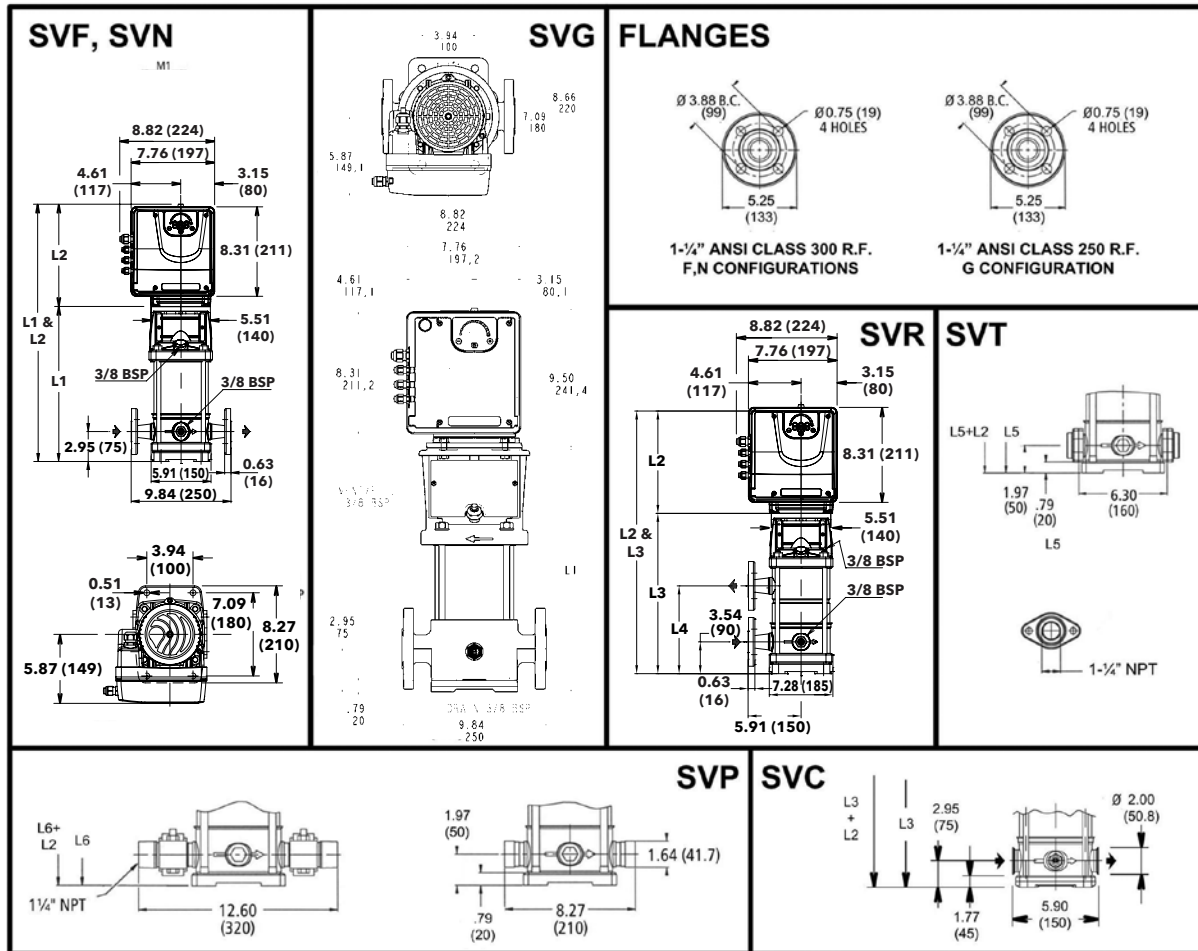


ESM\_MOR\_B\_SC

REF.	ITEM	DESCRIPTION
5	Communication bus	Electronic GND
6		RS485 port 1: RS485-1P A (+)
7	Communication bus	RS485 port 1: RS485-1N B (-)
8		Electronic GND
9	Communication bus	RS485 port 2: RS485 port 2: RS485-2P A (+) active only with optional module
10		RS485 port 2: RS485 port 2: RS485-2N B (-) active only with optional module
11	External Lack of Water	Low water reference
12		Low water input
13	External Start/Stop	External ON/OFF input reference
14		External ON/OFF input
15	External Pressure sensor	External sensor 4-20 mA input
16		Power supply external sensor +15 VDC
17	External Pressure sensor [also Differential]	External sensor 4-20 mA input
18		Power supply external sensor +15 VDC
19	Analog input 0-10V	GND for 0-10 V input
20		Actuator mode 0-10 V input
21	Auxiliary Voltage Supply	Auxiliary voltage supply +15 VDC
22	Motor running signal	Normally open contact
23		Common contact
24	Fault Signal	NO - error status relay
25		COM - error status relay

MorsT-en\_a\_sc

### 1, 3, 5SVE SERIES - SINGLE PHASE VERSION DIMENSIONS AND WEIGHTS

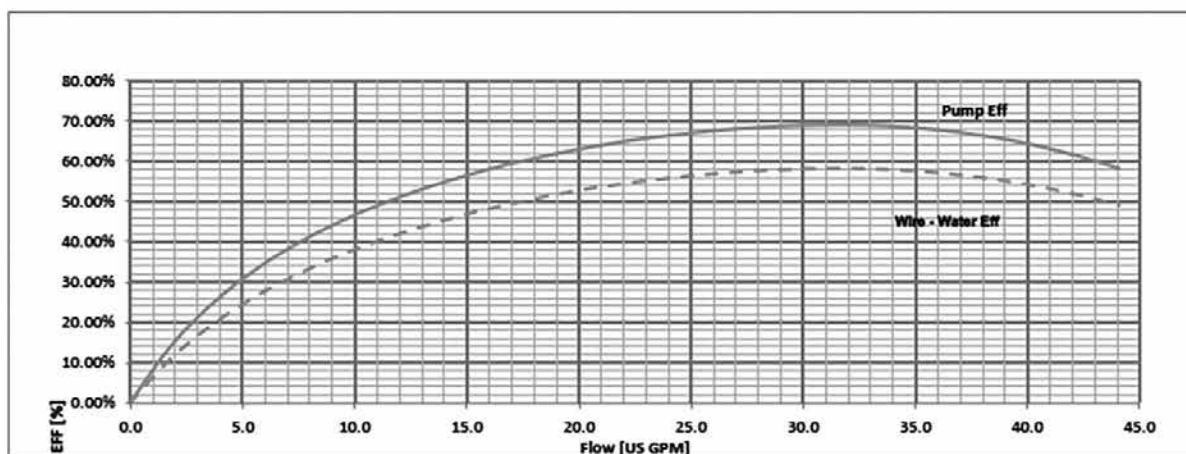
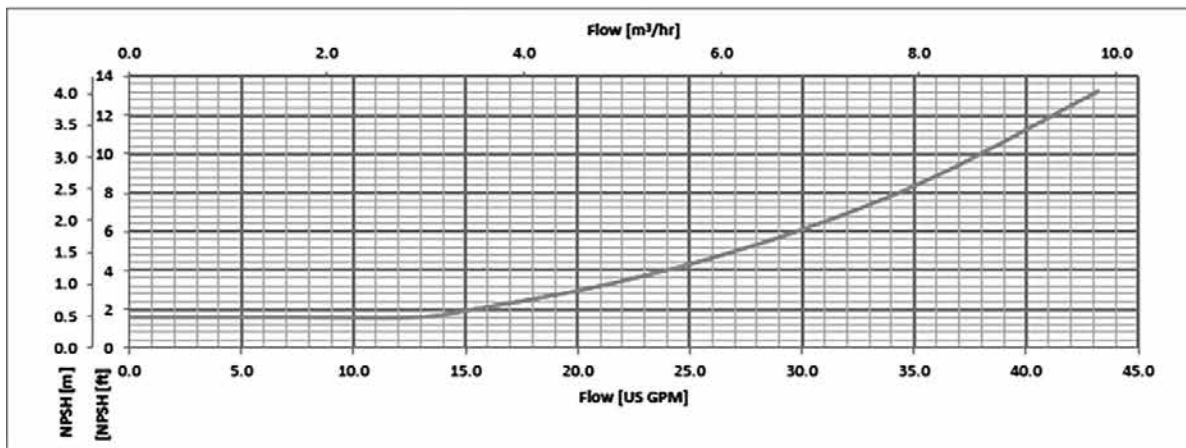
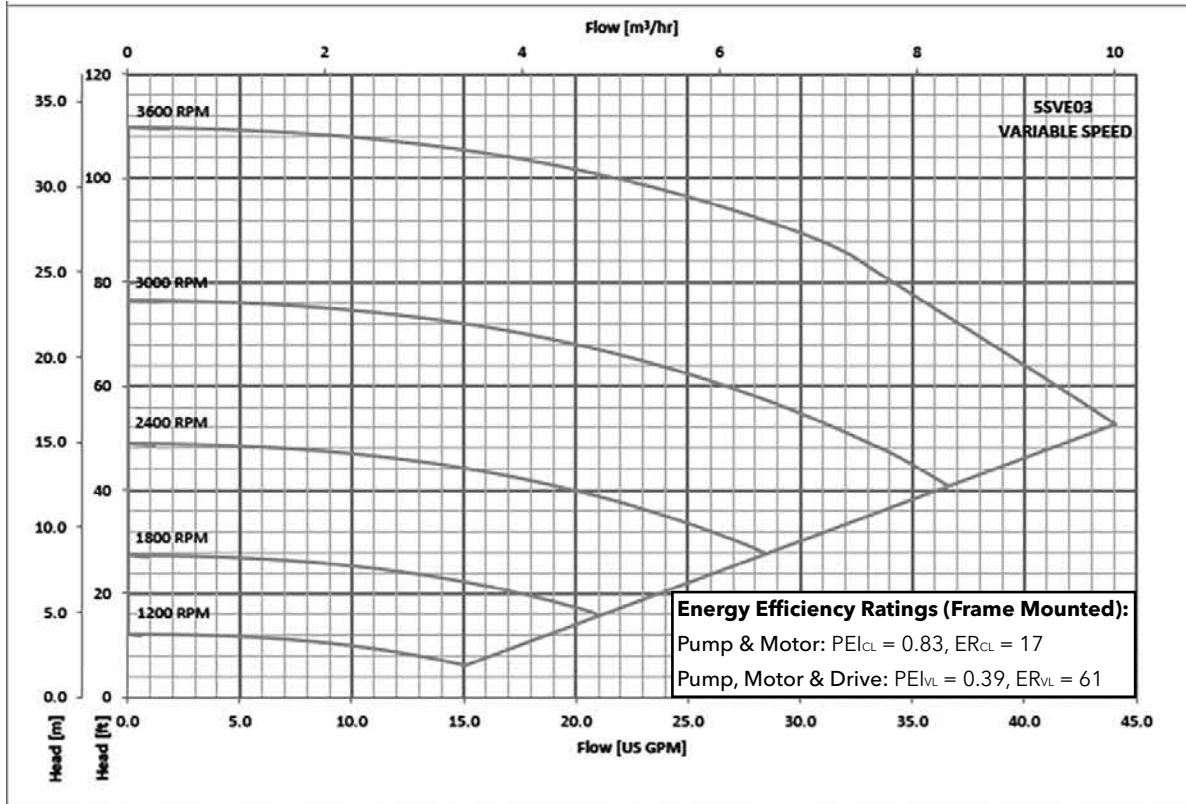


### 5SV SERIES – 60 HZ, 3600 RPM TEFC ENCLOSURES

Pump Type Stages	Motor		Dimensions (in)									Weight (lbs)		
	P <sub>N</sub> (HP)	Type 1 x 208-240 V	L1	L2	L3	L4	L5	L6	M (Ref.)	D1 (max.)	D2	Pump Only	Motor	Pump/Motor
5SVE2	0.75	ESM90R/105 56C	13.86	9.53	–	–	12.88	12.88	5.19	5.20	6.50	25	17	42
5SVE3	1	ESM90R/107 56C	13.86	9.53	–	–	12.88	12.88	5.74	5.20	6.50	26	17	43
5SVE4	1.5	ESM90R/111 56C	14.85	9.53	–	–	13.86	13.86	5.74	5.20	6.50	28	20	48
5SVE6	2	ESM90R/115 56C	16.81	9.53	–	–	15.83	15.83	5.74	5.20	6.50	30	20	50

\* Maximum value in specified range; P<sub>N</sub> = HP Rating; P<sub>1</sub> = input power; I = input current.

### 5SVE SERIES OPERATING CHARACTERISTICS



The performances are valid for liquid with density  $\rho = 1.0 \text{ Kg/dm}^3$  and kinematic viscosity  $\nu = 1 \text{ mm}^2/\text{sec}$ .