

PROJECT:	_____	UNIT TAG:	_____	QUANTITY:	_____
	_____	TYPE OF SERVICE:	_____		_____
REPRESENTATIVE:	_____	SUBMITTED BY:	_____	DATE:	_____
ENGINEER:	_____	APPROVED BY:	_____	DATE:	_____
CONTRACTOR:	_____	ORDER NO.:	_____	DATE:	_____

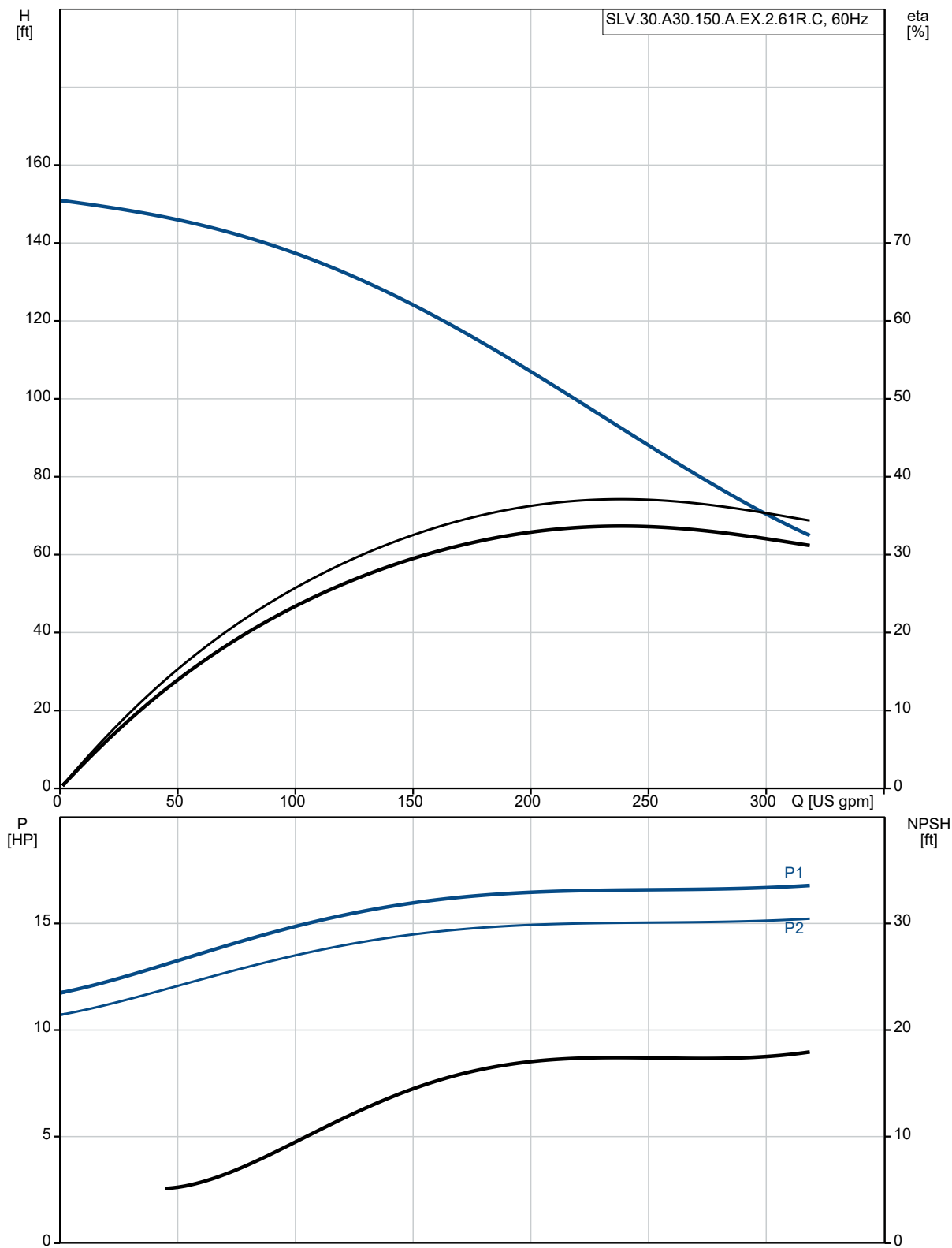
SLV.30.A30.150.A.EX.2.61R.C

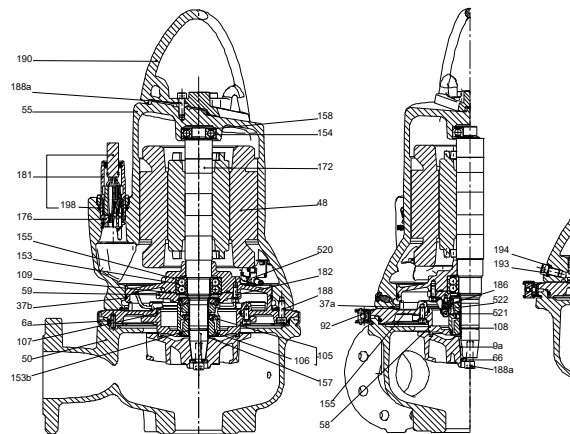
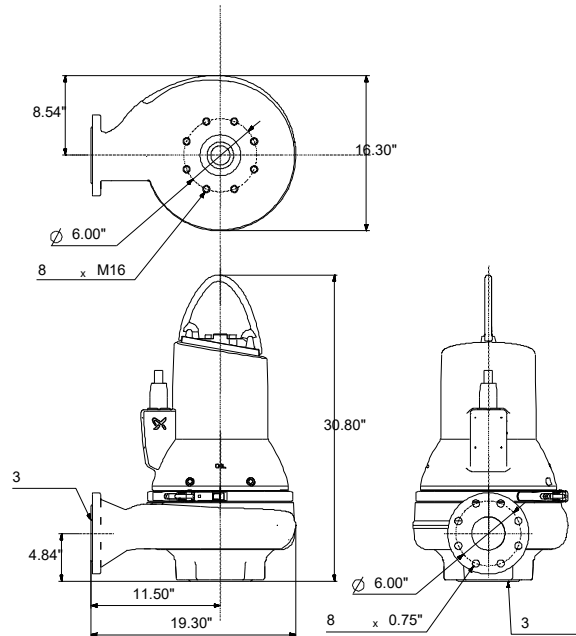


Sewage pumps

Product photo could vary from the actual product


Conditions of Service	Pump Data	Motor Data
Efficiency: _____	Liquid max temp: 104 °F	Rated voltage: 230/460 V
Liquid: any viscous fluid	Maximum ambient temperature: 104 °F	Main frequency: 60 Hz
NPSH required: ft	Approvals: CSA, FM	Number of poles: 2
Specific Gravity: 1.000	Flange standard: ANSI	Enclosure class: IP68
	Product number: 99030296	Insulation class: H
		Motor protection: Pt1000
		Eff. 1/1: 90.7 %





**Materials:**

Pump housing: Cast iron  
 Pump housing: EN 5.1301 EN-GJL-250  
 Pump housing: ASTM A48-250B  
 Impeller: Cast iron  
 Impeller: ASTM A48-250B  
 Impeller: EN 5.1301 EN-GJL-250  
 Motor: EN-GJL-250

Count	Description
1	<p><b>SLV.30.A30.150.A.EX.2.61R.C</b></p>  <p>Product photo could vary from the actual product</p> <p>Product No.: <a href="#">99030296</a></p> <p>Non-self-priming, single-stage, centrifugal pump designed for handling wastewater, process water and unscreened raw sewage.</p> <p>The pump is designed for intermittent and continuous operations in submerged installation. The efficient SuperVortex impeller provides passage of long fibres and solids up to 3 1/8 in and is suitable for wastewater with a dry matter content of up to 5 %. A unique stainless-steel clamp assembling system enables quick and easy disassembly of the pump from the motor unit for service and inspection. No special tools are required. Pipework connection is via a ANSI flange.</p> <p>The pump is explosion-proof.</p> <p><b>Further product details</b></p> <p>The pump is suitable for both temporary and permanent installation either as free-standing on ring stand or on an auto-coupling system.</p> <p><b>Pump</b></p> <p>The pump housing, motor top and impeller are made of cast iron (EN-GJL-250). All surfaces of the cast iron parts are protected with cathodoresis coating. The surface of the cast iron pump parts is afterwards painted with environmental friendly powder coating (type NCS 9000N (black), gloss code 30, thickness 100 µm) which ensures high impact and corrosion protection.</p> <p>The final pump is assembled from already painted parts which ensures that no rust or scale can be formed in grooves between parts, etc.</p> <p>The SuperVortex impeller is a symmetrical multivane winglet impeller. The design ensures a flow entirely outside the impeller providing limited contact between the impeller and the pumped liquid. This ensures that long fibres, rags and more passes freely through the pump without getting caught and without causing clogging or jamming.</p> 

5/14



Company name:

Created by:

Phone:

Date:

12/15/2021

Count	Description
	Water-in-oil sensor: with water-in-oil sensor
	Liquid:
	Pumped liquid: any viscous fluid
	Liquid max temp: 104 °F
	Density: 62.29 lb/ft <sup>3</sup>
	Technical:
	Type of impeller: Super Vortex
	Maximum particle size: 3 1/8 in
	Primary shaft seal: SIC/SIC
	Approvals on nameplate: CSA, FM
	Curve tolerance: ANSI/HI11.6:2017 3B
	Materials:
	Pump housing: Cast iron EN 5.1301 EN-GJL-250 ASTM ASTM A48-250B
	Impeller: Cast iron EN 5.1301 EN-GJL-250 ASTM A48-250B
	Motor: EN-GJL-250
	Installation:
	t max amb: 104 °F
	Flange standard: ANSI
	Pump inlet: 80
	Pump outlet: 80
	Pressure stage: PN 10
	Maximum installation depth: 65.6 ft
	Auto-coupling: 97626239
	Frame range: D
	Electrical data:
	Power input - P1: 12.6 kW
	Rated power - P2: 15 HP
	Main frequency: 60 Hz
	Rated voltage: 3 x 230/460 V
	Voltage tolerance: +10/-10 %
	Max starts per. hour: 20
	Rated current: 37/20 A
	Starting current: 240 A
	Cos phi - power factor: 0.87
	Cos phi - p.f. at 3/4 load: 0.84
	Cos phi - p.f. at 1/2 load: 0.77
	Rated speed: 3530 rpm
	Motor efficiency at full load: 90.7 %
	Motor efficiency at 3/4 load: 91.2 %
	Motor efficiency at 1/2 load: 91.2 %
	Number of poles: 2



Company name:

Created by:

Phone:

Date:

12/15/2021

Count	Description
	Start. method: star/delta
	Enclosure class (IEC 34-5): IP68
	Insulation class (IEC 85): H
	Explosion proof: yes
	Length of cable: 49 ft
	Cable type: SEOOW 600V
	Others:
	Net weight: 396 lb
	Country of origin: HU
	Custom tariff no.: 8413.70.2004



Company name:

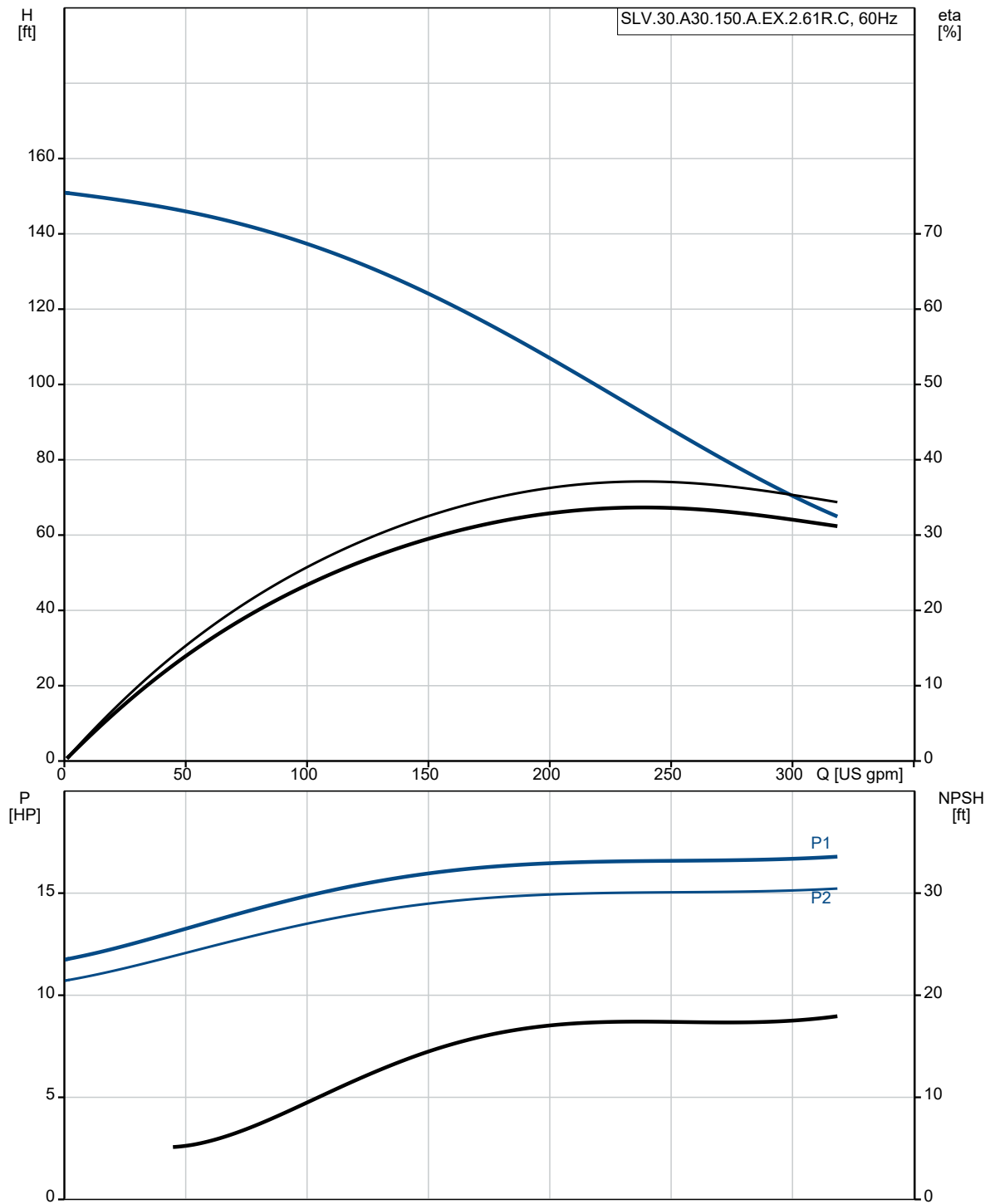
Created by:

Phone:

Date:

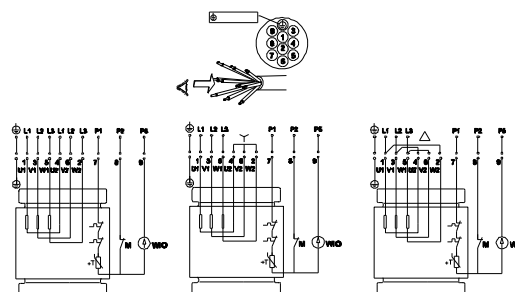
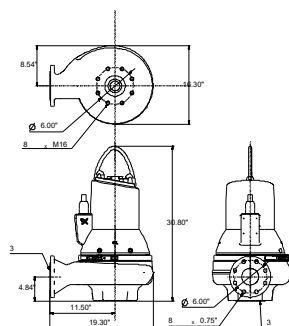
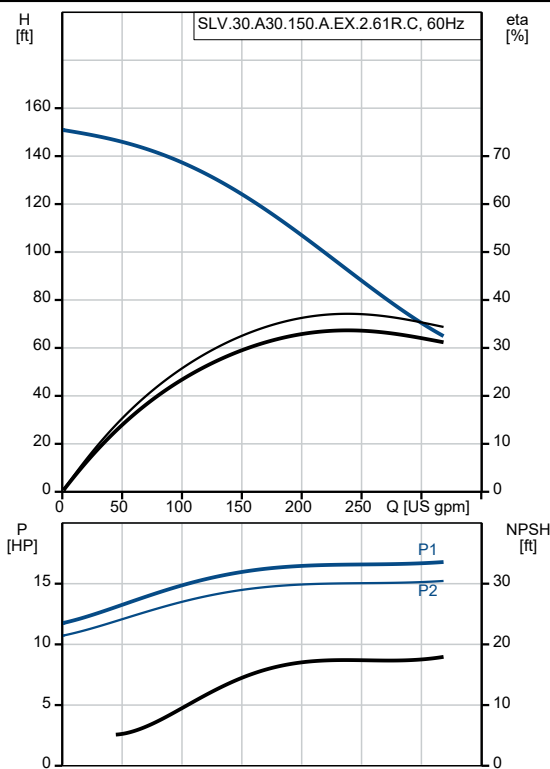
12/15/2021

## 99030296 SLV.30.A30.150.A.EX.2.61R.C 60 Hz





Description	Value
<b>General information:</b>	
Product name:	SLV.30.A30.150.A.EX.2.61R.C
Product No.:	99030296
EAN:	5712605418993
<b>Technical:</b>	
Max flow:	317 US gpm
Max flow:	317 US gpm
Head max:	151.9 ft
Type of impeller:	Super Vortex
Maximum particle size:	3 1/8 in
Primary shaft seal:	SIC/SIC
Approvals on nameplate:	CSA, FM
Curve tolerance:	ANSI/HI11.6:2017 3B
Cooling jacket:	without cooling jacket
<b>Materials:</b>	
Pump housing:	Cast iron
Pump housing:	EN 5.1301 EN-GJL-250
Pump housing:	ASTM ASTM A48-250B
Impeller:	Cast iron
Impeller:	EN 5.1301 EN-GJL-250
Impeller:	ASTM A48-250B
Motor:	EN-GJL-250
<b>Installation:</b>	
t max amb:	104 °F
Flange standard:	ANSI
Pump inlet:	80
Pump outlet:	80
Pressure stage:	PN 10
Maximum installation depth:	65.6 ft
Inst dry/wet:	SUBMERGED
Installation:	Vertical
Auto-coupling:	97626239
Frame range:	D
<b>Liquid:</b>	
Pumped liquid:	any viscous fluid
Liquid max temp:	104 °F
Density:	62.29 lb/ft³
<b>Electrical data:</b>	
Power input - P1:	12.6 kW
Rated power - P2:	15 HP
Main frequency:	60 Hz
Rated voltage:	3 x 230/460 V
Voltage tolerance:	+10/-10 %
Max starts per. hour:	20
Rated current:	37/20 A
Starting current:	240 A
Cos phi - power factor:	0.87
Cos phi - p.f. at 3/4 load:	0.84





Company name:

Created by:

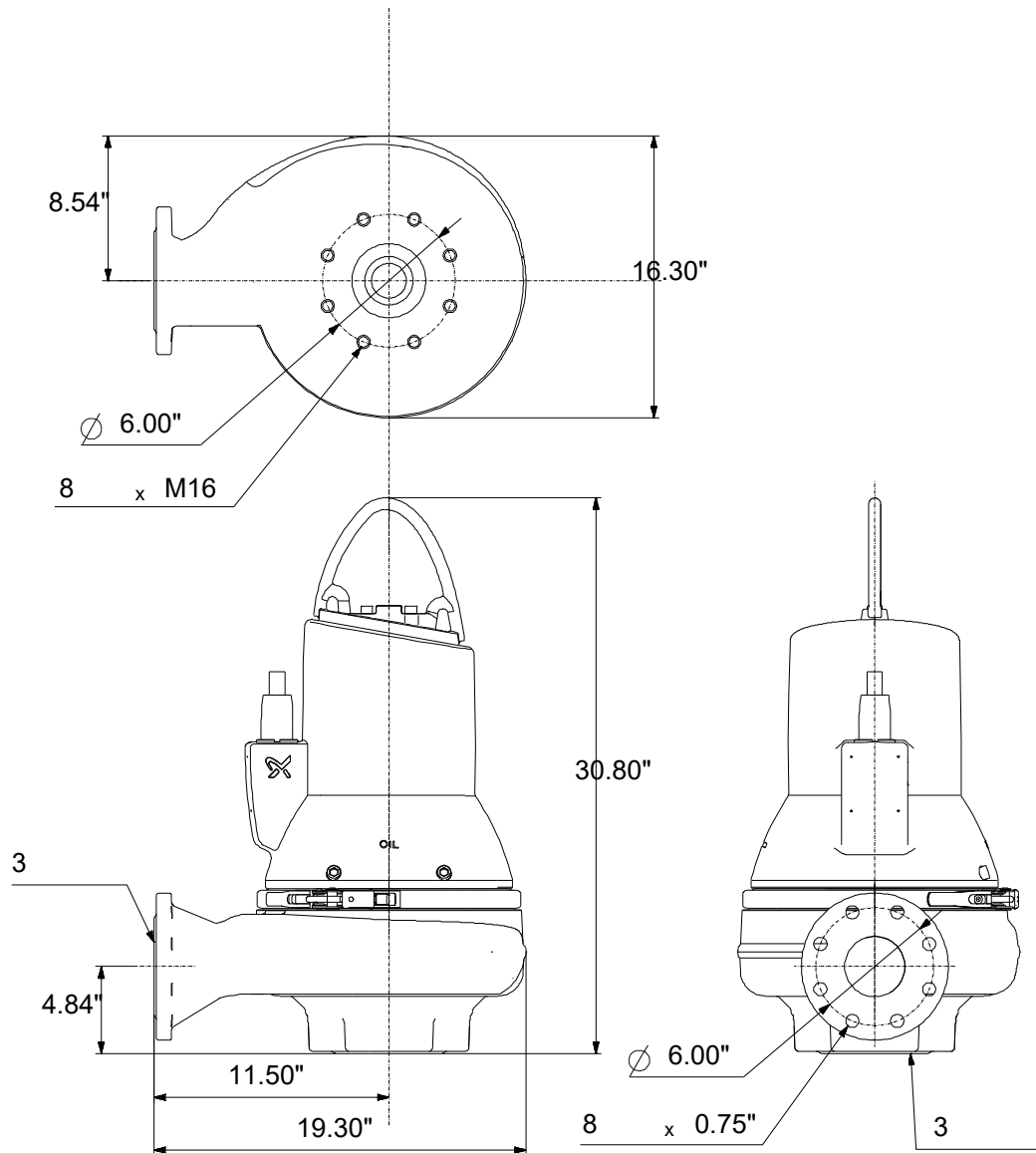
Phone:

Date:

12/15/2021

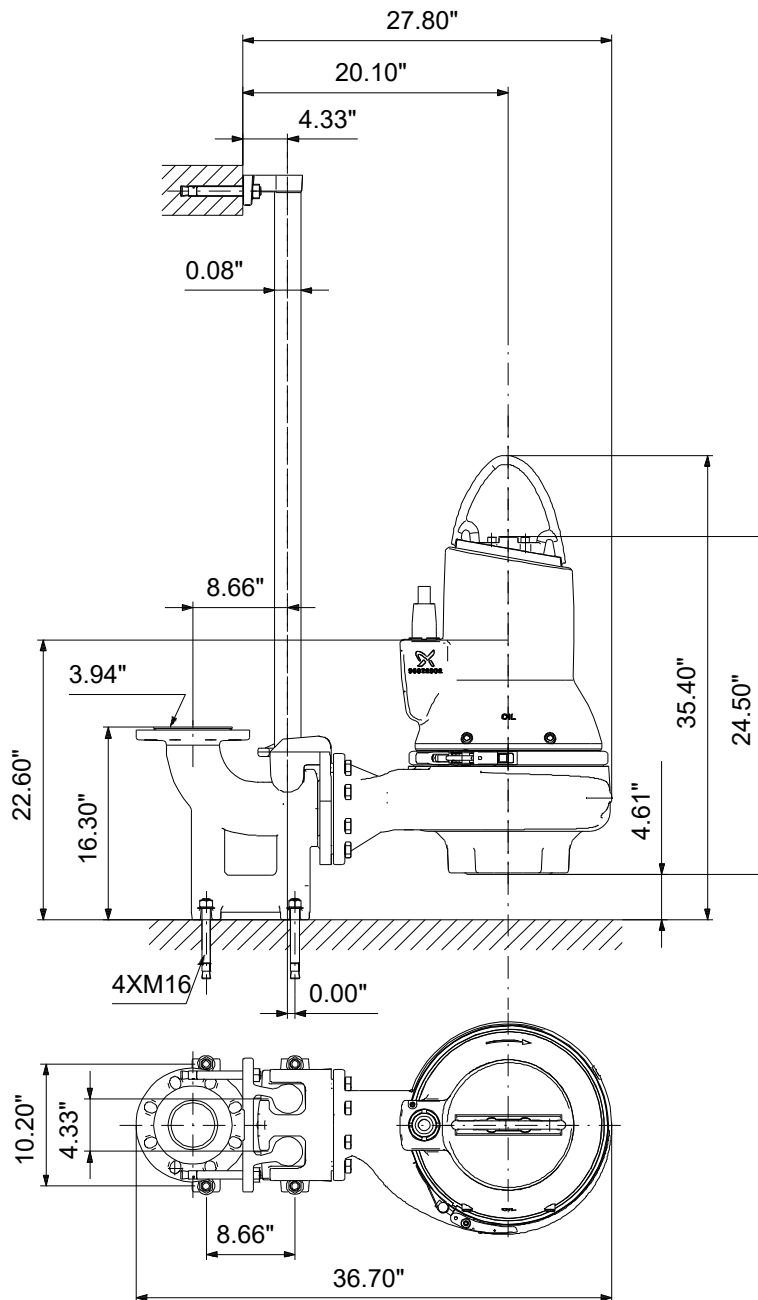
Description	Value
Cos phi - p.f. at 1/2 load:	0.77
Rated speed:	3530 rpm
Motor efficiency at full load:	90.7 %
Motor efficiency at 3/4 load:	91.2 %
Motor efficiency at 1/2 load:	91.2 %
Number of poles:	2
Start. method:	star/delta
Enclosure class (IEC 34-5):	IP68
Insulation class (IEC 85):	H
Explosion proof:	yes
Built-in motor protection:	Pt1000
Length of cable:	49 ft
Cable type:	SEOOW 600V
<b>Controls:</b>	
Control box:	not included
Moisture sensor:	with moisture sensors
Water-in-oil sensor:	with water-in-oil sensor
<b>Others:</b>	
Net weight:	396 lb
Country of origin:	HU
Custom tariff no.:	8413.70.2004

## 99030296 SLV.30.A30.150.A.EX.2.61R.C 60 Hz



Note! All units are in [in] unless otherwise stated.  
Disclaimer: This simplified dimensional drawing does not show all details.

## 99030296 SLV.30.A30.150.A.EX.2.61R.C 60 Hz



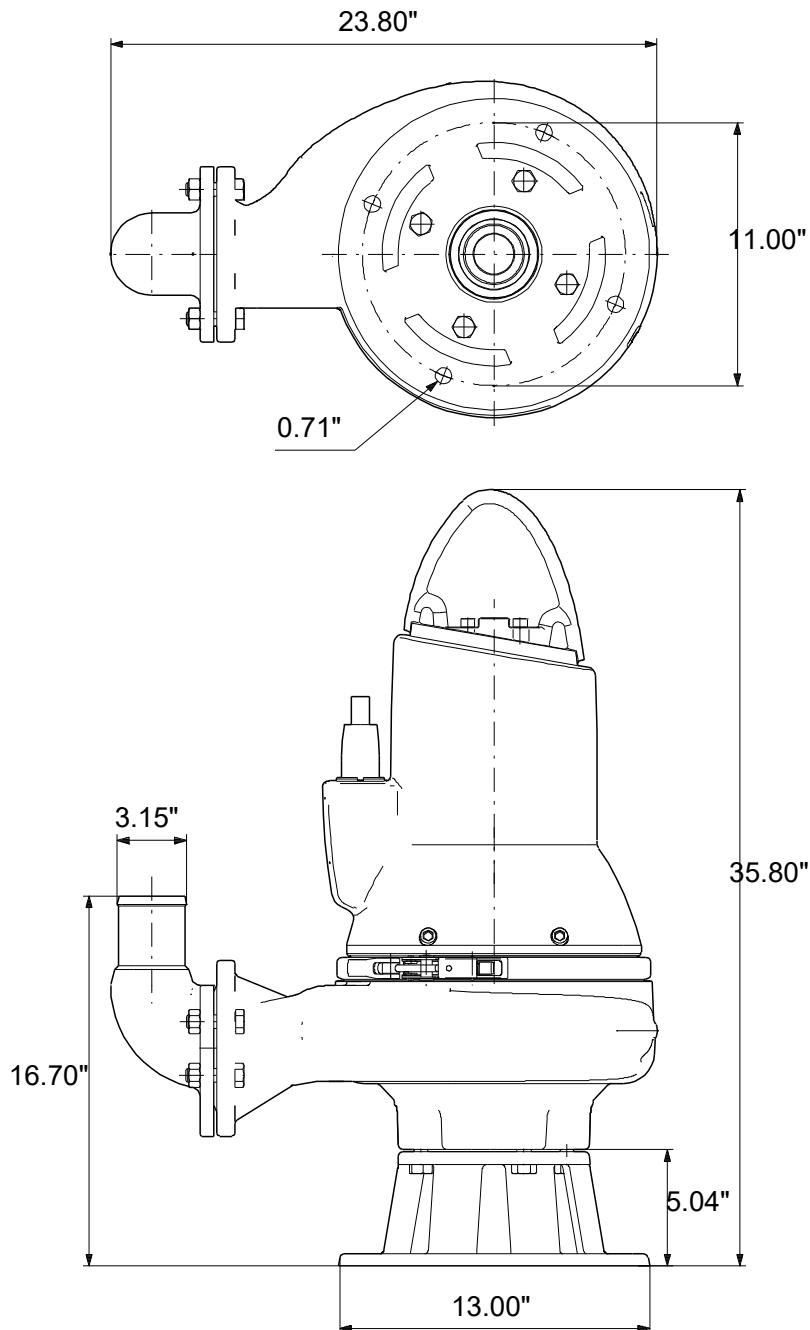
Note! All units are in [in] unless otherwise stated.  
Disclaimer: This simplified dimensional drawing does not show all details.



Company name:  
Created by:  
Phone:

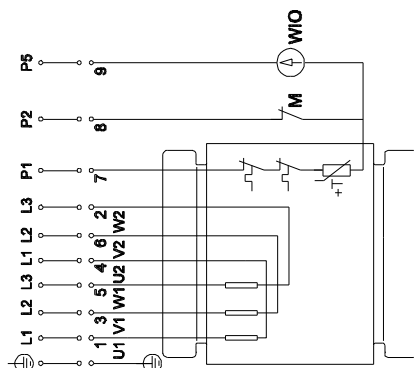
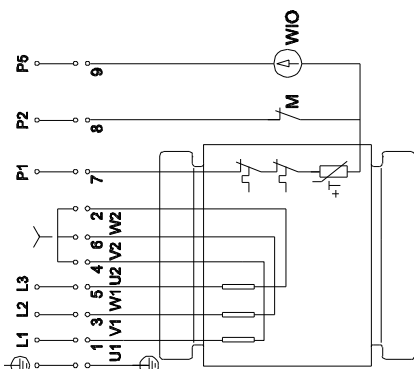
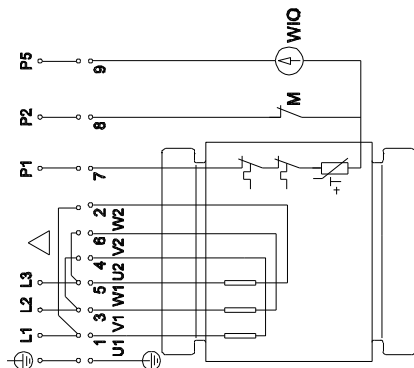
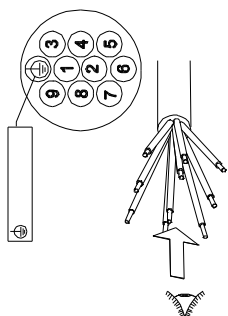
Date: 12/15/2021

**99030296 SLV.30.A30.150.A.EX.2.61R.C 60 Hz**



Note! All units are in [in] unless otherwise stated.  
Disclaimer: This simplified dimensional drawing does not show all details.

## 99030296 SLV.30.A30.150.A.EX.2.61R.C 60 Hz



All units are [in] unless otherwise presented.