



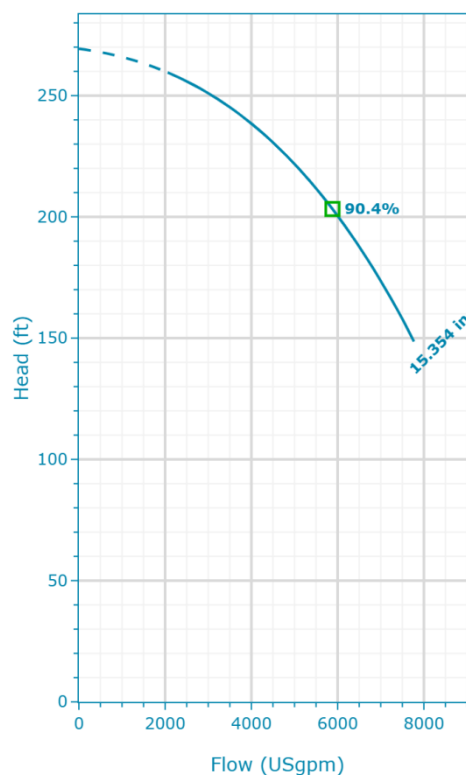
**EXC10X12X155-350H6D4NTR-  
WA1NCFG4BFB**

Created On: 8/5/25

## eXC10x12x155-350H6D4NTR-WA1NCFG4BFB | Configuration Summary



e-XC split case double suction centrifugal pump provides high flows at high efficiencies with a broad range of materials and configurations to serve the most demanding industrial needs.



### PUMP

Installation	Pump Size
Complete Pump	10 x 12 x 15.5
	Shaft Diameter
	2.6 in
	Max Allowable Working Pressure
	175 psi

### MATERIALS

Casing	Shaft
Cast Iron	Alloy Steel 4140
Casing Wear Ring	Shaft Construction
Bronze C90300	Dry (Seal on Sleeve)
Impeller and Impeller Wear Ring	Shaft Sleeve
Stainless Steel CF8 (304)	Stainless Steel CF8 (304)
Impeller Key	NSF 61 Certified
C45 Medium Carbon Steel (GB 699-88)	Yes
Seal Flush Lines	ScotchKote 134 Coating
Stainless Steel CF8 (304)	No

### SEAL

Vendor	Rotating Face
Roplan	Carbon
Type of Seal	Stationary Face
Rubber Bellow Seals	Silicon Carbide
Model	Elastomers
MR4	EPDM
Diameter	Metal Components
3.63 in	Stainless Steel CF8M (316)

### STANDARD OPTIONS

### MOTOR

Vendor	Power
Baldor	350 hp
Frequency (Hz)	Phase (~)
60	3
Poles	Voltage
4	460 V
Enclosure	Insulated Bearing
TEPE	No
Frame Size	Thermostat
449TS	No
	50° C Ambient
	No
	Shaft Grounding Ring
	No
	Space Heater
	No
	Others - Not Listed
	No
	Sizing Method
	Max Shaft Power Across Curve
	Service Factor
	1.15
	Allow Service Factor Usage
	No
	Upsize
	No

### BASEPLATE

### FLANGE

Project:  
eXC10x12x155-350H6D4NTR-  
WA1NCFG4BFB

Created By:  
Kelly Kresa

Created On:  
8/5/25

Last Update:  
-

<b>Pump Rotation</b> Clockwise	<b>Shaft Material Certification</b> No
<b>Bearing Bracket</b> Grease Lubricated	<b>Shaft Sleeve Material Certification</b> No
<b>Motor Mounting</b> Xylem To Supply & Mount Motor	<b>Impeller Material Certification</b> No
<b>Baseplate Options</b> Grouted	<b>Casing Material Certification</b> No
<b>Impeller Balancing</b> ANSI G6.3	<b>Others Material Certification</b> No
<b>Hydrostatic Test</b> Standard	<b>Temperature Sensor</b> No
<b>Performance Test</b> No Performance Test	<b>Vibration Sensor</b> No
<b>Acceptance Grade</b> Manufacturer's Standard	<b>Pressure Sensor</b> No
	<b>Paint</b> Standard Paint (Blue)
	<b>Language Of Destination</b> English

**Flange Name**  
ANSI - CL125#

#### COUPLING

<b>Coupling Type</b> Non Spacer	<b>Coupling Vendor</b> TB Woods Duraflex
<b>Spacer Length</b> 0.5 in	<b>Coupling Name</b> WE70
<b>Coupling Guard</b> KIT-4	

## eXC10x12x155-350H6D4NTR-WA1NCFG4BFB | Product Details

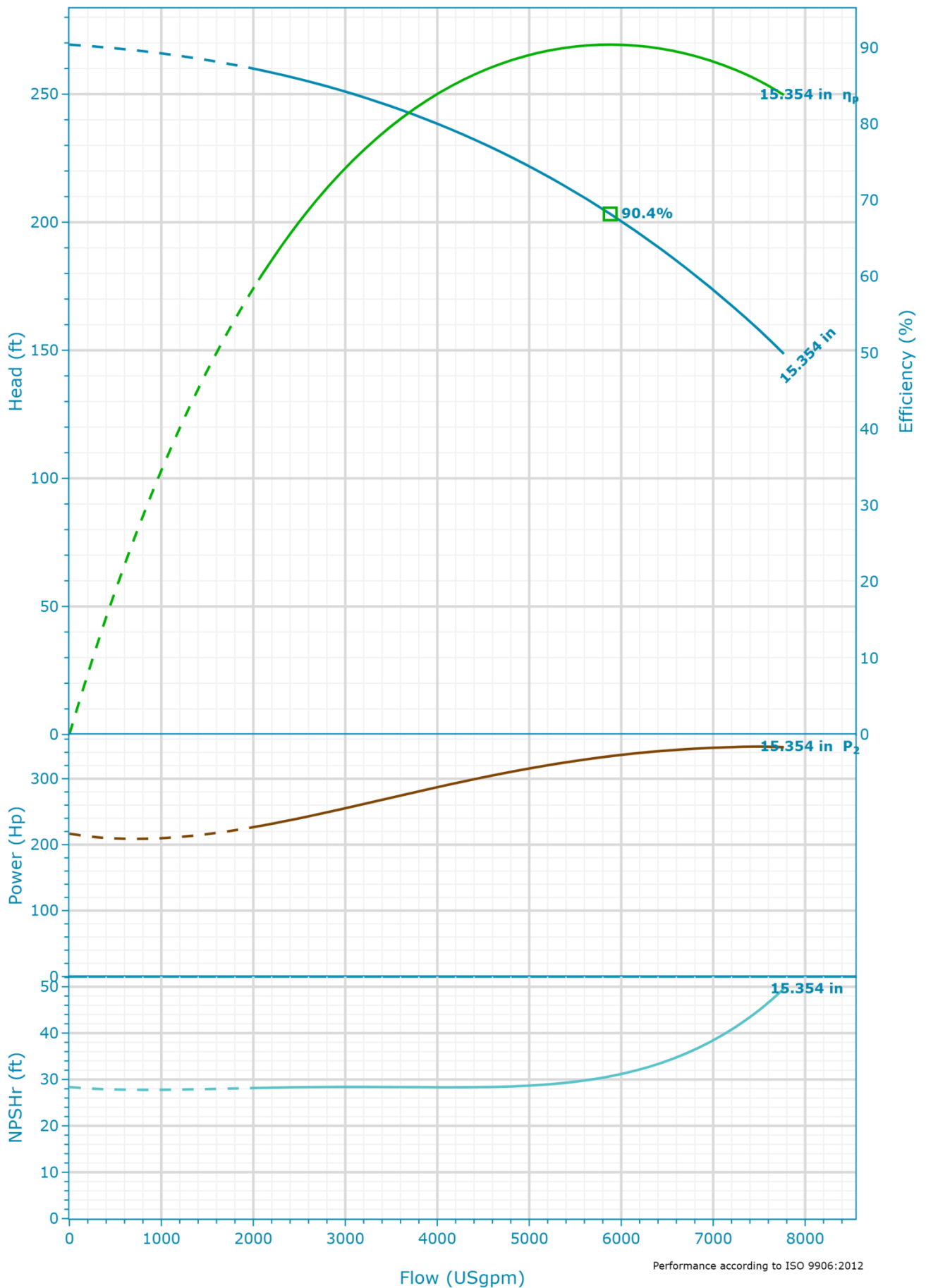
### Construction Materials

<b>Other casted components (-)</b>	<b>Gaskets (-)</b>
Cast Iron NO.30	Aramid Fiber
<b>Bolts (-)</b>	<b>Retaining ring (-)</b>
Steel	304 Stainless steel
<b>Pipe Plugs (-)</b>	<b>Shoulder rings (-)</b>
Steel	Steel
<b>O-Rings (-)</b>	<b>Protective Guard (-)</b>
Rubber (FKM)	304 Stainless steel

### Motor

<b>Enclosure</b>	<b>Rated Voltage</b>	<b>Phase</b>
TEPE	460 V	3
<b>Speed</b>	<b>Frame Size</b>	<b>Service Factor</b>
1,780 rpm	449TS	1.15

## eXC10x12x155-350H6D4NTR-WA1NCFG4BFB | Hydraulic Data & Performance Curve



### Selection

Series	Acceptance Grade
e-XC	Manufacturer's Standard
Name	System Type
10x12x15.5 1780rpm	Single Pump
Stages	Operating Pumps
1	1
Frequency	Standby Pumps
60 Hz	No Standby Pump
Impeller Diameters	
1x 15.354"	
Max Impeller Diameter (ref)	
15.354 in	
Min Impeller Diameter (ref)	
11.929 in	

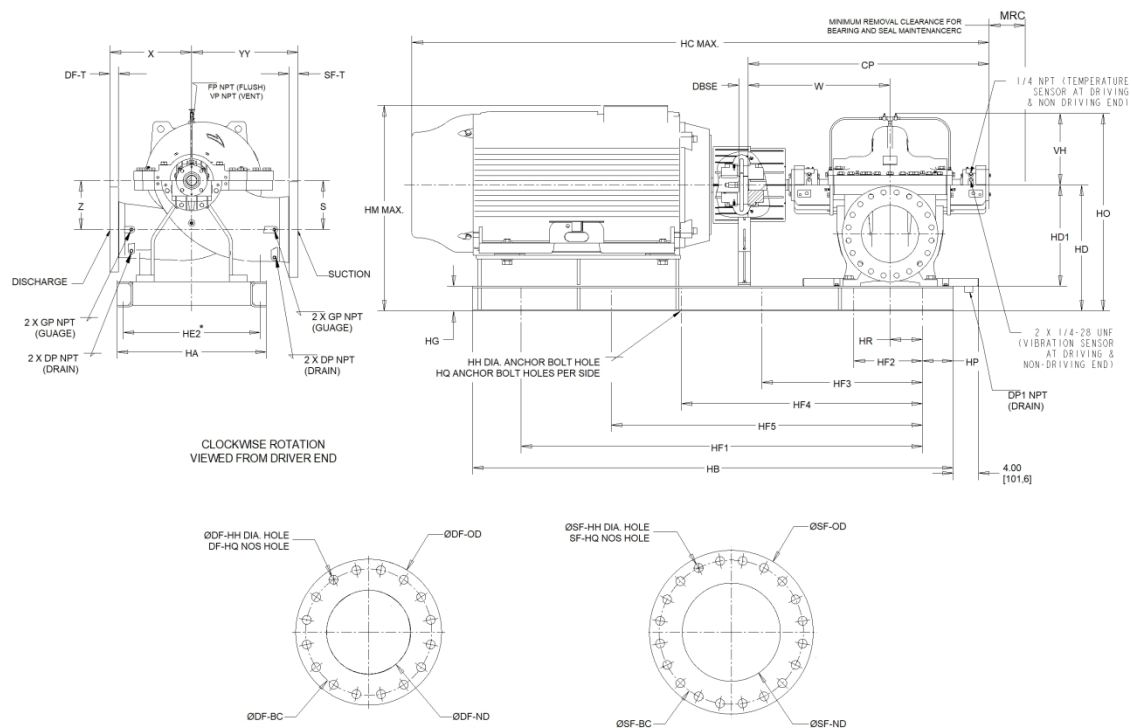
### Fluid

Fluid Type	Density
Water	62.428 lb/ft <sup>3</sup>
Fluid Temperature	Dynamic Viscosity
39.2 °F	1.567212 cP
Specific Gravity	Fluid Vapor Pressure
1	0.118 psi

### Design Curve

Rated Speed	BEP
1,780 RPM	90.4 %
Min Flow	BEP Flow
2,058.14 USgpm	5,880.4 USgpm
Max Flow	BEP Head
7,768.43 USgpm	203.24 ft
H@QMin	Max Operating Pressure
259.53 ft	116.6 psi
H@QMax	Max P2
148.6 ft	348.76 Hp

## eXC10x12x155-350H6D4NTR-WA1NCFG4BFB | Dimensional Data & Drawing



### Dimensions

<b>Suction</b> 12 in	<b>CP</b> 54.53 in	<b>YY</b> 21.65 in	<b>DBSE</b> 0.5 in
<b>Discharge</b> 10 in	<b>Z</b> 11.81 in	<b>MRC</b> 3.54 in	<b>HA</b> 32 in
<b>W</b> 30.24 in	<b>HD1</b> 22.83 in	<b>HD</b> 26.83 in	<b>HB</b> 100 in
<b>X</b> 19.69 in	<b>S</b> 11.81 in	<b>HO</b> 41.99 in	<b>HE2</b> 30 in
<b>HF1</b> 90 in	<b>HG</b> 4 in	<b>HR</b> 10.09 in	<b>DP</b> 0.5 in
<b>HF2</b> 22.5 in	<b>HH</b> 1 in	<b>HC (max)</b> 104.5 in	<b>DP1</b> 0.75 in
<b>HF3</b> 45 in	<b>HP</b> 5 in	<b>HM (max)</b> 40.07 in	<b>GP</b> 0.5 in
<b>HF4</b> 67.5 in	<b>HQ</b> 5 in	<b>VH</b> 15.16 in	<b>FP</b> 0.5 in
<b>VP</b> 0.5 in	<b>DF-T</b> 1.88 in	<b>DF-HQ</b> 12 in	<b>SF-HQ</b> 12 in
<b>Total Weight</b> 2,613.07 lb	<b>SF-T</b> 2 in	<b>DF-HH</b> 1 in	<b>SF-HH</b> 1 in
<b>DF-ND</b> 10 in	<b>DF-BC</b> 14.25 in	<b>SF-BC</b> 17 in	<b>Weight (Motor)</b> 2,300 lb
<b>SF-ND</b> 12 in	<b>DF-OD</b> 16 in	<b>SF-OD</b> 19 in	

<b>Company</b>	PFC Equipment
<b>Contact</b>	Kelly Kresa
<b>Phone No.</b>	7633915856
<b>Email</b>	kkresa@pfcequip.com