



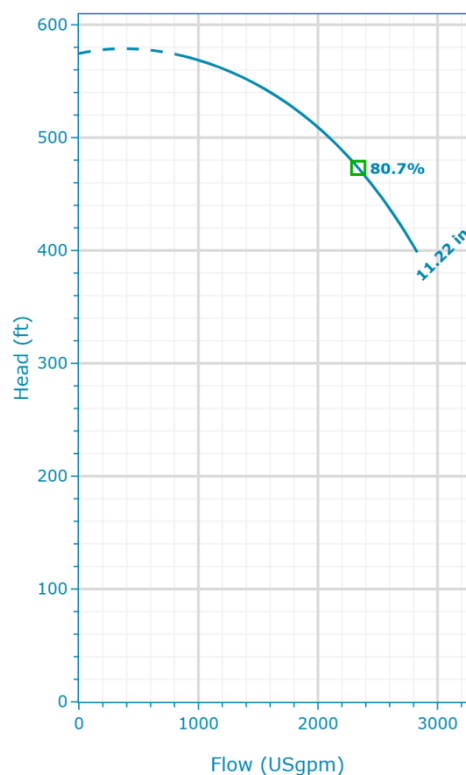
**EXC5X8X14-400H6D2NTZ-
WA2NNNG4ABN**

Created On: 8/5/25

eXC5x8x14-400H6D2NTZ-WA2NNNG4ABN | Configuration Summary



e-XC split case double suction centrifugal pump provides high flows at high efficiencies with a broad range of materials and configurations to serve the most demanding industrial needs.



Performance according to ISO 9906:2012

PUMP

Installation	Pump Size
Complete Pump	5 x 8 x 14
	Shaft Diameter
	2.2 in
	Max Allowable Working Pressure
	450 psi

MATERIALS

Casing	Shaft
Stainless Steel CF8M (316)	Alloy Steel 4140
Casing Wear Ring	Shaft Construction
Nitronic 60	Dry (Seal on Sleeve)
Impeller and Impeller Wear Ring	Shaft Sleeve
Stainless Steel CF8M (316)	Stainless Steel CF8M (316)
Impeller Key	NSF 61 Certified
Stainless Steel 316	Yes
Seal Flush Lines	ScotchKote 134 Coating
Stainless Steel CF8M (316)	No

SEAL

Vendor	Rotating Face
Roplan	Carbon
Type of Seal	Stationary Face
Metal Pusher Seals	Silicon Carbide
Model	Elastomers
MR3	EPDM
Diameter	Metal Components
3.13 in	Stainless Steel CF8M (316)

STANDARD OPTIONS

Pump Rotation	Shaft Material Certification
---------------	------------------------------

MOTOR

Vendor	Power
Baldor	400 hp
Frequency (Hz)	Phase (~)
60	3
Poles	Voltage
2	460 V
Enclosure	Insulated Bearing
TEPE	No
Frame Size	Thermostat
L449TS	No
	50° C Ambient
	No
	Shaft Grounding Ring
	No
	Space Heater
	No
	Others - Not Listed
	No
	Sizing Method
	Max Shaft Power Across Curve
	Service Factor
	1.15
	Allow Service Factor Usage
	No
	Upsize
	No

BASEPLATE

FLANGE

Project:
eXC5x8x14-400H6D2NTZ-
WA2NNNG4ABN

Created By:
Kelly Kresa

Created On:
8/5/25

Last Update:
-

Clockwise	No
Bearing Bracket	Shaft Sleeve Material
Grease Lubricated	Certification
Motor Mounting	No
Xylem To Supply & Mount Motor	Impeller Material Certification
Baseplate Options	No
Grouted	Casing Material Certification
Impeller Balancing	No
ANSI G6.3	Others Material Certification
Hydrostatic Test	No
Standard	Temperature Sensor
Performance Test	No
No Performance Test	Vibration Sensor
Acceptance Grade	No
Manufacturer's Standard	Pressure Sensor
	No
	Paint
	No Paint
	Language Of Destination
	English

Flange Name	
ANSI - CL250#	
COUPLING	
Coupling Type	Coupling Vendor
Non Spacer	TB Woods Duraflex
Spacer Length	Coupling Name
0.5 in	WE50
Coupling Guard	
KIT-3	

eXC5x8x14-400H6D2NTZ-WA2NNNG4ABN | Product Details

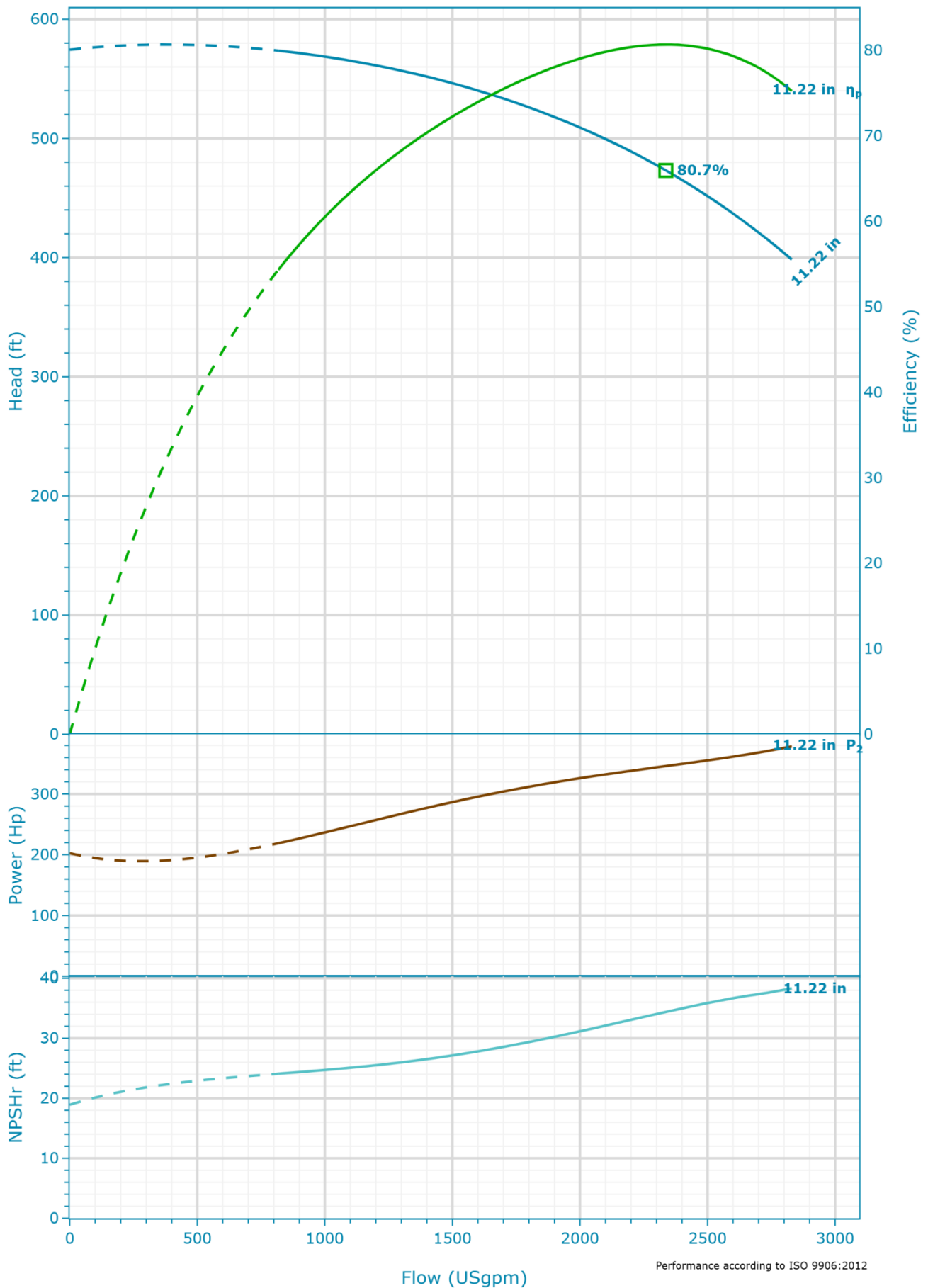
Construction Materials

Other casted components (-)	Gaskets (-)
Cast Iron NO.30	Aramid Fiber
Bolts (-)	Retaining ring (-)
Steel	304 Stainless steel
Pipe Plugs (-)	Shoulder rings (-)
Steel	Steel
O-Rings (-)	Protective Guard (-)
Rubber (FKM)	304 Stainless steel

Motor

Enclosure	Rated Voltage	Phase
TEPE	460 V	3
Speed	Frame Size	Service Factor
3,560 rpm	L449TS	1.15

eXC5x8x14-400H6D2NTZ-WA2NNNG4ABN | Hydraulic Data & Performance Curve



Selection

Series	Acceptance Grade
e-XC	Manufacturer's Standard
Name	System Type
5x8x14 3560rpm	Single Pump
Stages	Operating Pumps
1	1
Frequency	Standby Pumps
60 Hz	No Standby Pump
Impeller Diameters	
1x 11.22"	
Max Impeller Diameter (ref)	
13.976 in	
Min Impeller Diameter (ref)	
7.244 in	

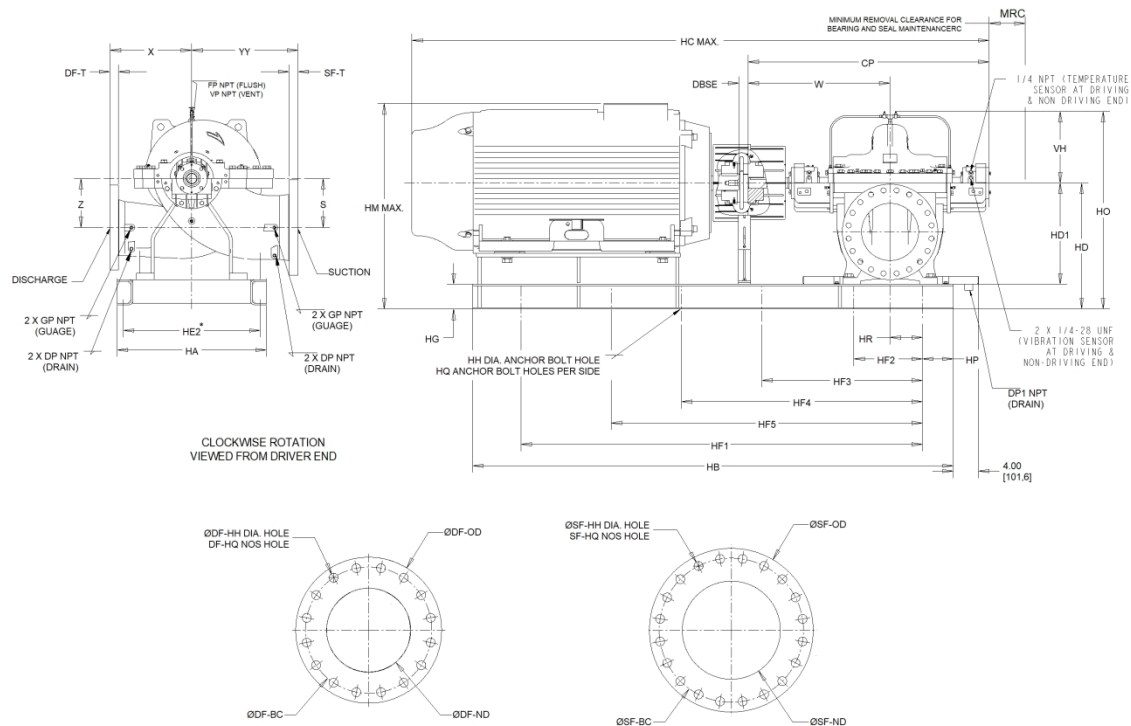
Fluid

Fluid Type	Density
Water	62.428 lb/ft ³
Fluid Temperature	Dynamic Viscosity
39.2 °F	1.567212 cP
Specific Gravity	Fluid Vapor Pressure
1	0.118 psi

Design Curve

Rated Speed	BEP
3,560 RPM	80.7 %
Min Flow	BEP Flow
817.8 USgpm	2,336.58 USgpm
Max Flow	BEP Head
2,830.09 USgpm	473.15 ft
H@QMin	Max Operating Pressure
573.63 ft	250.54 psi
H@QMax	Max P2
398.36 ft	378.38 Hp

eXC5x8x14-400H6D2NTZ-WA2NNNG4ABN | Dimensional Data & Drawing



Dimensions

Suction 8 in	CP 46.26 in	YY 15.75 in	DBSE 0.5 in
Discharge 5 in	Z 9.06 in	MRC 3.95 in	HA 24 in
W 25.51 in	HD1 17.72 in	HD 24.47 in	HB 78 in
X 13.78 in	S 9.06 in	HO 35.88 in	HE2 22 in
HF1 68 in	HP 5 in	HM (max) 37.71 in	GP 0.5 in
HF2 34 in	HQ 3 in	VH 11.42 in	FP 0.5 in
HG 6.75 in	HR 5.01 in	DP 0.5 in	VP 0.5 in
HH 1 in	HC (max) 96.23 in	DP1 0.75 in	Total Weight 1,805.65 lb
DF-ND 5 in	DF-BC 9.25 in	SF-BC 13 in	Weight (Motor) 3,649 lb
SF-ND 8 in	DF-OD 11 in	SF-OD 15 in	
DF-T 1.38 in	DF-HQ 8 in	SF-HQ 12 in	
SF-T 1.63 in	DF-HH 0.875 in	SF-HH 1 in	

Company	PFC Equipment
Contact	Kelly Kresa
Phone No.	7633915856
Email	kkresa@pfcequip.com