



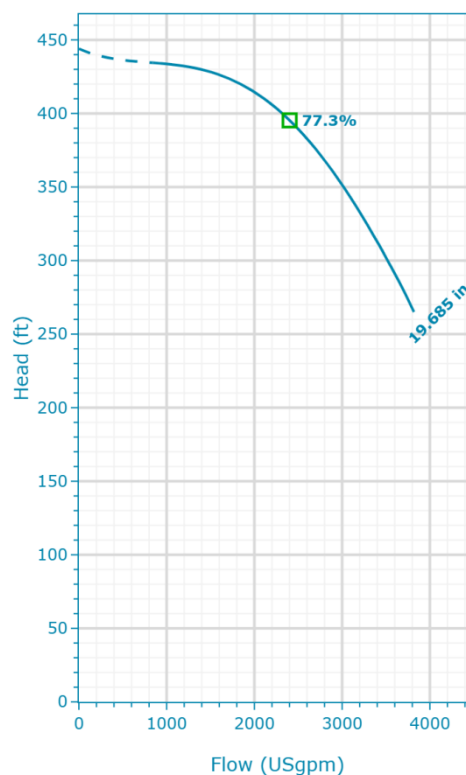
**EXC6X8X21-400H6D4NTS-
WA2NDFG4AFB**

Created On: 8/5/25

eXC6x8x21-400H6D4NTS-WA2NDFG4AFB | Configuration Summary



e-XC split case double suction centrifugal pump provides high flows at high efficiencies with a broad range of materials and configurations to serve the most demanding industrial needs.



PUMP

Installation	Pump Size
Complete Pump	6 x 8 x 21
	Shaft Diameter
	2.6 in
	Max Allowable Working Pressure
	400 psi

MATERIALS

Casing	Shaft
Ductile Iron	Alloy Steel 4140
Casing Wear Ring	Shaft Construction
Bronze C90300	Dry (Seal on Sleeve)
Impeller and Impeller Wear Ring	Shaft Sleeve
Stainless Steel CF8 (304)	Stainless Steel CF8 (304)
Impeller Key	NSF 61 Certified
C45 Medium Carbon Steel (GB 699-88)	Yes
Seal Flush Lines	ScotchKote 134 Coating
Stainless Steel CF8 (304)	No

SEAL

Vendor	Rotating Face
Roplan	Carbon
Type of Seal	Stationary Face
Metal Pusher Seals	Silicon Carbide
Model	Elastomers
MR3	EPDM
Diameter	Metal Components
3.63 in	Stainless Steel CF8M (316)

STANDARD OPTIONS

MOTOR

Vendor	Power
Baldor	400 hp
Frequency (Hz)	Phase (~)
60	3
Poles	Voltage
4	460 V
Enclosure	Insulated Bearing
TEPE	No
Frame Size	Thermostat
449T	No
	50° C Ambient
	No
	Shaft Grounding Ring
	No
	Space Heater
	No
	Others - Not Listed
	No
	Sizing Method
	Max Shaft Power Across Curve
	Service Factor
	1.15
	Allow Service Factor Usage
	No
	Upsize
	No

BASEPLATE

FLANGE

Project:
eXC6x8x21-400H6D4NTS-
WA2NDFG4AFB

Created By:
Kelly Kresa

Created On:
8/5/25

Last Update:
-

Pump Rotation Clockwise	Shaft Material Certification No
Bearing Bracket Grease Lubricated	Shaft Sleeve Material Certification No
Motor Mounting Xylem To Supply & Mount Motor	Impeller Material Certification No
Baseplate Options Grouted	Casing Material Certification No
Impeller Balancing ANSI G6.3	Others Material Certification No
Hydrostatic Test Standard	Temperature Sensor No
Performance Test No Performance Test	Vibration Sensor No
Acceptance Grade Manufacturer's Standard	Pressure Sensor No
	Paint Standard Paint (Blue)
	Language Of Destination English

Flange Name
ANSI - CL250#

COUPLING

Coupling Type Non Spacer	Coupling Vendor TB Woods Duraflex
Spacer Length 0.5 in	Coupling Name WE70
Coupling Guard KIT-4	

eXC6x8x21-400H6D4NTS-WA2NDFG4AFB | Product Details

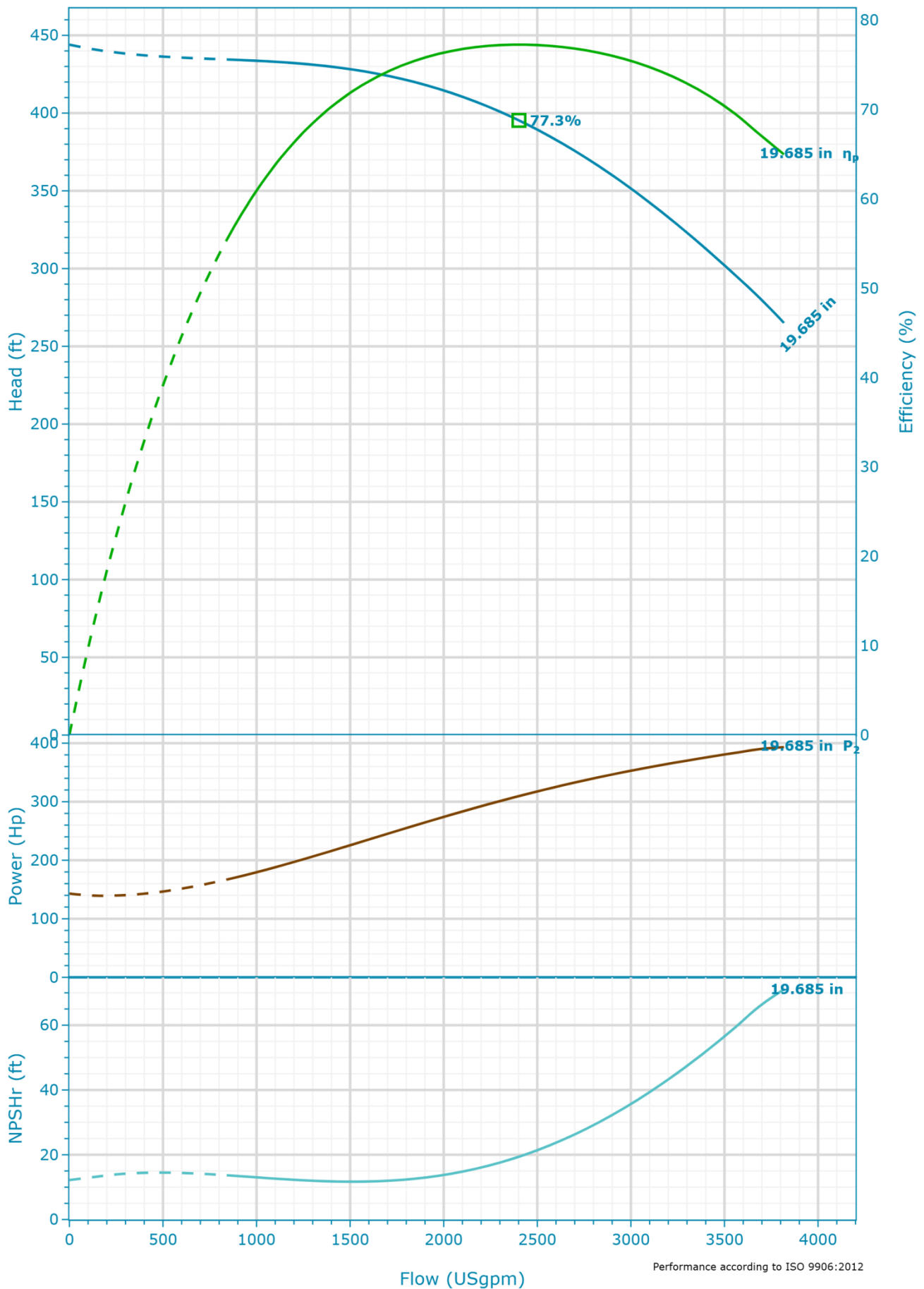
Construction Materials

Other casted components (-)	Gaskets (-)
Cast Iron NO.30	Aramid Fiber
Bolts (-)	Retaining ring (-)
Steel	304 Stainless steel
Pipe Plugs (-)	Shoulder rings (-)
Steel	Steel
O-Rings (-)	Protective Guard (-)
Rubber (FKM)	304 Stainless steel

Motor

Enclosure	Rated Voltage	Phase
TEPE	460 V	3
Speed	Frame Size	Service Factor
1,780 rpm	449T	1.15

eXC6x8x21-400H6D4NTS-WA2NDFG4AFB | Hydraulic Data & Performance Curve



Selection

Series	Acceptance Grade
e-XC	Manufacturer's Standard
Name	System Type
6x8x21 1780rpm	Single Pump
Stages	Operating Pumps
1	1
Frequency	Standby Pumps
60 Hz	No Standby Pump
Impeller Diameters	
1x 19.685"	
Max Impeller Diameter (ref)	
21.339 in	
Min Impeller Diameter (ref)	
9.252 in	

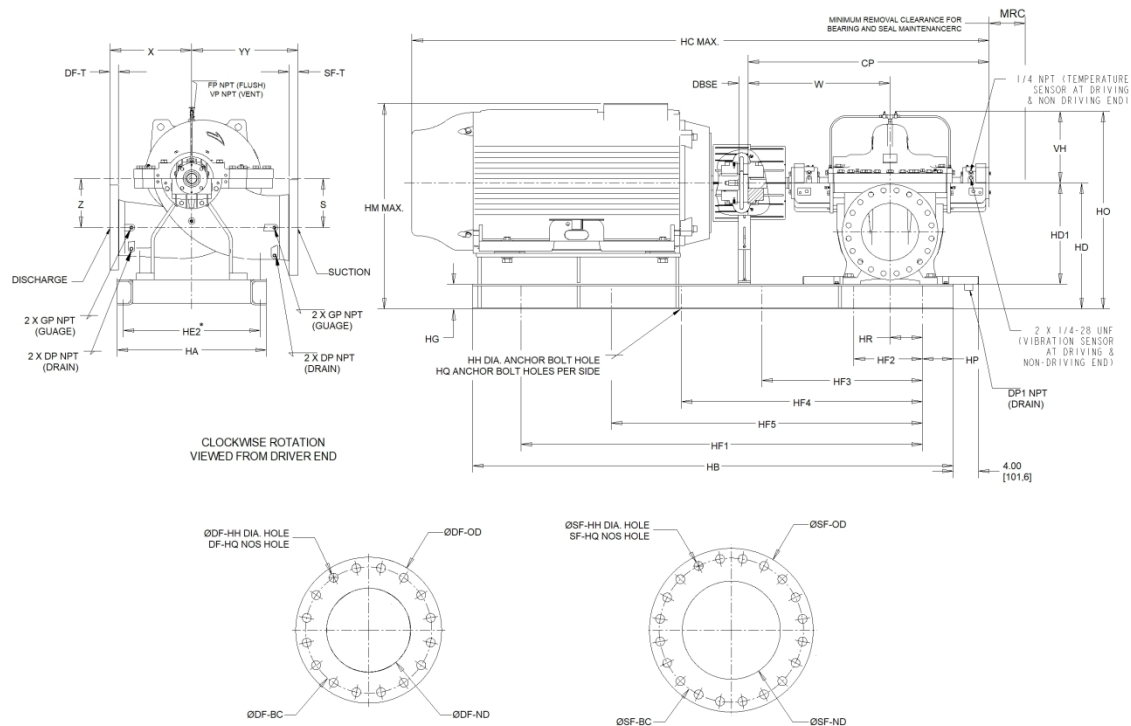
Fluid

Fluid Type	Density
Water	62.428 lb/ft ³
Fluid Temperature	Dynamic Viscosity
39.2 °F	1.567212 cP
Specific Gravity	Fluid Vapor Pressure
1	0.118 psi

Design Curve

Rated Speed	BEP
1,780 RPM	77.3 %
Min Flow	BEP Flow
840.68 USgpm	2,401.93 USgpm
Max Flow	BEP Head
3,817.91 USgpm	395.31 ft
H@QMin	Max Operating Pressure
434.48 ft	192.21 psi
H@QMax	Max P2
265.07 ft	393.16 Hp

eXC6x8x21-400H6D4NTS-WA2NDFG4AFB | Dimensional Data & Drawing



Dimensions

Suction 8 in	CP 52.54 in	YY 23.62 in	DBSE 0.5 in
Discharge 6 in	Z 11.81 in	MRC 3.54 in	HA 32 in
W 29.25 in	HD1 21.66 in	HD 25.66 in	HB 96 in
X 19.69 in	S 11.81 in	HO 42.71 in	HE2 30 in
HF1 86 in	HG 4 in	HR 10.09 in	DP 0.5 in
HF2 21.5 in	HH 1 in	HC (max) 106.28 in	DP1 0.75 in
HF3 43 in	HP 5 in	HM (max) 38.9 in	GP 0.5 in
HF4 64.5 in	HQ 5 in	VH 17.05 in	FP 0.5 in
VP 0.5 in	DF-T 1.44 in	DF-HQ 12 in	SF-HQ 12 in
Total Weight 2,701.22 lb	SF-T 1.63 in	DF-HH 0.875 in	SF-HH 1 in
DF-ND 6 in	DF-BC 10.625 in	SF-BC 13 in	Weight (Motor) 3,701 lb
SF-ND 8 in	DF-OD 12.5 in	SF-OD 15 in	

Company	PFC Equipment
Contact	Kelly Kresa
Phone No.	7633915856
Email	kkresa@pfcequip.com