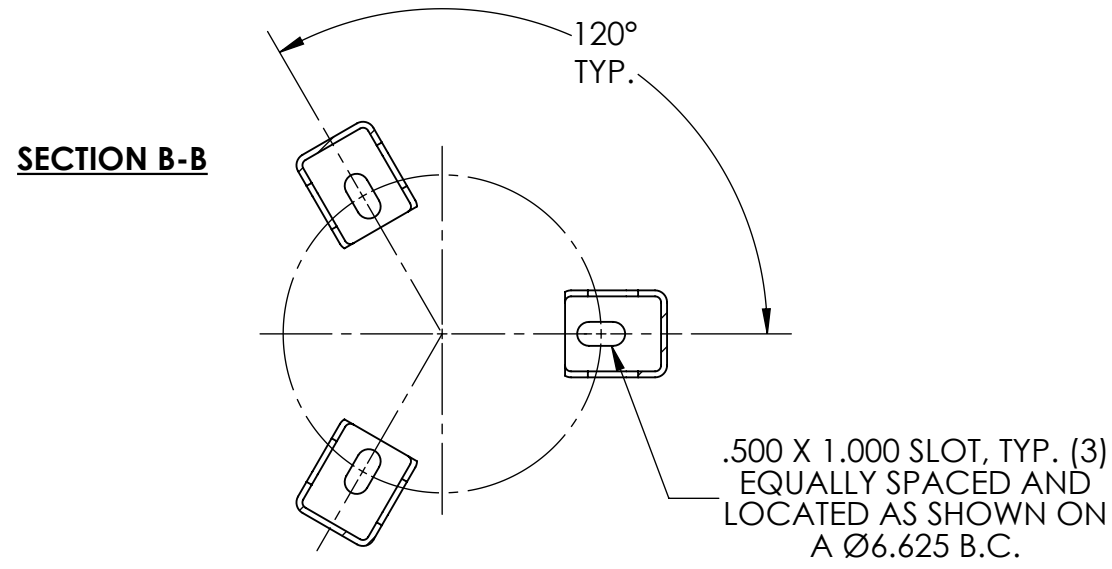
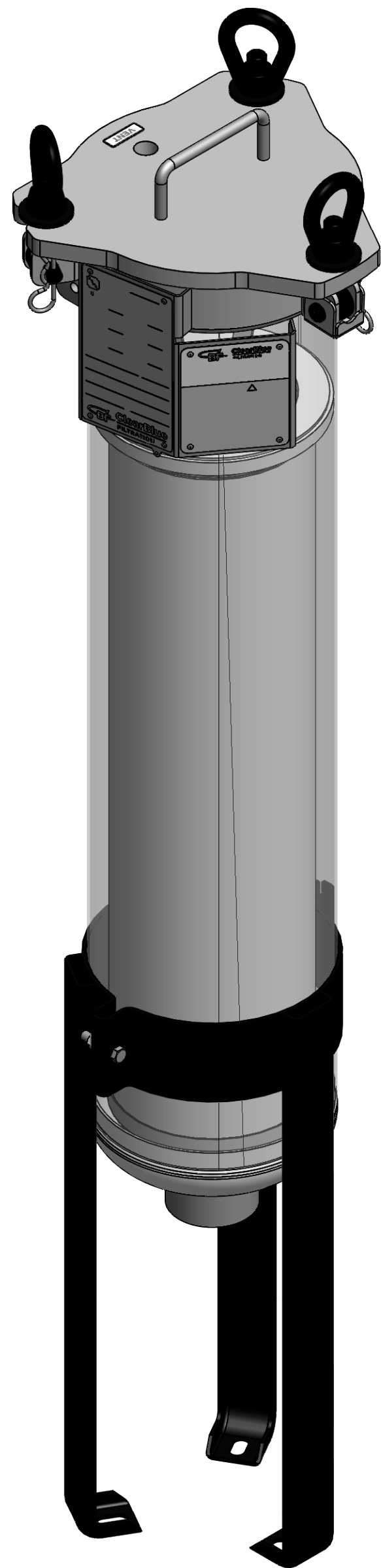
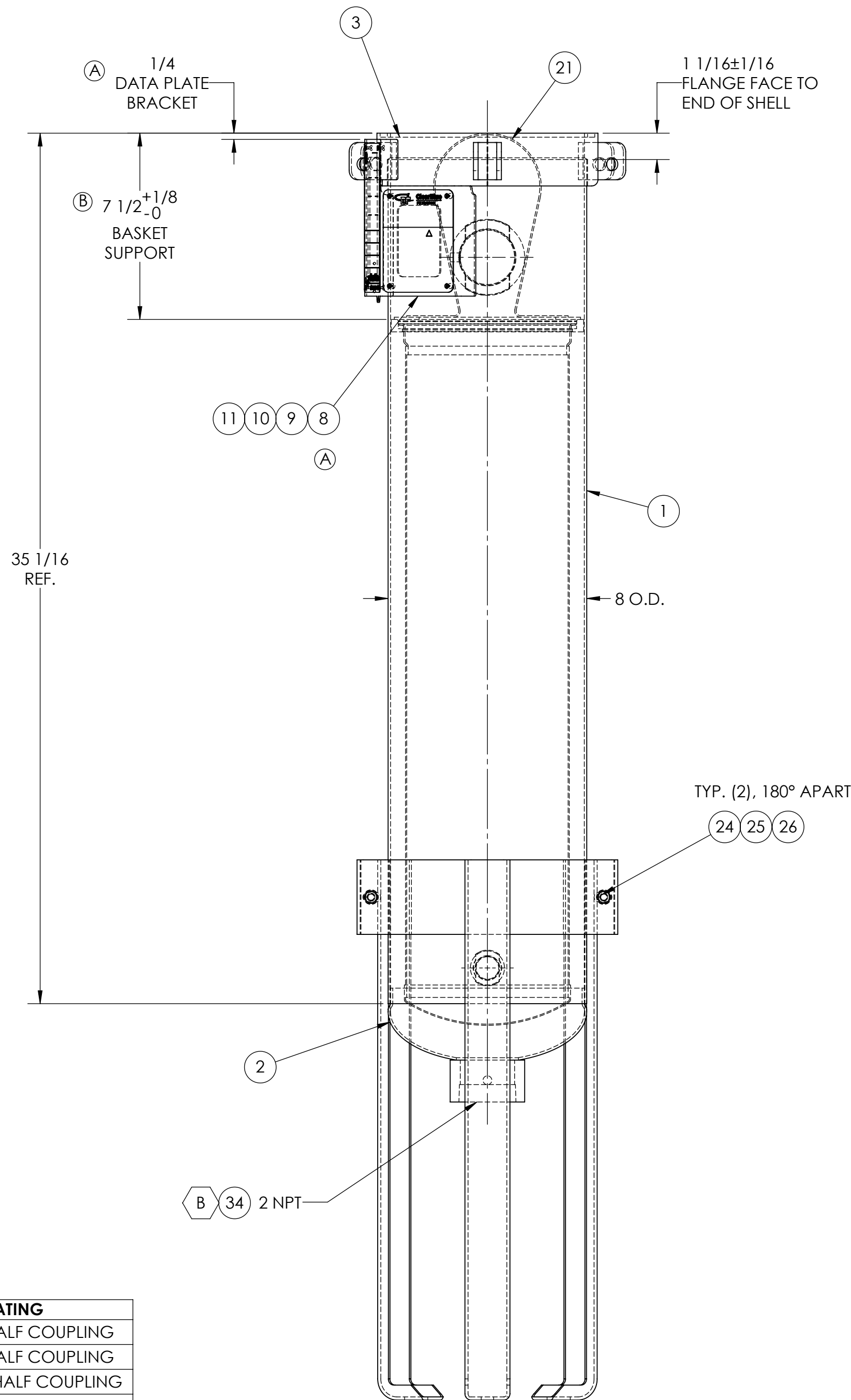
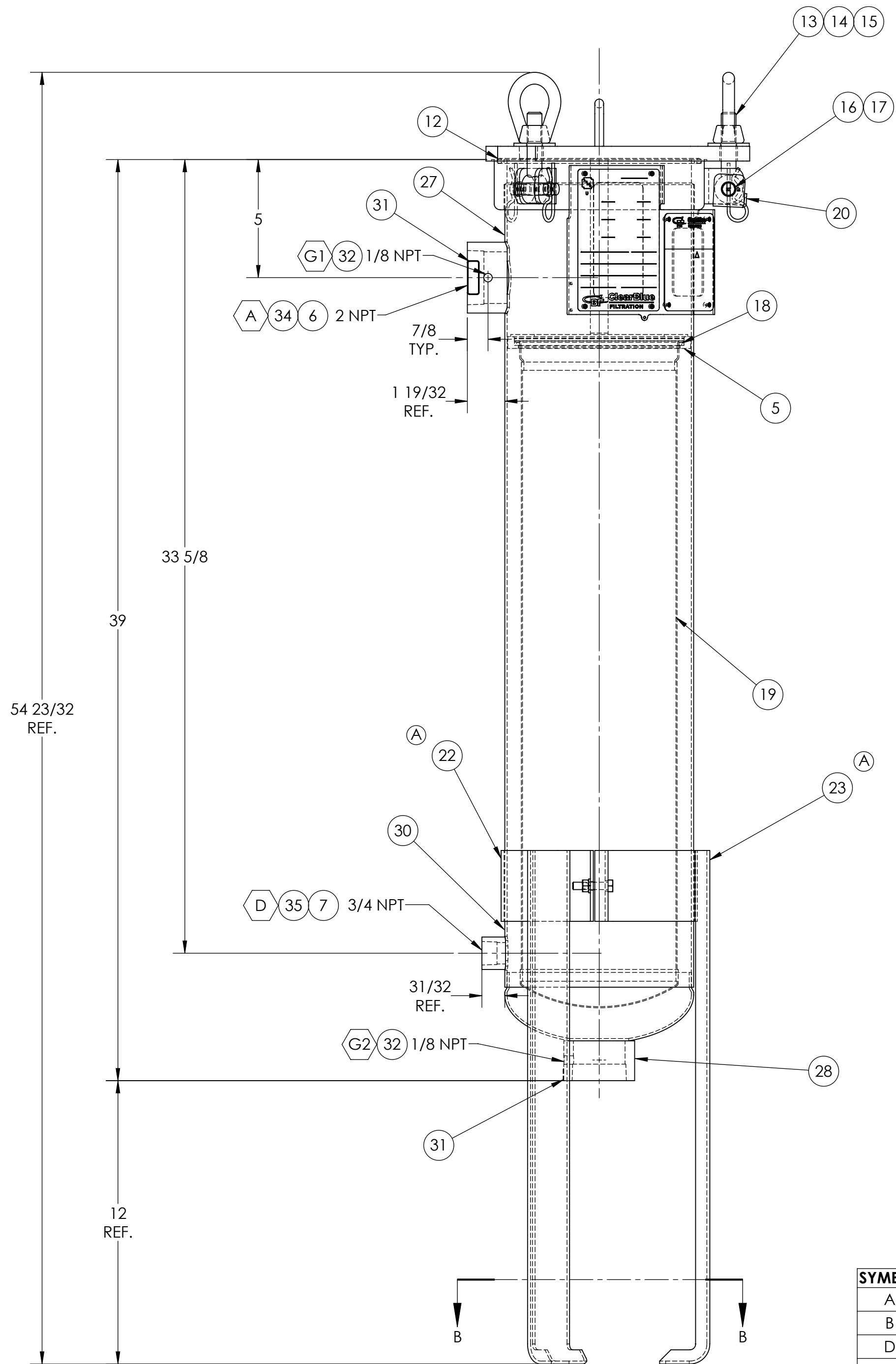


- NOTE:
1. VESSEL IS MFD. IN ACCORDANCE WITH THE ASME BOILER AND PRESSURE VESSEL CODE, SECT. VIII, DIV. 1, LATEST ED. AND IS REGISTERED WITH NATIONAL BOARDS.
 2. MATERIAL: SHELL: SA 414 GR. G, .099 NOM. THK.
BOTTOM HEAD: SA 414 GR. G, .094 MIN. THK.
COVER PLATE: SA 516 GR. 70, .625 NOM., .530 MIN. THK.
 3. MAWP: 150 PSI. HYDRO TEST AT 195 PSI.
 4. DESIGN TEMP: -20° F MIN., 500° F MAX.
 5. SEE DETAILED "BILL OF MATERIALS" FOR COMPLETE MATERIAL SPECS.
 6. UNLESS OTHERWISE NOTED, HOLD ALL THREADED FITTINGS TO THEIR CENTERLINE WITHIN 3/8" IN 12".
 7. VESSEL IS TO BE CLEAN, DRY, AND FREE OF ANY WELD SLAG, SPATTER, OR FOREIGN MATERIAL INSIDE AND OUT.
 8. FINISH:
 1. NO BLAST REQUIRED.
 2. WIPE VESSEL DOWN WITH ACETONE PRIOR TO PAINTING.
 3. MASK OFF INTERNAL FACE OF LID PRIOR TO PAINTING.
 4. PAINT EXTERIOR ONLY WITH AUE 280 CBF BLUE (PANTONE 2995C).
 9. CORROSION ALLOWANCE = 0. NO RADIOGRAPHY.
 10. VESSEL IS EXEMPT FROM IMPACT TESTING PER UG-20(f) AND UCS-66.
 11. NOM. CAPACITY: 7.72 GALLONS. 1.03 CU. FT.
 12. ESTIMATED DRY WEIGHT: 73 LBS.
 13. HARDWARE IS BLACK ZINC PLATED.
 14. WRAP PIPE PLUGS WITH TEFLON TAPE AND PLACE IN A BAG IN VESSEL FOR SHIPMENT.
 15. LIGHTLY COAT THE INTERIOR OF THE VESSEL WITH VEGETABLE OIL.
 16. **ALL MODES OF FABRICATION TO BE FREE OF SILICONE.**
 17. AUST. REG. NO.: PV 6-217661/17.



| ITEM | DESCRIPTION | QTY |
|------|---|-----|
| 1 | SHELL, 414 GR. G | 1 |
| 2 | HEAD ASSEMBLY, 8, 2:1, 2 NPT, FS 21718 | 1 |
| 3 | FLANGE RING ASSEMBLY, 7.813, CS | 1 |
| 4 | COVER PLATE ASSEMBLY, CS | 1 |
| 5 | BASKET SUPPORT, 316/L | 1 |
| 6 | CPLING, HALF, 2 NPT, W/ 1/8 NPT IN SIDE | 1 |
| 7 | CPLING, HALF, 3/4 NPT, 3000#, SA 105 | 1 |
| 8 | DATA PLATE BRACKET | 1 |
| 9 | CBF NAMEPLATE, WARNING | 1 |
| 10 | CBF DATA PLATE | 1 |
| 11 | POP RIVET, 3/32", SST | 8 |
| 12 | O-RING, VITON | 1 |
| 13 | EYE BOLT, 5/8-11 NC, CS, BLACK | 3 |
| 14 | EYE NUT, 5/8-11 UNC, CS, BLACK | 3 |
| 15 | WASHER, FLAT, 5/8, CS, BLACK | 3 |
| 16 | CLEVIS PIN, 1/2 DIA, CS, BLACK | 3 |
| 17 | BRIDGE PIN, ELECTROPOLISHED | 3 |
| 18 | O-RING, VITON | 1 |
| 19 | BASKET ASSEMBLY, 316 SST | 1 |
| 20 | HINGE STOP BRACKET | 1 |
| 21 | OMEGA SPRING ASSEMBLY, ELECTROPOLISHED | 1 |
| 22 | LEG ASSEMBLY, FRONT, BLACK | 1 |
| 23 | LEG ASSEMBLY, REAR, BLACK | 1 |
| 24 | BOLT, 5/16-18 X 1 1/2 LG, HHCS, GR 2 | 2 |
| 25 | NUT, HEX, 5/16-18, GR 2 | 2 |
| 26 | WASHER, LOCK, 5/16, M/S CARBON STL | 2 |
| 27 | DECAL, INLET | 1 |
| 28 | DECAL, OUTLET | 1 |
| 29 | DECAL, VENT | 1 |
| 30 | DECAL, DRAIN | 1 |
| 31 | DECAL, GAUGE | 2 |
| 32 | 1/8 NPT PLASTIC PLUG | 2 |
| 33 | 1/2 NPT PLASTIC PLUG | 1 |
| 34 | 2 NPT PLASTIC PLUG | 2 |
| 35 | 3/4 NPT PLASTIC PLUG | 1 |
| 36 | PIPE PLUG, 1/8 NPT, HEX HEAD, SA 105 | 2 |
| 37 | 1/2 NPT HEX HEAD PIPE PLUG | 1 |
| 38 | PIPE PLUG, 3/4 NPT, HEX HEAD, SA 105 | 1 |

THIS DOCUMENT CONTAINS INFORMATION THAT IS CONFIDENTIAL AND PROPRIETARY TO CLEAR BLUE FILTRATION ("CBF"). THIS DOCUMENT IS FURNISHED ON THE UNDERSTANDING THAT THE DOCUMENT AND THE INFORMATION IT CONTAINS WILL NOT BE COPIED OR DISCLOSED TO OTHERS EXCEPT WITH THE WRITTEN CONSENT OF CBF. WILL NOT BE USED FOR ANY PURPOSE OTHER THAN CONDUCTING BUSINESS WITH CBF AND WILL BE RETURNED AND ALL FURTHER USE DISCONTINUED UPON REQUEST BY CBF. COPYRIGHT CLEAR BLUE FILTRATION. YEAR OF COPYRIGHT IS THE FIRST YEAR INDICATED ON THIS DOCUMENT. ALL RIGHTS RESERVED.

| | | | | | |
|------------------------------|----------------------|--------|---------|----------------|----------------|
| TOLERANCES (EXCEPT AS NOTED) | SHEET | 1 OF 1 | SCALE | DRAWN BY | Dathan Havins |
| DECIMAL | CUSTOMER INFORMATION | 1:125 | 1:4 | APPROVED BY | John H. Miller |
| FRACTIONAL | TITLE | 11/8 | ANGULAR | DATE | 03/24/2017 |
| | | | | DRAWING NUMBER | BH-0839-0021 |

| | | | | | |
|-----|------------|-------|---|----|----|
| B | 2/2/2018 | 14064 | ADDED AUST. REG. NO. AND WAS 7" TO BASKET SUPPORT | DH | JM |
| A | 10/25/2017 | 13989 | WAS QTY. 1. CHANGE BRACKET, ADDED NOTE 15, AND WAS SINGLE LEG | DH | JM |
| SYM | DATE | ECN | DESCRIPTION | BY | CK |

| SYMBOL | SERVICE | SIZE RATING |
|--------|---------|------------------------------|
| A | INLET | 2 NPT, 3000# HALF COUPLING |
| B | OUTLET | 2 NPT, 3000# HALF COUPLING |
| D | DRAIN | 3/4 NPT, 3000# HALF COUPLING |
| V | VENT | 1/2 NPT, DRILL AND TAP |
| G1 | GAUGE | 1/8 NPT, DRILL AND TAP |
| G2 | GAUGE | 1/8 NPT, DRILL AND TAP |