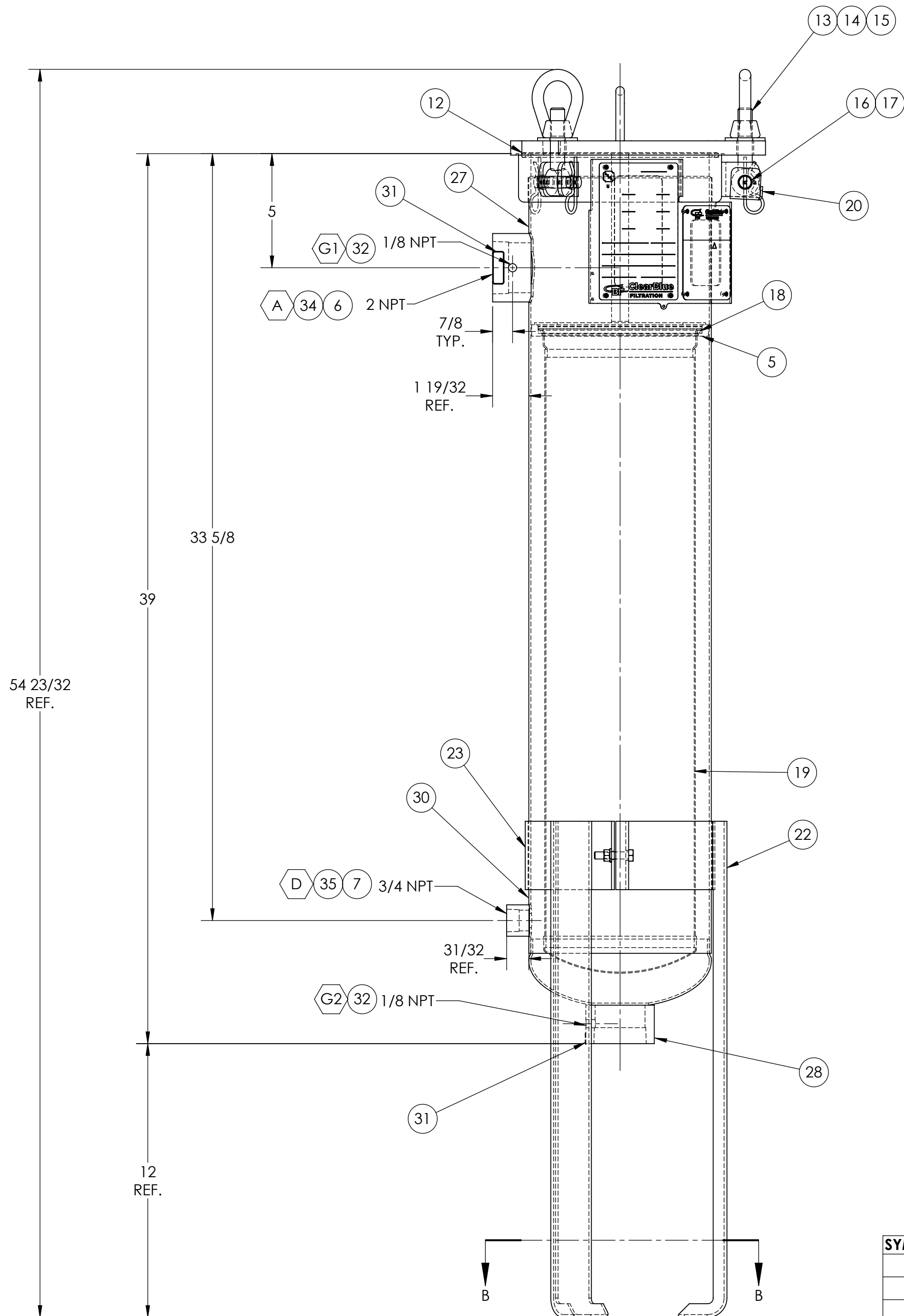
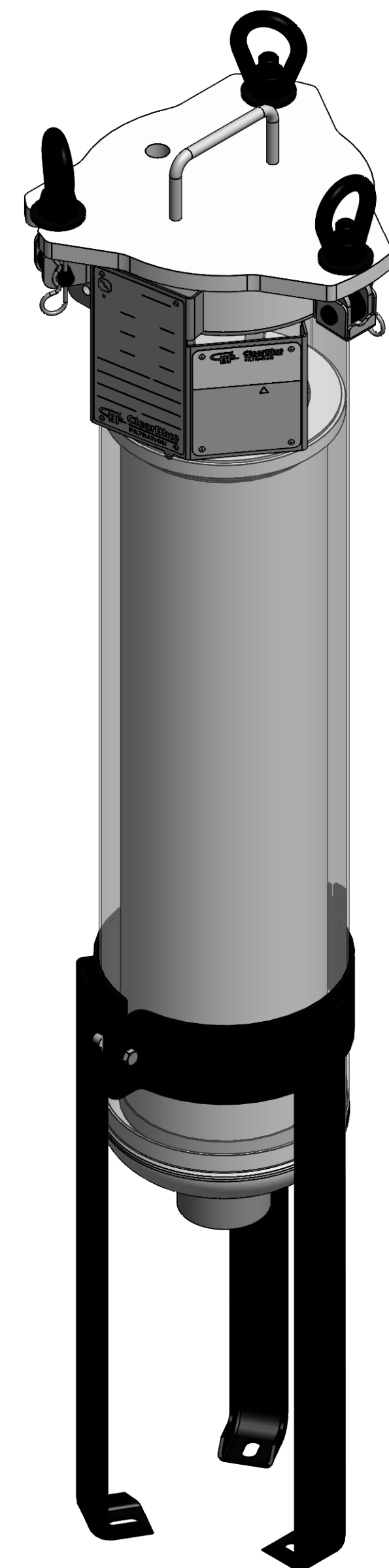
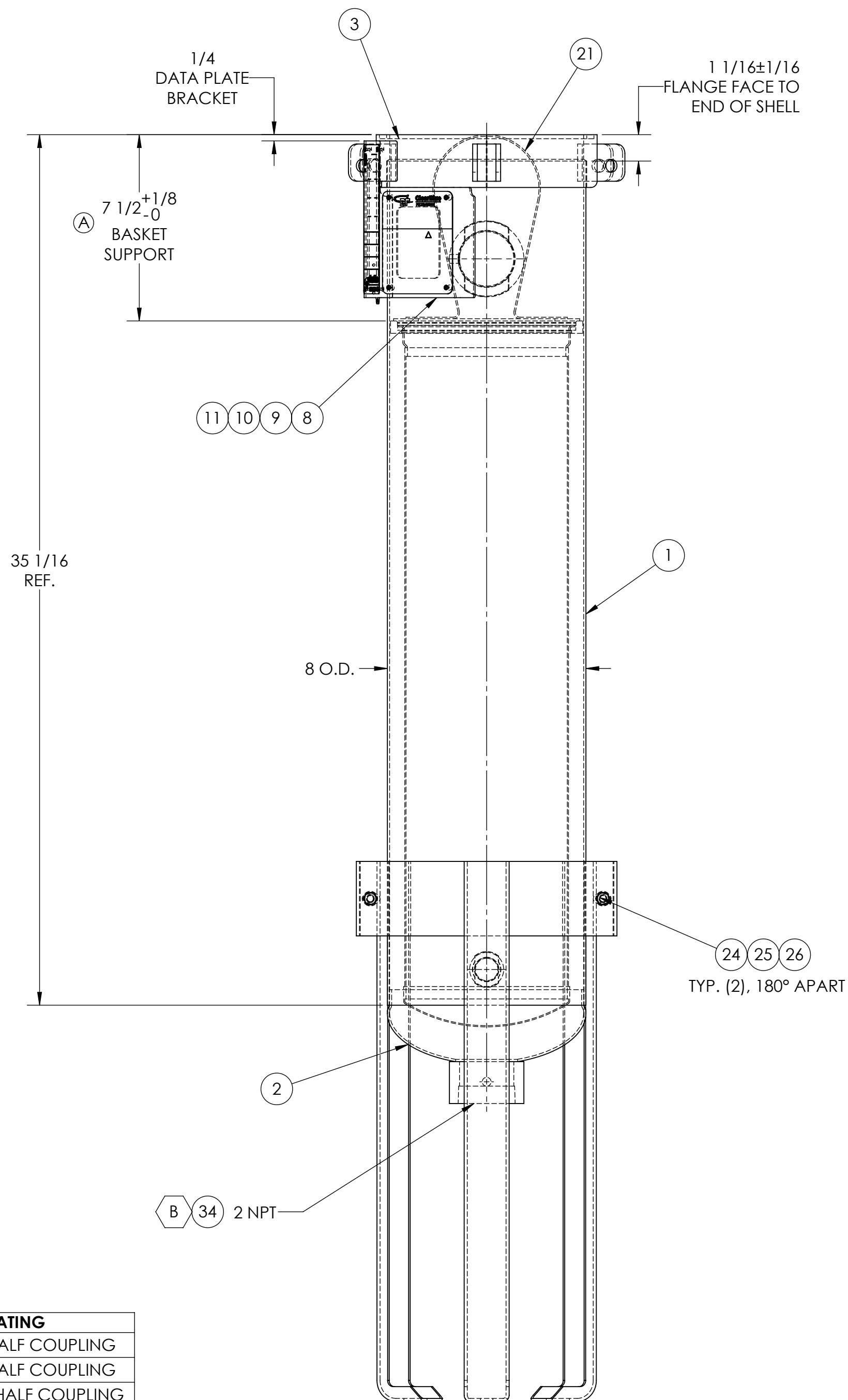


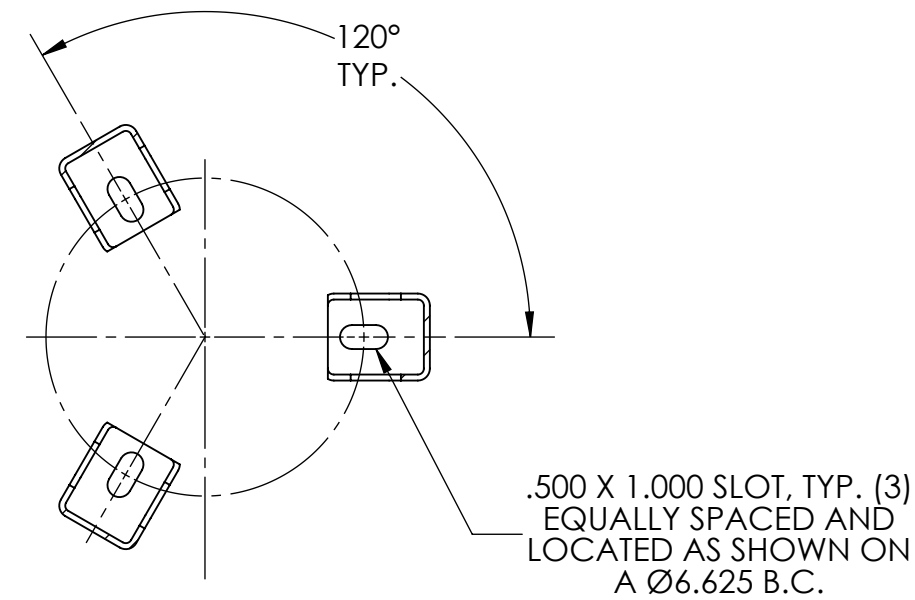
- NOTE:
1. VESSEL IS MFD. IN ACCORDANCE WITH THE ASME BOILER AND PRESSURE VESSEL CODE, SECT. VIII, DIV. 1, LATEST ED. AND IS REGISTERED WITH NATIONAL BOARDS.
 2. MATERIAL: SHELL: SA 240 GR. 316/316L, .090 NOM. THK. (A)
BOTTOM HEAD: SA 240 GR. 316/316L, .072 MIN. THK.
COVER PLATE: SA 240 GR. 304/304L, .625 NOM., .559 MIN. THK.
 3. INT. MAWP: 150 PSI. HYDRO TEST AT 223 PSI.
EXT. MAWP: 15 PSI.
 4. DESIGN TEMP: -20° F MIN. 500° F MAX.
 5. SEE DETAILED "BILL OF MATERIALS" FOR COMPLETE MATERIAL SPECS.
 6. UNLESS OTHERWISE NOTED, HOLD ALL THREADED FITTINGS TO THEIR CENTERLINE WITHIN 3/8" IN 12".
 7. VESSEL IS TO BE CLEAN, DRY, AND FREE OF ANY WELD SLAG, SPATTER, OR FOREIGN MATERIAL INSIDE AND OUT.
 8. FINISH:
 1. GLASS BEAD BLAST INTERIOR AND EXTERIOR OF VESSEL.
 9. CORROSION ALLOWANCE = 0. NO RADIOGRAPHY.
 10. VESSEL IS EXEMPT FROM IMPACT TESTING PER UHA-51(d).
 11. NOM. CAPACITY: 7.29 GALLONS. .97 CU. FT.
 12. ESTIMATED DRY WEIGHT: 83 LBS.
 13. HARDWARE IS BLACK ZINC PLATED.
 14. WRAP PIPE PLUGS WITH NICKEL IMPREGNATED TEFLON TAPE AND PLACE IN A BAG IN VESSEL FOR SHIPMENT.
 15. **ALL MODES OF FABRICATION TO BE FREE OF SILICONE.**
 - (A) 16. AUST. REG. NO.: PV 6-217672/17



SYMBOL	SERVICE	SIZE RATING
A	INLET	2 NPT, 3000# HALF COUPLING
B	OUTLET	2 NPT, 3000# HALF COUPLING
D	DRAIN	3/4 NPT, 3000# HALF COUPLING
V	VENT	1/2 NPT, DRILL AND TAP
G1	GAUGE	1/8 NPT, DRILL AND TAP
G2	GAUGE	1/8 NPT, DRILL AND TAP




SECTION B-B



ITEM	DESCRIPTION	QTY
1	SHELL, 240-316/L	1
2	HEAD ASSEMBLY, 8, 2:1, 2 NPT, FS 49752	1
3	FLANGE RING ASSEMBLY, 7.813, SS	1
4	COVER PLATE ASSEMBLY, SS	1
5	BASKET SUPPORT, 316/L	1
6	CPLING, HALF, 2 NPT, W/ 1/8 NPT IN SIDE	1
7	CPLING, HALF, 3/4 NPT	1
8	DATA PLATE BRACKET	1
9	CBF NAMEPLATE, WARNING	1
10	CBF DATA PLATE	1
11	POP RIVET, 3/32", SST	8
12	O-RING, VITON	1
13	EYE BOLT, 5/8-11 NC, CS, BLACK	3
14	EYE NUT, 5/8-11 UNC, CS, BLACK	3
15	WASHER, FLAT, 5/8, CS, BLACK	3
16	CLEVIS PIN, 1/2 DIA., CS, BLACK	3
17	BRIDGE PIN, 1/8, ELECTROPOLISHED	3
18	O-RING, VITON	1
19	BASKET ASSEMBLY, 316 SST	1
20	HINGE STOP BRACKET	1
21	OMEGA SPRING ASSEMBLY, ELECTROPOLISHED	1
22	LEG ASSEMBLY, REAR, BLACK	1
23	LEG ASSEMBLY, FRONT, BLACK	1
24	BOLT, 5/16-18, HHCS, GR 2	2
25	NUT, HEX, 5/16-18, GR 2	2
26	WASHER, LOCK, 5/16, M/S CARBON STL	2
27	DECAL, INLET	1
28	DECAL, OUTLET	1
29	DECAL, VENT	1
30	DECAL, DRAIN	1
31	DECAL, GAUGE	2
32	1/8 NPT PLASTIC PLUG	2
33	1/2 NPT PLASTIC PLUG	1
34	2 NPT PLASTIC PLUG	2
35	3/4 NPT PLASTIC PLUG	1
36	PIPE PLUG, 1/8 NPT, HEX HEAD, 316/L SS	2
37	PIPE PLUG, 1/2 NPT, HEX HEAD	1
38	PIPE PLUG, 3/4 NPT, HEX HEAD, 316/L	1

THIS DOCUMENT CONTAINS INFORMATION THAT IS CONFIDENTIAL AND PROPRIETARY TO CLEAR BLUE FILTRATION ("CBF"). THIS DOCUMENT IS FURNISHED ON THE UNDERSTANDING THAT THE DOCUMENT AND THE INFORMATION IT CONTAINS WILL NOT BE COPIED OR DISCLOSED TO OTHERS EXCEPT WITH THE WRITTEN CONSENT OF CBF. WILL NOT BE USED FOR ANY PURPOSE OTHER THAN CONDUCTING BUSINESS WITH CBF AND WILL BE RETURNED AND ALL FURTHER USE DISCONTINUED UPON REQUEST BY CBF. COPYRIGHT CLEAR BLUE FILTRATION. YEAR OF COPYRIGHT IS THE FIRST YEAR INDICATED ON THIS DOCUMENT. ALL RIGHTS RESERVED.

TOLERANCES (EXCEPT AS NOTED)	SHEET	1 OF 1		
DECIMAL	CUSTOMER INFORMATION			SCALE
±.125	CLEAR BLUE FILTRATION		1:4	Dathan Havins
			APPROVED BY	John H. Miller
FRACTIONAL	TITLE			
±1/8	FILTER VESSEL, SS			
ANGULAR	DATE	DRAWING NUMBER		
±1°	10/25/2017	BH-0839-0025		

A	2/2/2018	14064	DUAL RATED AND CHANGED SHELL THICKNESS, WAS 7" FOR BASKET SUPPORT, ADDED AUST. REG. NO., AND CHANGED SHELL MATERIAL	DH	JM
SYM	DATE	ECN	DESCRIPTION	BY	CK