

PROJECT:	UNIT TAG:	QUANTITY:
REPRESENTATIVE:	TYPE OF SERVICE:	DATE:
ENGINEER:	SUBMITTED BY:	DATE:
CONTRACTOR:	APPROVED BY:	DATE:
	ORDER NO.:	DATE:

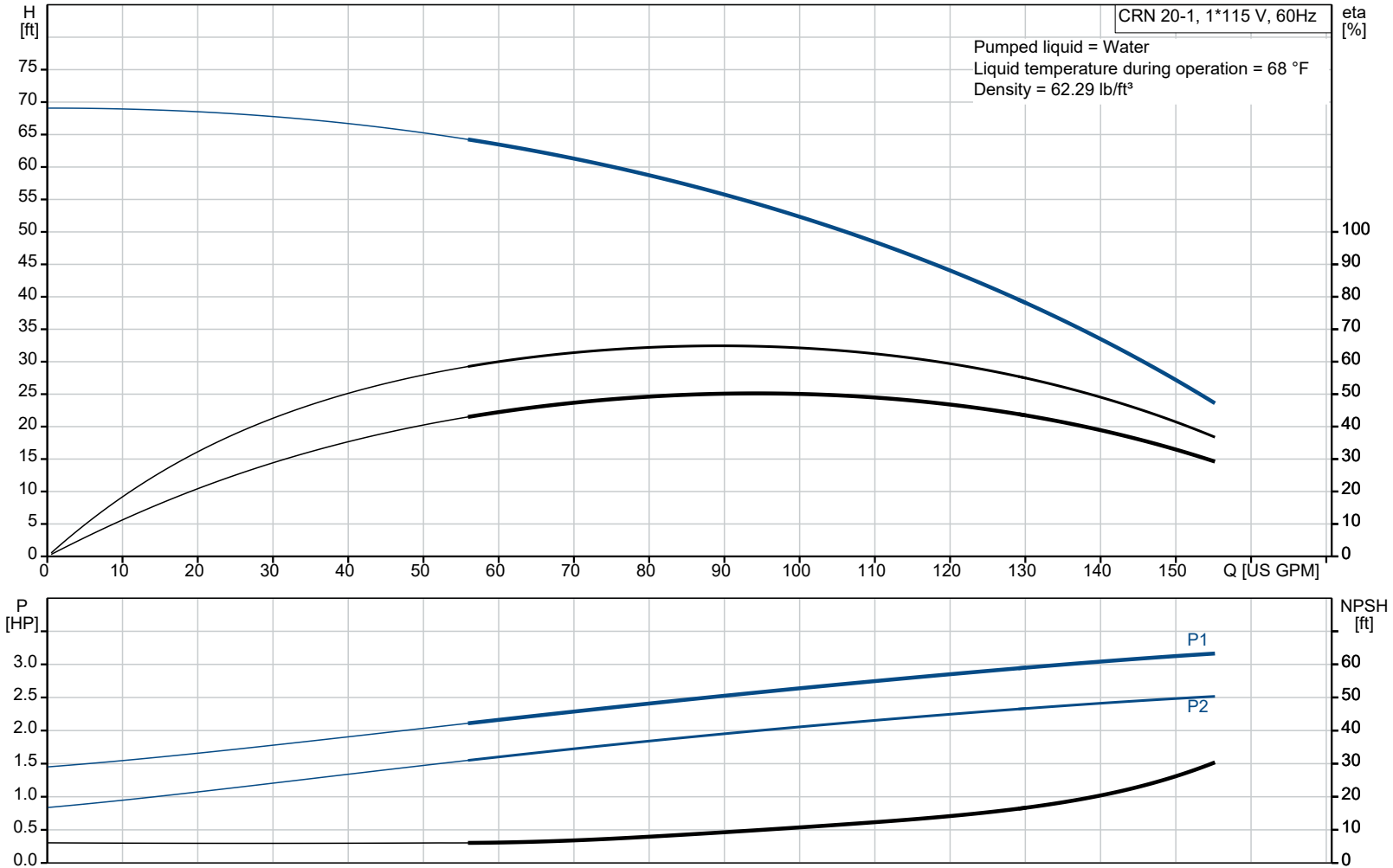


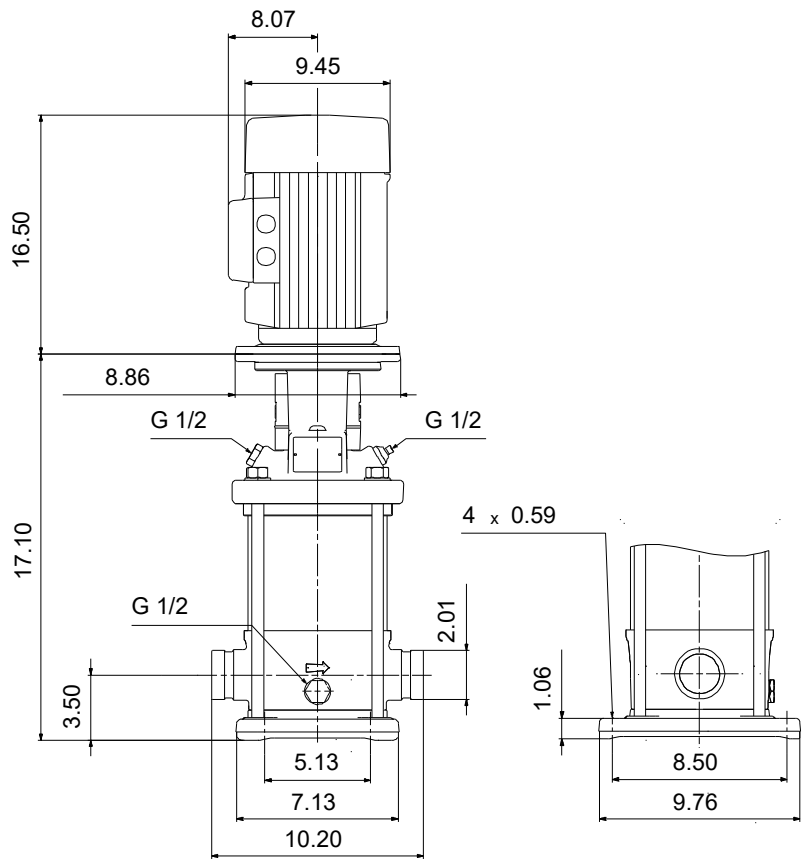
CRN 20-1 A-P-A-E-HQQE

Vertical, multistage centrifugal pump with suction and discharge ports on the same level. Pump materials in contact with the liquid are in high-grade stainless steel (EN 1.4401)


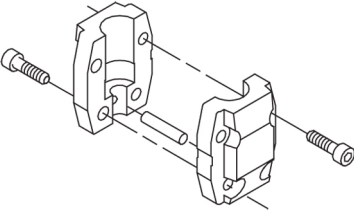
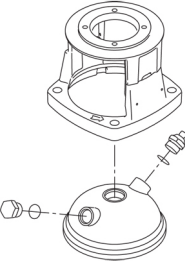
Note! Product picture may differ from actual product

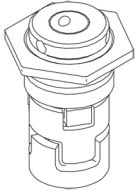
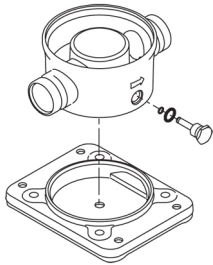
Conditions of Service		Pump Data		Motor Data	
Liquid:	Water	Max pressure at stated temp:	363 psi / 250 °F	Rated power - P2:	3 HP
Temperature:	68 °F	Liquid temperature range:	-4 .. 248 °F	Rated voltage:	115/208-230 V
Specific Gravity:	1.000	Maximum ambient temperature:	104 °F	Mains frequency:	60 Hz
		Shaft seal:	HQQE	Enclosure class:	IP55
		Product number:	99917853	Insulation class:	F
				Motor protection:	PTO
				Motor type:	WEG
				Eta 1/1:	80.0 %





Materials:	
Base:	Stainless steel
Base:	EN 1.4408
Base:	AISI 316
Impeller:	Stainless steel
Impeller:	AISI 316
Impeller:	EN 1.4401
Material code:	A
Code for rubber:	E

Qty.	Description
1	<p>CRN 20-1 A-P-A-E-HQQE</p>  <p>Product No.: 99917853</p> <p>Vertical, multistage centrifugal pump with inlet and outlet ports on same the level (inline). Pump materials in contact with the liquid are in high-grade stainless steel. A cartridge shaft seal ensures high reliability, safe handling, and easy access and service. Power transmission is via a rigid split coupling. Pipe connection is via PJE (Victaulic®) couplings.</p> <p>The pump is fitted with a 1-phase, fan-cooled asynchronous motor.</p> <p>Further product details</p> <p>Steel, cast iron and aluminium components have an epoxy-based coating made in a cathodic electro-deposition (CED) process. CED is a high-quality dip-painting process where an electrical field around the products ensures deposition of paint particles as a thin, well-controlled layer on the surface.</p> <p>An integral part of the process is a pretreatment.</p> <p>The entire process consists of these elements:</p> <ol style="list-style-type: none"> 1) Alkaline-based cleaning. 2) Zinc phosphating. 3) Cathodic electro-deposition. 4) Curing to a dry film thickness 18-22 my m. <p>The colour code for the finished product is NCS 9000/RAL 9005.</p> <p>Pump</p> <p>A standard split coupling connects the pump and motor shaft. It is enclosed in the pump head/motor stool by means of two coupling guards.</p>  <p>The pump head and flange for motor mounting is made in one piece (cast iron). The pump head cover is a separate component (stainless steel). The pump head has a combined 1/2" priming plug and vent screw.</p>  <p>The pump is fitted with a balanced O-ring seal unit with a rigid torque-transmission system. This seal type is assembled in a cartridge unit which makes replacement safe and easy. Due to the balancing, this seal type is suitable for high-pressure applications. The cartridge construction also protects the pump shaft from possible wear from a dynamic O-ring between pump shaft and shaft seal.</p> <p>Seal faces:</p> <ul style="list-style-type: none"> • Rotating seal ring material: silicon carbide (SiC) • Stationary seat material: silicon carbide (SiC)

Qty.	Description																														
1	<p>This material pairing is used where higher corrosion resistance is required. The high hardness of this material pairing offers good resistance against abrasive particles.</p> <p>Secondary seal material: EPDM (ethylene-propylene rubber)</p> <p>EPDM has excellent resistance to hot water. EPDM is not suitable for mineral oils.</p>  <p>The shaft seal is screwed into the pump head.</p> <p>The chambers and impellers are made of stainless-steel sheet. The chambers are provided with a PTFE neck ring offering improved sealing and high efficiency. The impellers have smooth surfaces, and the shape of the blades ensure a high efficiency.</p> <p>The pump has a stainless-steel base mounted on a separate base plate.</p> <p>The base and base plate are kept in position by the tension of the staybolts which hold the pump together.</p> <p>The outlet side of the base has a drain plug.</p> <p>The pump is secured to the foundation by four bolts through the base plate.</p> <p>The base is prepared for connection by means of PJE (Victualic®) couplings.</p>  <p>Motor</p> <p>The motor is a totally enclosed, fan-cooled motor with principal dimensions to IEC and DIN standards. The motor is flange-mounted with tapped-hole flange (FT).</p> <p>Motor-mounting designation in accordance with IEC 60034-7: IM B 14 (Code I) / IM 3601 (Code II).</p> <p>Electrical tolerances comply with IEC 60034.</p> <p>The motor has built-in thermal protection (PTO current and temperature sensors) in accordance with IEC 60034-11 and requires no further motor protection. The protection reacts to both slow- and quick-rising temperatures, e.g. constant overload and stalled conditions.</p> <p>As the thermal protection incorporates automatic reset, the motor must be connected in a way which ensures that the automatic reset cannot cause accidents.</p> <p>Technical data</p> <table> <tr> <td>Liquid:</td><td></td></tr> <tr> <td>Pumped liquid:</td><td>Water</td></tr> <tr> <td>Liquid temperature range:</td><td>-4 .. 248 °F</td></tr> <tr> <td>Selected liquid temperature:</td><td>68 °F</td></tr> <tr> <td>Density:</td><td>62.29 lb/ft³</td></tr> </table> <p>Technical:</p> <table> <tr> <td>Pump speed on which pump data are based:</td><td>3457 rpm</td></tr> <tr> <td>Rated flow:</td><td>111 US GPM</td></tr> <tr> <td>Rated head:</td><td>49.54 ft</td></tr> <tr> <td>Actual impeller diameter:</td><td>4.13 in</td></tr> <tr> <td>Pump orientation:</td><td>Vertical</td></tr> <tr> <td>Shaft seal arrangement:</td><td>Single</td></tr> <tr> <td>Code for shaft seal:</td><td>HQQE</td></tr> <tr> <td>Approvals:</td><td>CURUS</td></tr> <tr> <td>Approvals for drinking water:</td><td>NSF/ANSI 61</td></tr> <tr> <td>Curve tolerance:</td><td>ISO9906:2012 3B</td></tr> </table>	Liquid:		Pumped liquid:	Water	Liquid temperature range:	-4 .. 248 °F	Selected liquid temperature:	68 °F	Density:	62.29 lb/ft³	Pump speed on which pump data are based:	3457 rpm	Rated flow:	111 US GPM	Rated head:	49.54 ft	Actual impeller diameter:	4.13 in	Pump orientation:	Vertical	Shaft seal arrangement:	Single	Code for shaft seal:	HQQE	Approvals:	CURUS	Approvals for drinking water:	NSF/ANSI 61	Curve tolerance:	ISO9906:2012 3B
Liquid:																															
Pumped liquid:	Water																														
Liquid temperature range:	-4 .. 248 °F																														
Selected liquid temperature:	68 °F																														
Density:	62.29 lb/ft³																														
Pump speed on which pump data are based:	3457 rpm																														
Rated flow:	111 US GPM																														
Rated head:	49.54 ft																														
Actual impeller diameter:	4.13 in																														
Pump orientation:	Vertical																														
Shaft seal arrangement:	Single																														
Code for shaft seal:	HQQE																														
Approvals:	CURUS																														
Approvals for drinking water:	NSF/ANSI 61																														
Curve tolerance:	ISO9906:2012 3B																														

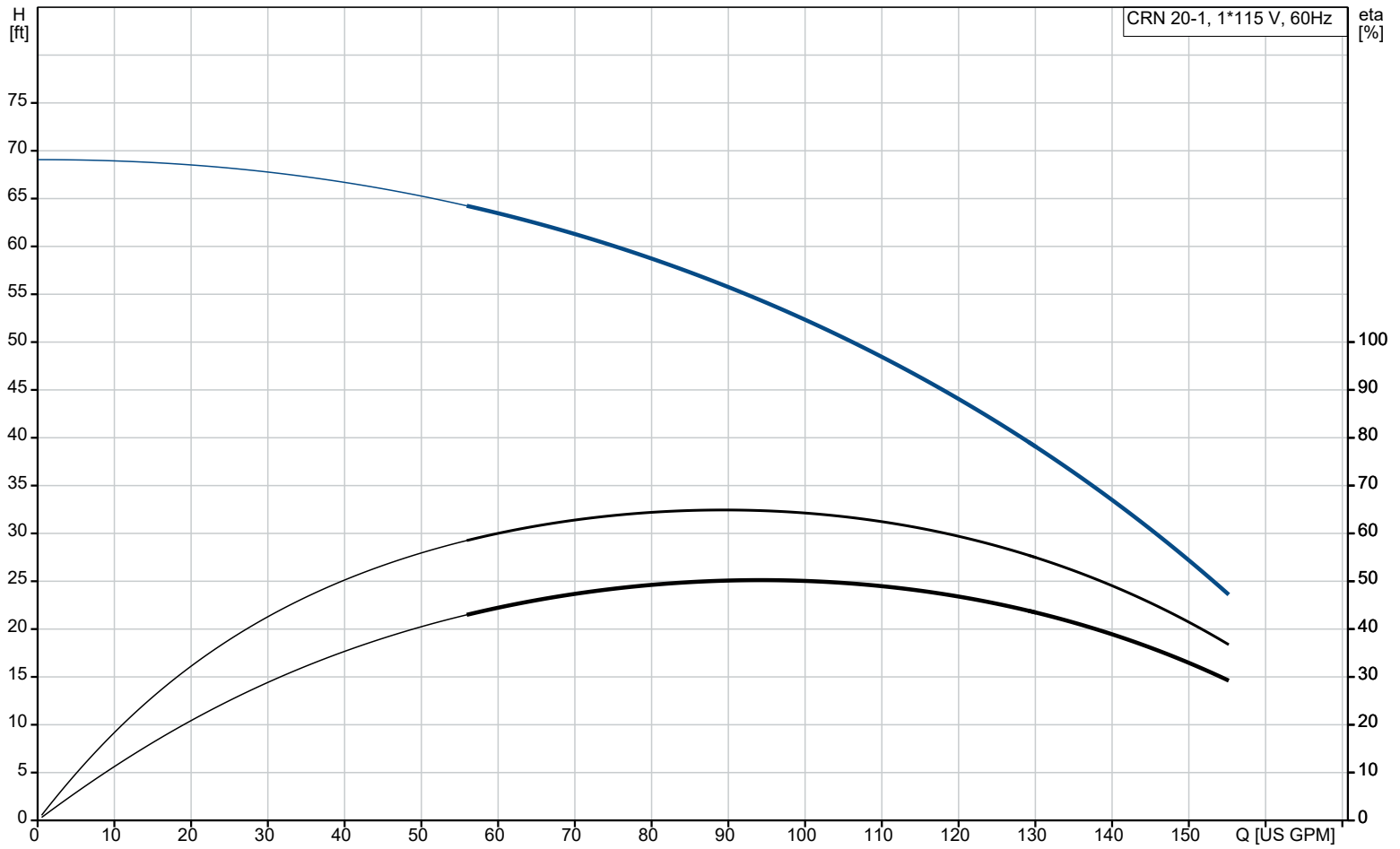


Company name: Specs
Created by:
Phone:

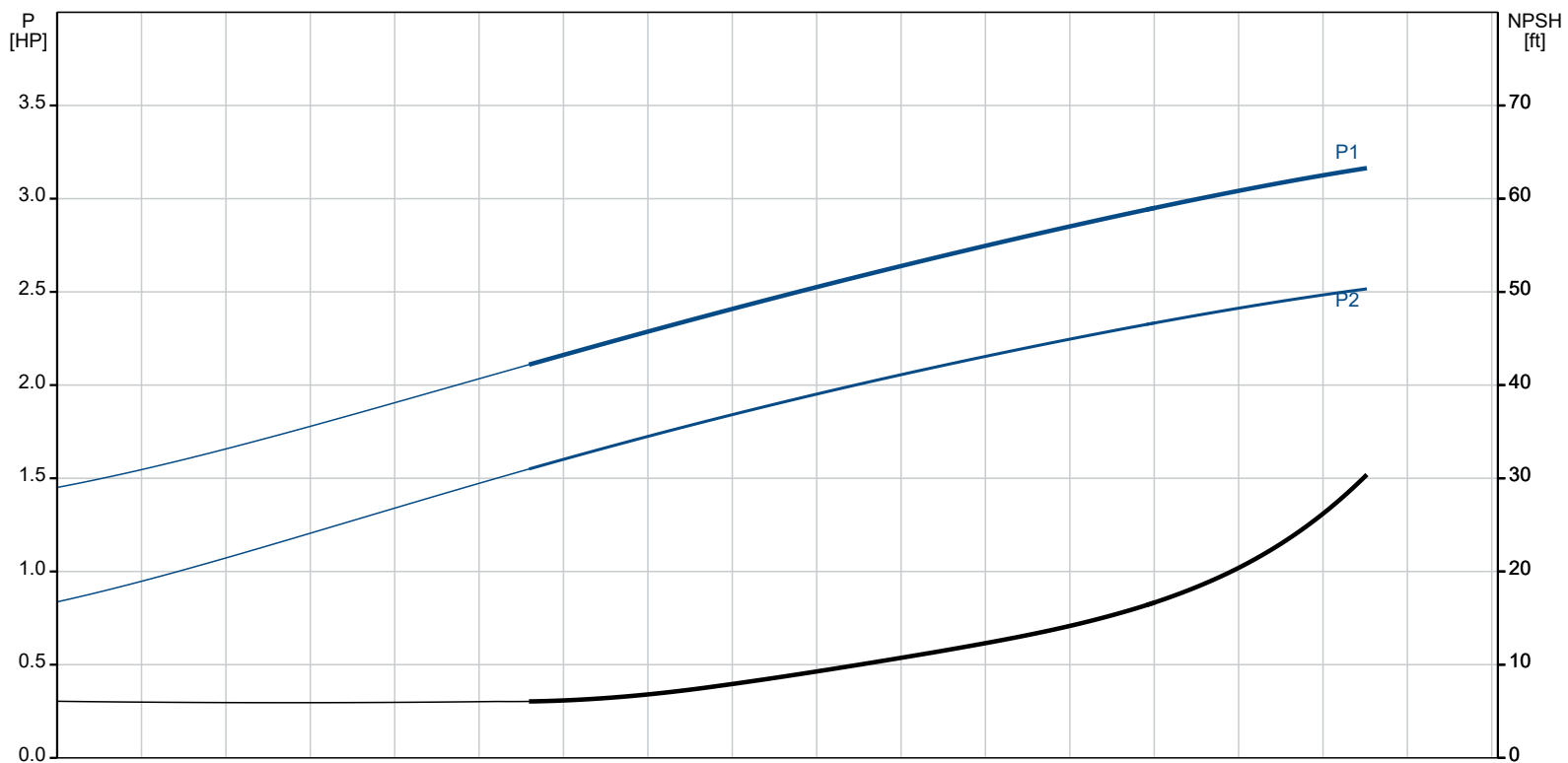
Date: 27/01/2023

Qty.	Description
1	<div>Materials:</div> <div>Base:Stainless steel EN 1.4408 AISI 316</div> <div>Impeller:Stainless steel EN 1.4401 AISI 316</div> <div>Bearing:SIC</div> <div>Installation: t max amb:104 °F Maximum operating pressure:362.59 psi Max pressure at stated temp:363 psi / 250 °F 363 psi / -4 °F</div> <div>Type of connection:PJE Size of inlet connection:DN 50 Size of outlet connection:DN 50 Pressure rating for connection:PN 50 Flange size for motor:182TC</div> <div>Electrical data: Motor standard:NEMA Motor type:WEG Rated power - P2:3 HP Power (P2) required by pump:3 HP Mains frequency:60 Hz Rated voltage:1 x 115/208-230 V Service factor:1.15 Rated current:24,2/19,7-12,1 A Starting current:700-700 % Cos phi - power factor:0.99 Rated speed:3510 rpm Efficiency:80.0% Motor efficiency at full load:80.0 % Motor efficiency at 3/4 load:78.0 % Motor efficiency at 1/2 load:73.0 % Number of poles:2 Enclosure class (IEC 34-5):IP55 Insulation class (IEC 85):F Motor No:99883322</div> <div>Controls: Frequency converter:NONE</div> <div>Others: DOE Pump Energy Index CL:0.91 Net weight:148 lb Gross weight:163 lb Shipping volume:13.1 ft³</div>

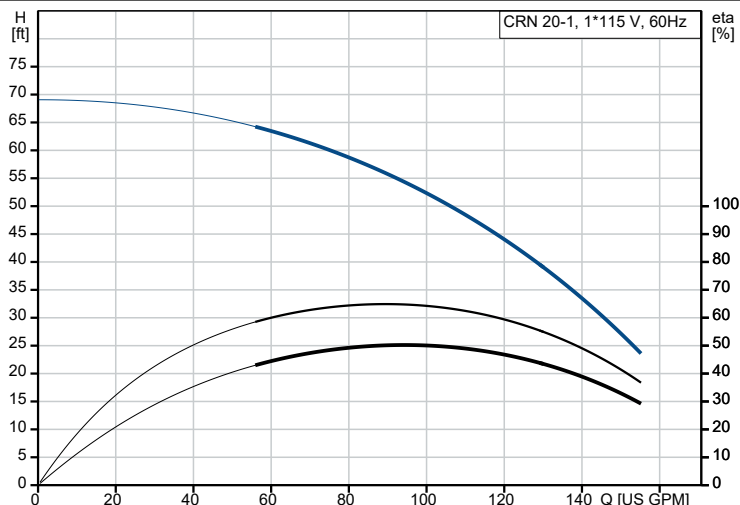
99917853 CRN 20-1 A-P-A-E-HQQE 60 Hz



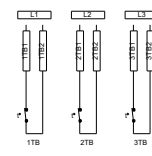
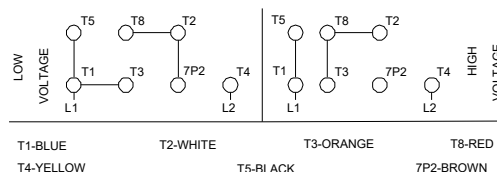
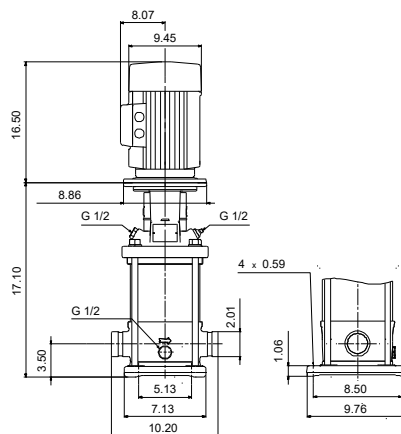
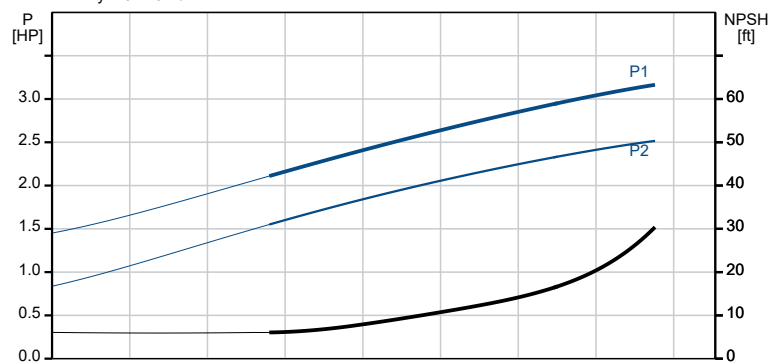
Pumped liquid = Water
Liquid temperature during operation = 68 °F
Density = 62.29 lb/ft³



Description	Value
General information:	
Product name:	CRN 20-1 A-P-A-E-HQQE
Product No:	99917853
EAN number:	5715114126816
Technical:	
Pump speed on which pump data are based:	3457 rpm
Rated flow:	111 US GPM
Rated head:	49.54 ft
Maximum head:	66.93 ft
Actual impeller diameter:	4.13 in
Stages:	2
Impellers:	1
Number of reduced-diameter impellers:	0
Low NPSH:	N
Pump orientation:	Vertical
Shaft seal arrangement:	Single
Code for shaft seal:	HQQE
Approvals:	CURUS
Approvals for drinking water:	NSF/ANSI 61
Curve tolerance:	ISO9906:2012 3B
Pump version:	A
Model:	A
Cooling:	IC 411
Materials:	
Base:	Stainless steel
Base:	EN 1.4408
Base:	AISI 316
Impeller:	Stainless steel
Impeller:	EN 1.4401
Impeller:	AISI 316
Material code:	A
Code for rubber:	E
Bearing:	SIC
Installation:	
t max amb:	104 °F
Maximum operating pressure:	362.59 psi
Max pressure at stated temp:	363 psi / 250 °F
Max pressure at stated temp:	363 psi / -4 °F
Type of connection:	PJE
Size of inlet connection:	DN 50
Size of outlet connection:	DN 50
Pressure rating for connection:	PN 50
Flange size for motor:	182TC
Connect code:	P
Liquid:	
Pumped liquid:	Water
Liquid temperature range:	-4 .. 248 °F
Selected liquid temperature:	68 °F
Density:	62.29 lb/ft³
Electrical data:	
Motor standard:	NEMA
Motor type:	WEG
Rated power - P2:	3 HP
Power (P2) required by pump:	3 HP
Mains frequency:	60 Hz
Rated voltage:	1 x 115/208-230 V
Service factor:	1.15
Rated current:	24,2/19,7-12,1 A
Starting current:	700-700 %
Full load SF current:	27.8/12.1 A
Cos phi - power factor:	0.99



Pumped liquid = Water
Liquid temperature during operation = 68 °F
Density = 62.29 lb/ft³



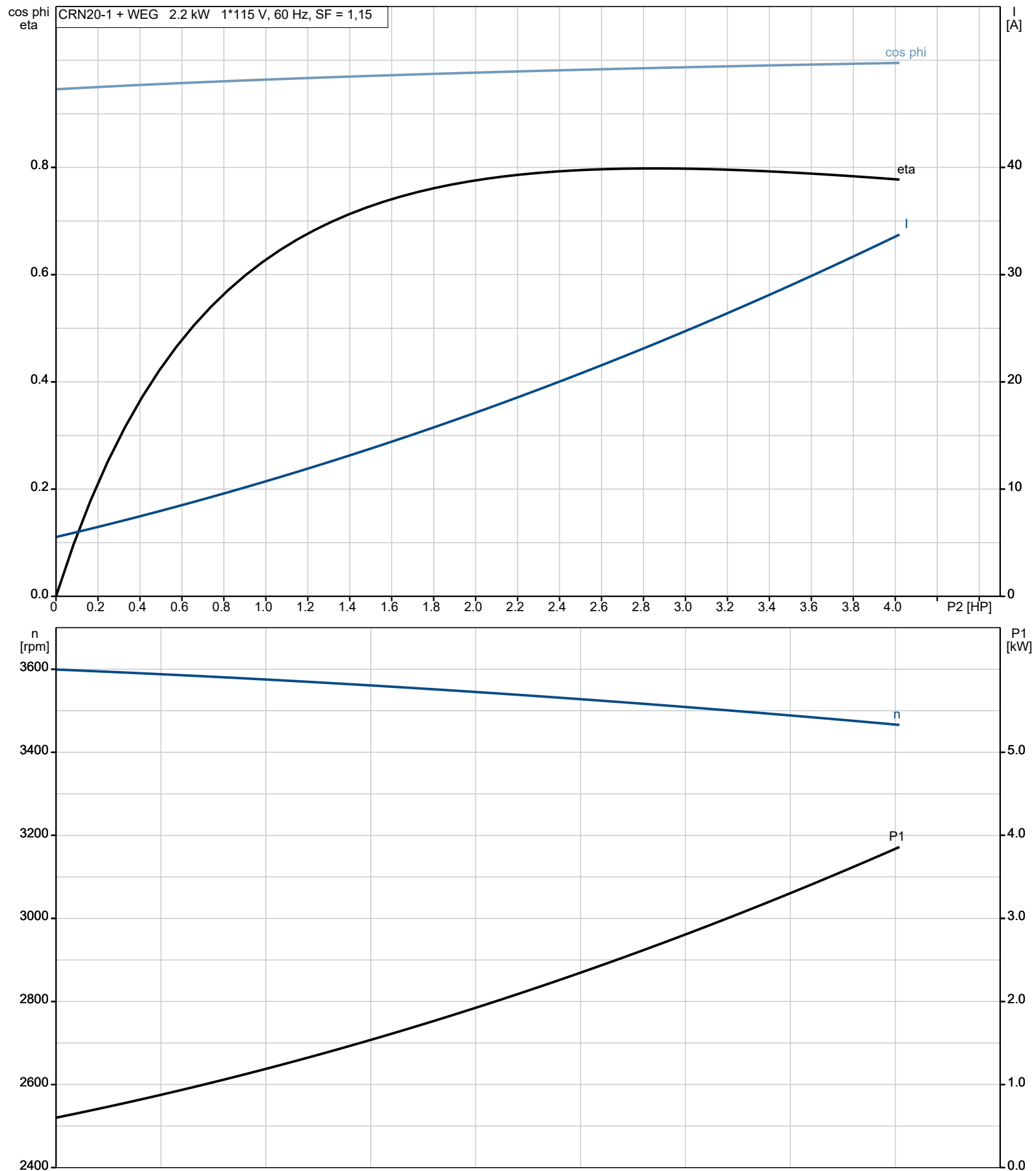


Company name: Specs
Created by:
Phone:

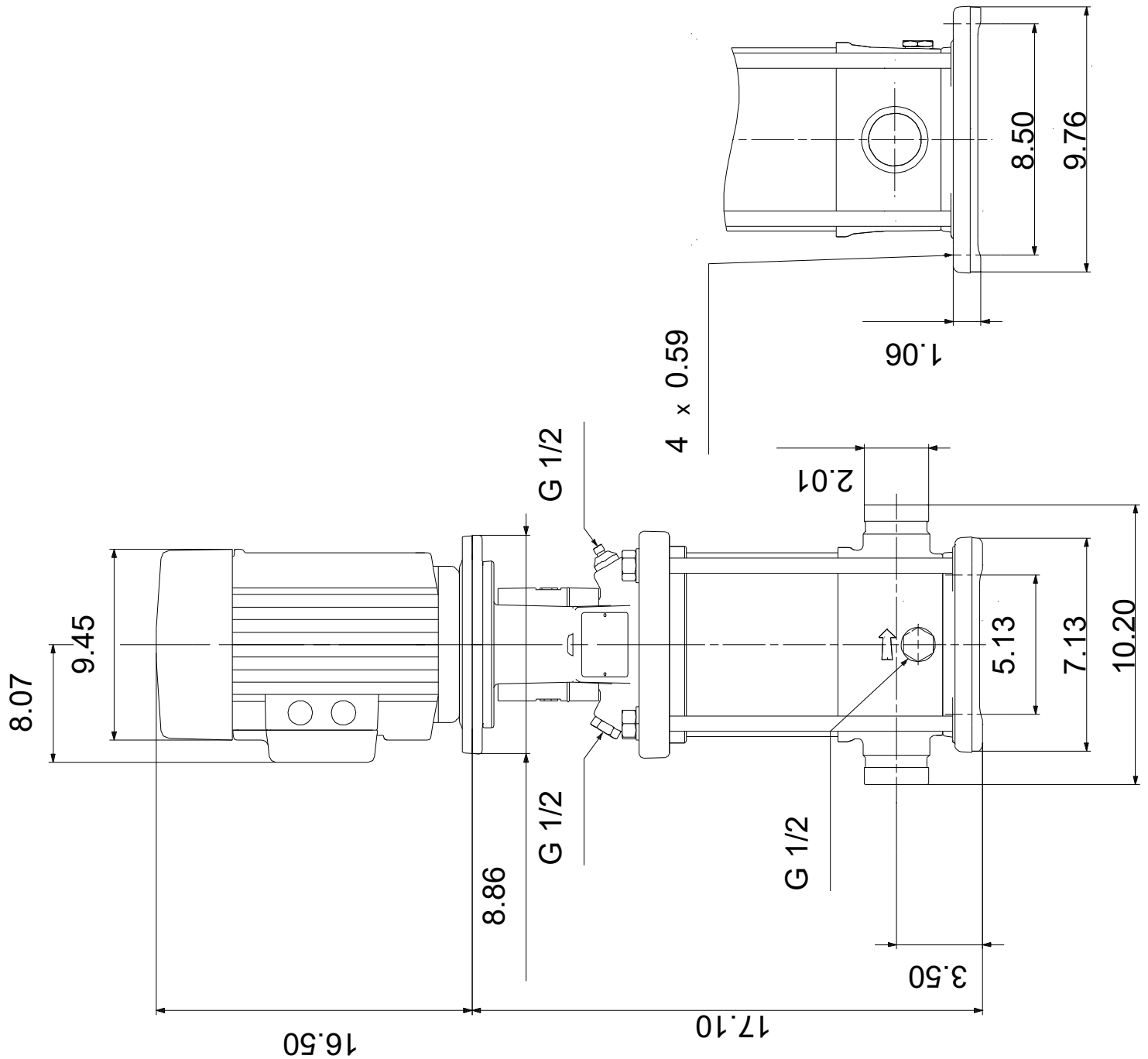
Date: 27/01/2023

Description	Value
Rated speed:	3510 rpm
Efficiency:	80.0%
Motor efficiency at full load:	80.0 %
Motor efficiency at 3/4 load:	78.0 %
Motor efficiency at 1/2 load:	73.0 %
Number of poles:	2
Enclosure class (IEC 34-5):	IP55
Insulation class (IEC 85):	F
Built-in motor protection:	PTO
Motor No:	99883322
Controls:	
Frequency converter:	NONE
Others:	
DOE Pump Energy Index CL:	0.91
Net weight:	148 lb
Gross weight:	163 lb
Shipping volume:	13.1 ft³

99917853 CRN 20-1 A-P-A-E-HQQE 60 Hz



99917853 CRN 20-1 A-P-A-E-HQQE 60 Hz

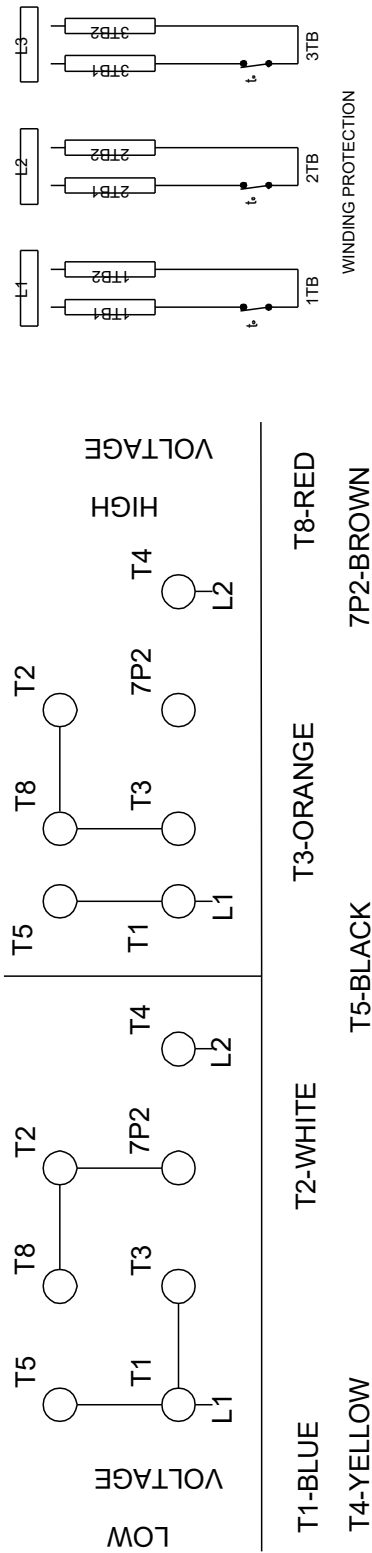




Company name: Specs
Created by:
Phone:

Date: 27/01/2023

99917853 CRN 20-1 A-P-A-E-HQQE 60 Hz



Note! All units are in [in] unless others are stated.