

Submittal Data

PROJECT:	UNIT TAG:	QUANTITY:
REPRESENTATIVE:	TYPE OF SERVICE:	DATE:
ENGINEER:	SUBMITTED BY:	DATE:
CONTRACTOR:	APPROVED BY:	DATE:
	ORDER NO.:	DATE:

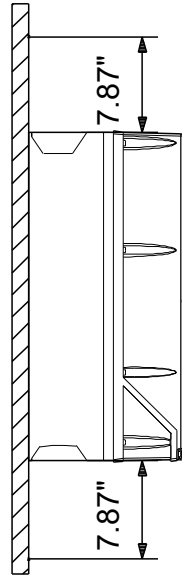
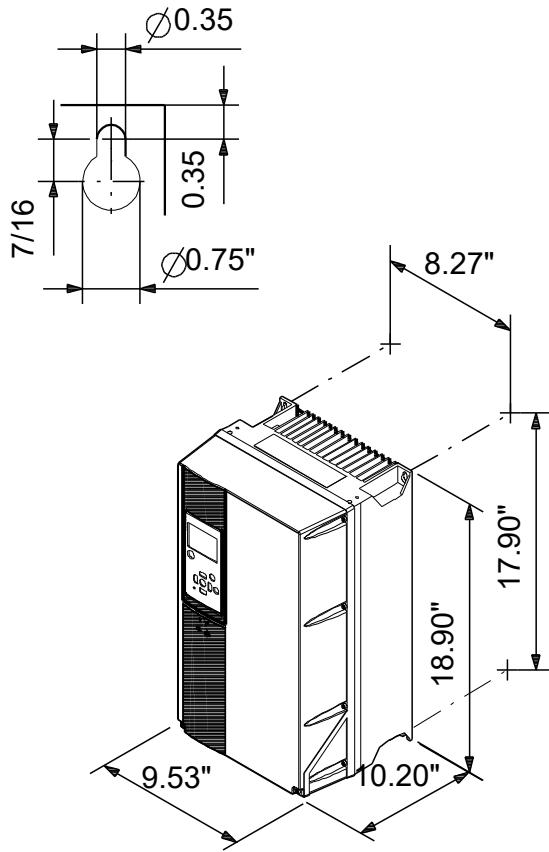


CUE 1X200-240V IP55 1,5KW DC


CUE

Note! Product picture may differ from actual product

Conditions of Service	Pump Data	Motor Data
	<div>Maximum ambient temperature:113 °F</div> <div>Approvals:CE, CULUS, C-TICK</div> <div>Product number:99616626</div>	<div>Mains frequency:50 / 60 Hz</div> <div>Enclosure class:IP55</div> <div>Motor protection:YES</div> <div>Thermal protection:external</div>



Materials:

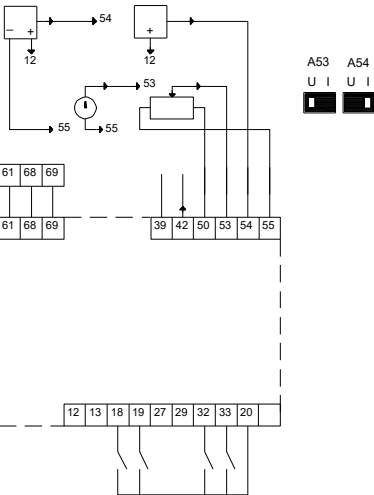
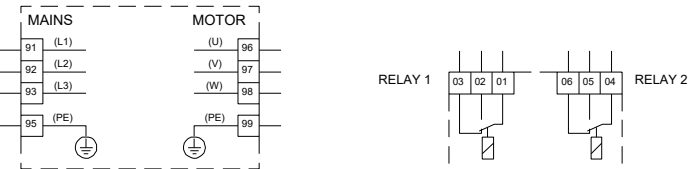
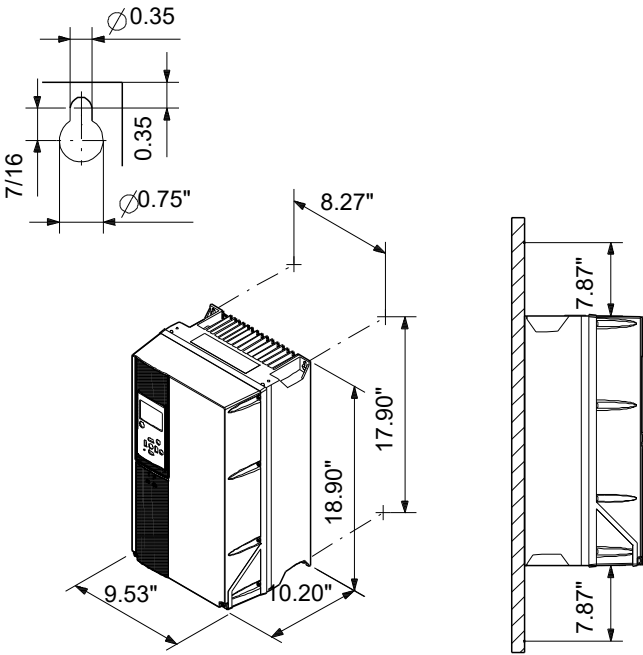
Qty.	Description
1	<p>CUE 1X200-240V IP55 1,5KW DC</p>  <p>Note! Product picture may differ from actual product</p> <p>Product No.: 99616626</p> <p>CUE is a complete range of external frequency converters designed for speed control of a wide range of Grundfos pumps. CUE has a built-in PI controller and offers the same functionality and user-interface as Grundfos E-pumps. CUE solutions can thus be seen as an extension to the E-pump range.</p> <p>By choosing a CUE-solution, you will get the following benefits:</p> <ul style="list-style-type: none"> - Grundfos E-pump functionality and user-interface - application- and pump-family-related functions - increased comfort compared to fixed-speed pumps - very easy installation and commissioning compared to standard frequency converters - speed control of pumps up to 250 kW - speed control of pumps installed in potentially explosive environments. <p>CUE offers the following inputs and output:</p> <ul style="list-style-type: none"> - RS-485 GENIbus - an analog 0-10 V input for external setpoint - an analog 0/4-20 mA input for sensor - four digital inputs for various functions, for instance external start/stop - two signal relays (C/NO/NC). <p>Accessories:</p> <p>Input/output add-on board</p> <p>Provides additional input:</p> <ul style="list-style-type: none"> - one 0/4-20 mA analog input for an additional sensor - one 0-20 mA analog output - two inputs for Pt100/Pt1000 temperature sensors, for instance for bearing monitoring. <p>Motor filters:</p> <p>For reduction of dU/dt and peak voltages to the motor windings and for reduction of the acoustic noise generated in the motor, a number of motor filters are offered:</p> <ul style="list-style-type: none"> - dU/dt filters , 11-250 kW - Sine wave filters, 0.55-250 kW. <p>Technical:</p> <p>Approvals: CE, CULUS, C-TICK</p> <p>Installation:</p> <p>Range of ambient temperature: 32 .. 113 °F</p> <p>Relative humidity: 5-95 %</p> <p>Electrical data:</p> <p>Rated power - P2: 2 HP</p> <p>Mains frequency: 50 / 60 Hz</p> <p>Rated voltage: 1 x 200-240 V</p> <p>Rated current: 7.5 A</p> <p>Maximum current consumption: 7.5 A</p> <p>Efficiency at full load: 96 %</p> <p>Enclosure class (IEC 34-5): IP55</p> <p>Others:</p> <p>Net weight: 50.7 lb</p> <p>Gross weight: 51.2 lb</p> <p>Country of origin: US</p> <p>Custom tariff no.: 8504.40.4000</p>



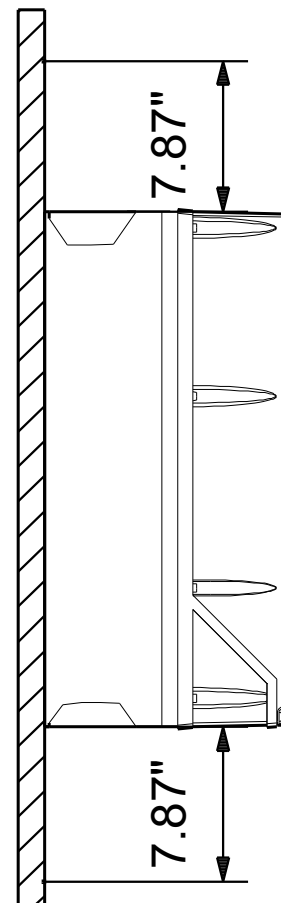
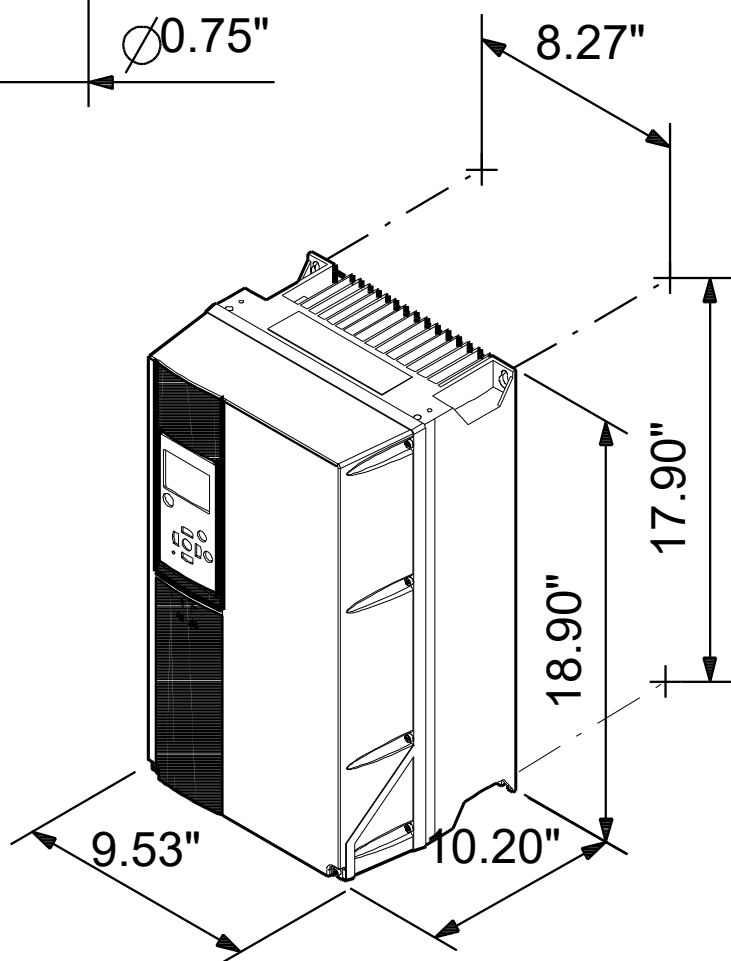
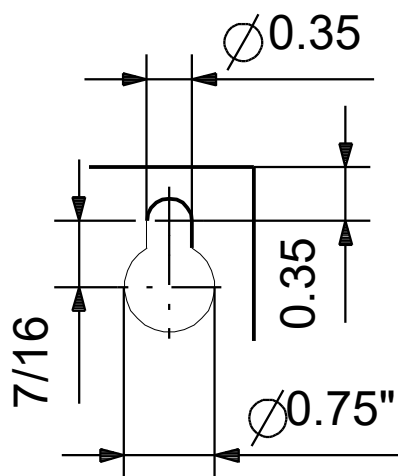
Company name:
Created by:
Phone:

Date: 01/11/2023

Description	Value
General information:	
Product name:	CUE 1X200-240V IP55 1,5KW DC
Product No:	99616626
EAN number:	5713831973317
Technical:	
Approvals:	CE, CULUS, C-TICK
Installation:	
Range of ambient temperature:	32 .. 113 °F
Relative humidity:	5-95 %
Mounted on:	Wall
Electrical data:	
Rated power - P2:	2 HP
Mains frequency:	50 / 60 Hz
Rated voltage:	1 x 200-240 V
Rated current:	7.5 A
Maximum current consumption:	7.5 A
Efficiency at full load:	96 %
Enclosure class (IEC 34-5):	IP55
Built-in motor protection:	YES
Thermal protec:	external
Cable length:	150/300 m
Others:	
Net weight:	50.7 lb
Gross weight:	51.2 lb
Sales region:	Namreg
Country of origin:	US
Custom tariff no.:	8504.40.4000



99616626 CUE 1X200-240V IP55 1,5KW DC



99616626 CUE 1X200-240V IP55 1,5KW DC

