

Submittal Data

PROJECT:	UNIT TAG:	QUANTITY:
REPRESENTATIVE:	TYPE OF SERVICE:	DATE:
ENGINEER:	SUBMITTED BY:	DATE:
CONTRACTOR:	APPROVED BY:	DATE:
	ORDER NO.:	DATE:

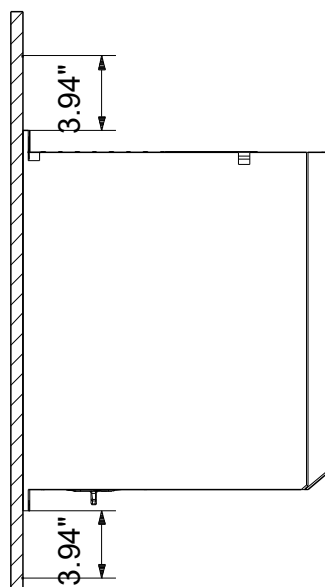
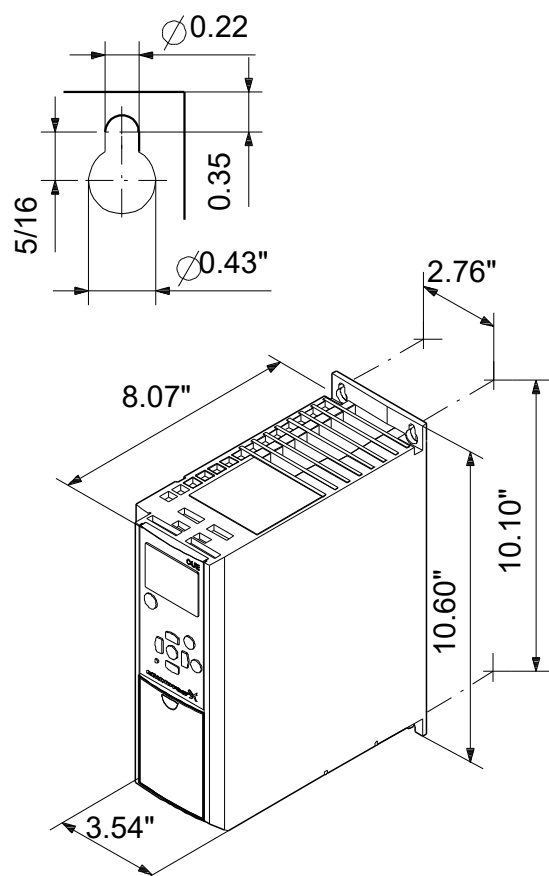


CUE 3X200-240V IP20 1,1KW


CUE

Note! Product picture may differ from actual product

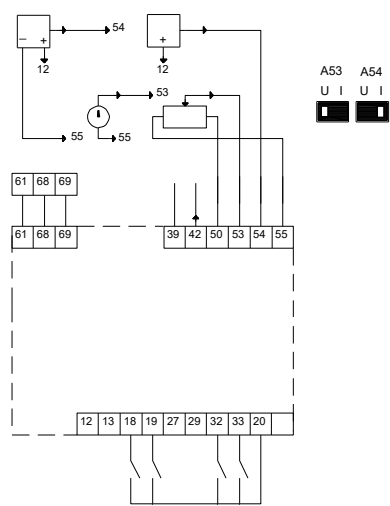
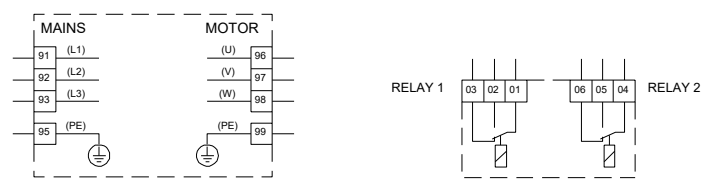
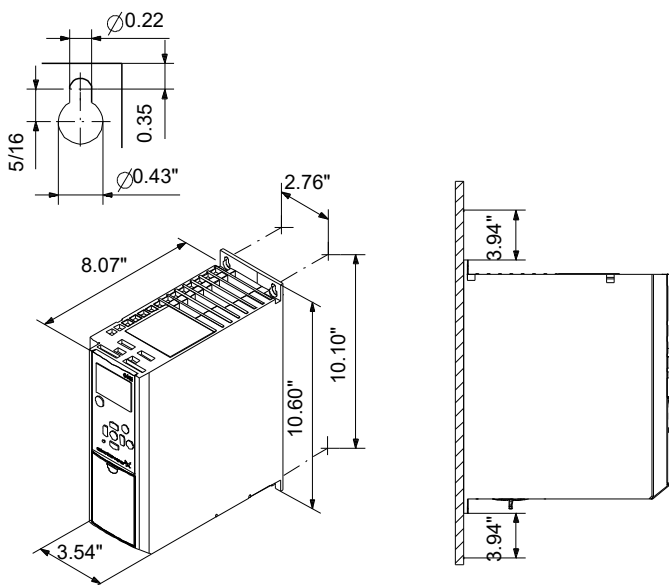
Conditions of Service	Pump Data	Motor Data
	Maximum ambient temperature: 122 °F Approvals: CE, CULUS, C-TICK Product number: 99616637	Mains frequency: 50 / 60 Hz Enclosure class: IP20 Motor protection: YES Thermal protection: external



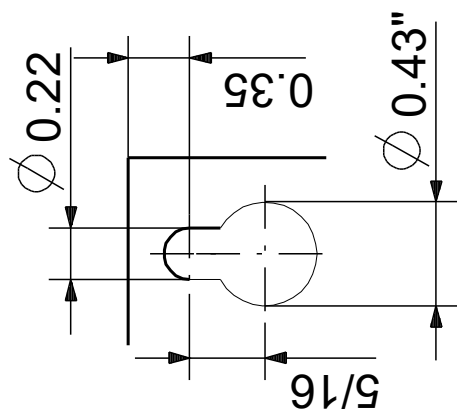
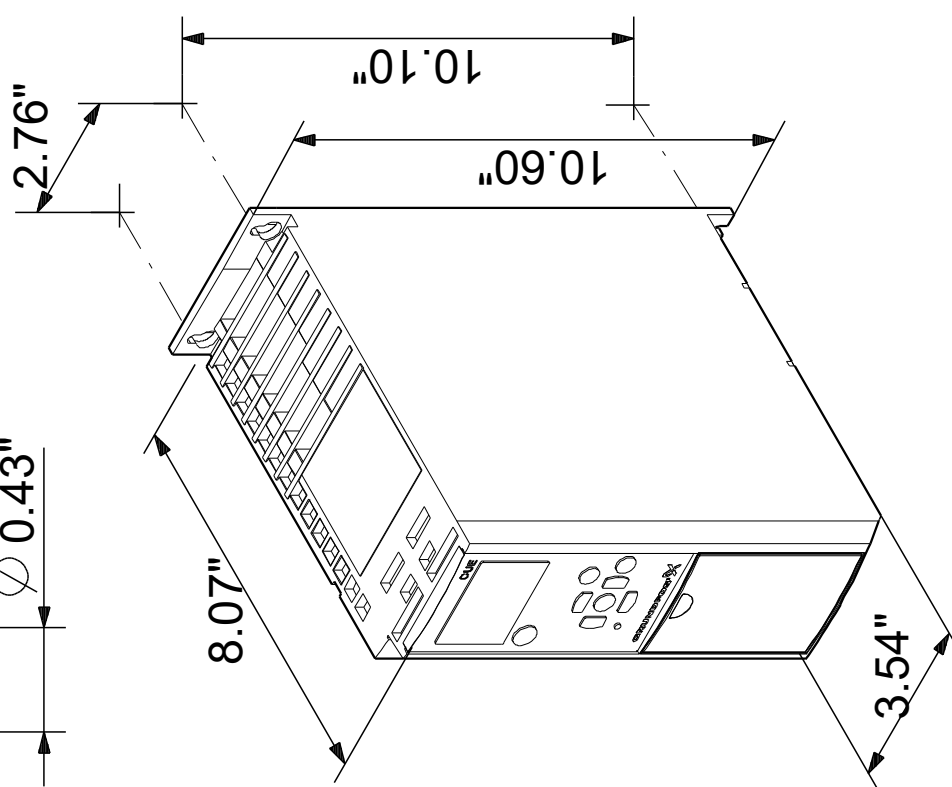
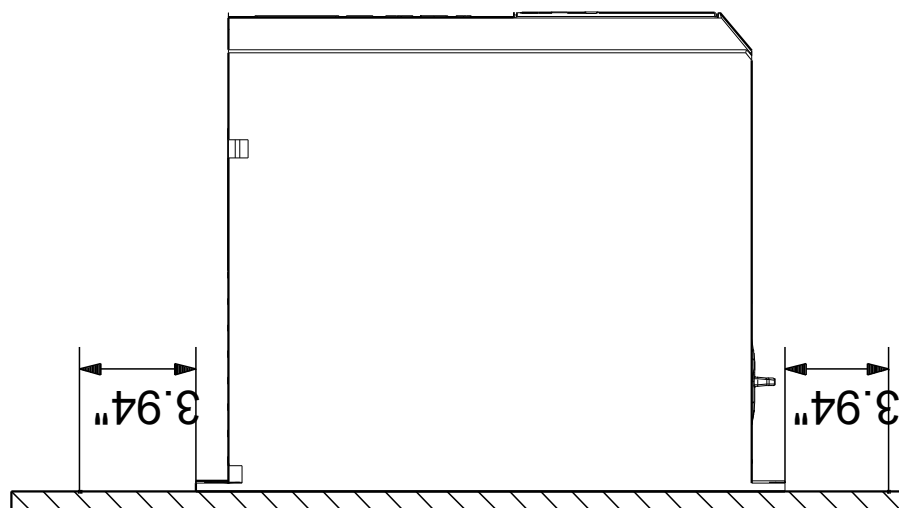
Materials:

Qty.	Description
1	<p>CUE 3X200-240V IP20 1,1KW</p>  <p>Note! Product picture may differ from actual product</p> <p>Product No.: 99616637</p> <p>CUE is a complete range of external frequency converters designed for speed control of a wide range of Grundfos pumps. CUE has a built-in PI controller and offers the same functionality and user-interface as Grundfos E-pumps. CUE solutions can thus be seen as an extension to the E-pump range.</p> <p>By choosing a CUE-solution, you will get the following benefits:</p> <ul style="list-style-type: none"> - Grundfos E-pump functionality and user-interface - application- and pump-family-related functions - increased comfort compared to fixed-speed pumps - very easy installation and commissioning compared to standard frequency converters - speed control of pumps up to 250 kW - speed control of pumps installed in potentially explosive environments. <p>CUE offers the following inputs and output:</p> <ul style="list-style-type: none"> - RS-485 GENIbus - an analog 0-10 V input for external setpoint - an analog 0/4-20 mA input for sensor - four digital inputs for various functions, for instance external start/stop - two signal relays (C/NO/NC). <p>Accessories:</p> <p>Input/output add-on board</p> <p>Provides additional input:</p> <ul style="list-style-type: none"> - one 0/4-20 mA analog input for an additional sensor - one 0-20 mA analog output - two inputs for Pt100/Pt1000 temperature sensors, for instance for bearing monitoring. <p>Motor filters:</p> <p>For reduction of dU/dt and peak voltages to the motor windings and for reduction of the acoustic noise generated in the motor, a number of motor filters are offered:</p> <ul style="list-style-type: none"> - dU/dt filters , 11-250 kW - Sine wave filters, 0.55-250 kW. <p>Technical:</p> <p>Approvals: CE, CULUS, C-TICK</p> <p>Installation:</p> <p>Range of ambient temperature: 32 .. 122 °F</p> <p>Relative humidity: 5-95 %</p> <p>Electrical data:</p> <p>Rated power - P2: 1.5 HP</p> <p>Mains frequency: 50 / 60 Hz</p> <p>Rated voltage: 3 x 200-240 V</p> <p>Rated current: 6.6 A</p> <p>Maximum current consumption: 6.6 A</p> <p>Efficiency at full load: 96 %</p> <p>Enclosure class (IEC 34-5): IP20</p> <p>Others:</p> <p>Net weight: 10.8 lb</p> <p>Gross weight: 11.2 lb</p> <p>Country of origin: US</p> <p>Custom tariff no.: 8504.40.4000</p>

Description	Value
General information:	
Product name:	CUE 3X200-240V IP20 1,1KW
Product No:	99616637
EAN number:	5713831973423
Technical:	
Approvals:	CE, CULUS, C-TICK
Installation:	
Range of ambient temperature:	32 .. 122 °F
Relative humidity:	5-95 %
Mounted on:	Wall
Electrical data:	
Rated power - P2:	1.5 HP
Mains frequency:	50 / 60 Hz
Rated voltage:	3 x 200-240 V
Rated current:	6.6 A
Maximum current consumption:	6.6 A
Efficiency at full load:	96 %
Enclosure class (IEC 34-5):	IP20
Built-in motor protection:	YES
Thermal protec:	external
Cable length:	150/300 m
Others:	
Net weight:	10.8 lb
Gross weight:	11.2 lb
Country of origin:	US
Custom tariff no.:	8504.40.4000



99616637 CUE 3X200-240V IP20 1,1KW



99616637 CUE 3X200-240V IP20 1,1KW

