

Submittal Data

| | | |
|-----------------|------------------|-----------|
| PROJECT: | UNIT TAG: | QUANTITY: |
| REPRESENTATIVE: | TYPE OF SERVICE: | DATE: |
| ENGINEER: | SUBMITTED BY: | DATE: |
| CONTRACTOR: | APPROVED BY: | DATE: |
| | ORDER NO.: | DATE: |

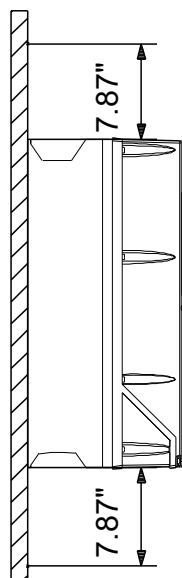
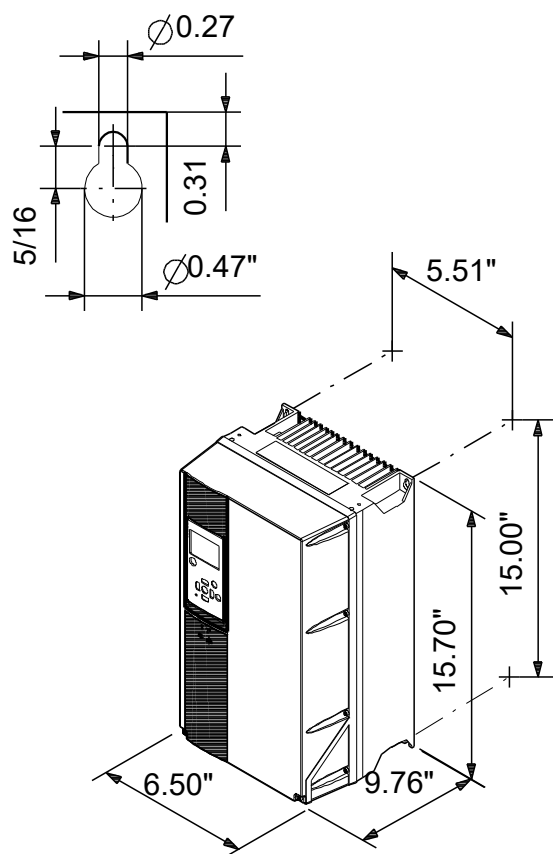


CUE 3X200-240V IP20 5,5KW


CUE

Note! Product picture may differ from actual product

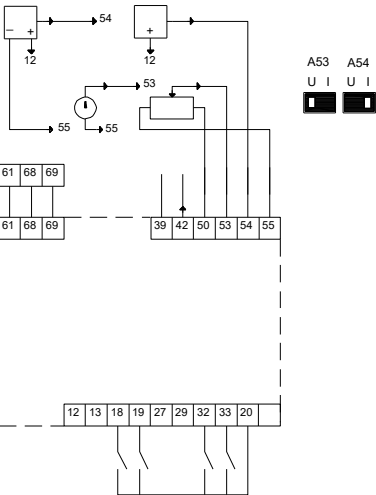
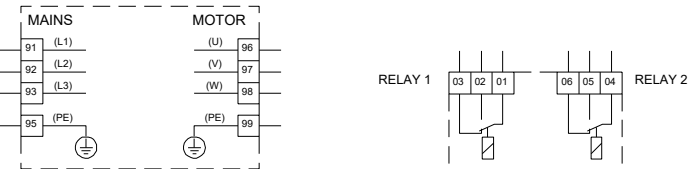
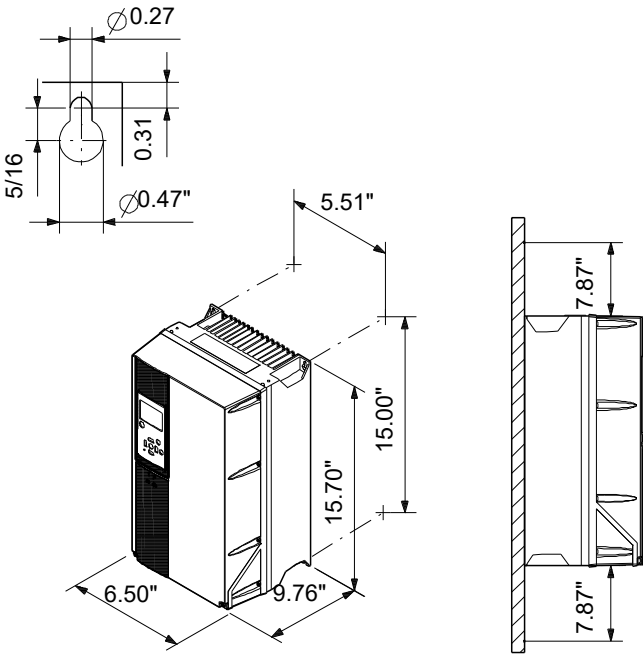
| Conditions of Service | Pump Data | Motor Data |
|-----------------------|---|--|
| | <div>Maximum ambient temperature:113 °F</div> <div>Approvals:CE, CULUS, C-TICK</div> <div>Product number:99616642</div> | <div>Mains frequency:50 / 60 Hz</div> <div>Enclosure class:IP20</div> <div>Motor protection:YES</div> <div>Thermal protection:external</div> |



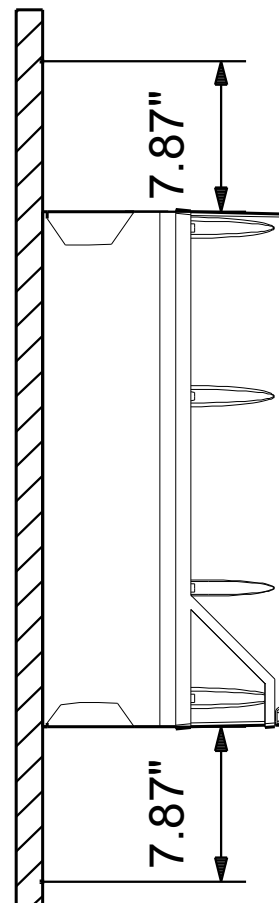
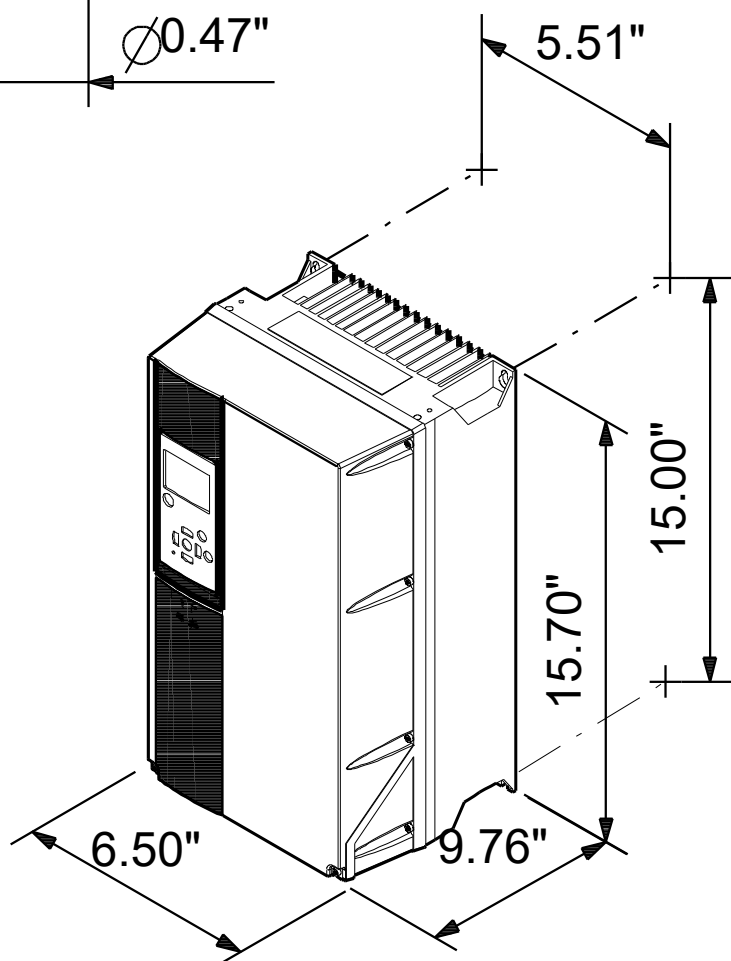
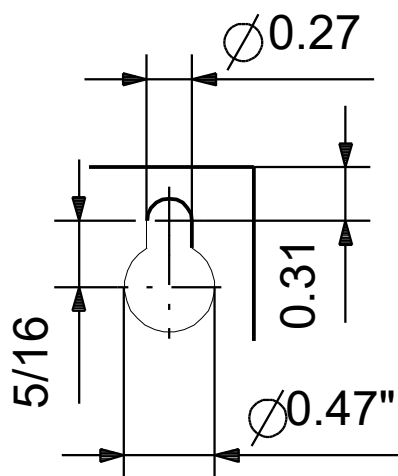
Materials:

| Qty. | Description |
|------|---|
| 1 | <p>CUE 3X200-240V IP20 5,5KW</p>  <p>Note! Product picture may differ from actual product</p> <p>Product No.: 99616642</p> <p>CUE is a complete range of external frequency converters designed for speed control of a wide range of Grundfos pumps. CUE has a built-in PI controller and offers the same functionality and user-interface as Grundfos E-pumps. CUE solutions can thus be seen as an extension to the E-pump range.</p> <p>By choosing a CUE-solution, you will get the following benefits:</p> <ul style="list-style-type: none"> - Grundfos E-pump functionality and user-interface - application- and pump-family-related functions - increased comfort compared to fixed-speed pumps - very easy installation and commissioning compared to standard frequency converters - speed control of pumps up to 250 kW - speed control of pumps installed in potentially explosive environments. <p>CUE offers the following inputs and output:</p> <ul style="list-style-type: none"> - RS-485 GENIbus - an analog 0-10 V input for external setpoint - an analog 0/4-20 mA input for sensor - four digital inputs for various functions, for instance external start/stop - two signal relays (C/NO/NC). <p>Accessories:</p> <p>Input/output add-on board</p> <p>Provides additional input:</p> <ul style="list-style-type: none"> - one 0/4-20 mA analog input for an additional sensor - one 0-20 mA analog output - two inputs for Pt100/Pt1000 temperature sensors, for instance for bearing monitoring. <p>Motor filters:</p> <p>For reduction of dU/dt and peak voltages to the motor windings and for reduction of the acoustic noise generated in the motor, a number of motor filters are offered:</p> <ul style="list-style-type: none"> - dU/dt filters , 11-250 kW - Sine wave filters, 0.55-250 kW. <p>Technical:</p> <p>Approvals: CE, CULUS, C-TICK</p> <p>Installation:</p> <p>Range of ambient temperature: 32 .. 113 °F</p> <p>Relative humidity: 5-95 %</p> <p>Electrical data:</p> <p>Rated power - P2: 7.5 HP</p> <p>Mains frequency: 50 / 60 Hz</p> <p>Rated voltage: 3 x 200-240 V</p> <p>Rated current: 24.2 A</p> <p>Maximum current consumption: 24.2 A</p> <p>Efficiency at full load: 96 %</p> <p>Enclosure class (IEC 34-5): IP20</p> <p>Others:</p> <p>Net weight: 26.5 lb</p> <p>Gross weight: 26.9 lb</p> <p>Country of origin: US</p> <p>Custom tariff no.: 8504.40.4000</p> |

| Description | Value |
|-------------------------------|---------------------------|
| General information: | |
| Product name: | CUE 3X200-240V IP20 5,5KW |
| Product No: | 99616642 |
| EAN number: | 5713831973478 |
| Technical: | |
| Approvals: | CE, CULUS, C-TICK |
| Installation: | |
| Range of ambient temperature: | 32 .. 113 °F |
| Relative humidity: | 5-95 % |
| Mounted on: | Wall |
| Electrical data: | |
| Rated power - P2: | 7.5 HP |
| Mains frequency: | 50 / 60 Hz |
| Rated voltage: | 3 x 200-240 V |
| Rated current: | 24.2 A |
| Maximum current consumption: | 24.2 A |
| Efficiency at full load: | 96 % |
| Enclosure class (IEC 34-5): | IP20 |
| Built-in motor protection: | YES |
| Thermal protec: | external |
| Cable length: | 150/300 m |
| Others: | |
| Net weight: | 26.5 lb |
| Gross weight: | 26.9 lb |
| Country of origin: | US |
| Custom tariff no.: | 8504.40.4000 |



99616642 CUE 3X200-240V IP20 5,5KW



99616642 CUE 3X200-240V IP20 5,5KW

