



GE INDUSTRIAL MOTORS
a **WOLONG** company

Wednesday, October 04, 2023

Technical Data Center
3050 post Oak Blvd.,
Suite 630, Houston,
TX 77056
Phone: +1 877-450-6026

Customer: **PFC EQUIPMENT**
9366 DEERWOOD LANE 55369
MAPLE GROVE,MN 55369

DataPack Document, Version: v23095156.01

Inside Sales Representative: Technical Data Center
Inside Sales Rep Phone:
Model Number: 5KS215XAA1166
Sales Order No: 2000011171
Order Line No: 1
Instruction Manual: GEI-56128
Connection Diagram: GEM2034E-FIG1

Alternate Phone: 260-439-2000
Customer Order: No: 654073
Customer Item No:
Customer Part No: NOCAT210MH
Outline Drawing: 4002B5821PDP5892

Accessory Connection Diagrams

Bearing Thermocouple: None
RTD: None
Thermostat: 3027JE-2A
Bearing RTD: None

Heater: None
Thermistor: None
Winding Thermocouple: None

Revision History

<u>Version</u>	<u>Date</u>	<u>Comments</u>
v23095156.01	10-04-2023	Original Version

Distribution Information

<u>Quantity</u>	<u>Recipient</u>
1	britny.schaefer@wolongamerica.com BRITNY.SCHAEFER@WOLONGAMERICA.C OM E-Mail Distribution

<u>Quantity</u>	<u>Recipient</u>
1	geim.engapps@geim.wolong.com GEIM.ENGAPPS@GEIM.WOLONG.COM E-Mail Distribution



GE INDUSTRIAL MOTORS
a **WOLONG** company

Wednesday, October 04, 2023

Technical Data Center
3050 post Oak Blvd.,
Suite 630, Houston,
TX 77056
Phone: +1 877-450-6026

Customer: PFC EQUIPMENT
9366 DEERWOOD LANE 55369
MAPLE GROVE, MN 55369

DataPack Document, Version: v23095156.01

Customer Order / Item:	654073	Sales Order No:	2000011171
Customer Part:	NOCAT210MH	Order Line No:	1
MODEL NUMBER: 5KS215XAA1166		Estimated Weight:	220 Lbs
Outline Drawing:	4002B5821PDP5892	Enclosure:	TEFC
Connection Diagram:	GEM2034E-FIG1	Encl Construction:	841
Instruction Book:	GEI-56128	Ambient Max(°C):	40
Design Code:	21BD0121A	Insulation Class:	H
Type:	KS	NEMA Design:	B
Frame:	215JM	Nominal Efficiency:	90.2%
Phases:	3	Guaranteed Efficiency:	89.5%
Poles:	2	KVA Code:	H
Output Power:	10HP 7.5KW	Max KVAR:	2.2
RPM:	3520	Power Factor:	90.0
Voltage:	460	Bearing - DE:	6309ZC3
Hertz:	60	Bearing - ODE:	6208ZC3
Amps - FL:	11.5	Vibration:	0.04 IN/SEC
Service Factor:	1.15	Bearing Lubrication:	MOBIL POLYREX EM
Time Rating:	CONT	Protection(IP):	56

Enclosure is Totally Enclosed Fan-Cooled

Stamped Nameplate Notes:

IEEE STD 841-2021
THERMOSTAT LEADS TB1-TB2: TRIP
STAMP NP249A5564P051 AS BELOW:
MODEL:5KS215XAA1166 S/N: XXX
CSA CERTIFIED CSA09.2216219 FOR EX NA IIC 200C GC
CL 1 ZONE2 AEX NA IIC 200C;CL 1 DIV2 GRP ABCD 200C
IN -25C <= AMB <= 40C, 1.0 SF ON SINE-WAVE PWR
SURF TEMP 200C AT 1.15SF ON SINE-WAVE PWR
OR 200C VT OR 215C CT OR 200C CHP PWM CONTROL
ALTERNATE RATING FOR PWM CONTROL 1.0SF 40C AMB
VT 0 - 60 HZ, CT 8.6-60 HZ, CHP 60-90 HZ.

Additional Information:

2P - JM EXTN
C/BOX 55 CU IN-1.00 NPT
F1 CONDUIT BOX MOUNTING



GE INDUSTRIAL MOTORS
a **WOLONG** company

Wednesday, October 04, 2023

Technical Data Center
3050 post Oak Blvd.,
Suite 630, Houston,
TX 77056
Phone: +1 877-450-6026

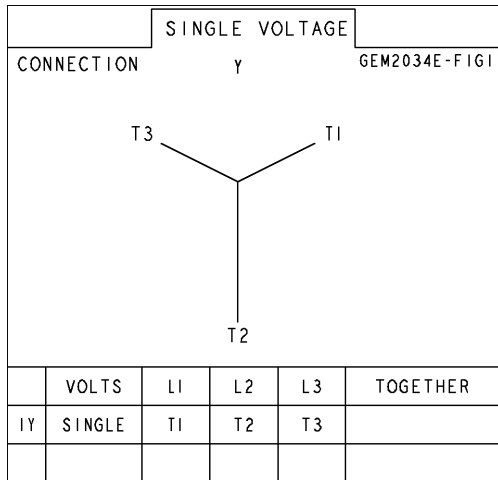
Customer: PFC EQUIPMENT
9366 DEERWOOD LANE 55369
MAPLE GROVE, MN 55369

DataPack Document, Version: v23095156.01

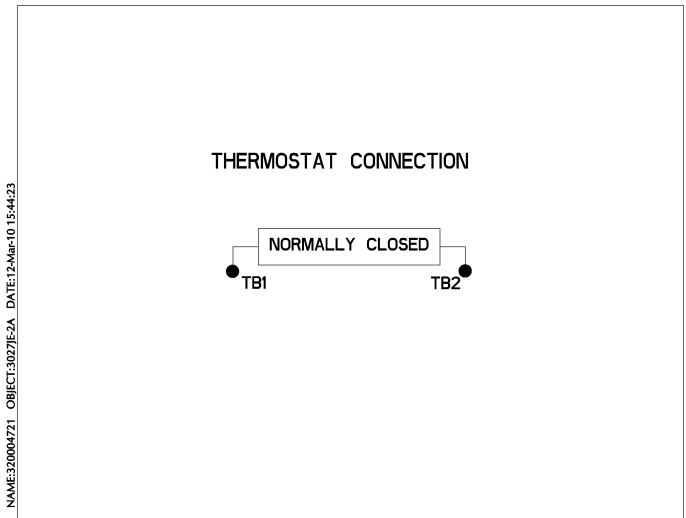
(3)CLASS F THERMOSTAT LEADS EXIT WITH MOTOR LEADS
"C" FACE AT DE ENDSHIELD AK=8 1/2" ROUND FRAME
SHAFT SEAL BOTH ENDS
BURNDY SERVIT POST ON FRAME

Diagrams for Model: 5KS215XAA1166

Connection Diagram
GEM2034E-FIG1



Thermostat Connection
3027JE-2A



Performance Characteristics

1st Winding 1st Connection

Design: 21BD0121A

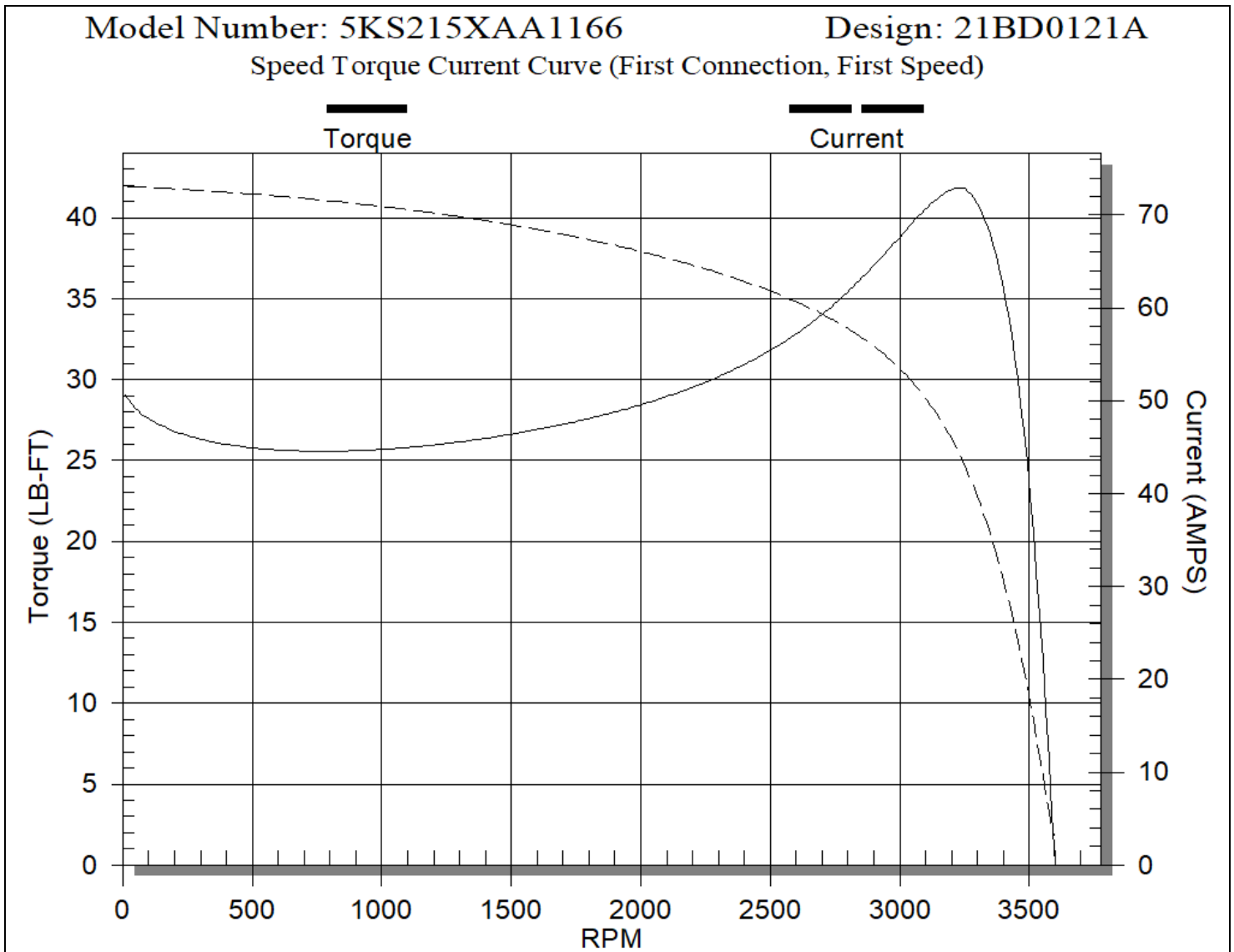
LOAD %	125.0	115.0	100.0	75.0	50.0	25.0	0.0
% EFF	88.60	89.26	90.20	91.03	90.91	87.39	0.00
% PF	89.96	90.02	90.00	87.90	82.21	64.19	9.16
AMPS	14.68	13.40	11.50	8.77	6.26	4.17	3.04

TORQ(FL)#FT 14.92 TORQ(LR)%FL 201.08 TORQ(BD)%FL 278.45
 AMPS(LR) 73.10 PF AT START 0.36

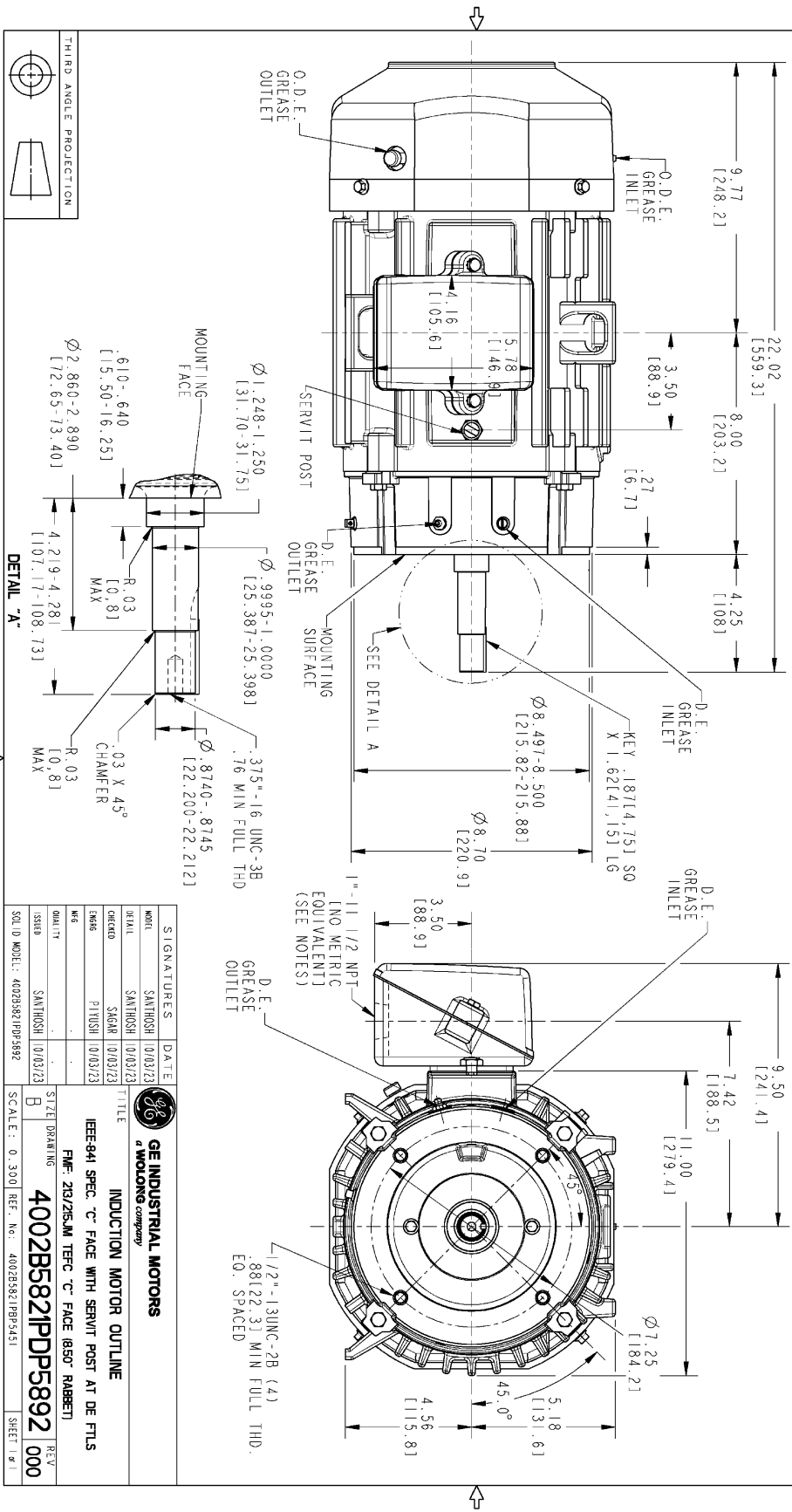
This motor is capable of two cold or one hot start with a maximum connected load inertia of 75.0 Lb-Ft Sq (3.2 Kg-meter Sq) at 100% voltage, where the load torque varies with the square of the speed. Acceleration time with maximum inertia and the above load type is 35 seconds. Safe stall time at 100% voltage is 67 seconds cold, 42 seconds hot. Rotor inertia is 0.39 Lb-Ft Sq (0.016 Kg-meter Sq).

Open Circuit A-C: 0.466
 Short Circuit A-C: 0.017
 Stator Slots: 36

Short Circuit D-C: 0.010
 X/R Ratio: 3.897
 Rotor Slots: 26



NOTE 1: CONDUIT BOX MAY BE ASSEMBLED WITH ENTRANCE UP OR DOWN.
 NOTE 2: F1 ASSEMBLY AS SHOWN.
 NOTE 3: MOUNTING SURFACES WILL BE SQUARE AND CONCENTRIC WITH SHAFT WITHIN .004 T.I.R.
 NOTE 4: SHAFT RUNOUT NOT TO EXCEED .001 T.I.R.
 NOTE 5: D.E. ENDSHIELD ROTATED 90° COUNTER CLOCKWISE.



PROPERTY INFORMATION
 All rights reserved. This document and the information it contains is the property of GE. No part of this document may be reproduced, stored in a retrieval system, or transmitted in any form or by any means, electronic, mechanical, photocopying, recording, or by any information storage and retrieval system, without the prior written permission of GE. The information contained herein is strictly prohibited except as expressly authorized in writing by GE Industrial Motors LLC.

REV.	DESCRIPTION	DATE	APPROVED

REV	DESCRIPTION	DATE	APPROVED
000			

SIGNATURES	DATE
SAITHOSH	10/03/23
SAITHOSH	10/03/23
SAITHOSH	10/03/23

GE INDUSTRIAL MOTORS
 A MORGAN COMPANY

INDUCTION MOTOR OUTLINE

IEEE-941 SPEC. "C" FACE WITH SERVIT POST AT DE FTLS
 PWF: 20/25/5M TFC "C" FACE (850) RABBIT

4002B5821PP5892 000

SCALE: 0.300 REF. No.: 4002B5821PP5451